

Point Cartwright and La Balsa Park

Changes to animal access

Under the new local law amendments, there are changes to how you move about this popular area with your animals.

The amendment is in response to community feedback and allows Council time to undertake a broader Sunshine Coast wide Dog Exercise Areas Plan.



Dogs are permitted on-leash, at all times at the following locations:

- Half Moon Bay
- Open-spaced areas of Point Cartwright Reserve
- Buddina Beach
- La Balsa Park.



Dogs are permitted off-leash, between 4pm to 8am, Monday to Friday inclusive at:

- Northern Beach, commonly known as 'Carties Beach' between Beach Access 196 to 196T (new temporary access until 30 June 2025)
- Dogs are prohibited in this area on weekends.



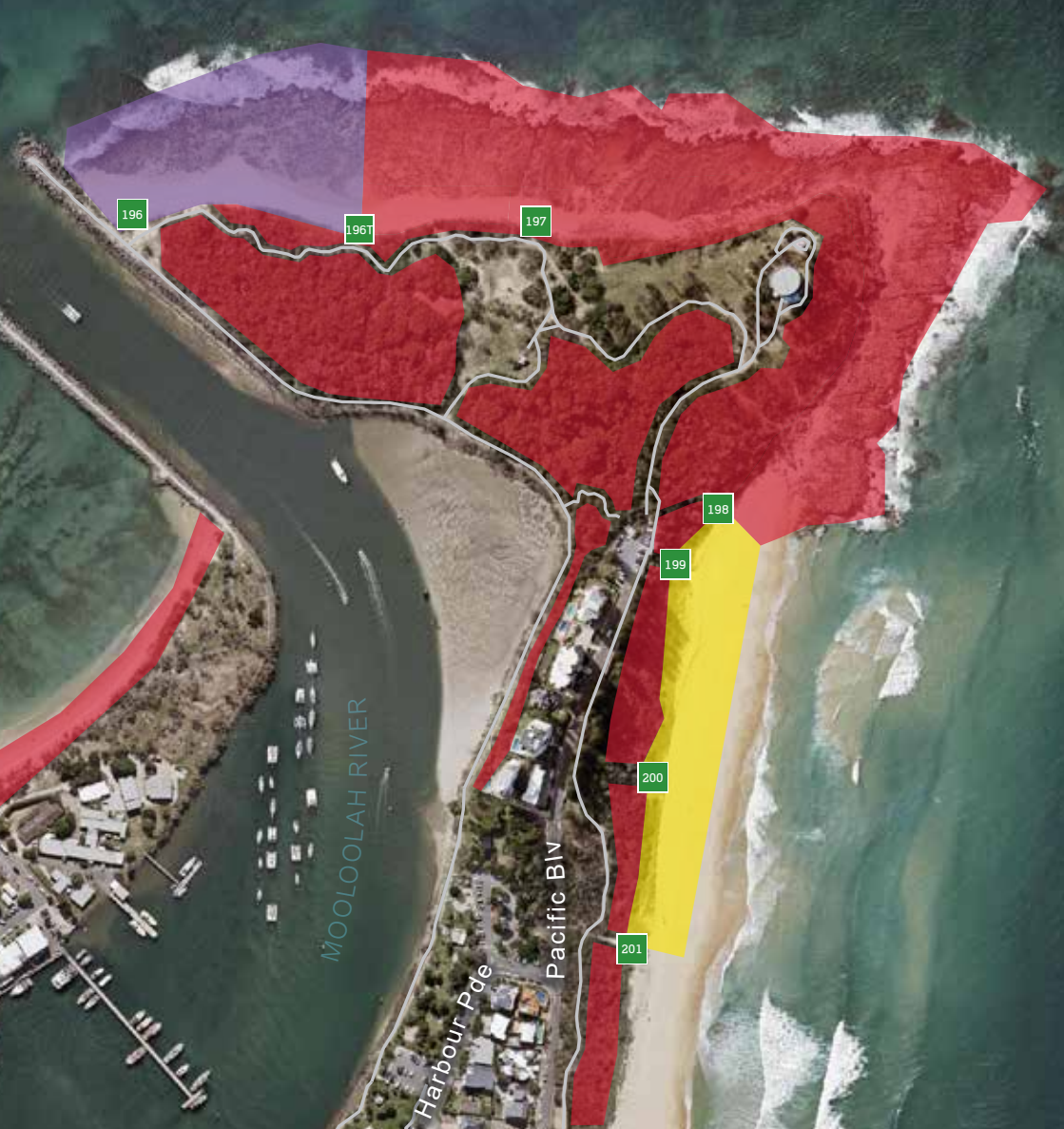
Dogs are prohibited from the following locations:

- From BA 196T towards the rocky foreshore
- the dunes along Buddina Beach
- sections of Point Cartwright Reserve
- 'Carties Beach' on weekends.

These changes strike a balance between community expectations, environmental preservation and long-term sustainability.

See the map on the following page or scan the QR code to learn more about the changes.





Dogs prohibited at all times



Dogs off-leash
Mon-Fri 4pm-8am only
Sat-Sun Dogs prohibited



Dogs off-leash at all times



In all other areas, where permitted, dogs must be on a lead at all times unless otherwise indicated



Beach access

Current as at December 2023.