

Mooloolaba Transport Corridor Upgrade Project

Stages 2 & 3 – Brisbane Road, Mooloolaba

Stage 2 & 3 Construction overview

Construction starts Wednesday 19 May 2021

(weather and site conditions permitting)

Upgrading Brisbane Road

With the major construction works of Stage 1 (Walan Street upgrade) now complete, works will soon start on Stages 2 and 3.

As per our recent Community Update (January 2021) Stages 2 and 3 will be built simultaneously between May 2021 and late 2022.

Following a public tender process, local construction company Hall Contracting has been awarded the construction contract for these two stages.

To minimise inconvenience to the community traffic flow will be maintained along Brisbane Road with partial lane closures and detours in place as required.

Access to residences and businesses will remain available and traffic controllers will assist motorists as required.

The project team will continue to liaise directly with adjacent residents and businesses prior to and during construction.

Updates will also be available on Council's website, www.sunshinecoast.qld.gov.au/mtcu

Construction stages

Stage 2. Brisbane Road from 42 Brisbane Road through to Kyamba Court including the new Mayes Canal Bridge.

- upgrading Brisbane Road to four traffic lanes
- upgrading the intersection of Brisbane Road/ Foote Street/ Tarcoola Avenue to a new, signalised intersection

- construction of the new Mayes Canal Bridge with four traffic lanes with shared pedestrian and cycle paths on both sides
- retaining the existing bus stops on Brisbane Road
- undergrounding power from Walan Street to Kapala Street and provision for future underground power to Kyamba Court.

These works are benefitting from a \$12 million investment from the Australian Government through the \$4 billion Urban Congestion Fund.

Stage 3. Intersection upgrade of Brisbane Road/Walan Street/Hancock Street

- upgrading the intersection of Brisbane Road/ Walan Street/ Hancock Street to four lanes and provision for cyclists
- provision for future underground power

Construction program

Works zones

The construction program has been designed to minimise impacts to residents, businesses and visitors and to keep traffic flowing along Brisbane Road.

Construction will take place in a series of zones, with works taking place in multiple zones at the same time. Works will take place on one side of Brisbane Road with traffic flowing on the other, before 'flipping' to the other side.

The construction timing and boundaries of each zone are indicative only and subject to change dependent upon weather, site conditions and equipment and materials availability.

The project team will provide more details on the works and timing for each zone as the project progresses.

Please see Figure 1 (refer page 3) for a map of the construction zones.

Service relocations – across all works zones

Major service relocations and upgrades including power, telecommunications, water and stormwater will take place at various locations, and at various times throughout the entire construction program.

These service works are independent of the construction zones and timelines and will be undertaken by service providers including Energex, NBN, Telstra and Unitywater in cooperation with Hall Contracting.

Service providers will liaise directly with residents and businesses as required.

Looking ahead

Construction Zones A, B and C May - September 2021

In May 2021 a construction site office will be set up on the corner of Brisbane Road and Walan Street.

During the first three-four months of the project, construction activity will focus heavily on preparation for the construction of the new Mayes Canal Bridge and underground service relocations.

To minimise impacts to motorists, the new Mayes Canal Bridge will see two lanes built at a time. Two new lanes will be constructed alongside the existing bridge with traffic continuing to flow on the old bridge. Traffic will then be 'switched' onto the new lanes while the old bridge is demolished, and the remaining two new lanes constructed.

The footprint of the new bridge will extend to the east and west of the old bridge.

May – September works include:

- installation of an underground Energex power conduit across Mayes Canal (Zone A)
- demolition of the existing Mayes Canal Bridge pedestrian bridge. (Zone B)
Pedestrians and cyclists will be diverted to the new pedestrian and cycle bridge
- earthworks and stormwater upgrades (Zone C).

Further information about the works in each zone will be provided to directly adjacent residents and businesses. Construction notifications will also be available on the project website.

Environmental considerations

Being mindful of Mayes Canal's location and environmental sensitivities including parkland and marine areas, all construction will be performed under the relevant environmental conditions and an Environmental Management Plan.

To accommodate the project, some existing trees and plants will be removed. Trees will be planted along Brisbane Road between Walan Street and Kyamba Court to offset any removed vegetation.

The completed project will include 232 new trees and 8850 plants to be planted as part of landscaping in the project area.

Work hours

Daytime construction hours will primarily be between 7am and 6pm, Monday to Saturday. Due to the significant levels of traffic on Brisbane Road nightworks will be required regularly during the construction period.

The project team will advise local residents and businesses in advance of night works.

Temporary and permanent changes to traffic conditions

For community and construction workers' safety, partial road closures will be in place along Brisbane Road and surrounding streets as required. Detours will be necessary on some occasions.

When driveway crossover works are required, some areas of the footpath and driveways to private properties will be temporarily inaccessible. The construction contractor will liaise directly with residents and businesses about access.

The width of Brisbane Road is not sufficient to accommodate four traffic lanes, a bikeway, a public transport corridor and the current number of on-street car parks. Limited on-street parking will be available along Brisbane Road post-construction.

Bus stops and bus services will be retained in conjunction with TransLink. At times it may be necessary to temporarily relocate bus stops to nearby locations. Signage will redirect passengers to these stops.

Public on-street parking remains available on nearby streets. Over 700 parking spaces are available at the new ParknGo Mooloolaba Central car park.

For more details visit www.parkngo.com.au.

Project information

To receive regular construction updates, please register by emailing your contact details to mtcu@sunshinecoast.qld.gov.au

If you would like to speak with a member of the project team about these works, please contact the team on 1800 531 597 (during office hours, Monday to Friday 8.30am – 5.30pm) or email mtcu@sunshinecoast.qld.gov.au

FIGURE 1 CONSTRUCTION ZONES FOR STAGES 2 & 3 MOOLOOLABA TRANSPORT CORRIDOR UPGRADE AS AT MAY 2021.

ZONES ARE INDICATIVE ONLY AND SUBJECT TO CHANGE

Major service relocations and upgrades including power, telecommunications, water and stormwater will take place at various locations, across all zones, and at various times throughout the entire construction program. These service works are independent of the construction zones and timelines and will be undertaken by service providers including Energex, NBN, Telstra and Unitywater in cooperation with Hall Contracting.

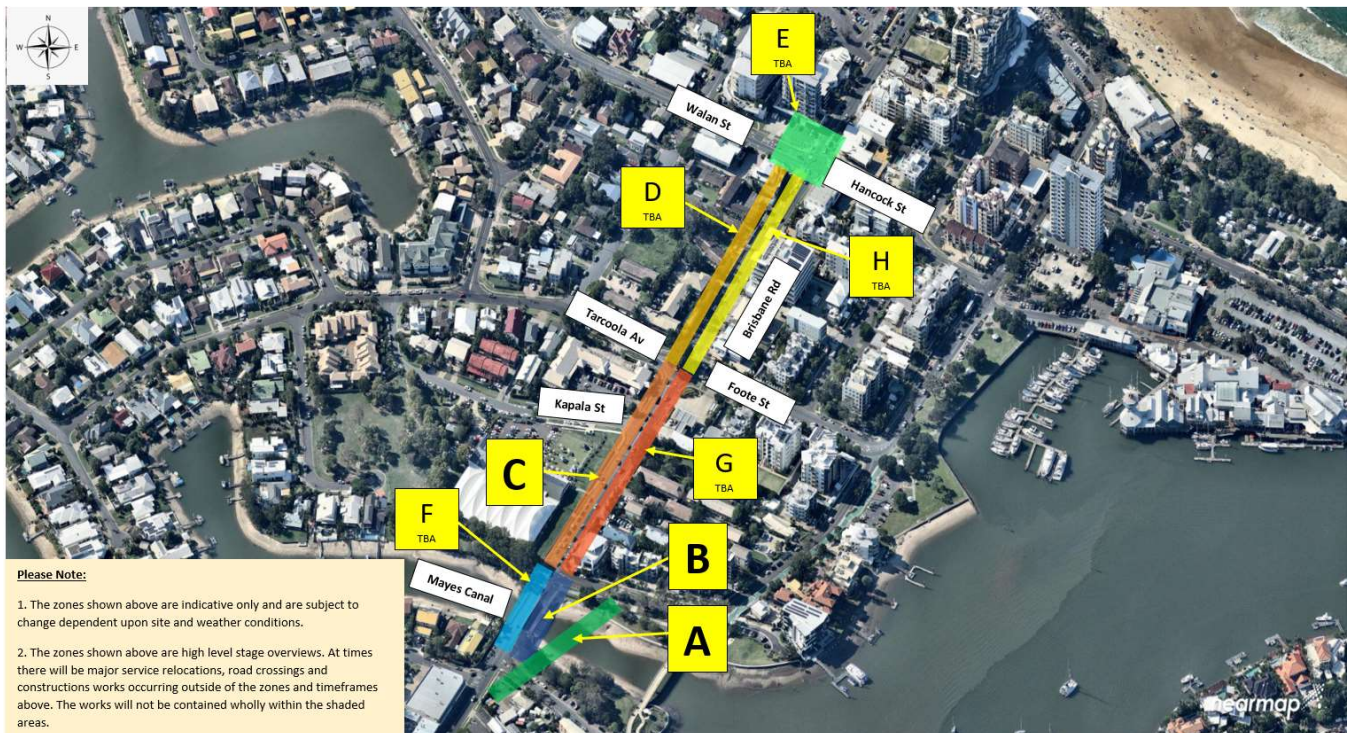


Figure 1. Construction Zones A, B and C. Works from May to September 2021