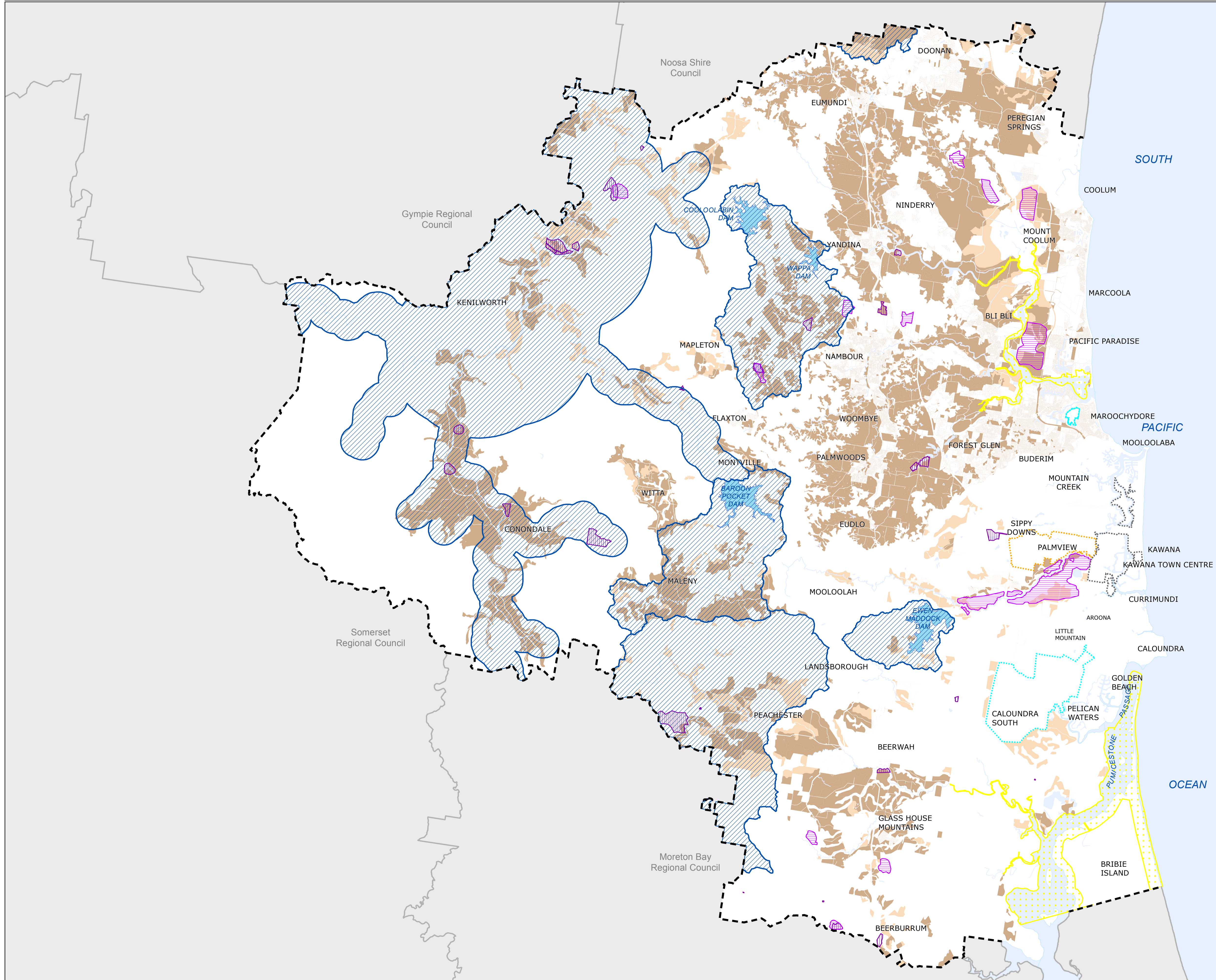


### Strategic Framework Map 7 Natural Resource Elements

- Natural Resource Elements**
- State Key Resource Area (Note 1)
  - Local Resource Area (Note 1)
  - Water Resource Catchment Area
  - Water Supply Dam
  - Declared Fish Habitat Area
  - Agricultural Land Classification (ALC) : Class A
  - Agricultural Land Classification (ALC) : Class B
- Other Elements**
- Local Government Area Boundary
  - Declared Master Planned Area (see Part 10 - Other Plans)
  - Land within Development Control Plan 1 - Kawana Waters which is the subject of the Kawana Waters Development Agreement (see Section 1.2 - Planning Scheme Components)
  - Priority Development Area (subject to the Economic Development Act 2012) (Note 2)
  - Ocean, Waterways and Waterbodies



Note 1: Includes resource processing area only.

Note 2: The Caloundra South Priority Development Area (PDA) is subject to the Economic Development Act 2012. The Natural resource elements for the Caloundra South PDA have not been identified on this map.

This Strategic Framework map graphically represents elements of the Natural Resource theme at a conceptual level and is not intended to be interrogated at the cadastre level.

**Disclaimer**  
While every care is taken to ensure the accuracy of this product, neither the Sunshine Coast Regional Council nor the State of Queensland makes any representations or warranties about its accuracy, reliability, completeness or suitability for any particular purpose and disclaims all responsibility and all liability (including without limitation, liability in negligence) for all expenses, losses, damages (including indirect or consequential damage) and costs that may occur as a result of the product being inaccurate or incomplete in any way or for any reason.

© Crown and Council Copyright Reserved 2018

Geocentric Datum of Australia 1994 (GDA94)

Approx Scale @ A1 1:119,999