

- Legend**
- Statistical Local Areas (SLA's)
 - Priority Infrastructure Area (PIA)
 - Property Parcels (DCDB)
 - Detached Residential
 - Attached Residential
 - Industry
 - Business
 - Community Use
 - Retail
 - Shoroom

Caloundra City PIA Boundaries by Statistical Local Area (SLA)

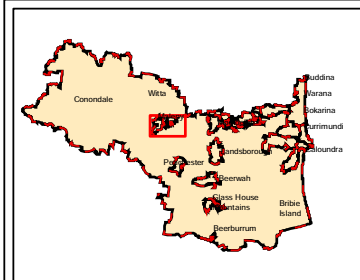
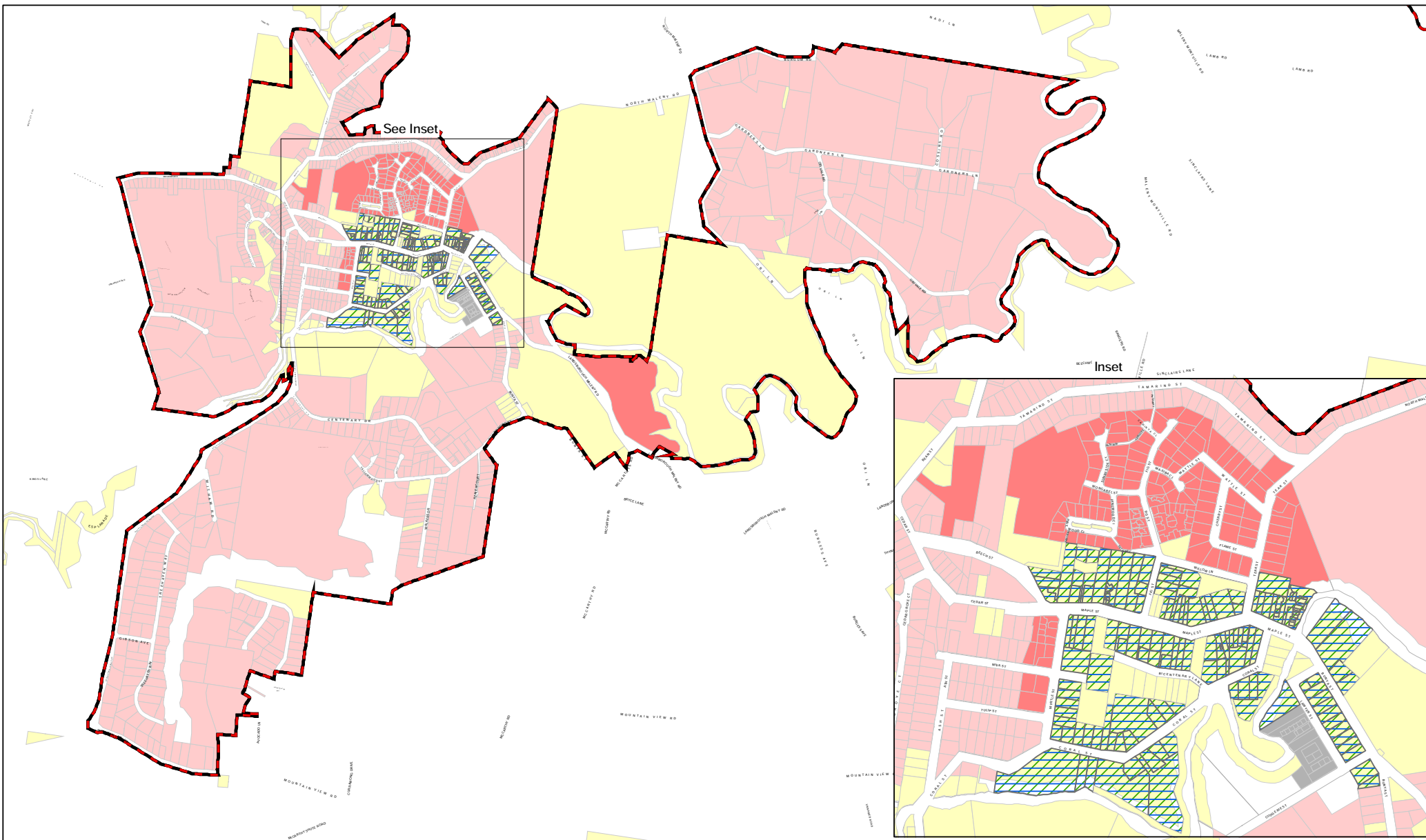
Sunshine Coast Council

© Sunshine Coast Council 2010
 While every care is taken to ensure the accuracy of this data, Sunshine Coast Council makes no representations or warranties about its accuracy, reliability, completeness or suitability for any particular purpose and disclaims all responsibility and all liability (including indirect or consequential damages) and costs which may be incurred as a result of the data being inaccurate or incomplete in any way and for any reason.



MAP PIA I
 16 September 2013

This map must not be reproduced in any form whole or part without the express written consent of Sunshine Coast Council. Digital Cadastre Database (DCDB) © The State of Queensland (Department of the Environment & Resource Management) [2010]



Legend

| | | | |
|------------------------------------|----------------------|----------|---------------|
| Priority Infrastructure Area (PIA) | Detached Residential | Business | Community Use |
| Property Parcels (DCDB) | Attached Residential | Retail | |
| | Industry | Showroom | |

Maleny PIA Boundary Growth Projections

Sunshine Coast Council

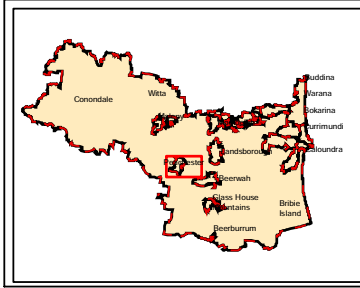
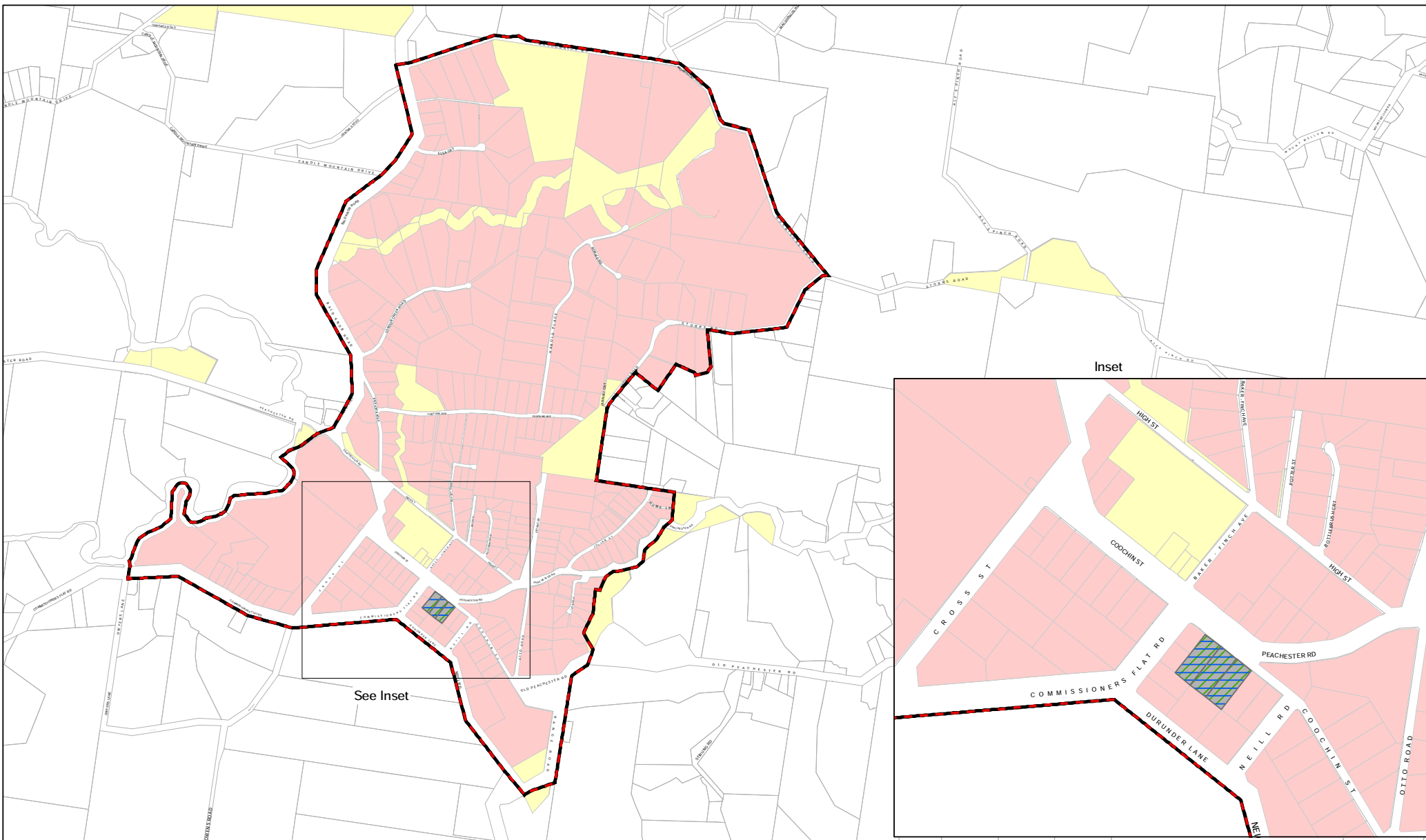
This map is to be read in conjunction with "Maleny Growth Projections Table". Version 1.0, 01/04/05

© Sunshine Coast Council 2010
While every care is taken to ensure the accuracy of this data, Sunshine Coast Council makes no representations or warranties about its accuracy, reliability, completeness or suitability for any particular purpose and disclaims all responsibility and all liability (including without limitation, liability in negligence) for all expenses, losses, damages (including indirect or consequential damage) and costs which may be incurred as a result of the data being inaccurate or incomplete in any way and for any reason.

This map must not be reproduced in any form whole or part without the express written consent of Sunshine Coast Council. Digital Cadastre Database (DCDB) © The State of Queensland (Department of the Environment & Resource Management) [2010]



MAP PIA 1
16 September 2013



Legend

| | | | |
|------------------------------------|----------------------|----------|---------------|
| Priority Infrastructure Area (PIA) | Detached Residential | Business | Community Use |
| Property Parcels (DCDB) | Attached Residential | Retail | |
| | Industry | Showroom | |

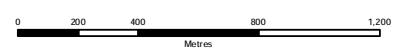
Peachester PIA Boundary Growth Projections

Sunshine Coast Council

This map is to be read in conjunction with "Peachester Growth Projections Table". Version 1.0, 01/04/05

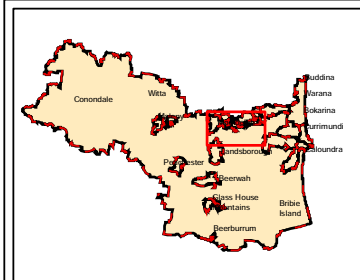
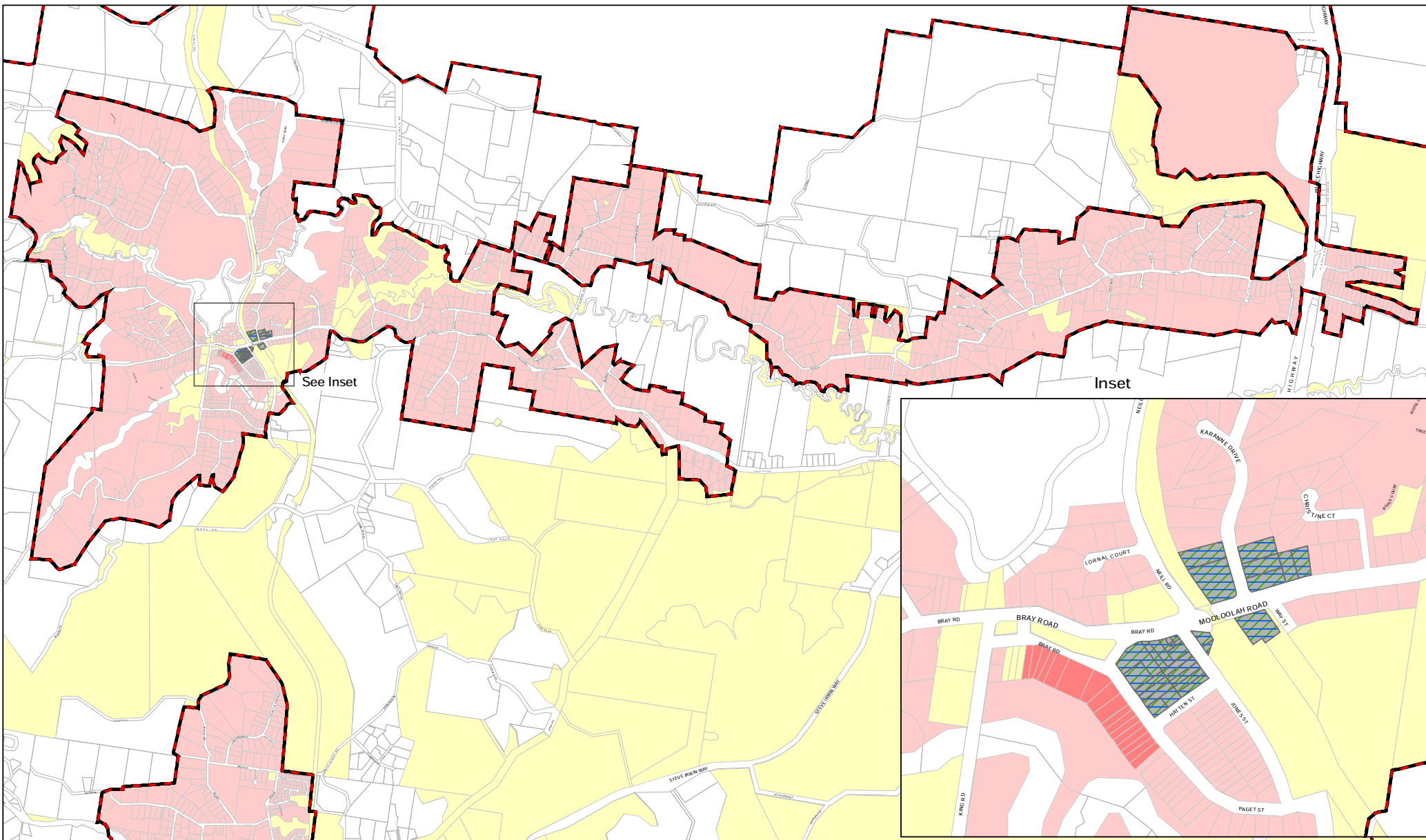
© Sunshine Coast Council 2010
While every care is taken to ensure the accuracy of this data, Sunshine Coast Council makes no representations or warranties about its accuracy, reliability, completeness or suitability for any particular purpose and disclaims all responsibility and all liability (including without limitation, liability in negligence) for all expenses, losses, damages (including indirect or consequential damage) and costs which may be incurred as a result of the data being inaccurate or incomplete in any way and for any reason.

This map must not be reproduced in any form whole or part without the express written consent of Sunshine Coast Council. Digital Cadastre Database (DCDB) © The State of Queensland (Department of the Environment & Resource Management) [2010]



MAP PIA 2

16 September 2013



- Legend**
- Priority Infrastructure Area (PIA)
 - Detached Residential
 - Business
 - Community Use
 - Property Parcels (DCDB)
 - Attached Residential
 - Retail
 - Industry
 - Showroom

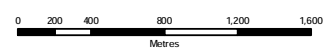
Mooloolah Valley PIA Boundary Growth Projections

Sunshine Coast Council

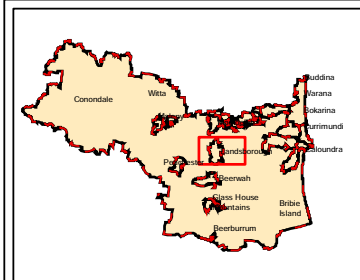
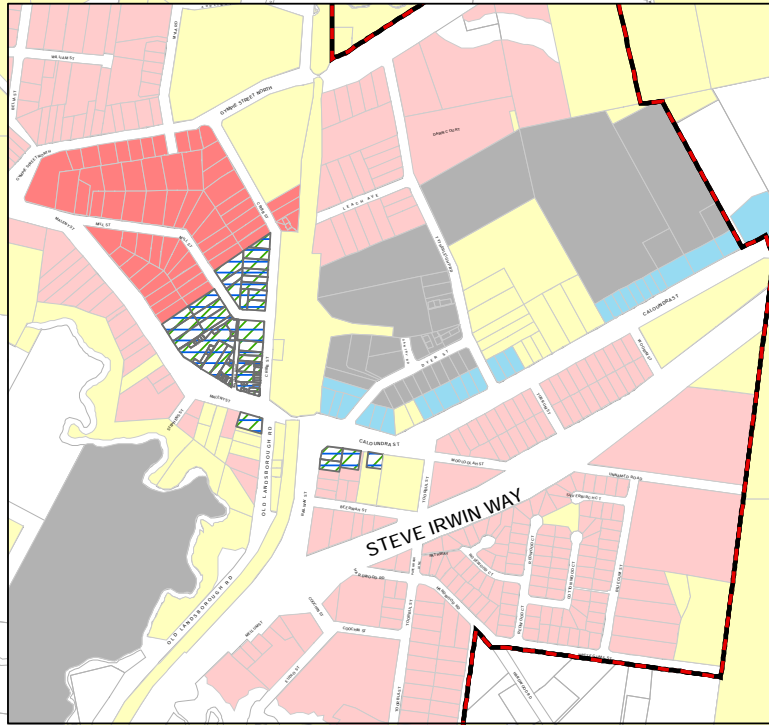
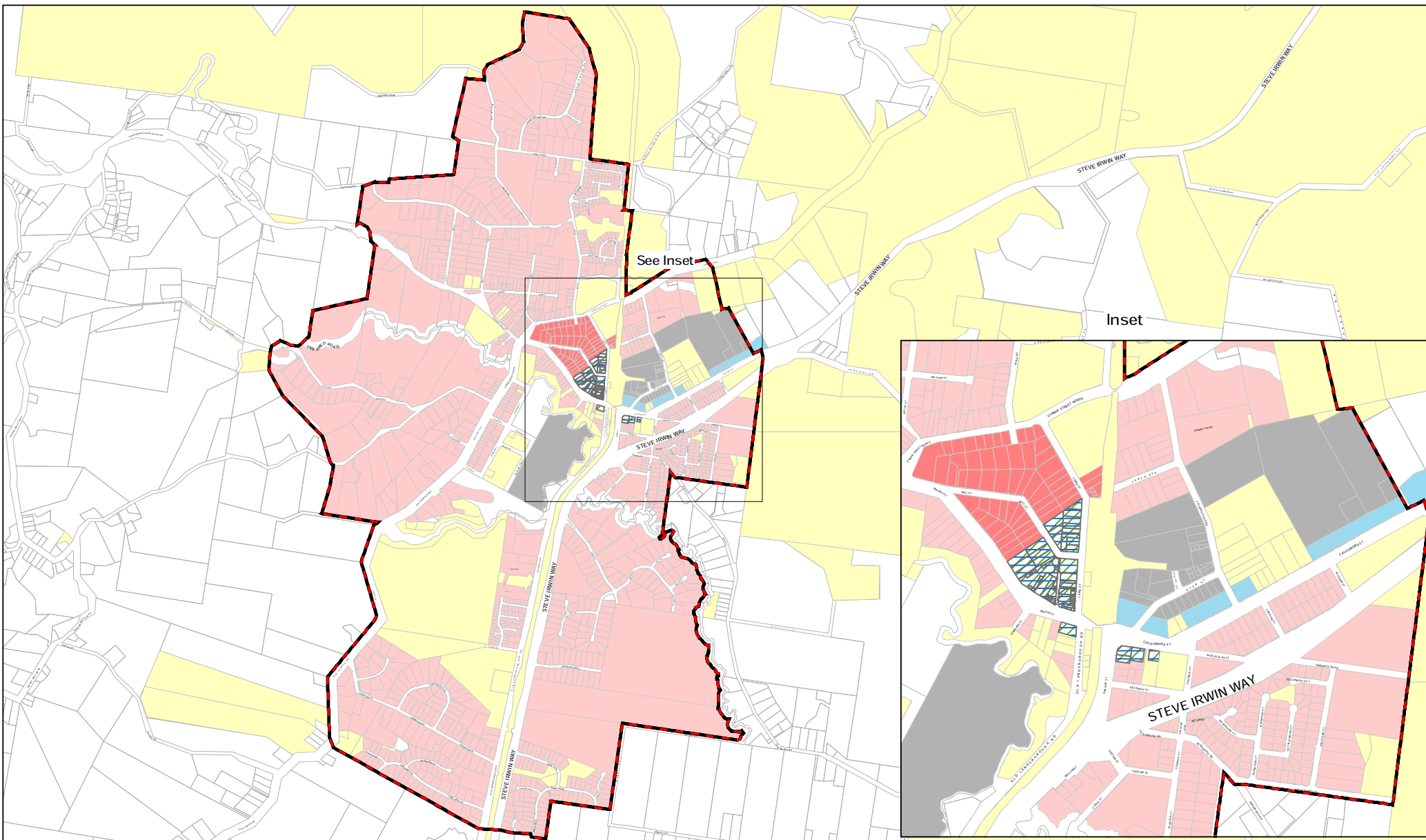
This map is to be read in conjunction with "Mooloolah Valley Growth Projections Table". Version 1.0, 01/04/05

© Sunshine Coast Council 2010
While every care is taken to ensure the accuracy of this data, Sunshine Coast Council makes no representations or warranties about its accuracy, reliability, completeness or suitability for any particular purpose and disclaims all responsibility and all liability (including without limitation, liability in negligence) for all expenses, losses, damages (including indirect or consequential damage) and costs which may be incurred as a result of the data being inaccurate or incomplete in any way and for any reason.

This map must not be reproduced in any form whole or part without the express written consent of Sunshine Coast Council. Digital Cadastre Database (DCDB) © The State of Queensland (Department of the Environment & Resource Management) [2010]



MAP PIA 3
 16 September 2013



Legend

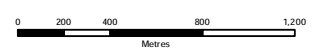
| | | | |
|------------------------------------|----------------------|----------|---------------|
| Priority Infrastructure Area (PIA) | Detached Residential | Business | Community Use |
| Property Parcels (DCDB) | Attached Residential | Retail | |
| | Industry | Showroom | |

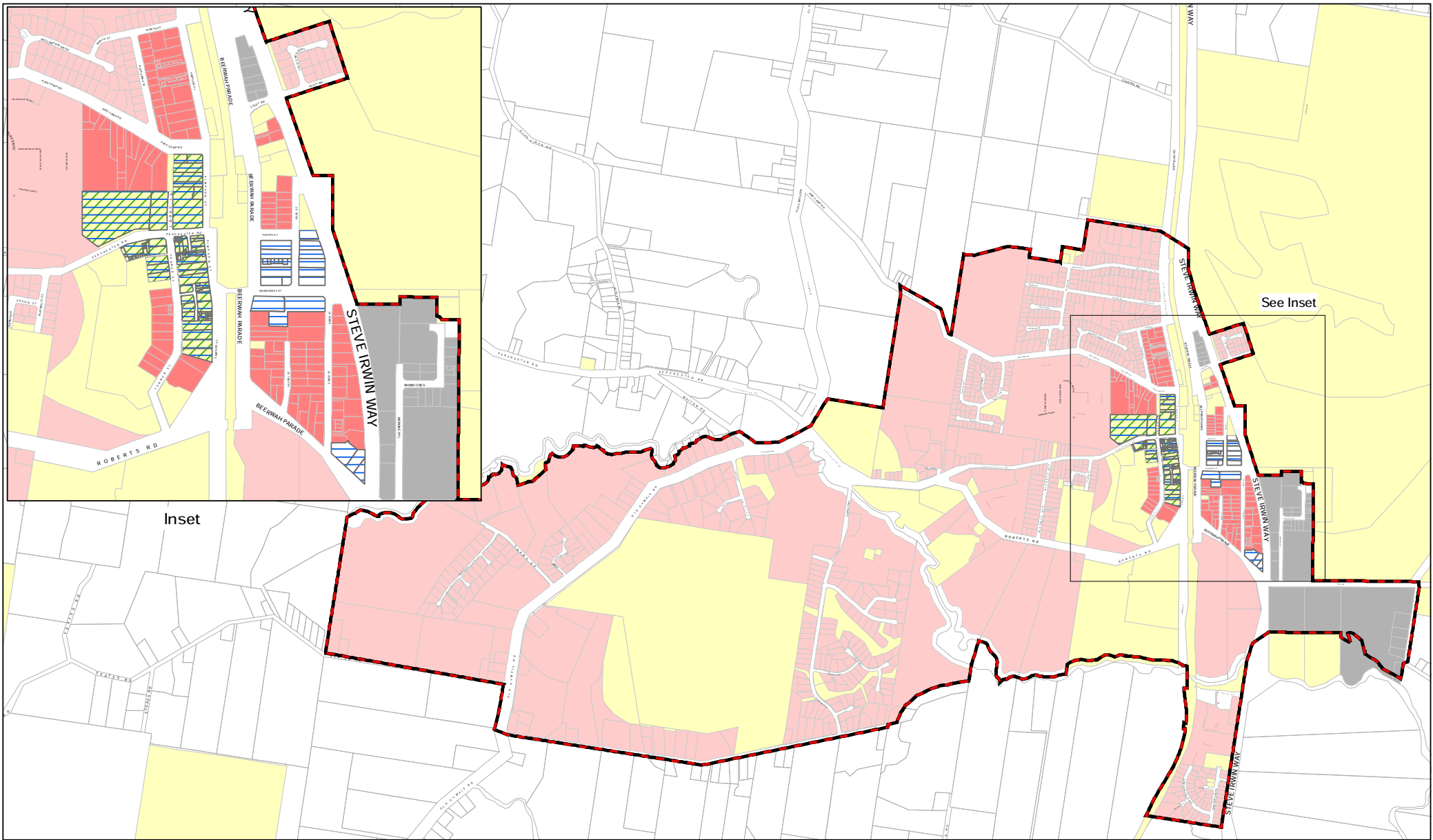
Landsborough PIA Boundary Growth Projections

Sunshine Coast Council

This map is to be read in conjunction with "Landsborough Growth Projections Table". Version 1.0, 01/04/05

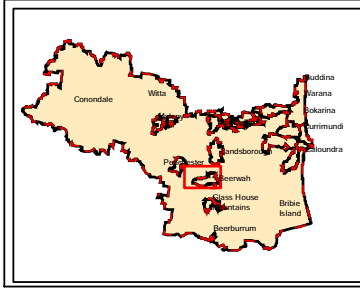
© Sunshine Coast Council 2010
 While every care is taken to ensure the accuracy of this data, Sunshine Coast Council makes no representations or warranties about its accuracy, reliability, completeness or suitability for any particular purpose and disclaims all responsibility and all liability (including without limitation, liability in negligence) for all expenses, losses, damages (including indirect or consequential damages) and costs which may be incurred as a result of the data being inaccurate or incomplete in any way and for any reason.
 This map must not be reproduced in any form whole or part without the express written consent of Sunshine Coast Council. Digital Cadastre Database (DCDB) © The State of Queensland (Department of the Environment & Resource Management) [2010]





Inset

See Inset



- Legend**
- Priority Infrastructure Area (PIA)
 - Property Parcels (DCDB)
 - Detached Residential
 - Attached Residential
 - Industry
 - Business
 - Retail
 - Showroom
 - Community Use

Beerwah PIA Boundary

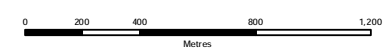
Growth Projections

Sunshine Coast Council

This map is to be read in conjunction with "Beerwah Growth Projections Table". Version 1.0, 01/04/05

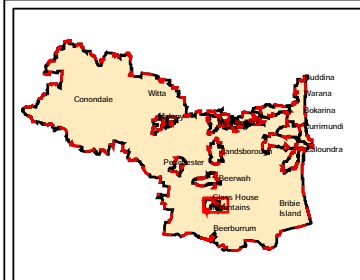
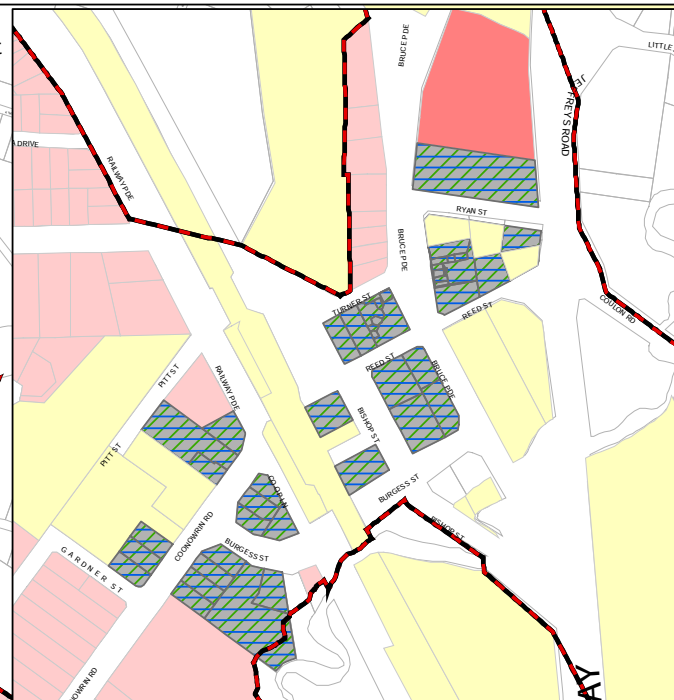
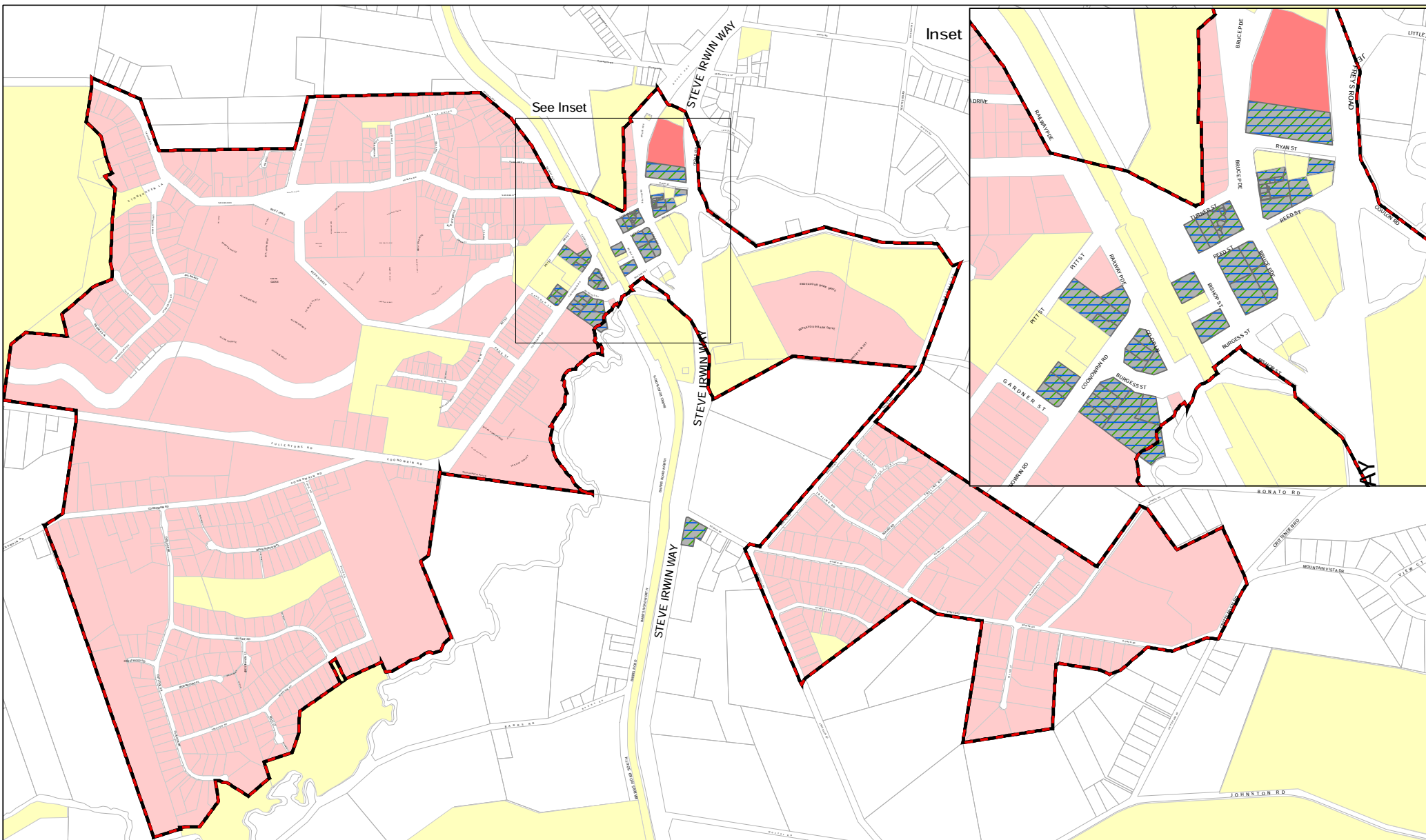
© Sunshine Coast Council 2010
 While every care is taken to ensure the accuracy of this data, Sunshine Coast Council makes no representations or warranties about its accuracy, reliability, completeness or suitability for any particular purpose and disclaims all responsibility and all liability (including without limitation, liability in negligence) for all expenses, losses, damages (including indirect or consequential damage) and costs which may be incurred as a result of the data being inaccurate or incomplete in any way and for any reason.

This map must not be reproduced in any form whole or part without the express written consent of Sunshine Coast Council. Digital Cadastre Database (DCDB) © The State of Queensland (Department of the Environment & Resource Management) [2010]



MAP PIA 5

16 September 2013



- Legend**
- Priority Infrastructure Area (PIA)
 - Property Parcels (DCDB)
 - Detached Residential
 - Attached Residential
 - Industry
 - Community Use
 - Business
 - Retail
 - Showroom

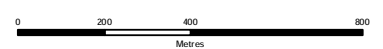
Glasshouse Mountains PIA Boundary Growth Projections

Sunshine Coast Council

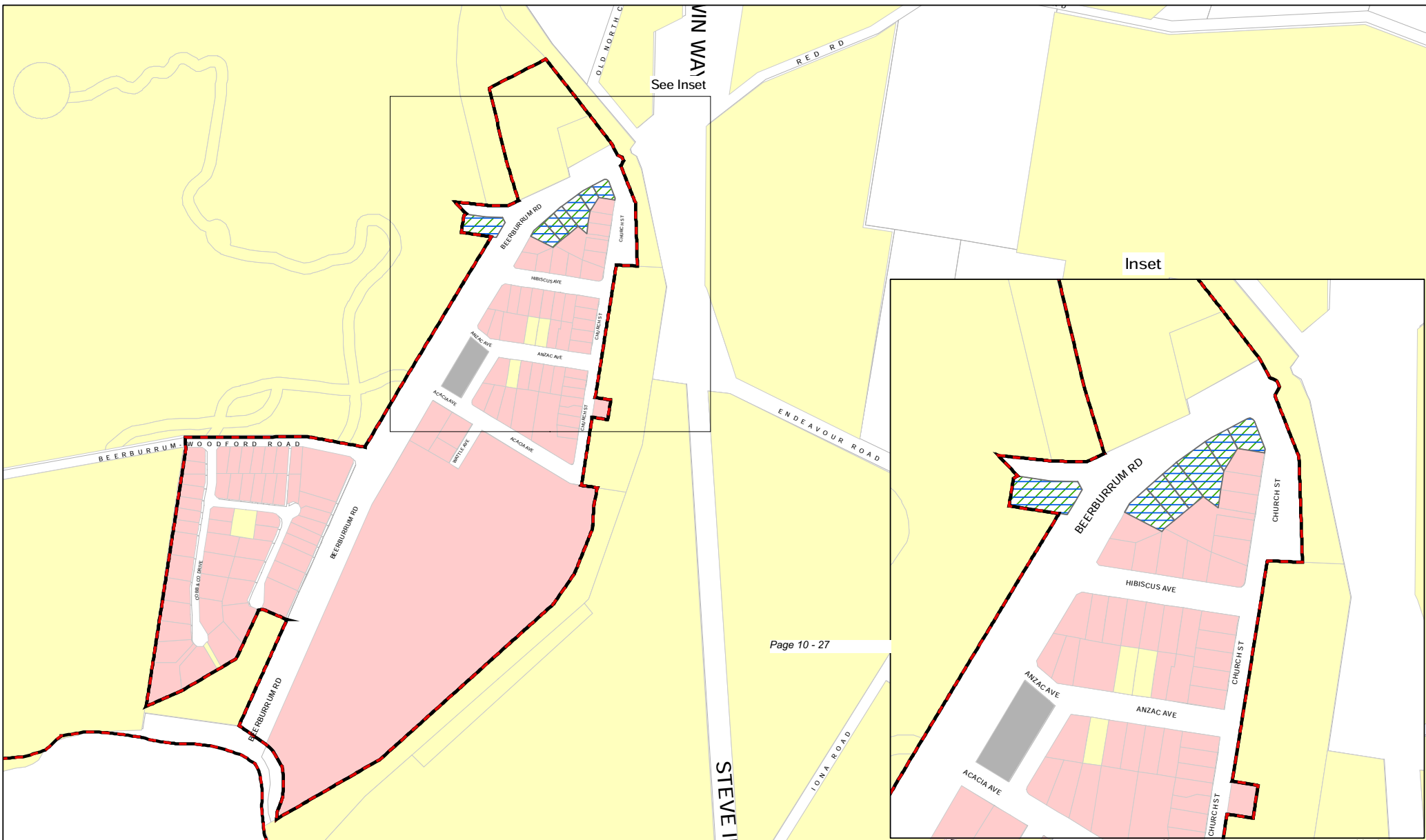
This map is to be read in conjunction with "Glasshouse Mountains Growth Projections Table". Version 1.0, 01/04/05

© Sunshine Coast Council 2010
While every care is taken to ensure the accuracy of this data, Sunshine Coast Council makes no representations or warranties about its accuracy, reliability, completeness or suitability for any particular purpose and disclaims all responsibility and all liability (including without limitation, liability in negligence) for all expenses, losses, damages (including indirect or consequential damages) and costs which may be incurred as a result of the data being inaccurate or incomplete in any way and for any reason.

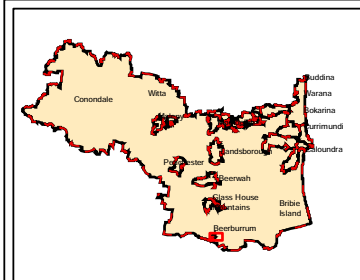
This map must not be reproduced in any form whole or part without the express written consent of Sunshine Coast Council, Digital Cadastral Database (DCDB) © The State of Queensland (Department of the Environment & Resource Management) [2010]



MAP PIA 6
 16 September 2013



Page 10 - 27



- Legend**
- Priority Infrastructure Area (PIA)
 - Property Parcels (DCDB)
 - Detached Residential
 - Attached Residential
 - Industry
 - Business
 - Retail
 - Showroom
 - Community Use

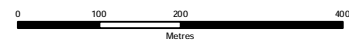
Beerburrum PIA Boundary Growth Projections

Sunshine Coast
Council

This map is to be read in conjunction with "Beerburrum Growth Projections Table". Version 1.0, 01/04/05

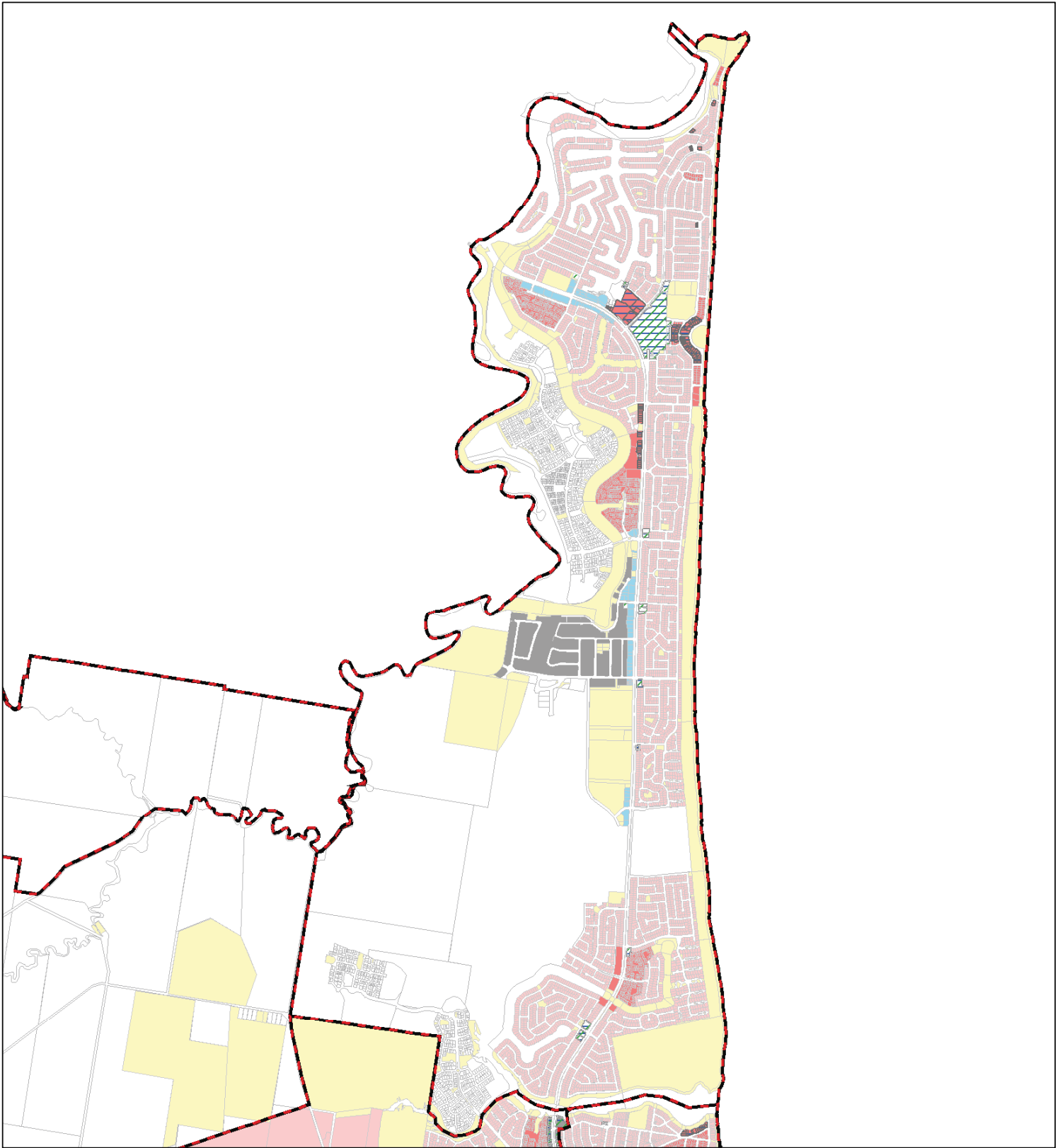
© Sunshine Coast Council 2010
While every care is taken to ensure the accuracy of this data, Sunshine Coast Council makes no representations or warranties about its accuracy, reliability, completeness or suitability for any particular purpose and disclaims all responsibility and all liability (including without limitation, liability in negligence) for all expenses, losses, damages (including indirect or consequential damages) and costs which may be incurred as a result of the data being inaccurate or incomplete in any way and for any reason.

This map must not be reproduced in any form whole or part without the express written consent of Sunshine Coast Council, Digital Cadastre Database (DCDB) © The State of Queensland (Department of the Environment & Resource Management) [2010]



MAP PIA 7

16 September 2013

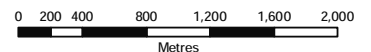


Kawana Waters PIA Boundary Growth Projections

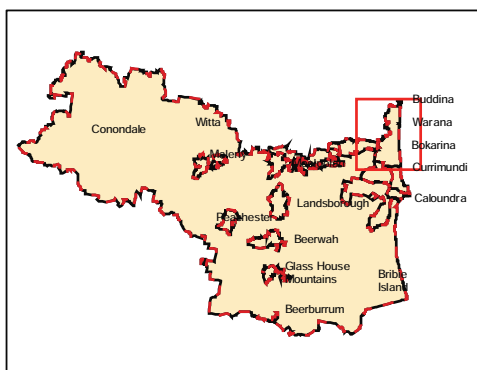
Sunshine Coast
Council

Legend

| | |
|------------------------------------|---------------|
| Priority Infrastructure Area (PIA) | Industry |
| Property Parcels (DCDB) | Business |
| Kawana DCP | Retail |
| Detached Residential | Showroom |
| Attached Residential | Community Use |

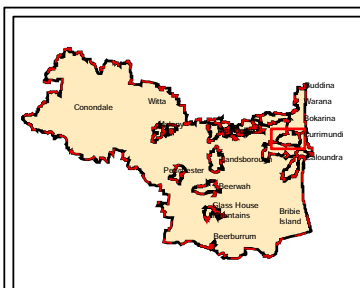
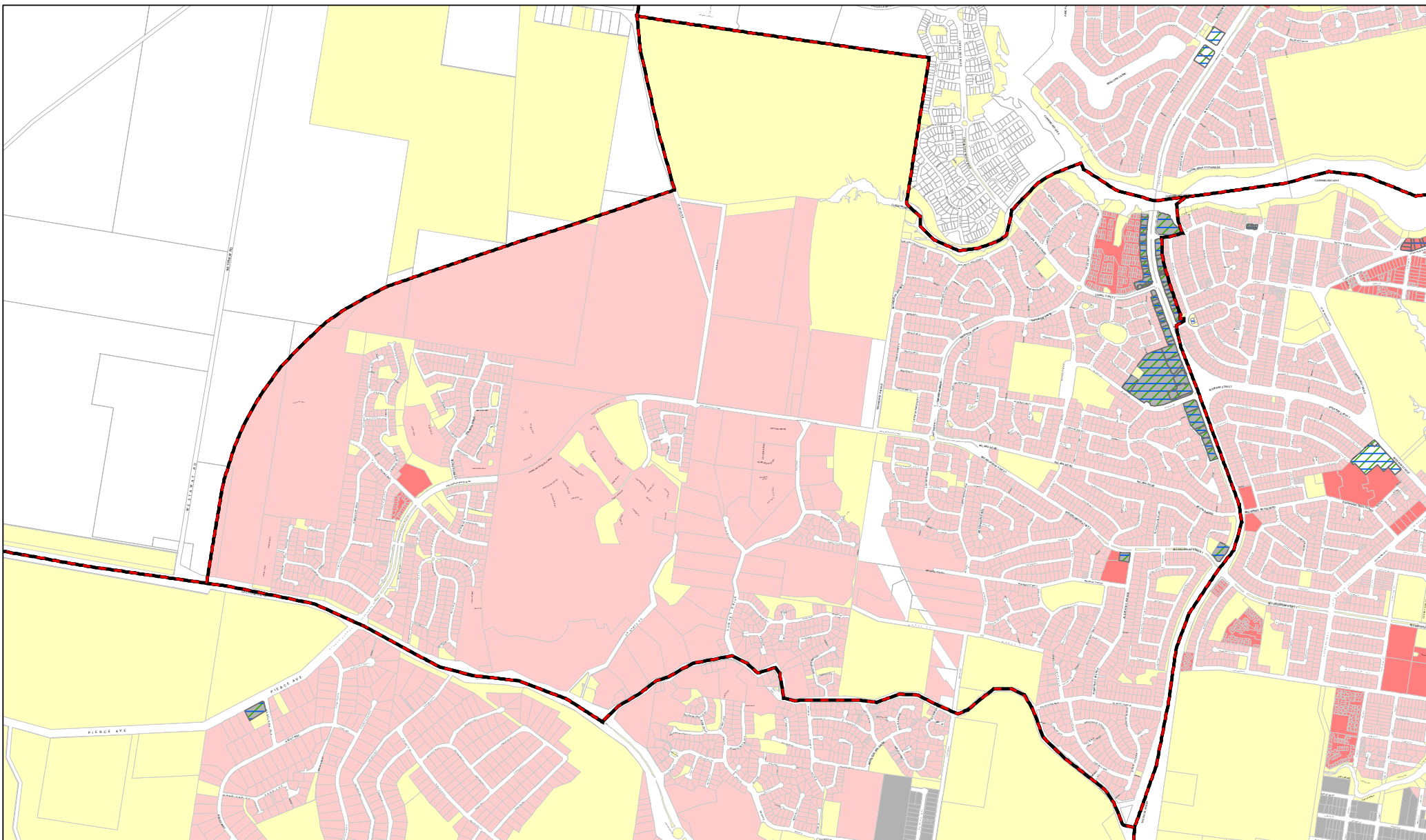


MAP PIA 8
16 September 2013



© Sunshine Coast Council 2010
While every care is taken to ensure the accuracy of this data, Sunshine Coast Council makes no representations or warranties about its accuracy, reliability, completeness or suitability for any particular purpose and disclaims all responsibility and all liability (including without limitation, liability in negligence) for all expenses, losses, damages (including indirect or consequential damage) and costs which may be incurred as a result of the data being inaccurate or incomplete in any way and for any reason.

This map must not be reproduced in any form whole or part without the express written consent of Sunshine Coast Council, Digital Cadastre Database (DCDB) © The State of Queensland (Department of the Environment & Resource Management) [2010]



- Legend**
- Priority Infrastructure Area (PIA)
 - Property Parcels (DCDB)
 - Detached Residential
 - Attached Residential
 - Industry
 - Business
 - Retail
 - Showroom
 - Community Use

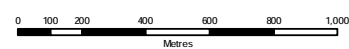
Caloundra West PIA Boundary Growth Projections

Sunshine Coast Council

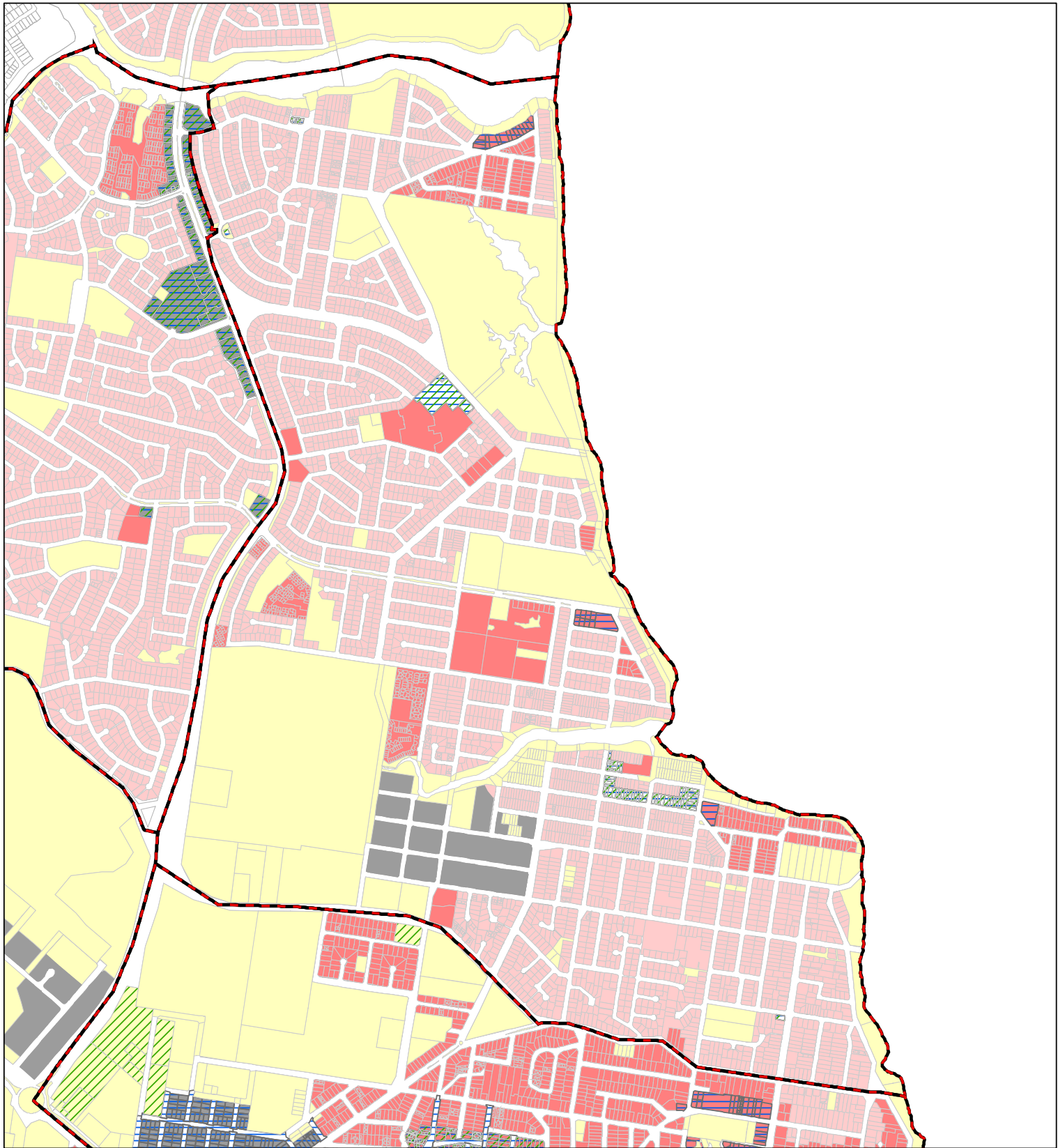
This map is to be read in conjunction with "Caloundra West Growth Projections Table". Version 1.0, 01/04/05

© Sunshine Coast Council 2010
While every care is taken to ensure the accuracy of this data, Sunshine Coast Council makes no representations or warranties about its accuracy, reliability, completeness or suitability for any particular purpose and disclaims all responsibility and all liability (including without limitation, liability in negligence) for all expenses, losses, damages (including indirect or consequential damages) and costs which may be incurred as a result of the data being inaccurate or incomplete in any way and for any reason.

This map must not be reproduced in any form whole or part without the express written consent of Sunshine Coast Council, Digital Cadastre Database (DCDB) © The State of Queensland (Department of the Environment & Resource Management) [2010]



MAP PIA 9
 16 September 2013



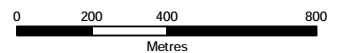
Caloundra Eastern Beaches PIA Boundary Growth Projections

Sunshine Coast
Council

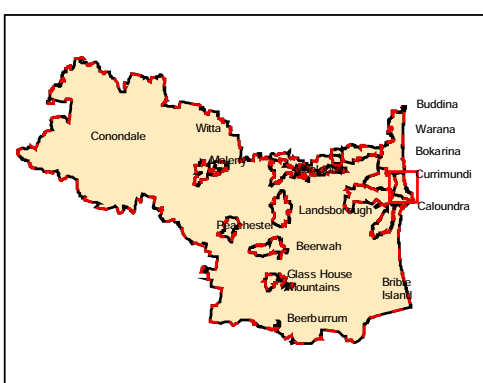
Legend

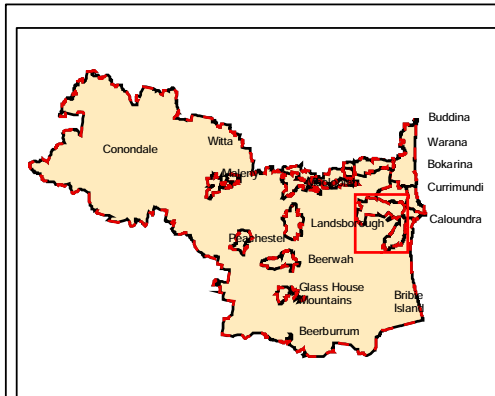
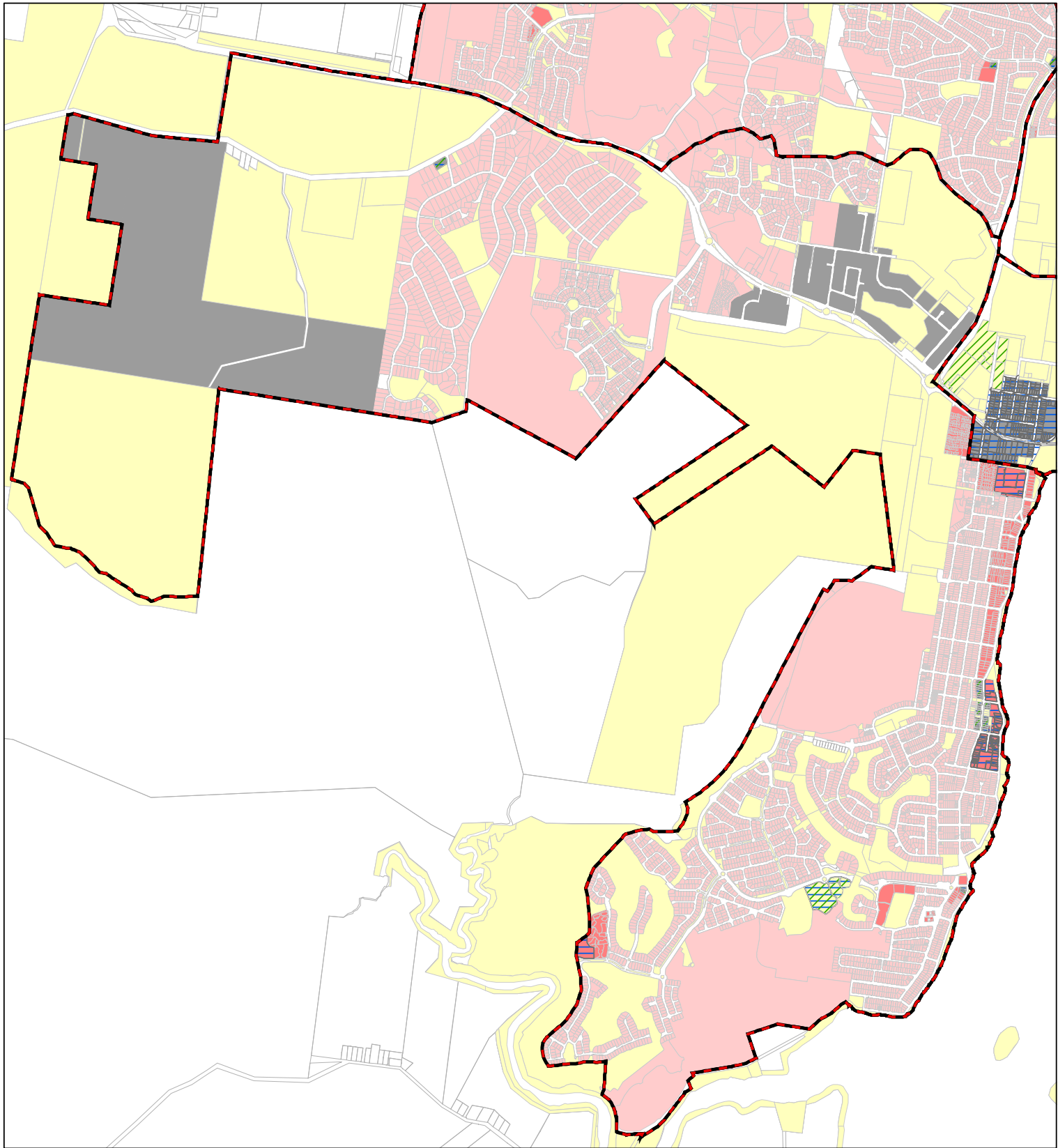
- Priority Infrastructure Area (PIA)
- Property Parcels (DCDB)
- Detached Residential
- Attached Residential
- Industry
- Business
- Retail
- Showroom
- Community Use

© Sunshine Coast Council 2010
While every care is taken to ensure the accuracy of this data, Sunshine Coast Council makes no representations or warranties about its accuracy, reliability, completeness or suitability for any particular purpose and disclaims all responsibility and all liability (including without limitation, liability in negligence) for all expenses, losses, damages (including indirect or consequential damage) and costs which may be incurred as a result of the data being inaccurate or incomplete in any way and for any reason.



MAP PIA 10
16 September 2013



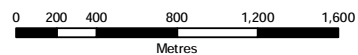


Caloundra South PIA Boundary Growth Projections

Sunshine Coast
Council

Legend

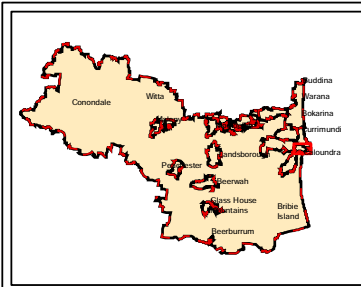
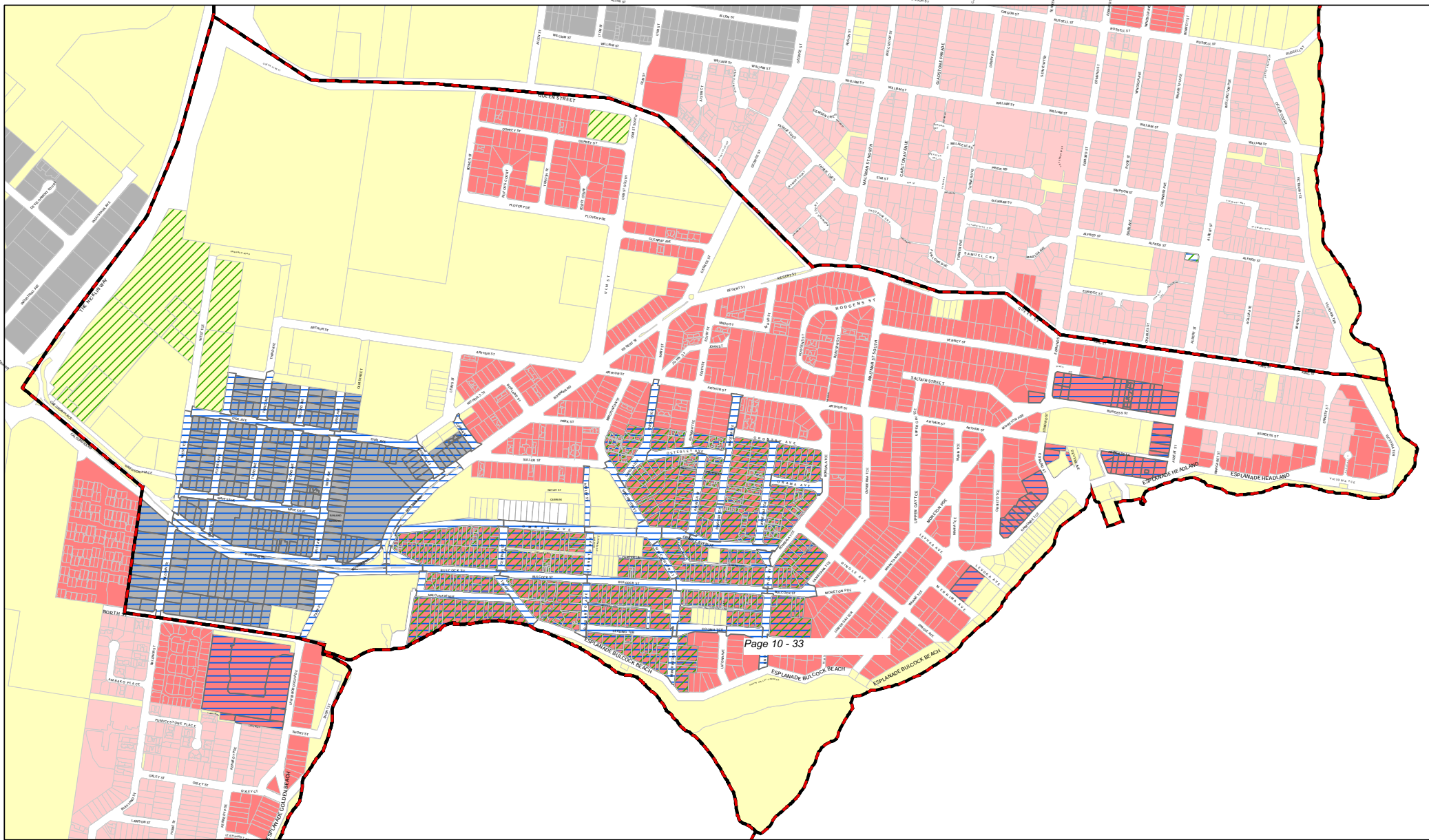
- Priority Infrastructure Area (PIA)
- Property Parcels (DCDB)
- Detached Residential
- Attached Residential
- Industry
- Business
- Retail
- Showroom
- Community Use



© Sunshine Coast Council 2010
While every care is taken to ensure the accuracy of this data, Sunshine Coast Council makes no representations or warranties about its accuracy, reliability, completeness or suitability for any particular purpose and disclaims all responsibility and all liability (including without limitation, liability in negligence) for all expenses, losses, damages (including indirect or consequential damages) and costs which may be incurred as a result of the data being inaccurate or incomplete in any way and for any reason.



MAP PIA 11
16 September 2013



Legend

- Priority Infrastructure Area (PIA)
- Property Parcels (DCDB)
- Detached Residential
- Attached Residential
- Industry
- Business
- Retail
- Showroom
- Community Use

Caloundra Central PIA Boundary Growth Projections



This map is to be read in conjunction with "Caloundra Central Growth Projections Table". Version 1.0, 01/04/05

© Sunshine Coast Council 2010
While every care is taken to ensure the accuracy of this data, Sunshine Coast Council makes no representations or warranties about its accuracy, reliability, completeness or suitability for any particular purpose and disclaims all responsibility and all liability (including indirect or consequential damages) and costs which may be incurred as a result of the data being inaccurate or incomplete in any way and for any reason.

This map must not be reproduced in any form whole or part without the express written consent of Sunshine Coast Council, Digital Cadastre Database (DCDB) © The State of Queensland (Department of the Environment & Resource Management) [2010]



MAP PIA 12
 16 September 2013