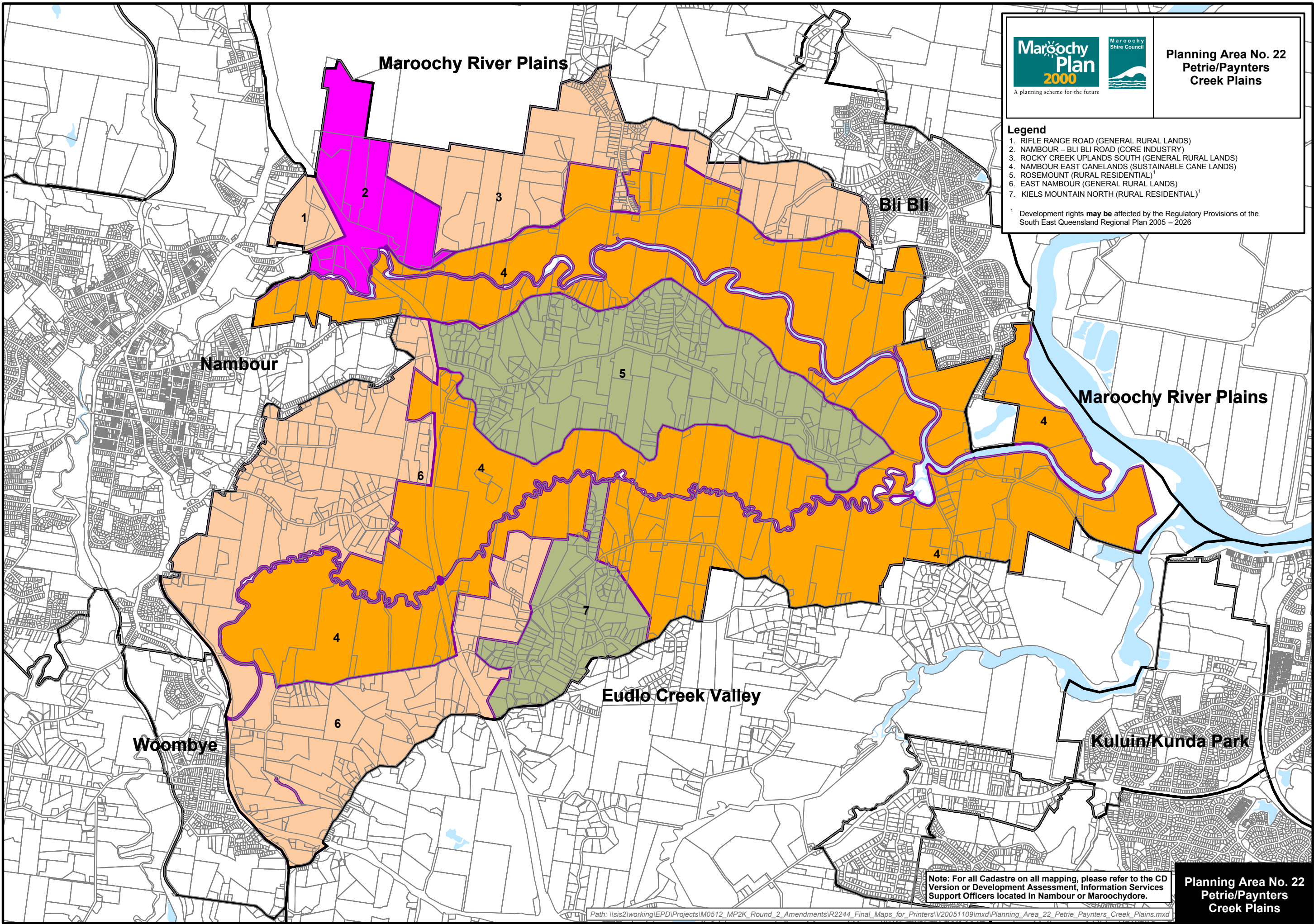


**Legend**

- 1. RIFLE RANGE ROAD (GENERAL RURAL LANDS)
- 2. NAMBOUR – BLI BLI ROAD (CORE INDUSTRY)
- 3. ROCKY CREEK UPLANDS SOUTH (GENERAL RURAL LANDS)
- 4. NAMBOUR EAST CANELANDS (SUSTAINABLE CANE LANDS)
- 5. ROSEMOUNT (RURAL RESIDENTIAL)<sup>1</sup>
- 6. EAST NAMBOUR (GENERAL RURAL LANDS)
- 7. KIELS MOUNTAIN NORTH (RURAL RESIDENTIAL)<sup>1</sup>

<sup>1</sup> Development rights may be affected by the Regulatory Provisions of the South East Queensland Regional Plan 2005 – 2026



Note: For all Cadastre on all mapping, please refer to the CD Version or Development Assessment, Information Services Support Officers located in Nambour or Maroochydore.