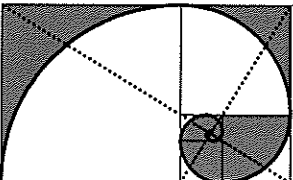
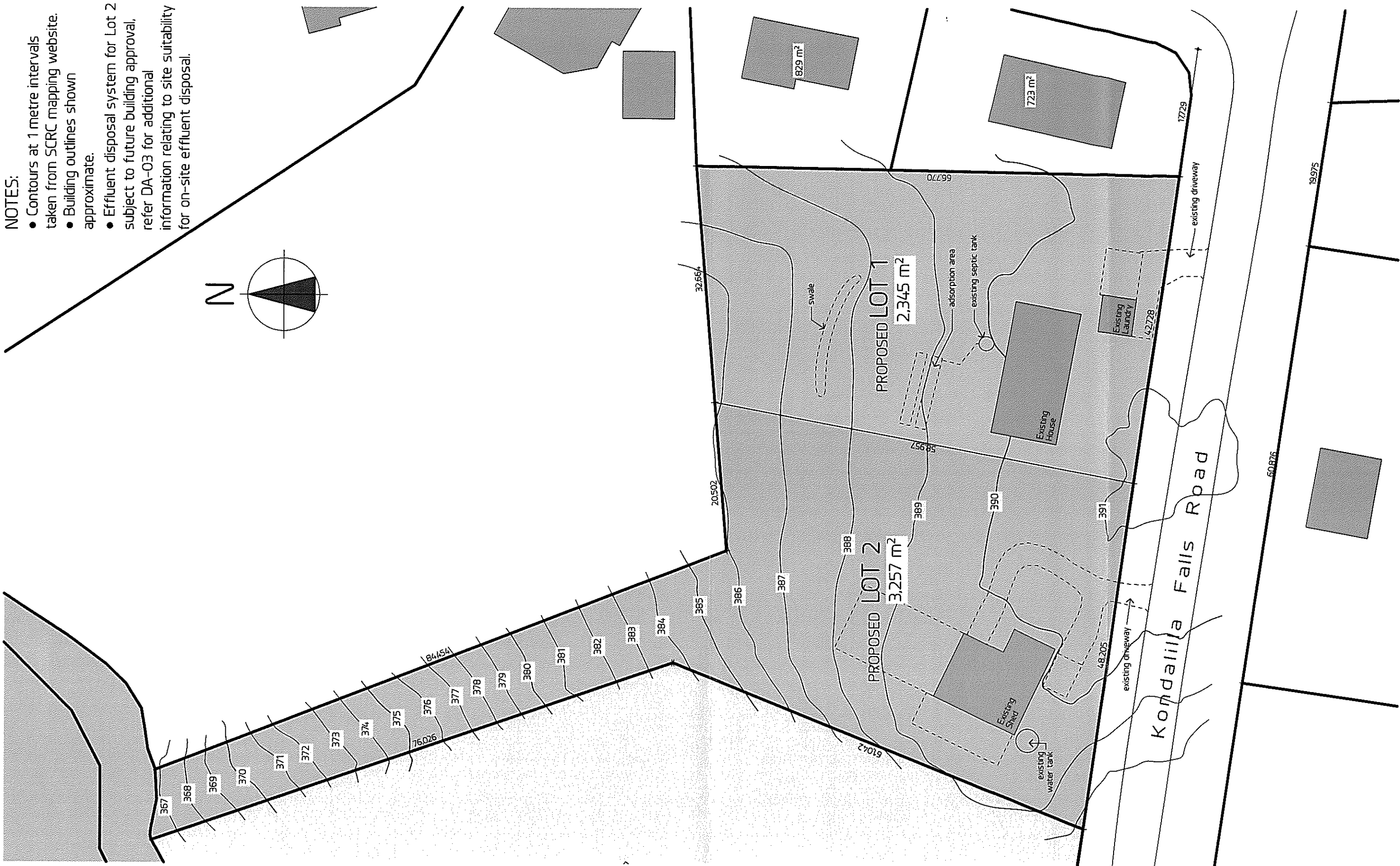
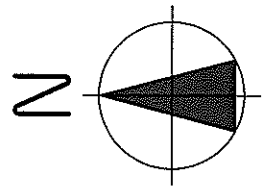


- NOTES:**
- Contours at 1 metre intervals taken from SCRC mapping website.
 - Building outlines shown approximate.
 - Effluent disposal system for Lot 2 subject to future building approval. refer DA-03 for additional information relating to site suitability for on-site effluent disposal.



Proposed Sub-division (1 into 2 Lots) at 35-39 Kondalilla Falls Road, Flaxton
 Lot 58 RP14.1642
 drawn by: S C

Dwg: Proposed Lot Reconfiguration Plan
 Dwg No. DA-02
 Scale 1:500
 Date 15 Sept. 2012