

# VISION

'TO CREATE A MEMORABLE REGIONAL SPORTS AND DISTRICT LEVEL RECREATION FACILITY THAT REFLECTS THE SITE'S CHARACTER AND PROMOTES COUNCIL'S VISION FOR A HEALTHY, SMART AND CREATIVE COMMUNITY'

# LEGEND

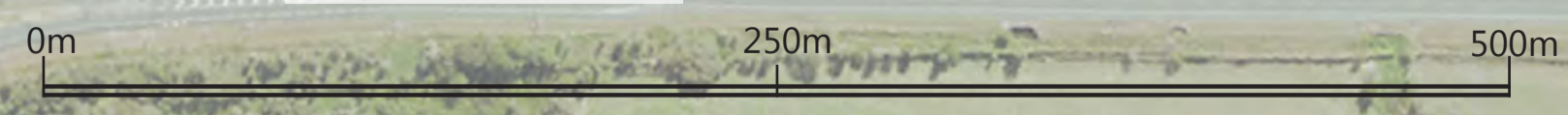
- ① Shared Clubhouse - Facilities for Cricket and Soccer
- ② Shared Clubhouse - Plaza and 'The Green'  
A shallow sloping space for social events and gatherings
- ③ Oval Field Precinct - Premier Oval
- ④ Oval Field Precinct - Second Oval
- ⑤ Cricket Training Nets
- ⑥ Rectangular Field Precinct - Premier Field
- ⑦ Rectangular Field Precinct
- ⑧ Expansion Field Precinct (4 x Rectangular Fields with Oval Overlay)
- ⑨ Hardcourts Precinct and Clubhouse
- ⑩ Indoor Recreation Centre
- ⑪ Youth Activity Plaza - Wheeled / Peddle, Ninja Warrior / Parkour, Cycle (Pump) Track, Shelters, BBQ and Toilet Facilities. Cafe Opportunity.
- ⑫ Children's Playground with an All Abilities Area
- ⑬ Nature Themed Play Space and Open Space
- ⑭ Pathway - Linking Sports / Recreation Precincts
- ⑮ Recreational Open Space (Event Opportunities)
- ⑯ BBQ Shelters
- ⑰ Fitness Equipment Stations
- ⑱ Fitness Trail
- ⑲ Infrastructure for Events i.e Bump in Stages
- ⑳ Toilet Facilities (with Disc Golf Lockable Storage)
- ㉑ Criterium Track (Cycling) - Entry with Shelter and Seating
- ㉒ Criterium Track - 350m, 1km and 1.8km Circuits
- ㉓ Dog Park - Large Dog Area
- ㉔ Dog Park - Small Dog Area
- ㉕ Dog Park - Agility Course
- ㉖ Dog Park Access, Car Park and Toilet Facilities
- ㉗ Potential Disc Golf Course
- ㉘ Pedestrian and Cycle Access and Pathway
- ㉙ Nature Trail - Walking Routes
- ㉚ Wetland Trail, Bridges and Shelters - Nature viewing
- ㉛ Existing Drainage Channels
- ㉜ Natural Drainage Channels
- ㉝ Lake (Irrigation Storage and Stormwater Detention)
- ㉞ Stormwater Harvesting Wetland (Treatment of runoff)
- ㉟ Open Space and Tree Plantings
- ㊱ Revegetation Planting
- ㊲ Maintenance / Operations Facility
- ㊳ Car Parking
- ㊴ Bus Drop Off / Collection Area
- ㊵ Bus Parking Area
- ㊶ Internal Road Raised Crossing and Slow Points
- ㊷ Future Proposed Electrical Easement (with overflow perpendicular parking)
- ㊸ Site Access Road subject to State Government Approvals.
- ㊹ Wetland Trail Parking, Interpretation and Trail Head



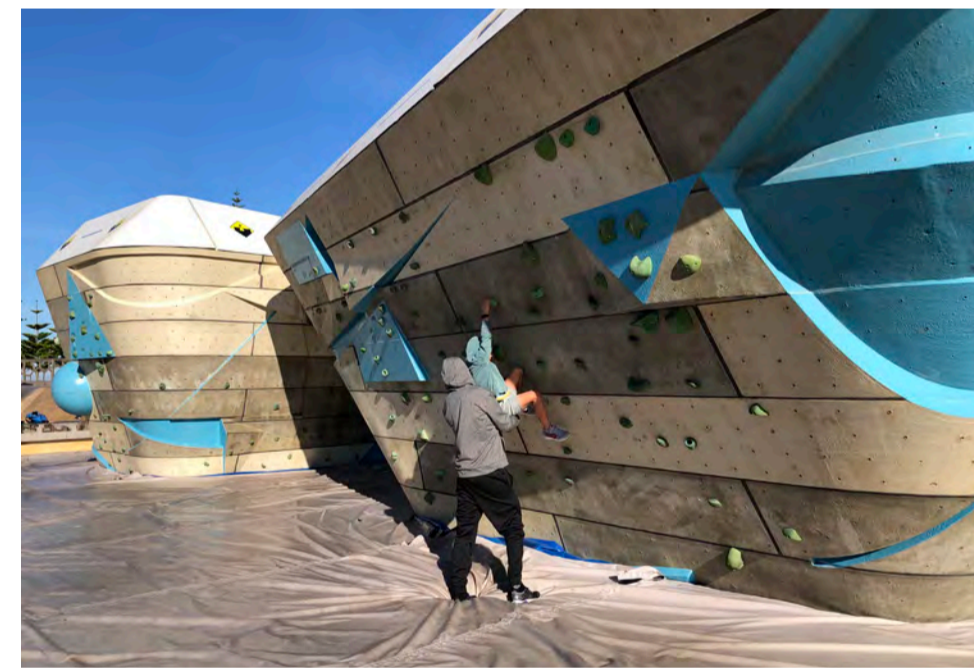
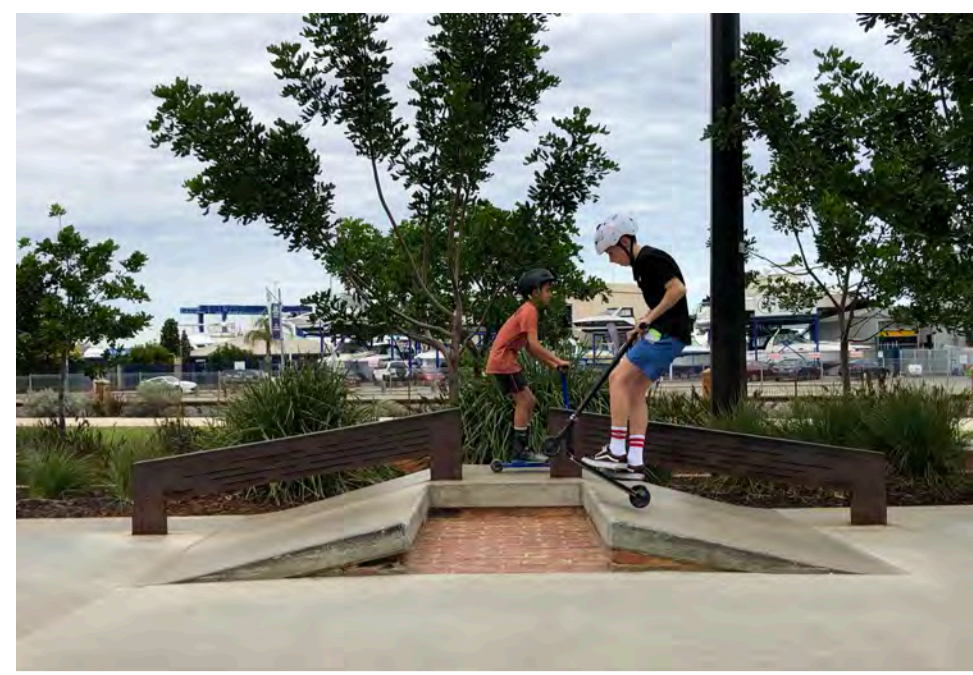
# DESIGN PRINCIPLES

- CREATE A HIGHLY FUNCTIONAL REGIONAL SPORTS FACILITY
- CREATE A UNIQUE DISTRICT RECREATION PARK FOR ALL AGES AND ABILITIES
- PROVIDE A ROBUST LOCAL LANDSCAPE CHARACTER
- CREATE A PLACE FOR ALL OF THE COMMUNITY TO ENJOY
- BE SYMPATHETIC TO THE SITE'S ENVIRONMENT SYSTEMS SUCH AS WATER, FLORA AND FAUNA MOVEMENTS
- EMBRACE BEST PRACTICE FOR CLIMATE-RESPONSIVE DESIGN FOR OUR SUBTROPICAL CLIMATE AND LIFESTYLE
- EMPLOY SUSTAINABILITY PRINCIPLES, INNOVATION AND SMART TECHNOLOGY

OVERALL MASTER PLAN 1:2500







RECREATION AREA PLAN 1:300





# CHARACTER IMAGES

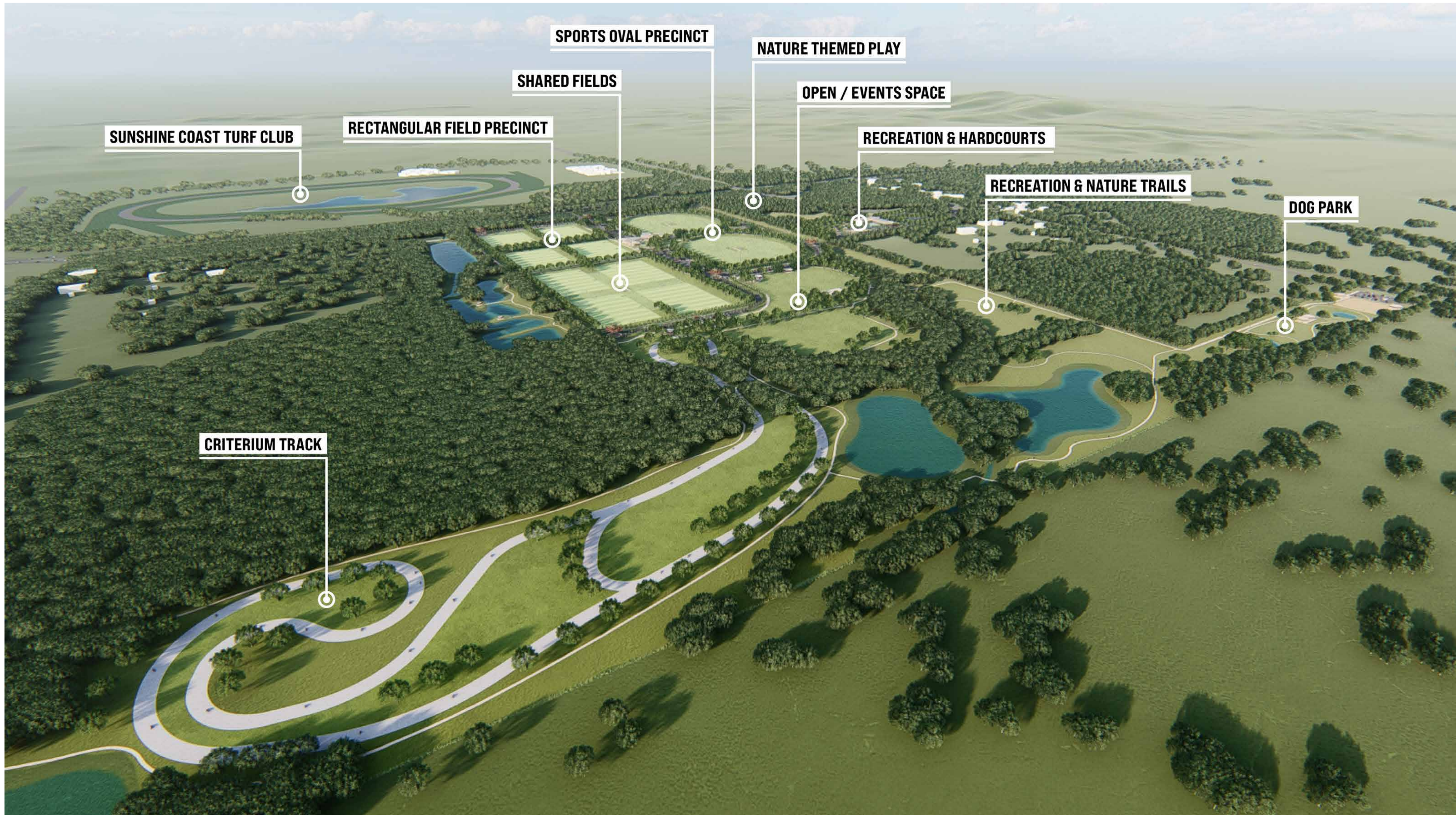






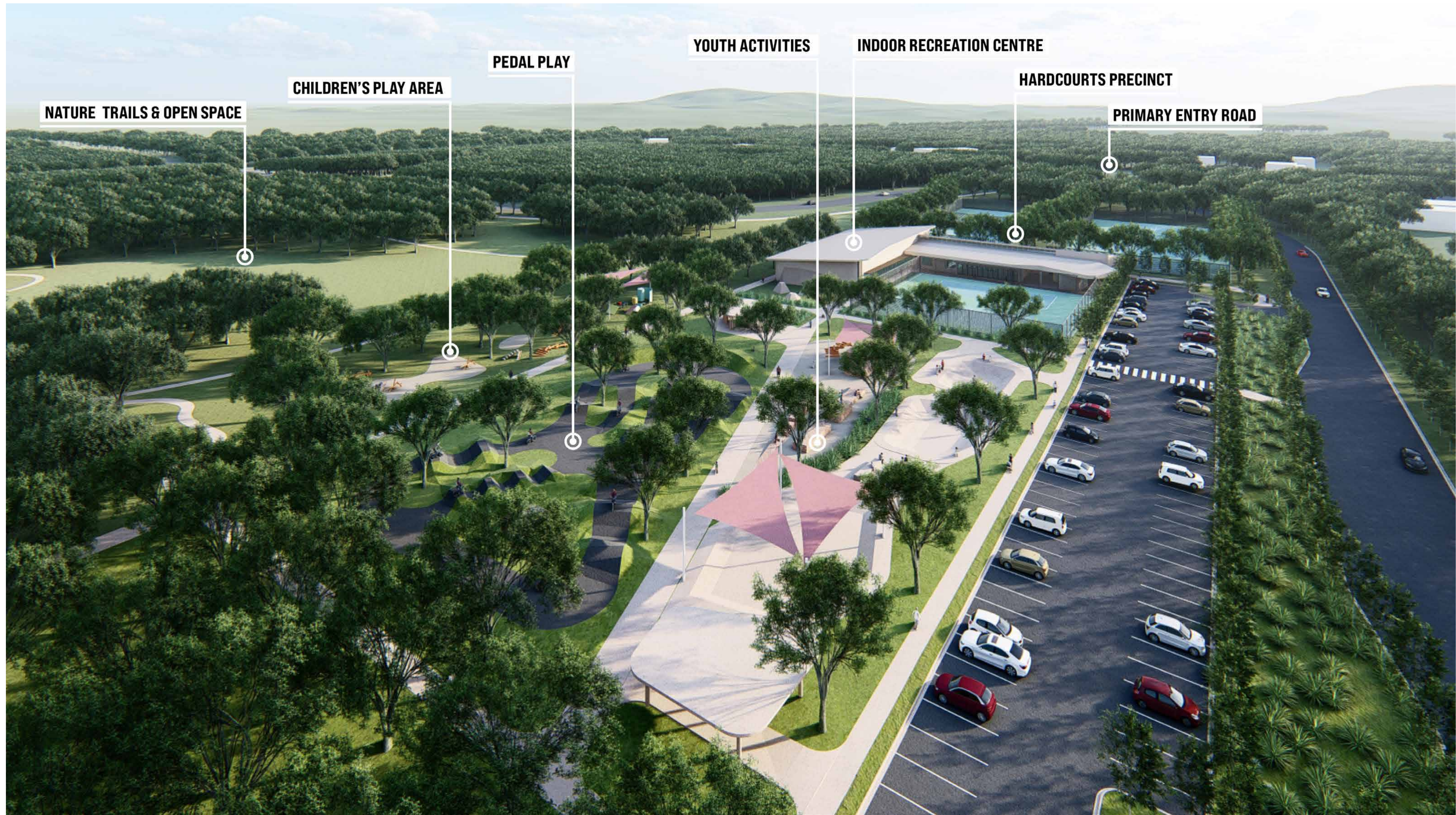
AERIAL VIEW FROM THE SOUTH EAST





AERIAL VIEW FROM THE NORTH





AERIAL VIEW OF THE RECREATIONAL (YOUTH ACTIVITY AND CHILDREN'S PLAY AREA) WITH THE HARDCOURT PRECINCT BEHIND





VIEW OF RECREATIONAL OPEN SPACE AND SPORTS PRECINCT FROM THE NORTH