

Project number: H3747

Brisbane Road Upgrade

Stages 2 and 3

Mooloolaba Transport Corridor Upgrade



Kerb and channel construction works – including some driveway cross overs



Wednesday 16 and Thursday 17 November 2022, 6am to 6pm



Hancock Street and Brisbane Road, Mooloolaba



Some temporary changes to businesses and residents' access - including driveways and private property car parking areas.

Construction overview

As construction continues on the Brisbane Road Upgrade, some areas now ready for new kerb construction.

A 'slip form' kerb construction method will be used. This is where a concrete truck feeds the liquid concrete into a specialist machine which then automatically pours and forms the kerb in one action. The kerb machine travels along the length of the road, forming the kerb behind it.

In cases where the kerb crosses driveways, concrete must be given time to cure (dry and harden) before vehicles can drive over it. For this reason, relevant driveways will be closed for a period of approximately 24 to 48 hours depending on the time of the day when the kerb is poured.

The construction team will liaise directly with relevant properties to advise when kerb works are in progress and to ensure all vehicles are clear of driveways/car park areas.

All businesses will remain OPEN during these works.

Please see the **map on page 2** for the location of these works.

Please note these works are **heavily weather dependent**. Heavy rain or extremely high heat/humidity will prevent the kerb works taking place.

This information has been provided in advance to allow residents and businesses the opportunity to forward plan as much as possible, including communicating any temporary access changes residents, clients, customers and suppliers.

Kerb and channel construction schedule

Wednesday 16 November 6am – 6pm. Brisbane Road, Foote Street and Hancock Street toward Burnett Street *

New kerb and channel will be formed commencing at 75 Brisbane Road (adjacent to Beach Hostel Mooloolaba) and progressing northwards toward Foote Street, then from Foote Street to Hancock Street. The kerb works will then extend around the corner into Hancock Street toward Burnett Street on the southern side.

Thursday 17 November 6am – 6pm. Brisbane Road *

The new median (centre of road) kerbs will be formed with works commencing in Brisbane Road starting near Hancock Street and then progressing southwards toward 75 Brisbane Road (adjacent to Beach Hostel Mooloolaba) throughout the day.

**Depending on the progress of works and weather conditions each day these sections may change. The construction team will advise adjacent residents and businesses of any changes to plan.*

All information contained in this communication is accurate at the time of distribution however works and dates are subject to change due to circumstances outside of Sunshine Coast Council's control.

Temporary changes to traffic conditions including access to some driveways and carparks

Where kerbs cross over driveways it is necessary for driveways to be closed for up to 48 hours to allow the concrete to cure (dry and harden) before vehicles can drive over them.

The construction team will liaise directly with relevant businesses and residential buildings as applicable.

In the cases where driveways and carparks are temporarily inaccessible, free and metered parking is available on [nearby streets](#) and at the [ParknGo Mooloolaba Central](#) car park. ParknGo rates are \$2.50 for the first hour and a flat rate of \$5 per day. Monthly passes are also available.

Traffic control will assist motorists and pedestrians when construction is in progress as required.

Please allow an extra five minutes of travel time by car or on foot during this period.

Please advise residents and clients/customers of potential changes to traffic conditions and alternative parking arrangements.

Businesses will remain OPEN during these works.

Register for project updates and/or contact the project team

To register for construction updates, email your details to mtcu@sunshinecoast.qld.gov.au

For further information, you can contact the project team on 1800 531 597 (during office hours, Monday to Friday 8.30am – 5pm) or email mtcu@sunshinecoast.qld.gov.au

What to expect during these works?

These works involve the use of large vehicles and specialist machinery including concrete trucks and a slip form kerb machine. Intermittent medium level noise is to be expected.

Pedestrians will be moved to alternative footpaths when required.

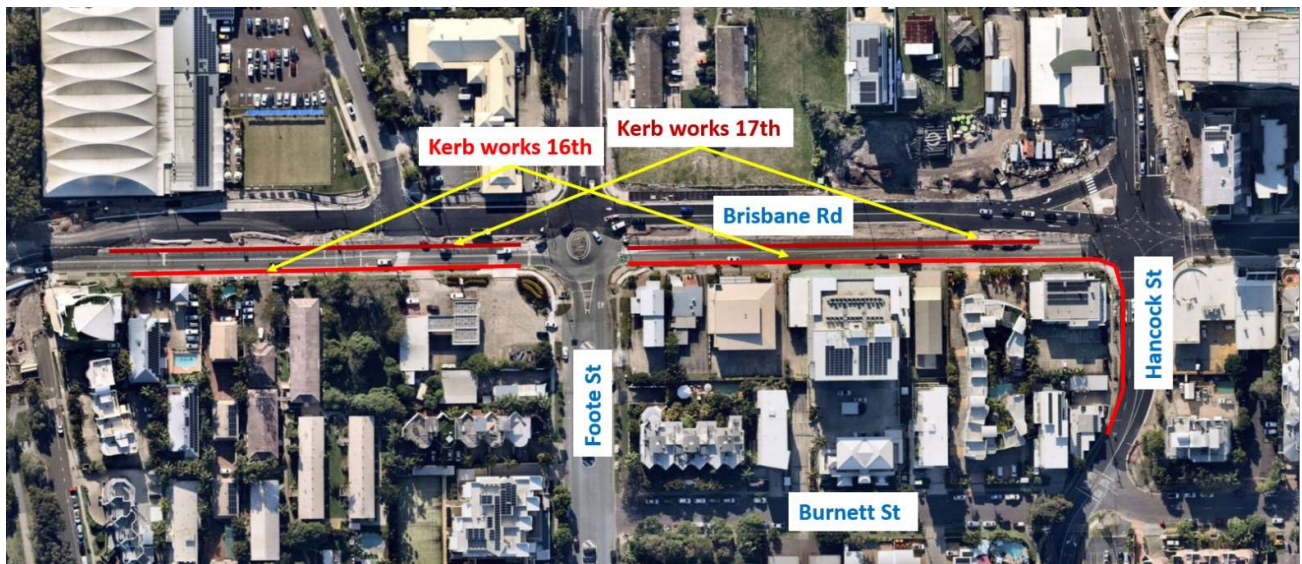


Figure 1. Kerb construction works – including some driveway cross overs and temporary changes to access including some residents and business' car park areas. Wednesday 16 and Thursday 17 November 6am to 6pm