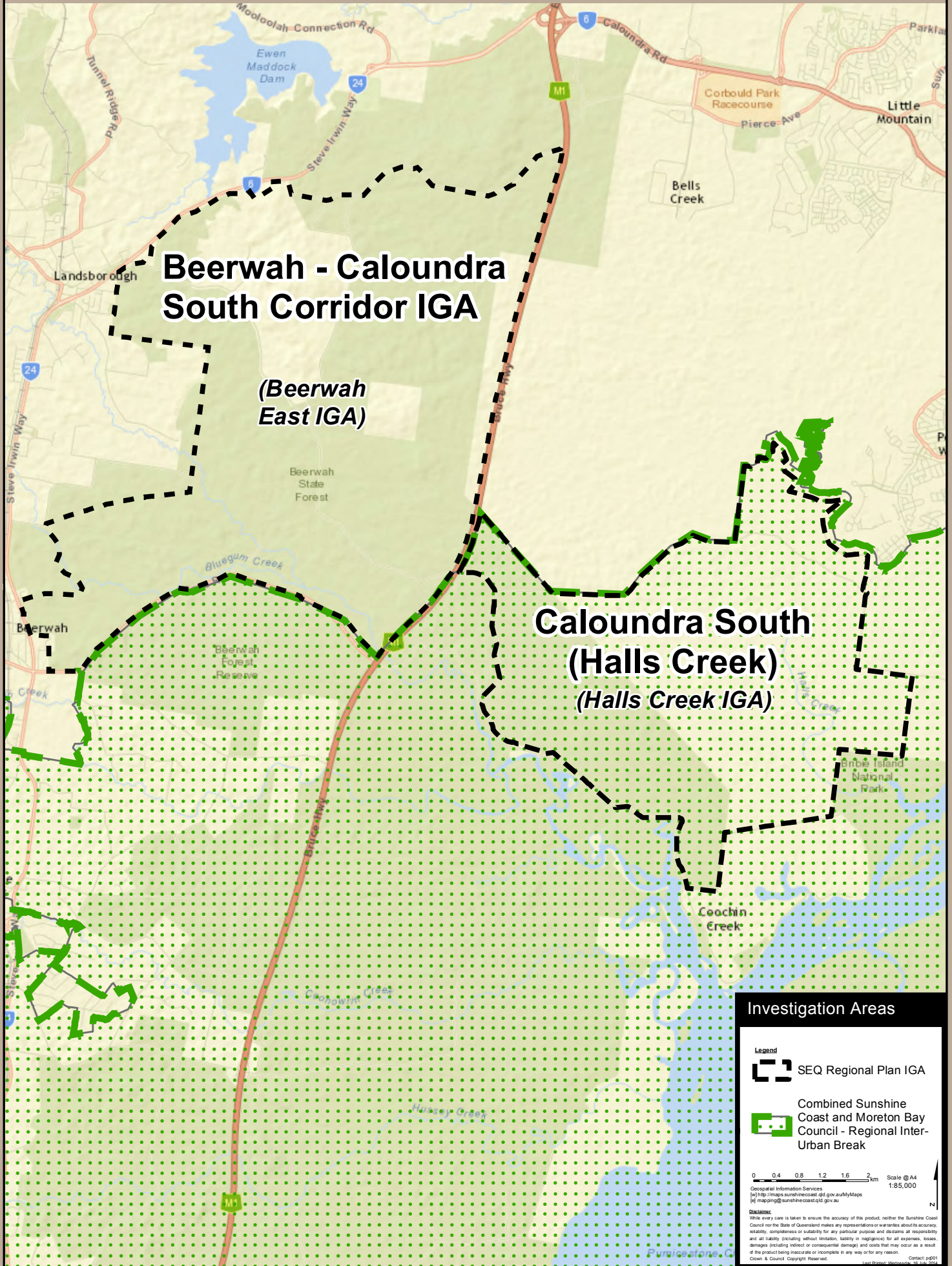


# Map 1 SEQRP Identified Growth Areas





**Beerwah - Caloundra  
South Corridor IGA**

*(Beerwah  
East IGA)*

**Caloundra South  
(Halls Creek)  
(Halls Creek IGA)**

**Investigation Areas**

- Legend**
-  SEQ Regional Plan IGA
  -  Combined Sunshine Coast and Moreton Bay Council - Regional Inter-Urban Break

0 0.4 0.8 1.2 1.6 2 km Scale @A4  
1:85,000

Geospatial Information Services  
(w) <http://maps.sunshinecoast.qld.gov.au/MyMaps>  
(e) [mapping@sunshinecoast.qld.gov.au](mailto:mapping@sunshinecoast.qld.gov.au)

**Disclaimer:** While every care is taken to ensure the accuracy of this product, neither the Sunshine Coast Council nor the State of Queensland makes any representations or warranties about its accuracy, reliability, completeness or suitability for any particular purpose and disclaims all responsibility and all liability (including without limitation, liability in negligence) for all expenses, losses, damages (including indirect or consequential damage) and costs that may occur as a result of the product being inaccurate or incomplete in any way or for any reason.

Contact: pg01  
Crown & Council Copyright Reserved. Last Printed: 16/07/2014