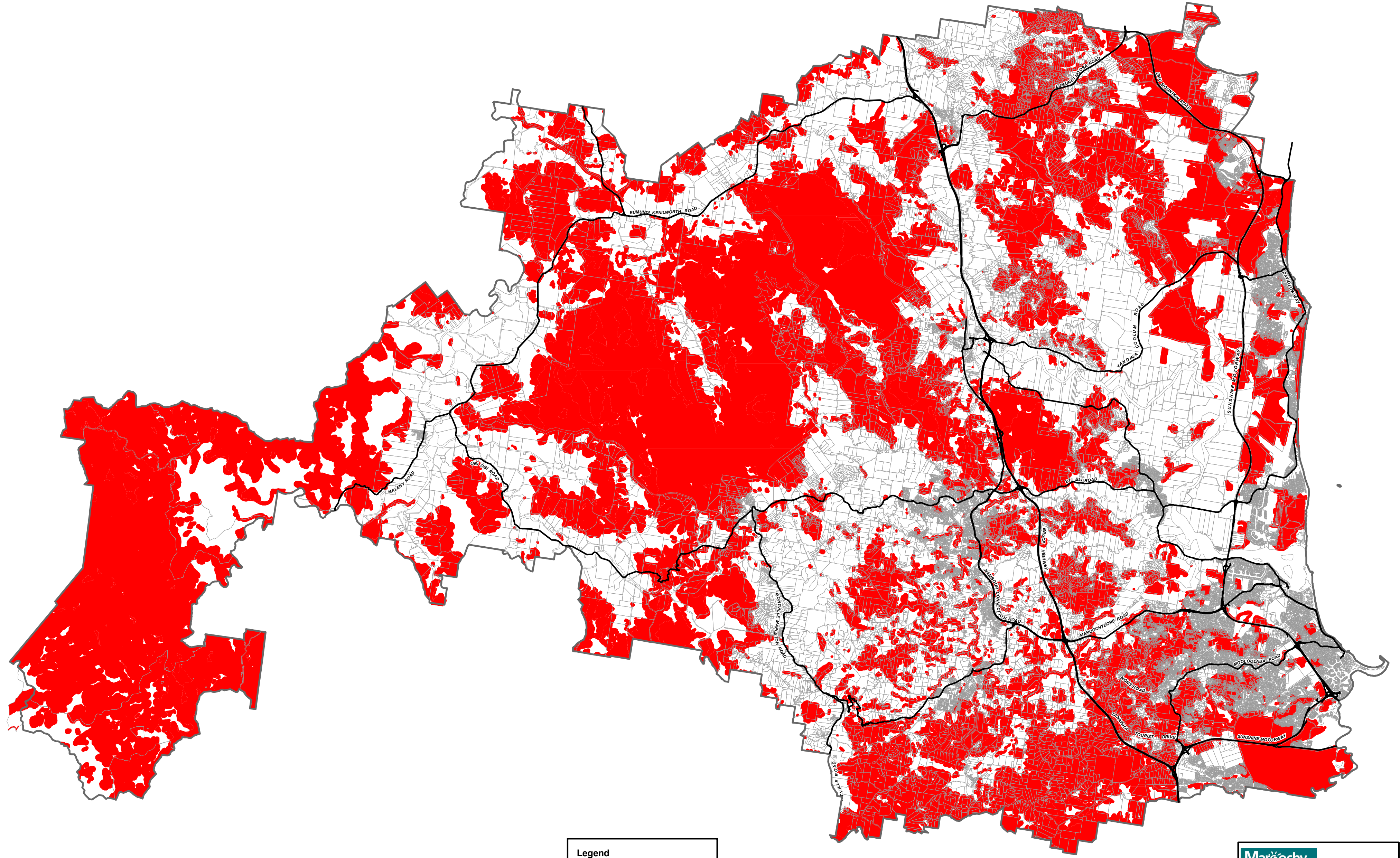
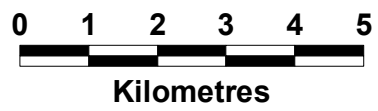


Amended 5th November, 2010



Disclaimer
While every care is taken to ensure the accuracy of this product, neither the Sunshine Coast Regional Council nor the State of Queensland makes any representations or warranties about its accuracy, reliability, completeness or suitability for any particular purpose and disclaims all responsibility and all liability (including without limitation, liability in negligence) for all expenses, losses, damages (including indirect or consequential damage) and costs that may occur as a result of the product being inaccurate or incomplete in any way or for any reason.
Crown & Council Copyright Reserved.



Note: For all Cadastre on all mapping, please refer to the CD Version or Development Assessment, Information Services Support Officers located in Nambour or Maroochydore.

Legend

- Designated Bushfire Prone Areas
- Land Parcels
- State Roads

Advisory Notes
Building Work Applications: The Building Code of Australia (BCA) and AS3959 - 2009 'Construction of buildings in bushfire-prone areas' contain provisions applying to building in bushfire prone areas. Lands identified on this map are "Designated Bushfire Prone Areas" for the purposes of the Building Regulation 2006 (Section 12) and the BCA.
Where a site is indicated as being in a Designated Bushfire Prone Area on this map but has undergone legal clearing of vegetation, there is a need to re-determine whether the site remains in the Designated Bushfire Prone Area. In instances where a development site is located:
a) within 100m of an existing vegetation community in a High Hazard area on Regulatory Map 1.7 Special Management Area Regulatory Map 1.7, the site remains in the Designated Bushfire Prone Area.
b) within 50m of an existing vegetation community in a Medium Hazard area on Regulatory Map 1.7 Special Management Area Regulatory Map 1.7, the site remains in the Designated Bushfire Prone Area.
c) outside the distance thresholds outlined in a) or b) above - the site shall no longer be regarded as being within a Designated Bushfire Prone Area.



**Designated Bushfire
Prone Areas for
Building Work
'Figure 2.1.6'**

Path: \\scrcp03.scr.internal.Repository\Workflow\Projects\M5584_Maroochy_Planning_Scheme\R3988_Bushfire_Hazard_Areas_SMA\1\20090605\Map\Designated_Bushfire_Prone_Areas_for_Building_Work.mxd