

**Mooloolaba Transport Corridor
Upgrade (MTCU) Project**
Stage 1b – Walan Street, Mooloolaba

Project number: H9272

Construction update
December 2020 and January 2021

We thank the community, particularly residents and businesses in Walan Street and surrounding streets for your patience and cooperation during Stage 1B construction.

With three lanes of Walan Street open to traffic and the remaining lane well underway, we are working toward a March-April 2021 opening of the four lanes, including the new signalised intersection at Walan Street-Naroo Court.

Until that time, please find below information about December and January project activity.

Changes to traffic conditions**From Monday 21 December 2020 (3pm)*****Three lanes open on Walan Street***

One southbound lane and two northbound lanes are now operating.

Direct access from Walan Street to 16 and 18 Walan Street

Direct vehicle access to businesses and residences at 16 and 18 Walan Street will be available via a left in, left out only arrangement.

The temporary Smith Street access will be closed.

From Tuesday 22 December 2020 - Smith Street left turn open into Walan Street

Ahead of the opening of the new ParknGo Mooloolaba Central car park (on Wednesday 23 December) the left turn movement will be opened.

Please see the map on **page 2** for details of these traffic conditions.

January 2021 construction focus

Works in January will include:

- continued construction of the remaining two traffic lanes on Walan Street
- continued construction of the new Walan Street-Naroo Court signalised intersection including kerbing, verge works and traffic signal commissioning
- continued footpath works on the northern side of Walan Street
- landscaping across the whole project area.

Next stages - 2 and 3 (Brisbane Road)

Another Community Update newsletter will be issued in January 2021. It will include information about the next stages of the project, Stages 2 and 3 which will now be constructed simultaneously in 2021-2022. Stage 2 includes the new four lane Mayes Canal Bridge.

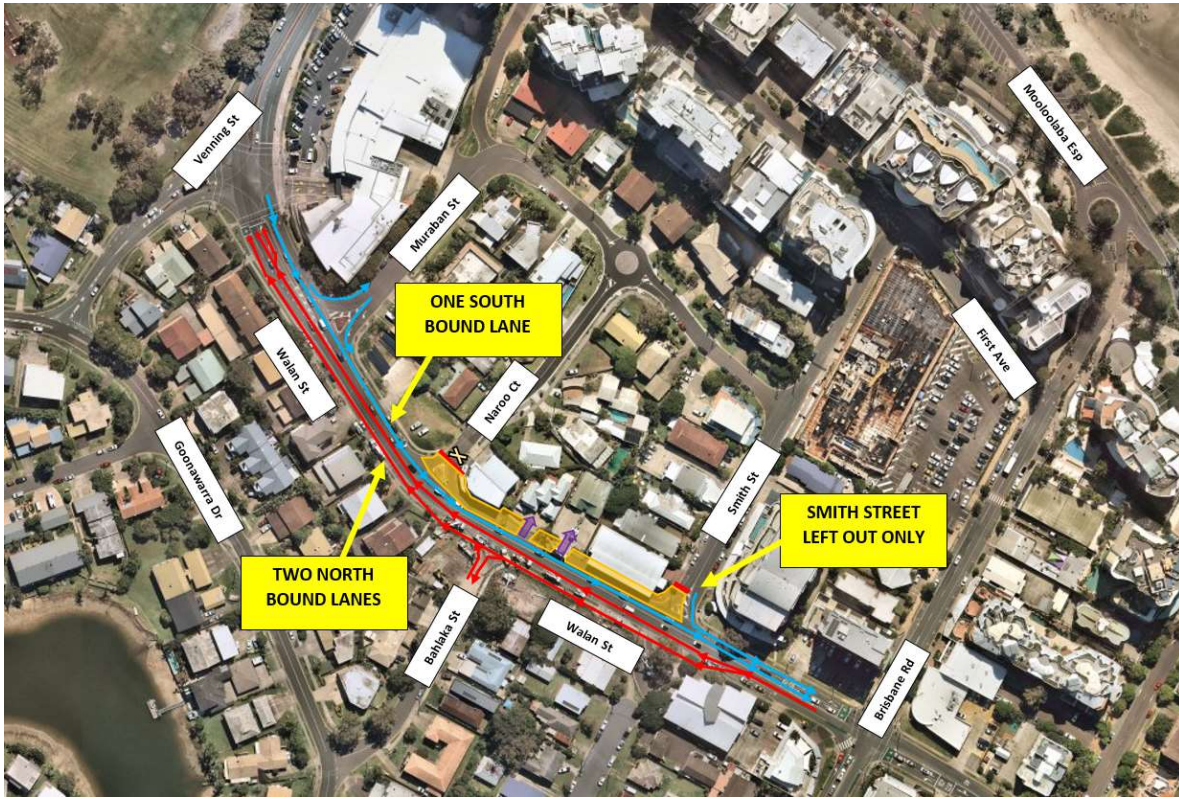
More information about these stages can be found on the project website.

Christmas construction break

Stage 1b construction will cease from Thursday 24 December 2020 to Sunday 3 January 2021 inclusive.

Works will recommence on Monday 4 January 2021.

We wish you a Merry Christmas and a safe and happy festive season.



Traffic movements Tuesday 22 December 2020 to Monday 4 January 2021 inclusive.