



Project number: H3747

Brisbane Road Upgrade


Stages 2 and 3


Mooloolaba Transport Corridor Upgrade

 Traffic switch to two new lanes of Mayes Canal Bridge and demolition of the old bridge

 Friday 8 July - Traffic lane switch

Monday 11 July to late July - Old bridge demolition
(estimated dates only, weather dependent)

 Brisbane Road, Mooloolaba

 Vehicle and marine traffic control operating as required

Construction overview

With construction of two of the four new lanes of the new Mayes Canal Bridge almost complete, vehicles will shortly be 'switched' onto the two new bridge lanes.

Constructing the bridge one half at a time means that vehicles can continue to use Brisbane Road while the old Mayes Canal Bridge is demolished.

Following the switch the remaining two lanes and shared pedestrian and cycle paths on both sides of the new bridge will then be built.

For safety reasons during demolition and the remainder of the bridge's construction, pedestrian and cyclist traffic will be diverted onto the existing Mooloolaba Walk and Ride Bridge, some 130 metres to the east. Directional signage will be in place.

The new 26.4 metre wide, four lane bridge will provide improved vehicle access and be a gateway into the heart of Mooloolaba.

It will feature shared pedestrian and cycle paths on both sides and have the same clearance as the current bridge so as not to impose any new navigational restrictions on marine vessels (access will remain the same).

Landscaping treatments will complement the bridge and connect it to the riverbank, parkland and existing pedestrian pathways.

The new four lane bridge is expected to operational by late 2022, weather permitting.

These works are benefitting from a \$12 million investment from the Australian Government through the \$4 billion Urban Congestion Fund.

Access will remain available to residences and businesses during construction.

Temporary changes to vehicle and marine traffic conditions

Please see the map on page 3 to see the location of the two new bridge lanes.

Motor vehicles: No changes to motor vehicle travel are expected due to the lane switch. Two lanes of traffic will continue to operate (one lane each way) until the new four lane bridge is open.

During the bridge demolition works, a crane will be positioned on the northern side of the canal, adjacent to the Bowls Club. It will work from the southern to the northern end of the bridge for a period of approximately two weeks.

All information contained in this communication is accurate at the time of distribution however works and dates are subject to change due to circumstances outside of Sunshine Coast Council's control.

State Government regulations dictate the movements of oversize vehicles on the Queensland road network. For safety reasons and to minimise impacts to motorists, the cranes must be delivered to site in the early morning.

Intermittent noise can be expected, including vehicle reversing beepers and whistles used by construction workers to communicate with the crane driver in accordance with workplace health and safety regulations.

Large machinery will be in operation including excavators, trucks and cranes. Concrete saws and jackhammers will be in operation as required.

Intermittent medium-high level noise is to be expected at times. All demolition works will take place in daytime hours (6am – 6pm). No weekend works are expected at this time.

For safety reasons intermittent vehicle traffic control will be in operation along Brisbane Road including during the crane's delivery and removal, and when sections of the bridge are lifted across the road.

Marine vessels: For safety reasons there will be some temporary changes to marine craft traffic conditions.

Access will remain to/from Mayes Canal however exclusion zones will be in place at times.

Mariners are asked to exercise extra care and allow additional time for your boating journey.

Environmental considerations

Being mindful of Mayes Canal's location and environmental sensitivities including parkland and marine areas, all construction is being performed under the relevant environmental conditions and an Environmental Management Plan.

Maritime Safety Queensland will post 'Notice to Mariner' information about these works.

What to expect during these works?

Traffic lane switch

Road barriers will be positioned over the old lanes and traffic redirected to the new lanes. Please drive with caution while motorists become used to the new road lanes.

Demolition of the old Mayes Canal Bridge. Construction of the remaining new bridge.

Demolition works have been timed to take place outside of the June-July school holiday period.

To minimise impacts to the community the bridge will be demolished in a multiple-step process. No explosives will be used, rather the bridge will be cut into smaller sections and then removed by crane and disposed off-site. Dust mitigation measures will be in operation with dust monitors in place.

The steps for demolition include:

- Cutting and removal of the asphalt (bitumen), kerbs, handrail and footpath
- Saw cutting the bridge's steel work
- Crane lifting the cut bridge deck from the bridge's headstocks (the beams positioned between the bridge's piers)
- Saw cutting the headstocks into sections in preparation for removal
- Divers setting up underwater saw cutting equipment
- Remote control saw cutting of the bridge's piers from the canal floor
- Crane removal of the dismantled bridge elements. This will include construction workers working from a barge in the canal.

Once the old bridge is removed, construction of the remaining two new bridge lanes and pedestrian will commence.

We thank nearby residents and businesses for your ongoing patience and understanding during these complex demolition and construction works.

Weather forecast - July

With extensive wet weather forecast over the next few weeks, the dates specified in this notification are indicative only.

The project team will continue to identify opportunities to progress all construction activity as quickly as possible, and as the weather permits.

Register for project updates and/or contact the project team

To register for construction updates, email your details to mtcu@sunshinecoast.qld.gov.au

For further information, you can contact the project team on 1800 531 597 (during office hours, Monday to Friday 8.30am – 5pm) or email mtcu@sunshinecoast.qld.gov.au

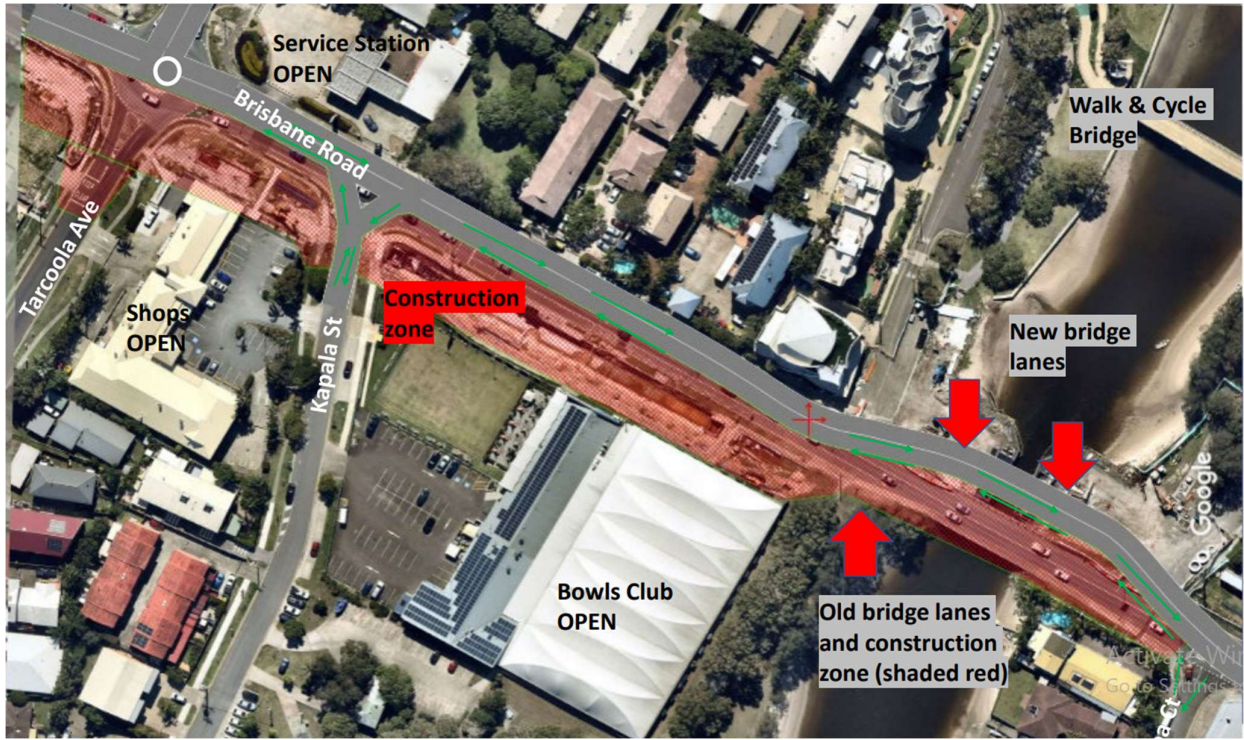


Figure 1. Traffic switched onto two new lanes of new Mayes Canal Bridge
 Estimated Friday 8 July 2022 (weather dependent).



Figure 2. Artist impression of new, four lane Mayes Canal Bridge featuring timber decking and a shared pedestrian and cycle path on both sides of the bridge.