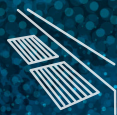


Sunshine Coast Council
Stormwater Management Strategy
SUMMARY

AUGUST 2021





As part of Sunshine Coast Council's commitment to effective stormwater management, the **Stormwater Management Strategy** has been prepared to address the numerous challenges and opportunities now being faced. The strategy will help provide a clear path towards achieving Council's vision '*Australia's most sustainable region – Healthy. Smart. Creative.*'

Stormwater management is the term used for planning, setting policy, implementing actions and providing and managing stormwater infrastructure. Stormwater management aims to protect people and property from unacceptable flooding risks, minimise adverse impacts to the natural and built environment, and ensure that stormwater is valued as a resource.

Stormwater assets are typically hidden from view or intermittently used. Consequently, their role and importance in maintaining a safe, healthy and well-functioning urban environment can be underappreciated.

With a changing climate and increased development, effective stormwater management is critical to ensuring that Sunshine Coast Council can achieve its vision.

The actions and achievements of previous councils, in partnership with the

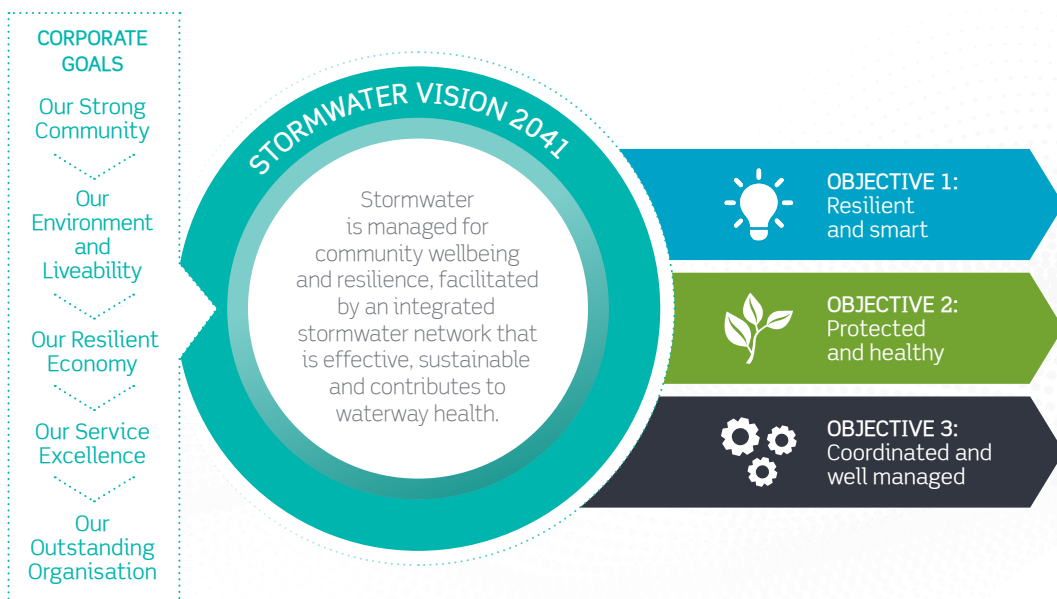
community, have established a healthy and liveable region, creating a strong platform to respond proactively to change and the challenges that we now face.

The strategy seeks to identify the key issues for Council relating to stormwater management and establish a series of objectives, strategic directions and actions to address these issues.

The strategy builds upon the work done in the Environment and Liveability Strategy and other Council documents to provide a consistent, strategic direction for stormwater management on the Sunshine Coast.

The strategy also aims to raise awareness of the importance of effective stormwater management, so that the community, the development industry and other levels of government can all play their part.

Stormwater management vision for 2041



By having clearly defined objectives and implementation pathways in place, the vision for stormwater management will be able to be realised. An overview of the strategic framework is provided below. Further detail is provided in the Stormwater Management Strategy Part A.

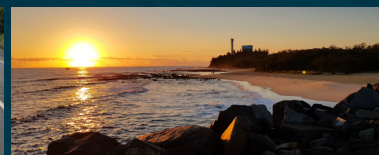
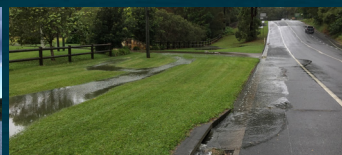
Strategic Framework

Our Strong Community	Our Environment and Liveability	Our Resilient Economy	Our Service Excellence	Our Outstanding Organisation
Stormwater Vision 2041				
Stormwater is managed for community wellbeing and resilience, facilitated by an integrated stormwater network that is effective, sustainable and contributes to waterway health.				

Objective 1: Resilient and smart Wellbeing and resilience are enhanced by increased stormwater awareness, clever planning and good design	Objective 2: Protected and healthy Stormwater management protects the natural and built environment and supports healthy communities and ecosystems	Objective 3: Coordinated and well managed Stormwater assets are effective and responsive to a changing environment
---	---	--

Strategic directions					
1.1	Understanding stormwater flood risk and stormwater network performance	2.1	Effective stormwater treatment and water quality management	3.1	Coordinated management and maintenance of stormwater assets
1.2	Strategic identification and designation of land and assets	2.2	An informed and engaged community and industry	3.2	Sustainable levels and standards of service that are fit for purpose.
1.3	Sustainable, smart and functional design	2.3	Compliance and accountability	3.3	Improved asset management and knowledge of stormwater assets
				3.4	Prioritised and coordinated delivery of works
Policy positions		Policy positions		Policy positions	
Detailed actions		Detailed actions		Detailed actions	





Implementation of this strategy seeks to provide the Sunshine Coast community with:

- healthy waterways and beaches
- a more liveable, safe and green urban environment
- an increased understanding of stormwater flood risk
- increased engagement and appreciation of the impact we have on the environment
- strategic and targeted investment that will maximise community benefit
- optimised and coordinated infrastructure and service delivery, reducing costs and inconvenience to the community
- reduced reliance on potable water
- increased resilience to the effects of climate change
- the ability to accommodate increased growth in the region.

 **Sunshine Coast** COUNCIL | Our region.
Healthy. Smart. Creative.

www.sunshinecoast.qld.gov.au
mail@sunshinecoast.qld.gov.au
 T 07 5475 7272 F 07 5475 7277
 Locked Bag 72 Sunshine Coast Mail Centre Qld 4560

 @sunshinecoastcouncil  @councilscc  @sunshinecoastcouncil