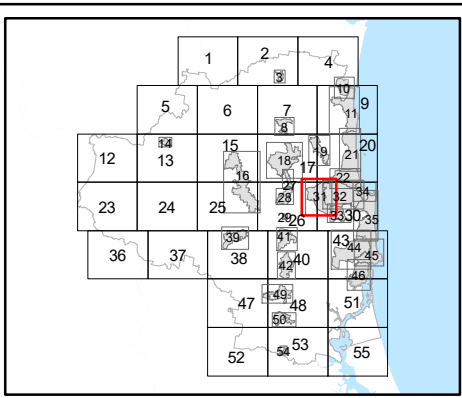


- Community Facilities Zone Annotations**
1. Air services
 2. Cemetery
 3. Child care centre
 4. Community use
 5. Crematorium
 6. Educational establishment
 7. Emergency services
 8. Extractive industry
 9. Hospital
 10. Multiple dwelling
 11. Outdoor sport and recreation
 12. Place of worship
 13. Relocatable home park
 14. Renewable energy facility
 15. Residential care facility/Retirement facility
 16. Rooming accommodation
 17. Short-term accommodation
 18. Substation
 19. Tourist park
 20. Utility installation (Local utility)
 21. Utility installation (Major utility - refuse)
 22. Utility installation (Major utility - sewerage treatment)
 23. Utility installation (Major utility - water supply)



Zone Map

- | | | |
|--|---|--|
| <p>Residential Zones Category</p> <ul style="list-style-type: none"> Low Density Residential Zone Precinct LDR1 (Protected Housing Area) Medium Density Residential Zone High Density Residential Zone Tourist Accommodation Zone <p>Centre Zones Category</p> <ul style="list-style-type: none"> Principal Centre Zone Major Centre Zone District Centre Zone Local Centre Zone <p>Recreation Zones Category</p> <ul style="list-style-type: none"> Sport and Recreation Zone Open Space Zone | <p>Environmental Zones Category</p> <ul style="list-style-type: none"> Environmental Management and Conservation Zone <p>Industry Zones Category</p> <ul style="list-style-type: none"> Low Impact Industry Zone Medium Impact Industry Zone High Impact Industry Zone Waterfront and Marine Industry Zone <p>Other Zones Category</p> <ul style="list-style-type: none"> Community Facilities Zone Emerging Community Zone Limited Development (Landscape Residential) Zone Rural Zone Precinct RUR1 (Meridan Plains Extractive Resource Area) Rural Residential Zone Specialised Centre Zone | <ul style="list-style-type: none"> Tourism Zone Precinct TOU3 (Big Pineapple) <p>Other Elements</p> <ul style="list-style-type: none"> Urban Growth Management Boundary Rural Residential Growth Management Boundary Local Plan Area Boundary Declared Master Planned Area (see Part 10 - Other Plans) Land within Development Control Plan 1 - Kawana Waters which is the subject of the Kawana Waters Development Agreement (see Section 1.2 - Planning Scheme Components) Priority Development Area (subject to the <i>Economic Development Act 2012</i>) Dedicated Public Transport Corridor (CAMCOS) DCDB 10 October 2019 © State Government |
|--|---|--|

Note - Where a zone map provides an annotation for land included in the Community Facilities Zone, the annotation refers to the corresponding use set out in Table SC2.1.1 (Community facilities zone annotations).

Disclaimer
While every care is taken to ensure the accuracy of this product, neither the Sunshine Coast Regional Council nor the State of Queensland makes any representations or warranties about its accuracy, reliability, completeness or suitability for any particular purpose and disclaims all responsibility and all liability (including without limitation, liability in negligence) for all expenses, losses, damages (including indirect or consequential damage) and costs that may occur as a result of the product being inaccurate or incomplete in any way or for any reason.

© Crown and Council Copyright Reserved 2019
Geocentric Datum of Australia 1994 (GDA94)

Approx Scale @ A3 1:24,565

Zone Map ZM 31