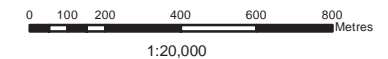




- LEGEND**
- Local Plan Area Boundary
 - Waterway^{Note 1}
 - Primary Active Street Frontage
 - Primary Streetscape Treatment Area
 - Local Ecological Linkage
 - Greenspace^{Note 1}
 - Community Activity/Facility^{Note 1}
 - Landscape Buffer
 - Character Vegetation
 - Gateway/Entry Point
 - Significant View
 - Heritage Place^{Note 2}
 - Through Block Pedestrian/Cycle Linkage
 - Dedicated Public Transit Corridor
 - Transit Hub
 - Indicative Road Linkage/Access Point
 - Proposed Rail Corridor Upgrade

Note 1: For contextual purposes only.
 Note 2: Refer to Heritage and Character Overlay maps in Schedule 2 (Mapping).



Disclaimer
 While every care is taken to ensure the accuracy of this product, neither the Sunshine Coast Regional Council nor the State of Queensland makes any representations or warranties about its accuracy, reliability, completeness or suitability for any particular purpose and disclaims all responsibility and all liability (including without limitation, liability in negligence) for all expenses, losses, damages (including indirect or consequential damage) and costs that may occur as a result of the product being inaccurate or incomplete in any way or for any reason.

© Crown and Council Copyright Reserved 2014
 Geocentric Datum of Australia 1994 (GDA94)

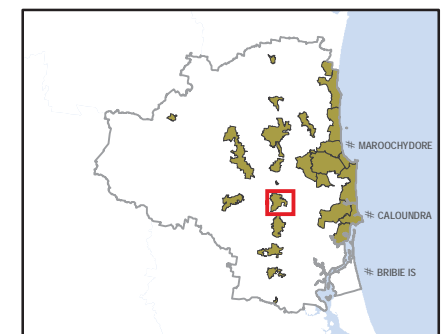
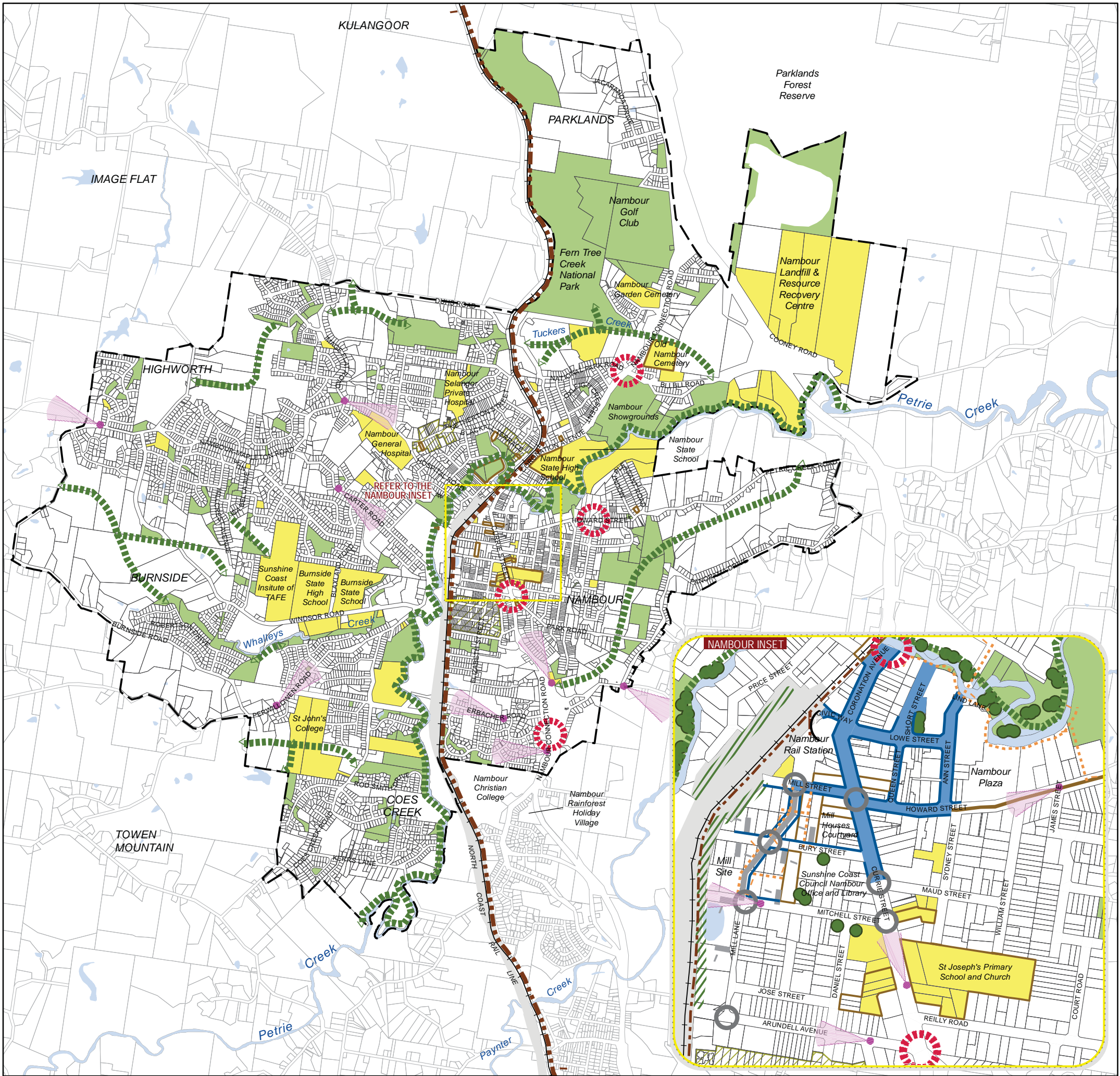


Figure 7.2.21A
 (Mooloolah Local Plan Elements)



LEGEND

Local Plan Area Boundary	Through Block Pedestrian/Cycle Linkage
Waterway ^{Note 1}	Dedicated Public Transport Corridor
Primary Active Street Frontage	Transit Hub
Primary Streetscape Treatment Area	Indicative Road Linkage/Access Point
Local Ecological Linkage	Intersection Upgrade
Greenspace ^{Note 1}	Proposed Rail Corridor Upgrade
Community Activity/Facility ^{Note 1}	
Character Vegetation	
Landscape Buffer	
Gateway/Entry Point	
Heritage Place ^{Note 2}	
Neighbourhood Character Area ^{Note 2}	
Significant View	

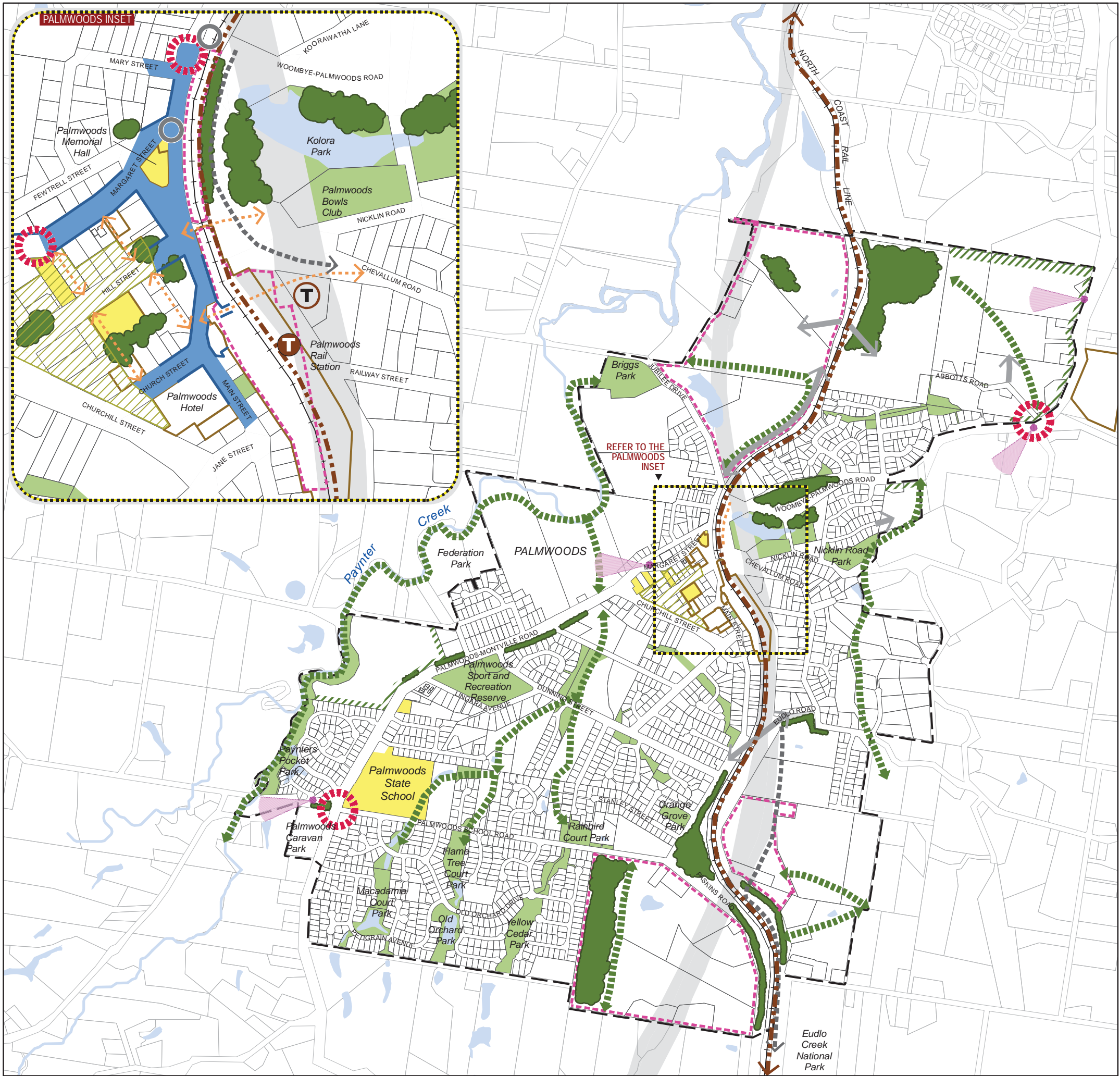
0 200 400 800 1,200 1,600 Metres
1:28,686

Disclaimer
While every care is taken to ensure the accuracy of this product, neither the Sunshine Coast Regional Council nor the State of Queensland makes any representations or warranties about its accuracy, reliability, completeness or suitability for any particular purpose and disclaims all responsibility and all liability (including without limitation, liability in negligence) for all expenses, losses, damages (including indirect or consequential damage) and costs that may occur as a result of the product being inaccurate or incomplete in any way or for any reason.

© Crown and Council Copyright Reserved 2014
Geocentric Datum of Australia 1994 (GDA94)

Note 1: For contextual purposes only.
Note 2: Refer to Heritage and Character Overlay maps in Schedule 2 (Mapping)

Figure 7.2.22A (Nambour Local Plan Elements)



LEGEND

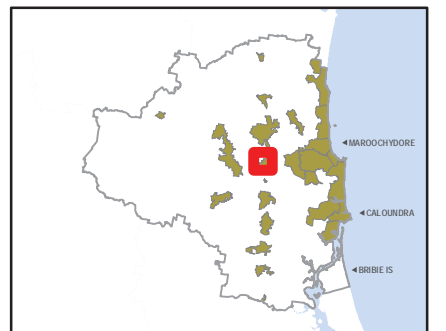
- Local Plan Area Boundary
- Waterway^{Note 1}
- Primary Active Street Frontage
- Primary Streetscape Treatment Area
- Local Ecological Linkage
- Greenspace^{Note 1}
- Community Activity/Facility^{Note 1}
- Character Vegetation
- Gateway/Entry Point
- Landscape Buffer
- Heritage Place^{Note 2}
- Neighbourhood Character Area^{Note 2}
- Significant View
- Through Block Pedestrian/Cycle Linkage
- Dedicated Public Transport Corridor
- Transit Hub
- Future Transit Hub
- Indicative Road Linkage/Access Point
- Intersection Upgrade
- Proposed Rail Corridor Upgrade
- Proposed road following Rail Corridor Upgrade
- Land for Potential Urban Purposes following Rail Corridor Upgrade (subject to master planning)

0 95 190 380 570 760 Metres

1:14,613

Disclaimer
 While every care is taken to ensure the accuracy of this product, neither the Sunshine Coast Regional Council nor the State of Queensland makes any representations or warranties about its accuracy, reliability, completeness or suitability for any particular purpose and disclaims all responsibility and all liability (including without limitation, liability in negligence) for all expenses, losses, damages (including indirect or consequential damage) and costs that may occur as a result of the product being inaccurate or incomplete in any way or for any reason.

© Crown and Council Copyright Reserved 2016
 Geocentric Datum of Australia 1994 (GDA94)



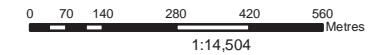
Note 1: For contextual purposes only.
 Note 2: Refer to Heritage and Character Overlay maps in Schedule 2 (Mapping).

Figure 7.2.23A (Palmwoods Local Plan Elements)



- LEGEND**
- Local Plan Area Boundary
 - Waterway^{Note 1}
 - Local Ecological Linkage
 - Greenspace^{Note 1}
 - Community Activity/Facility^{Note 1}
 - Landscape Buffer
 - Gateway/Entry Point
 - Indicative Road Linkage/Access Point

Note 1: For contextual purposes only.



Disclaimer
While every care is taken to ensure the accuracy of this product, neither the Sunshine Coast Regional Council nor the State of Queensland makes any representations or warranties about its accuracy, reliability, completeness or suitability for any particular purpose and disclaims all responsibility and all liability (including without limitation, liability in negligence) for all expenses, losses, damages (including indirect or consequential damage) and costs that may occur as a result of the product being inaccurate or incomplete in any way or for any reason.

© Crown and Council Copyright Reserved 2014
Geocentric Datum of Australia 1994 (GDA94)

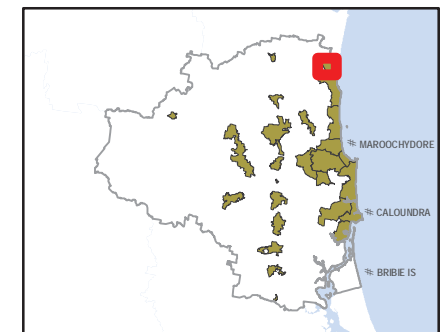
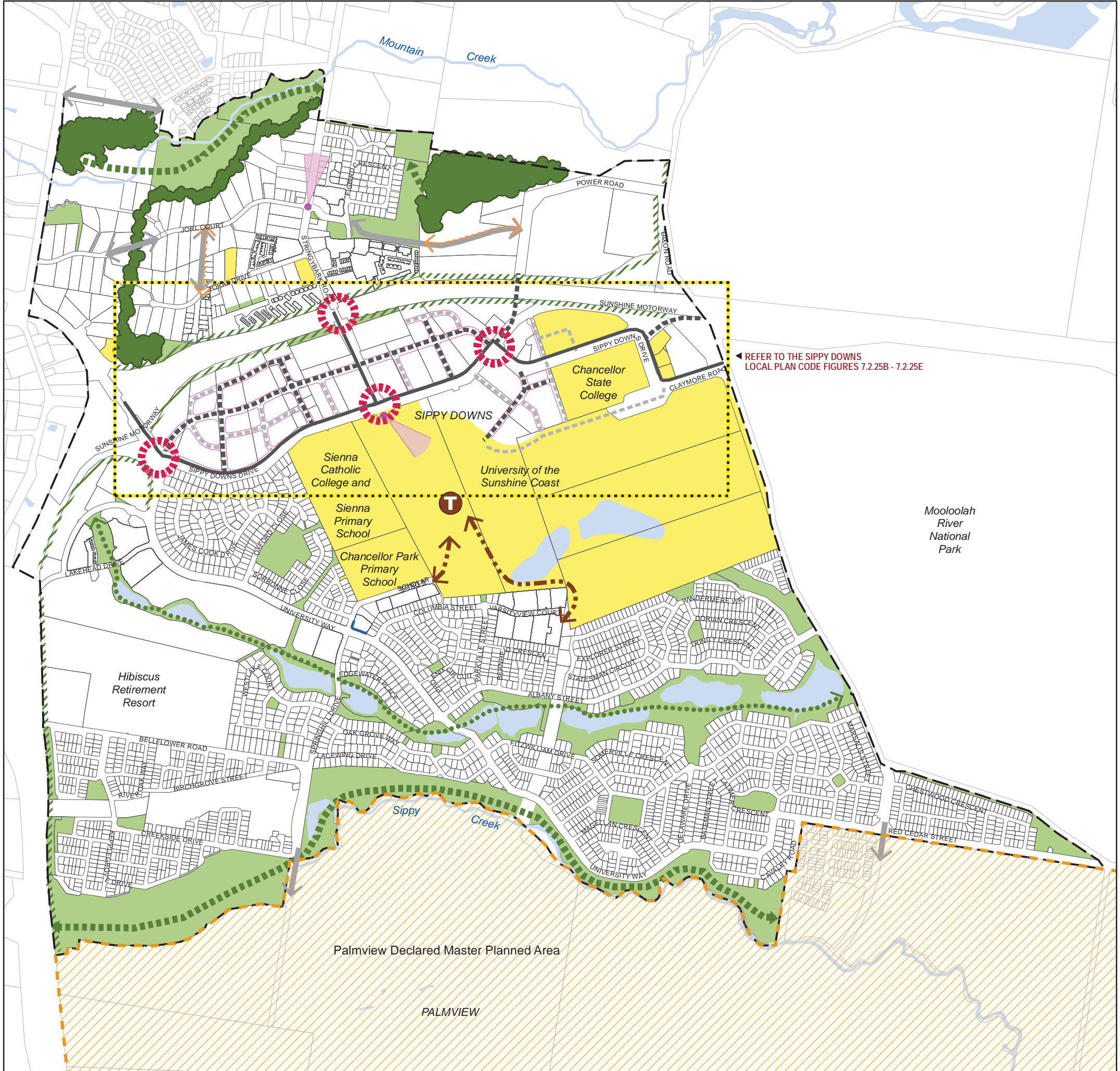


Figure 7.2.24A (Peregian South Local Plan Elements)



REFER TO THE SIPPY DOWNS LOCAL PLAN CODE FIGURES 7.2.25B - 7.2.25E

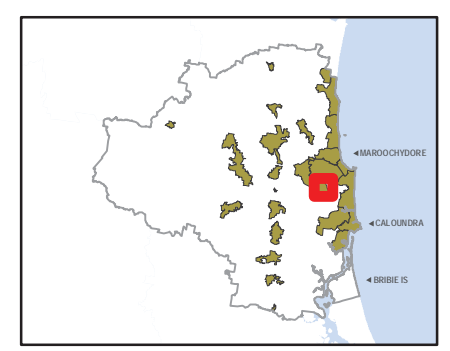
LEGEND

- Local Plan Area Boundary
- Waterway^{Note 1}
- Primary Active Street Frontage
- Local Ecological Linkage
- Greenspace^{Note 1}
- Community Activity/Facility^{Note 1}
- Greenspace Link
- Character Vegetation
- Landscape Buffer
- Gateway/Entry Point
- Significant View
- Through Block Pedestrian/Cycle Linkage
- Dedicated Public Transport Corridor
- Transit Hub
- Indicative Road Linkage/Access Point
- Existing Principal Street (Sippy Downs Town Centre)
- Future Principal Street (Sippy Downs Town Centre)
- Future Local Access Street (Sippy Downs Town Centre)
- Declared Master Planned Area (see Part 10 - Other Plans)



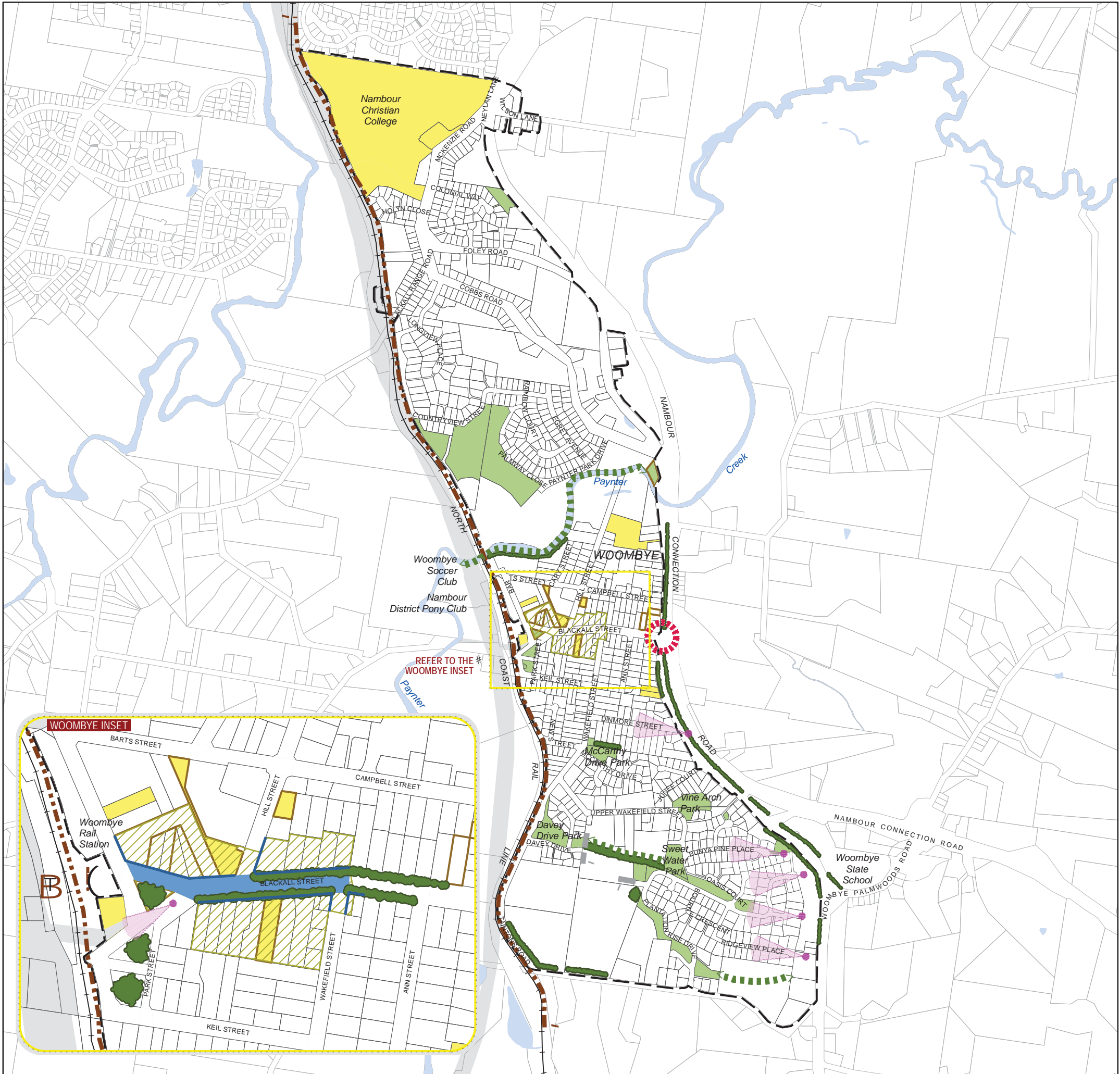
Disclaimer
 While every care is taken to ensure the accuracy of this product, neither the Sunshine Coast Regional Council nor the State of Queensland makes any representations or warranties about its accuracy, reliability, completeness or suitability for any particular purpose and disclaims all responsibility and all liability (including without limitation, liability in negligence) for all expenses, losses, damages (including indirect or consequential damage) and costs that may occur as a result of the product being inaccurate or incomplete in any way or for any reason.

© Crown and Council Copyright Reserved 2016
 Geocentric Datum of Australia 1994 (GDA94)



Note 1: For contextual purposes only.

Figure 7.2.25A (Sippy Downs Local Plan Elements)



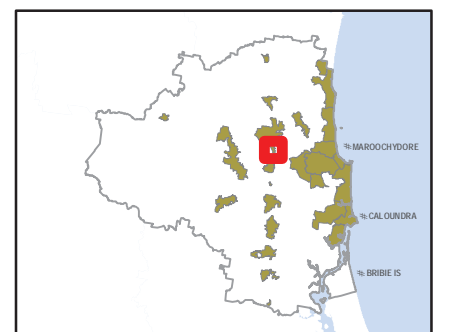
LEGEND

- Local Plan Area Boundary
- Waterway^{Note 1}
- Primary Active Street Frontage
- Primary Streetscape Treatment Area
- Local Ecological Linkage
- Greenspace^{Note 1}
- Community Activity/Facility^{Note 1}
- Character Vegetation
- Gateway/Entry Point
- Significant View
- Heritage Place^{Note 2}
- Neighbourhood Character Area^{Note 2}
- Dedicated Public Transport Corridor
- Transit Hub
- Future Transit Hub
- Indicative Road Linkage/Access Point
- Proposed Rail Corridor Upgrade



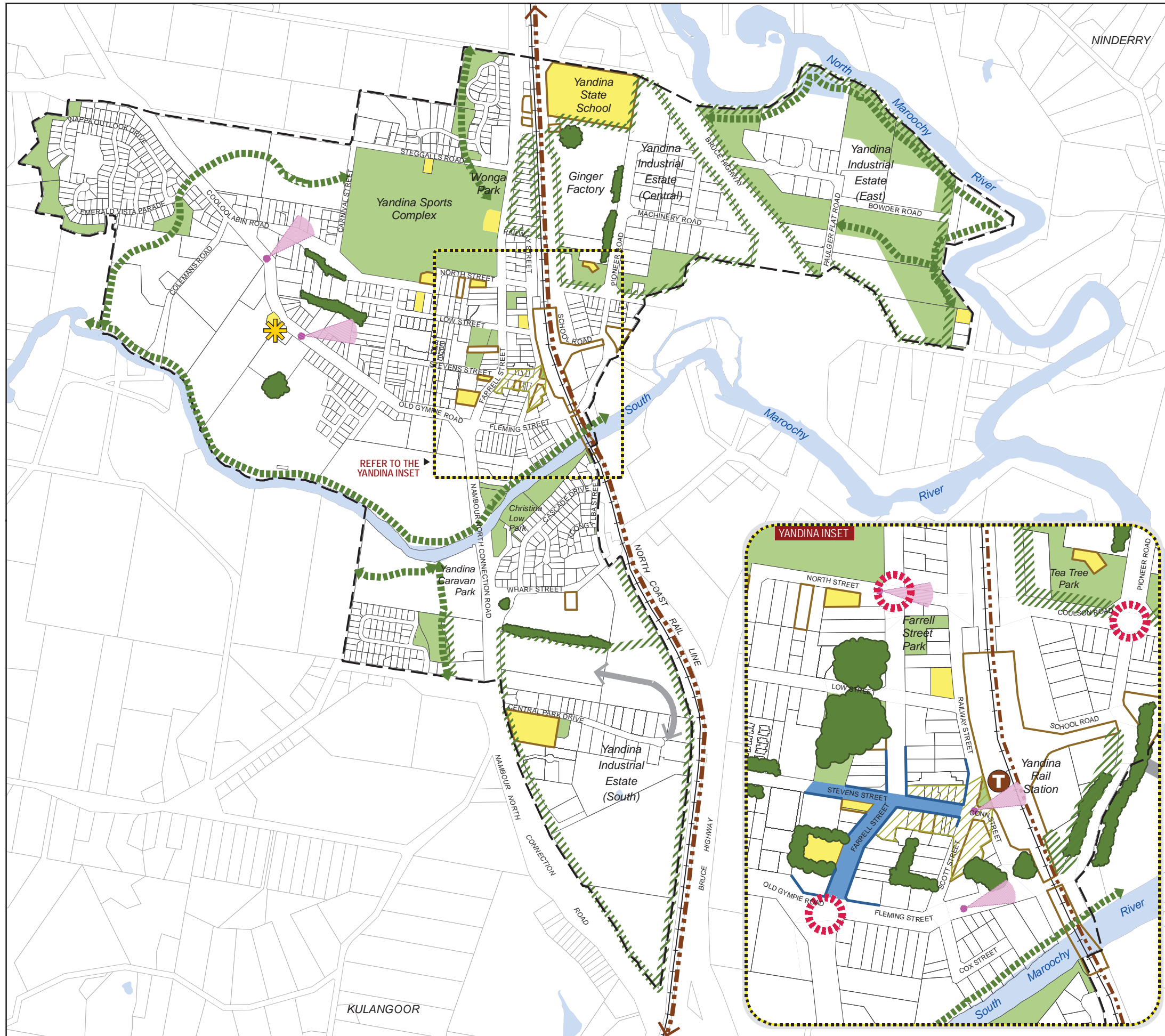
Disclaimer
While every care is taken to ensure the accuracy of this product, neither the Sunshine Coast Regional Council nor the State of Queensland makes any representations or warranties about its accuracy, reliability, completeness or suitability for any particular purpose and disclaims all responsibility and all liability (including without limitation, liability in negligence) for all expenses, losses, damages (including indirect or consequential damage) and costs that may occur as a result of the product being inaccurate or incomplete in any way or for any reason.

© Crown and Council Copyright Reserved 2014
Geocentric Datum of Australia 1994 (GDA94)



Note 1: For contextual purposes only.
Note 2: Refer to Heritage and Character Overlay maps in Schedule 2 (Mapping).

Figure 7.2.26A (Woombye Local Plan Elements)



- LEGEND**
- Local Plan Area Boundary
 - Waterway^{Note 1}
 - Primary Active Street Frontage
 - Primary Streetscape Treatment Area
 - Local Ecological Linkage
 - Greenspace^{Note 1}
 - Community Activity/Facility^{Note 1}
 - Character Vegetation
 - Landscape Buffer
 - Gateway/Entry Point
 - Mountain or Hill
 - Significant View
 - Heritage Place^{Note 2}
 - Neighbourhood Character Area^{Note 2}
 - Dedicated Public Transport Corridor
 - Indicative Road Linkage/Access Point
 - Transit Hub

Note 1: For contextual purposes only.
 Note 2: Refer to Heritage and Character Overlay maps in Schedule 2 (Mapping).



Disclaimer
 While every care is taken to ensure the accuracy of this product, neither the Sunshine Coast Regional Council nor the State of Queensland makes any representations or warranties about its accuracy, reliability, completeness or suitability for any particular purpose and disclaims all responsibility and all liability (including without limitation, liability in negligence) for all expenses, losses, damages (including indirect or consequential damage) and costs that may occur as a result of the product being inaccurate or incomplete in any way or for any reason.

© Crown and Council Copyright Reserved 2017
 Geocentric Datum of Australia 1994 (GDA94)

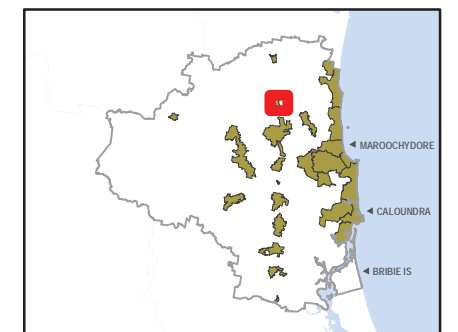


Figure 7.2.27A
 (Yandina Local Plan Elements)