



Your Transport Levy
Your transport future

Sunshine Coast Council Transport Levy Annual Report 2018 - 2019



Artist Impression

Table of contents

www.sunshinecoast.qld.gov.au
T 07 5475 7272 F 07 5475 7277
Locked Bag 72 Sunshine Coast Mail Centre Qld 4560

© Sunshine Coast Regional Council 2009-current.
Sunshine Coast Council™ is a registered trademark
of Sunshine Coast Regional Council.

Acknowledgements

Council wishes to thank all contributors and stakeholders involved in the development of this document.

Disclaimer

Information contained in this document is based on available information at the time of writing. All figures and diagrams are indicative only and should be referred to as such. While the Sunshine Coast Regional Council has exercised reasonable care in preparing this document it does not warrant or represent that it is accurate or complete. Council or its officers accept no responsibility for any loss occasioned to any person acting or refraining from acting in reliance upon any material contained in this document.

Message from The Mayor: Your Transport Levy in action	4
Message from Cr Baberowski: Transport Portfolio Councillor	5
Where did your Transport Levy go in 2018 - 2019?	6
Transport Levy 2018 - 2019 Program snapshot	7
Service improvements	7
User benefits	8
Infrastructure assets	9
Research, planning and investigations	10
Transport Futures Fund	10



Message from the Mayor Your Transport Levy in action

Moving around our region efficiently and sustainably as our population continues to grow is essential if we are to maintain the liveability and productivity of our Sunshine Coast.

Our council's vision is for the Sunshine Coast to be Australia's most sustainable region – healthy, smart, creative. A key part of achieving this vision is connecting our residents from where they live to where they work, go to school, participate in recreational activities and where they access services.

Council recognises that public transport on the Sunshine Coast is the responsibility of the Queensland Government, but there is also an important role that council can play on behalf of our community to advocate for much needed investment in the public transport network, provide a range of measures that support our residents most in need and help shape behavioural change when it comes to using the existing public transport options. Council's Transport Levy is an important element in enabling this work to occur.

For example, our Flexilink transport services provide affordable, reliable and accessible transport services to our hinterland residents. Our Council Link services help

hundreds of passengers every week to stay connected with their communities. The Levy is also helping to support the Kenilworth Community Transport Service.

Council has also delivered a strategic business case for a new mass transit system to cater for the public transport needs of our growing region.

A high quality integrated public transport system, providing frequent and reliable services, is key to reducing car dependency; connecting our community with where they live, work and access services; and to supporting urban consolidation and reducing the potential for urban sprawl. The Transport Levy plays a crucial role in enabling council to undertake this important planning and assessment work to enable this project to be well placed for investment by other tiers of government.

This report outlines what council has been able to deliver through your annual contribution to the Transport Levy. Everyone on the Sunshine Coast can be assured the Transport Levy is helping to improve our connectivity today and achieve better transport outcomes for our healthy, smart creative region in the future.

Mayor Mark Jamieson



Message from Cr Baberowski Transport Portfolio Councillor



In December 2018, council adopted the *Sunshine Coast Integrated Transport Strategy*, which outlines a transport system for the Coast that enhances connectivity, economic viability and maintains the region's liveability and environment.

While council is not responsible for some aspects of the transport system, such as public transport, it is willing to strengthen partnerships or be a catalyst for improvement and innovation where it can benefit the community and contribute towards enhancing the sustainability of the region.

One way council does this is through initiatives such as the Transport Levy. Funds from the annual Transport Levy, contributed to by all ratepayers, helps council to protect future transport options, strategic

transport outcomes and trial public transport services such as the Kenilworth Community Transport Service.

In 2018 - 2019, the Transport Levy increased from \$42 to \$43, raising \$6 million, allowing council to contribute to bus stop upgrades, community transport services and travel behaviour change programs.

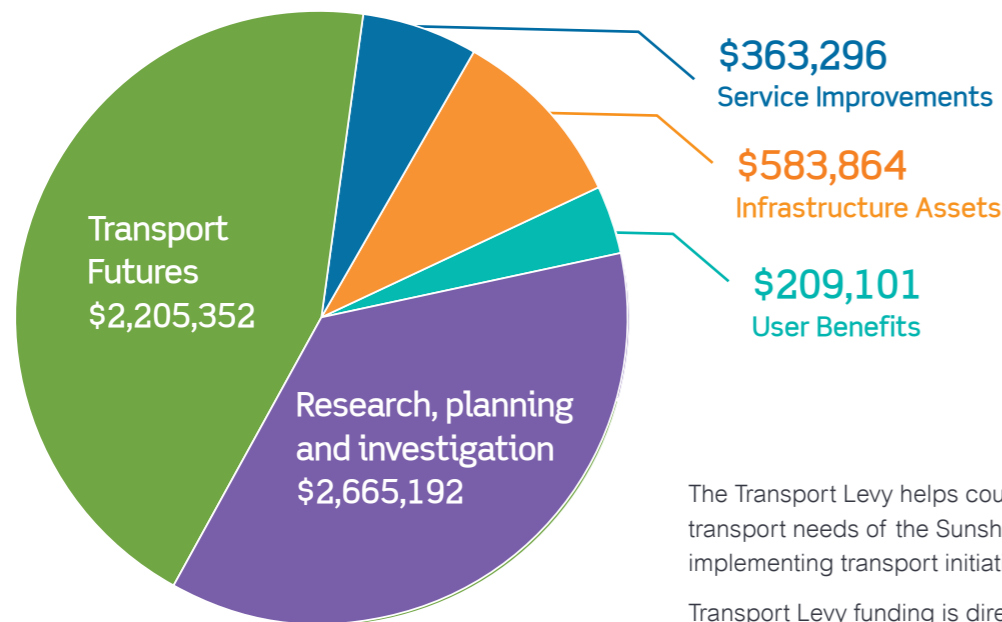
The 2018 - 2019 Sunshine Coast Council Transport Levy Annual Report gives you a snapshot of the combined efforts of council's work and achievements to ensure the community gets the best integrated transport network possible.

**Cr Baberowski
Transport Portfolio Councillor**

Where did your Transport Levy go in 2018 - 2019?

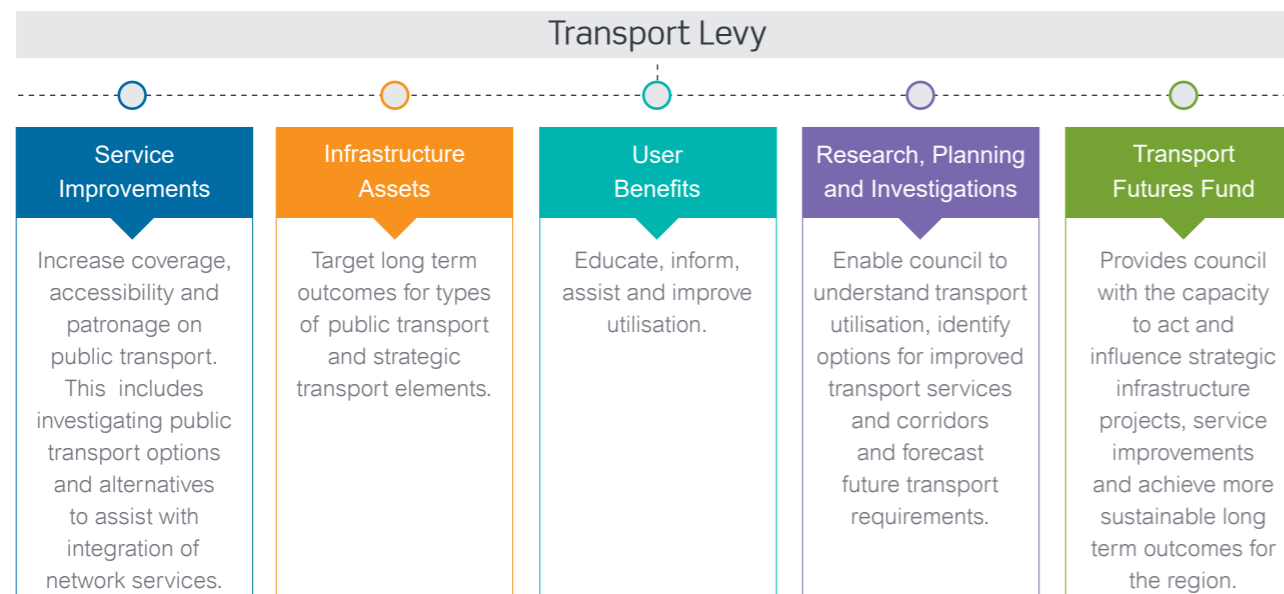
Transport Levy in 2018 - 2019:
\$43 per annum
per rateable property

Total revenue 2018 - 2019:
\$6,026,805



The Transport Levy helps council to plan for the future transport needs of the Sunshine Coast and with implementing transport initiatives across our region.

Transport Levy funding is directed to five key areas that aim to improve connectivity across the Sunshine Coast for today, and into the future.



Transport Levy 2018 - 2019 Program snapshot

The Integrated Transport Strategy (ITS) adopted by council in December 2018, outlines our vision to address the region's transport needs and the important role played by the Transport Levy to ensure council meets its strategic transport responsibilities.

Service improvements

In 2018 - 2019, council continued to advocate to the State Government to increase transport investment on the Coast. This investment is essential to ensure public transport is a viable travel choice for residents and visitors. Council may choose to utilise Transport Levy funds to bring forward service improvements to TransLink services across the Sunshine Coast. The Transport Levy also enables council to continue to fund transport trials in community areas not currently serviced.

Kenilworth Community Transport Service trial

Launched in June 2019, the Kenilworth Community Transport Service trial provides services to Kenilworth residents living within 6.5 km radius of the Kenilworth Post Office.

The community-run service offers pre-booked return services to Nambour, Maleny, Eumundi and Yandina, during daylight hours, Monday to Friday. Supported by the Transport Levy, the transport service provides affordable, reliable and accessible community transport options to Kenilworth residents who have limited transport options.

Council Link

Fully funded by the Transport Levy, Council Link provides an affordable, door-to-door transport service for people aged 60 and over and for people with disabilities or mobility impairment. The service plays an important role by improving community connectedness and reducing social isolation.

In April 2019, the program reached 100,000 passengers milestone.



Council Link

Supported by Sunshine Coast Council

Council Link transported an average of **285** passengers each week

17,014 passenger trips on Council Link were undertaken

59 suburbs across the Sunshine Coast were serviced by Council Link in 2018 - 2019

345,000km were travelled by Council Link





Flexilink trial services

In 2018 - 2019 the Transport Levy delivered two trial Flexilink transport services to the Sunshine Coast Hinterland region; the Peachester to Beerwah Flexilink service and the Conondale to Maleny (via Witta) Flexilink service. Flexilink services are pre-booked scheduled transport services that operate in areas of the Sunshine Coast with limited access to public transport. Each Flexilink service offers six one way trips that can be booked daily, Monday to Saturday. The Flexilink services operate on the basis that they only run if a booking has been made.

In 2018 - 2019 the Flexilink services delivered over 4,000 passenger trips and travelled over 34,500km's across the two services.

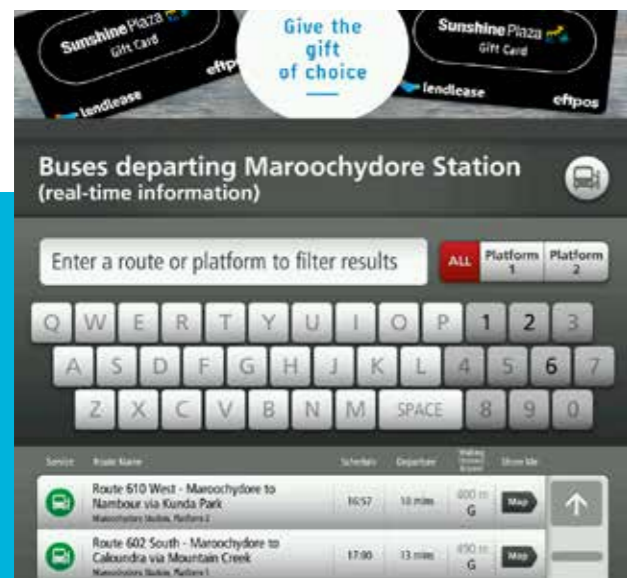
- Peachester to Beerwah Flexilink Service - 232 total passenger trips and over 1,600km's travelled
- Conondale to Maleny Flexilink Service - 3,793 total passenger trips and over 33,000km travelled.

User benefits

Real-Time information

Sunshine Plaza

In November 2018, getting around the Sunshine Coast from Sunshine Plaza at Maroochydore became



easier with the introduction of real-time bus departure information. Shoppers can now use the digital directory kiosks located throughout the centre to check when the next bus is expected to leave Maroochydore Station.

Real-time data gives shoppers the opportunity to make on-the-spot decisions according to actual travel time, not just scheduled times listed on the journey planner or timetable. There are currently nine digital directory kiosks throughout Sunshine Plaza.

Visitor Information Centres

In October 2018, iPads were installed at five Visitor Information Centres to provide TransLink's real-time public transport information. Visitor Information Centre volunteers are now able to provide accurate predictions for service departures within the next hour, as well as useful travel options.

Ridescore

RideScore is an incentive-based program designed to increase active travel to and from school. Following a successful trial at Caloundra State School, council in partnership with We Ride Australia (Australian Cycling Promotion Foundation Limited) are developing a tailored RideScore program, including development of a digital platform to encourage school families to choose active modes of transport to travel to school.

The RideScore digital platform utilises personal sensors that send real-time notifications to parents on the arrival and departure of students riding and scooting to and from school.

Program snapshot

Infrastructure assets

The Transport Levy continued to contribute funding to a number of bus stop infrastructure upgrades. In 2018 - 2019, \$583,864 was utilised to upgrade 19 bus stops across the Sunshine Coast. These upgrades will greatly benefit all users, ensuring council continues to deliver bus stop infrastructure that is compliant with the Disability Discrimination Act 1992. The bus stop upgrades that have been undertaken in 2018 - 2019 result in approximately 92% of council's bus stops

achieving compliance with the Disability Discrimination Act 1992.

The upgrade works include:

- concrete bus stop pads and signage
- installation of tactile ground surface indicators
- upgraded footpath connections to bus stop locations
- new bus shelters at 12 bus stop locations.



Mooloolaba River Esplanade



David Low Way



Carter Road Nambour



Nambour Connection Road

1,246 passengers have accessed the **real-time bus information** at Sunshine Plaza between November 2018 and June 2019



Research, planning and investigations

In 2018 - 2019 council has continued to develop strategic and local area computer models to assist with transport planning and forecasting across the Sunshine Coast. This modelling has been undertaken in conjunction with the Department of Transport and Main Roads and is partially funded by the Transport Levy.

The modelling enables council to analyse the existing and future performance of the transport network. The outputs from these models are used to assist council in:

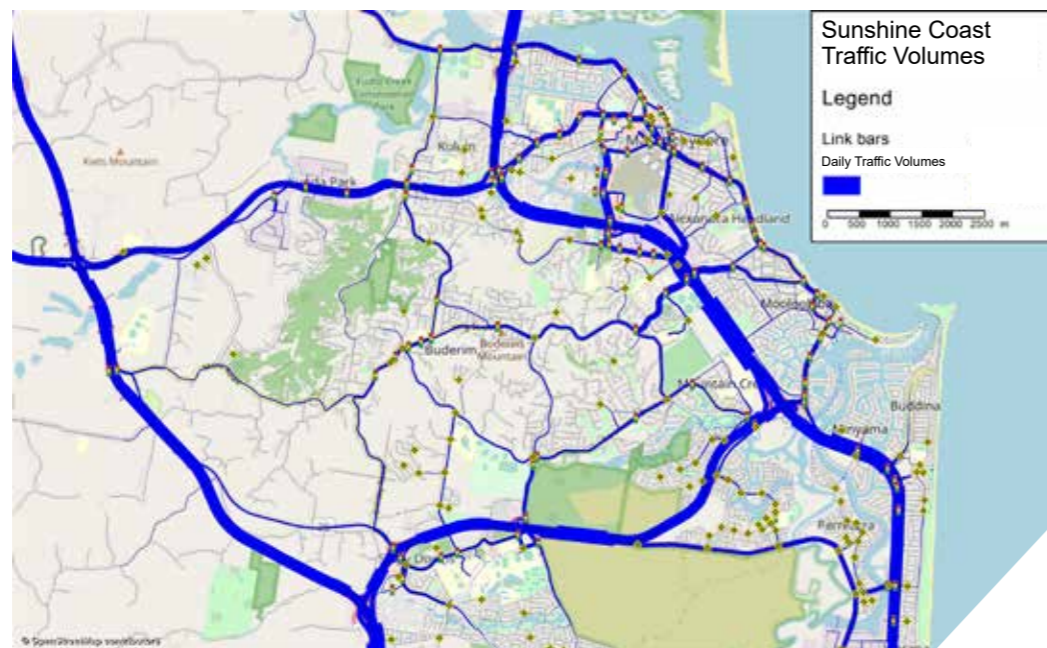
- determining the potential benefits and impacts of future transport projects, refer to map below
- determining the required sequencing of projects
- informing council as to where future investment in the transport network will be required.

In 2018 - 2019, with funding from the Transport Levy, council continued to progress the Sunshine Coast Mass Transit Project. The culmination of work undertaken in 2018 - 2019 was endorsement from council for the strategic business case for a new mass transit system to cater for the growing Sunshine Coast region. The Sunshine Coast Mass Transit Project presents a critical opportunity to achieve council's vision – to be Australia's most sustainable region – healthy, smart, creative – by transforming the urban landscape of the Sunshine Coast and delivering a range of integrated economic, land use and transportation benefits for the region.

Council's work on the Sunshine Coast Mass Transit Project has been ongoing since 2012 and has included:

- A Line in the Sand
- Shaping Our Future
- Urban Transformation Directions Paper
- Community consultation on route options.

The endorsement of the Sunshine Coast Mass Transit Strategic Business Case represents the completion of the first stage of a government-established



review framework, through which Queensland and Commonwealth government funding may be accessed.

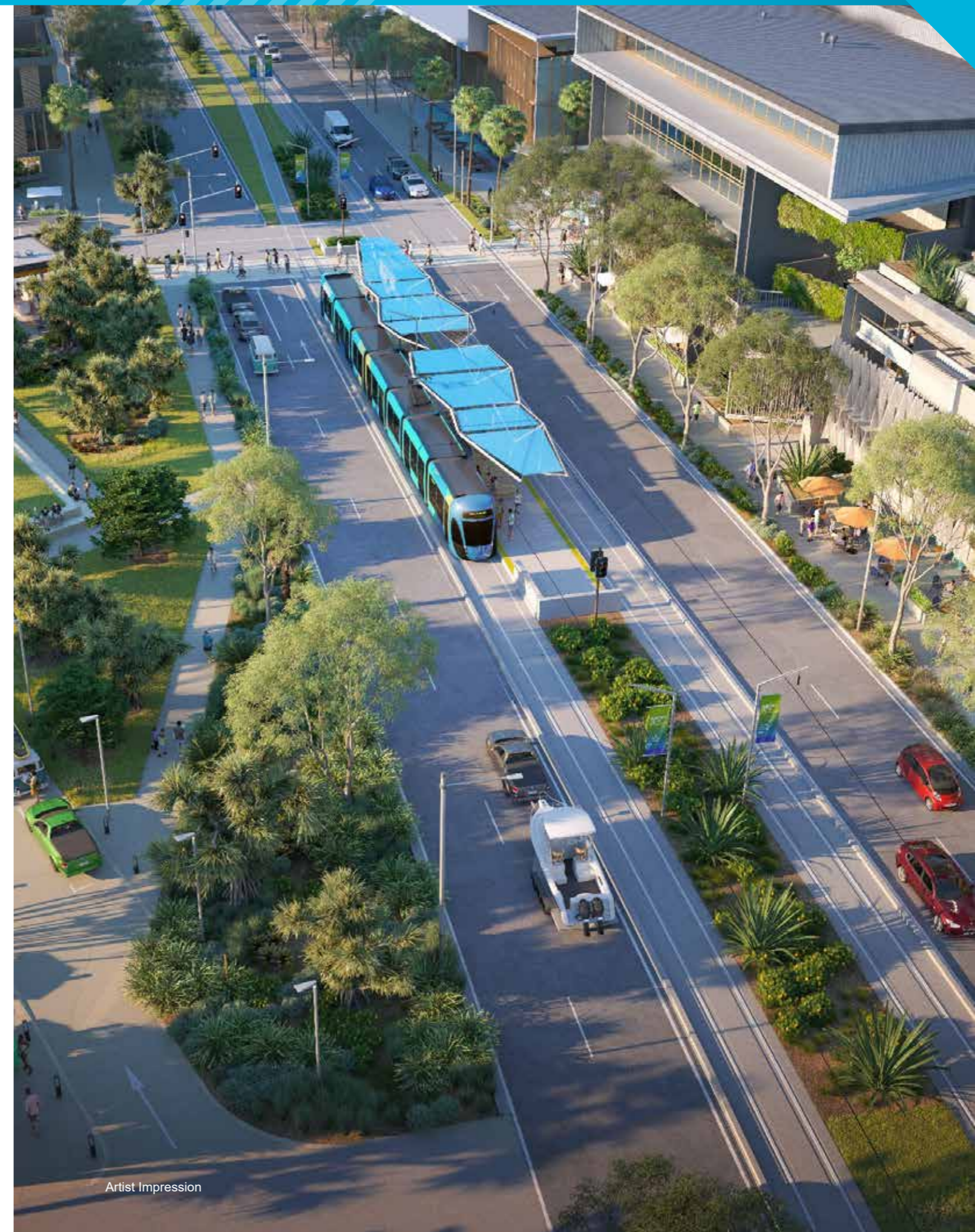
The second stage will be to finalise the preliminary business case, which is already underway and will be brought to council early next year for endorsement. The final stage will be a detailed business case which will be prepared by the end of 2021 – in partnership with the Queensland Government.

While the public transport network is the responsibility of the State Government, council has continued to forge ahead with the planning and assessment of potential solutions to ensure that the Sunshine Coast community can gain access to the public transport services the region needs.

Transport Futures Fund

The Transport Futures Fund is a critical element of the Transport Levy structure as it enables council to fund strategic transport outcomes for the Sunshine Coast. This funding, which would not be available otherwise, is likely to include the provision of projects and initiatives aimed at achieving major, long term, multi-modal infrastructure outcomes and strategies. The Transport Futures Fund is not intended to replace the funding of projects that can realistically be delivered through the timely and effective use of existing capital programs, revenues and mechanisms for effective land use planning.

In 2018 - 2019 a significant portion of the Transport Levy funding (over \$2.2Million) was transferred to the Transport Futures Fund.





*Maroochydore
station*



Queensland
Government



Sunshine Coast
COUNCIL

www.sunshinecoast.qld.gov.au

mail@sunshinecoast.qld.gov.au

T 07 5475 7272 F 07 5475 7277

Locked Bag 72 Sunshine Coast Mail Centre Qld 4560