



Map 11 - A



Map 11 - B



Map 11 - C



Key Plan

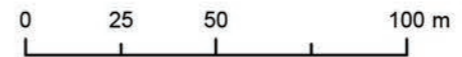
Coastal Pathway Category

- Completed
- 2.4 - 2.9m, Low Priority
- Less than 2.4m, High Priority
- Less than 2.4m, Medium Priority
- Less than 2.4m, Low Priority
- Temporary Link

Missing Links Priority

- High
- Low
- Long Term Planning Option
- Property Boundaries
- Geotagged Photos

Indicative pathway alignment - final location will be subject to detailed site investigation





Map 12 - A



Map 12 - B



Map 12 - C



Map 12 - D

Indicative pathway alignment - subject to detailed site investigation, sections of path may require suspension above dunes and to maintain grades.



Key Plan

Coastal Pathway Category

- Completed
- 2.4 - 2.9m, Low Priority
- Less than 2.4m, High Priority
- Less than 2.4m, Medium Priority
- Less than 2.4m, Low Priority

Missing Links Priority

- High
- Low
- Long Term Planning Option

- Property Boundaries
- Geotagged Photos



Map 13 - A



Map 13 - B

Existing narrow bridge to be upgraded

Indicative pathway alignment - subject to further investigation.



Key Plan

Coastal Pathway Category

- Completed
- 2.4 - 2.9m, Low Priority
- Less than 2.4m, High Priority
- Less than 2.4m, Medium Priority
- Less than 2.4m, Low Priority
- Temporary Link

Missing Links Priority

- High
- Low
- Long Term Planning Option
- Property Boundaries
- Geotagged Photos



Map 14 - A



Map 14 - B

Indicative pathway alignment -
subject to further investigation






Key Plan

Coastal Pathway Category

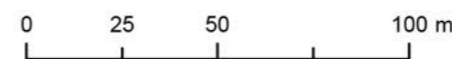
-  Completed
-  2.4 - 2.9m, Low Priority
-  Less than 2.4m, High Priority
-  Less than 2.4m, Medium Priority
-  Less than 2.4m, Low Priority

Missing Links Priority

-  High
-  Low
-  Long Term Planning Option

 Property Boundaries

 Geotagged Photos





Map 15 - A



Map 15 - B








Map 15 - C

Indicative pathway alignment - subject to future investigation



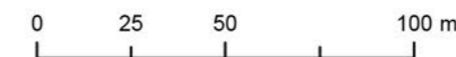
Key Plan

Coastal Pathway Category

-  Completed
-  2.4 - 2.9m, Low Priority
-  Less than 2.4m, High Priority
-  Less than 2.4m, Medium Priority
-  Less than 2.4m, Low Priority
-  Temporary Link

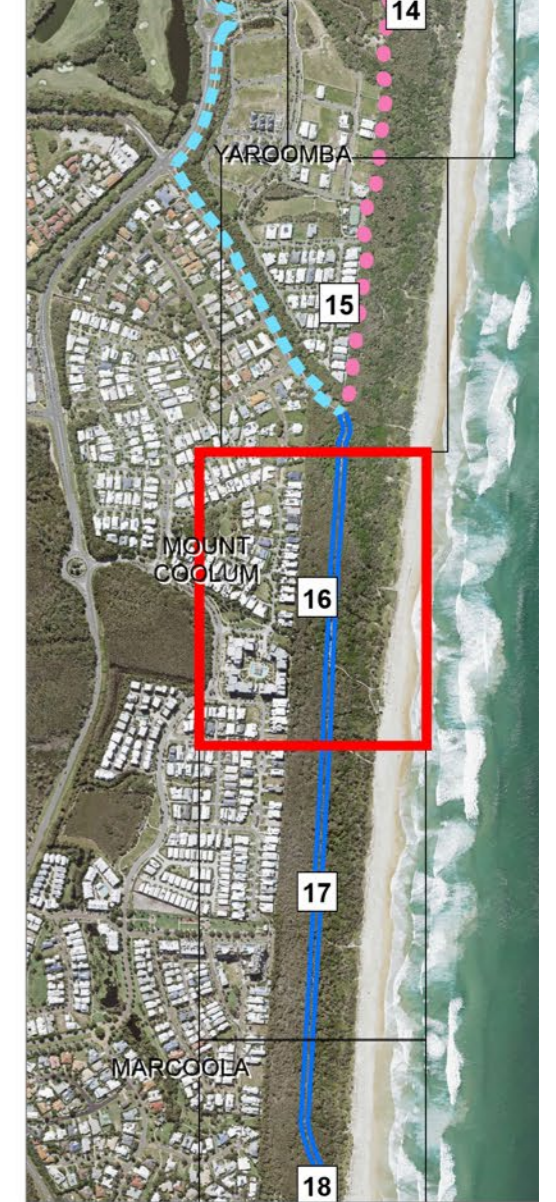
Missing Links Priority

-  High
-  Low
-  Long Term Planning Option
-  Property Boundaries
-  Geotagged Photos





Map 16 - A



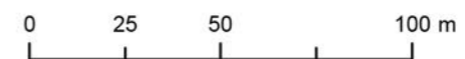
Key Plan

Coastal Pathway Category

- Completed
- 2.4 - 2.9m, Low Priority
- Less than 2.4m, High Priority
- Less than 2.4m, Medium Priority
- Less than 2.4m, Low Priority
- Temporary Link

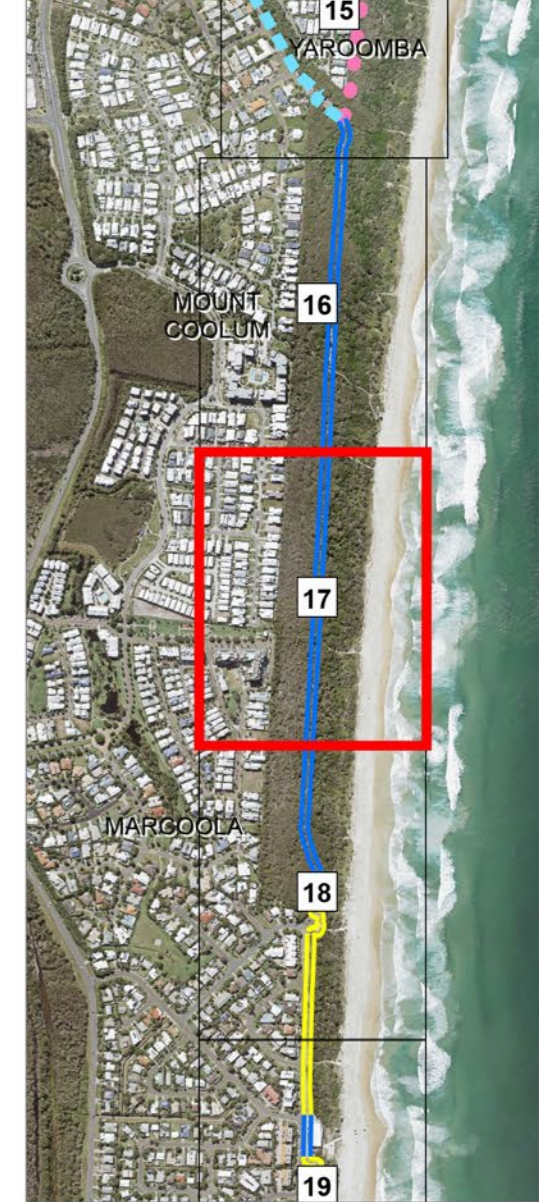
Missing Links Priority

- High
- Low
- Long Term Planning Option
- Property Boundaries
- Geotagged Photos





Map 17 - A



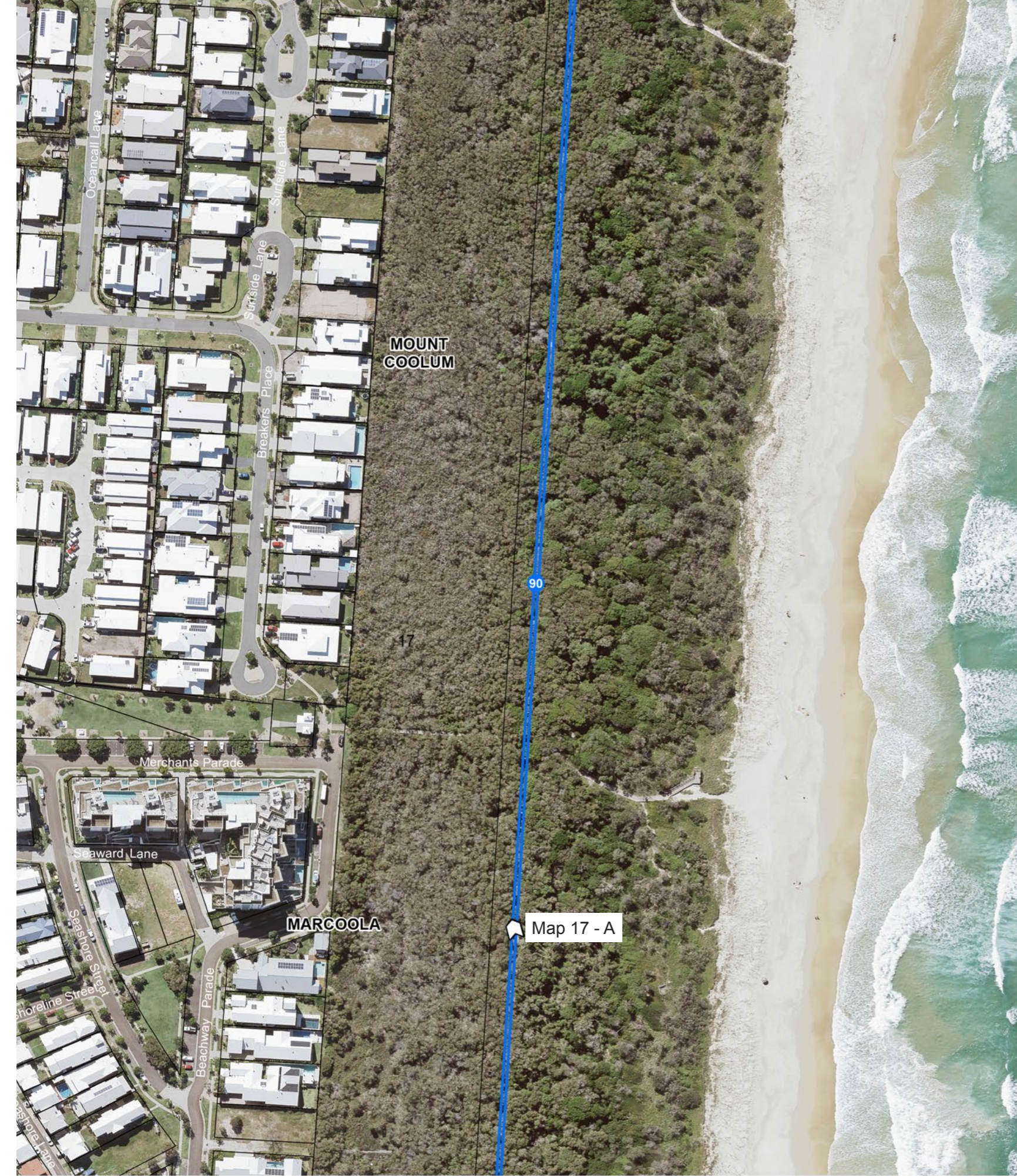
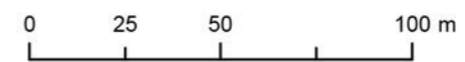
Key Plan

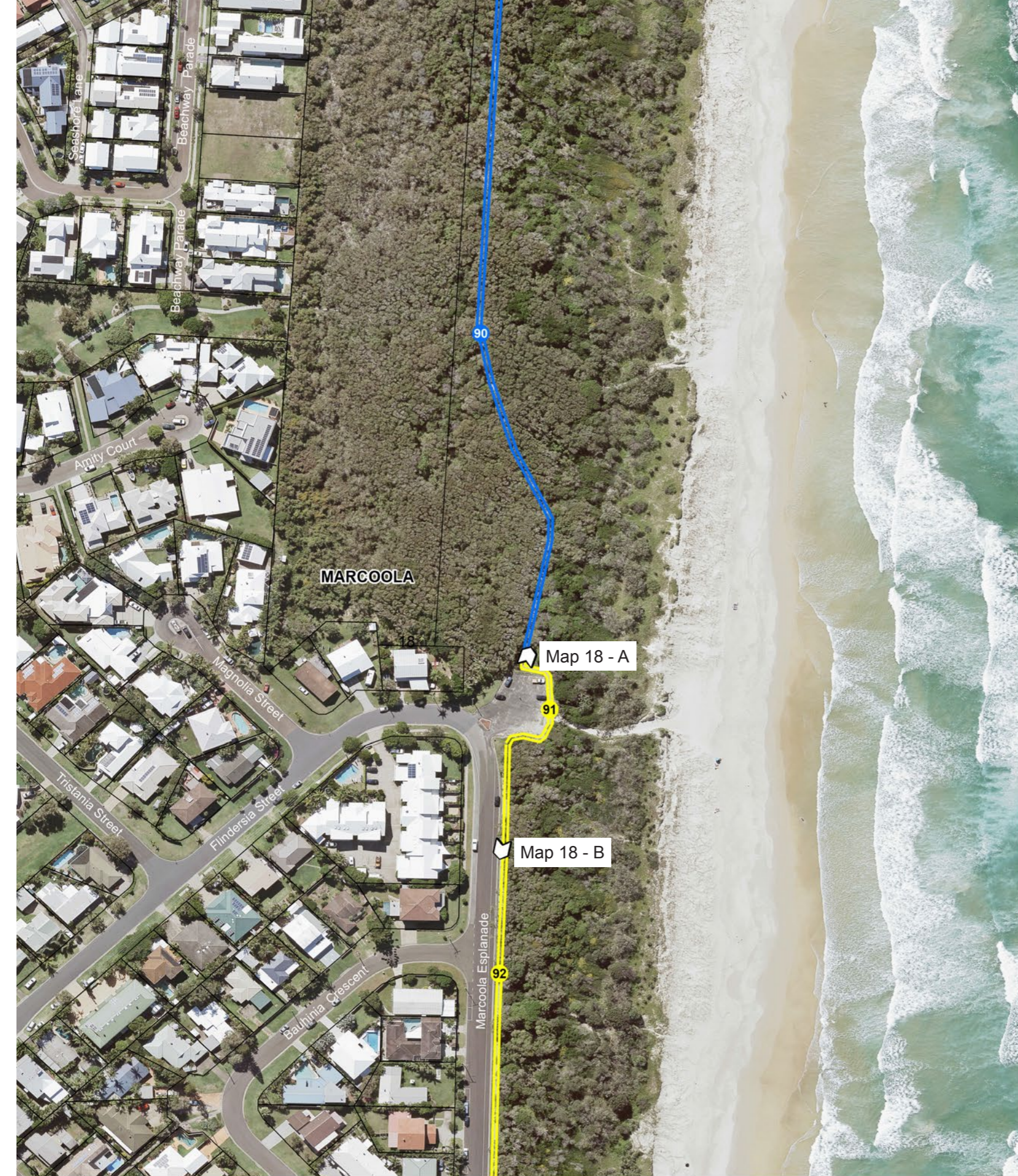
Coastal Pathway Category

- Completed
- 2.4 - 2.9m, Low Priority
- Less than 2.4m, High Priority
- Less than 2.4m, Medium Priority
- Less than 2.4m, Low Priority
- Temporary Link

Missing Links Priority

- High
- Low
- Long Term Planning Option
- Property Boundaries
- Geotagged Photos

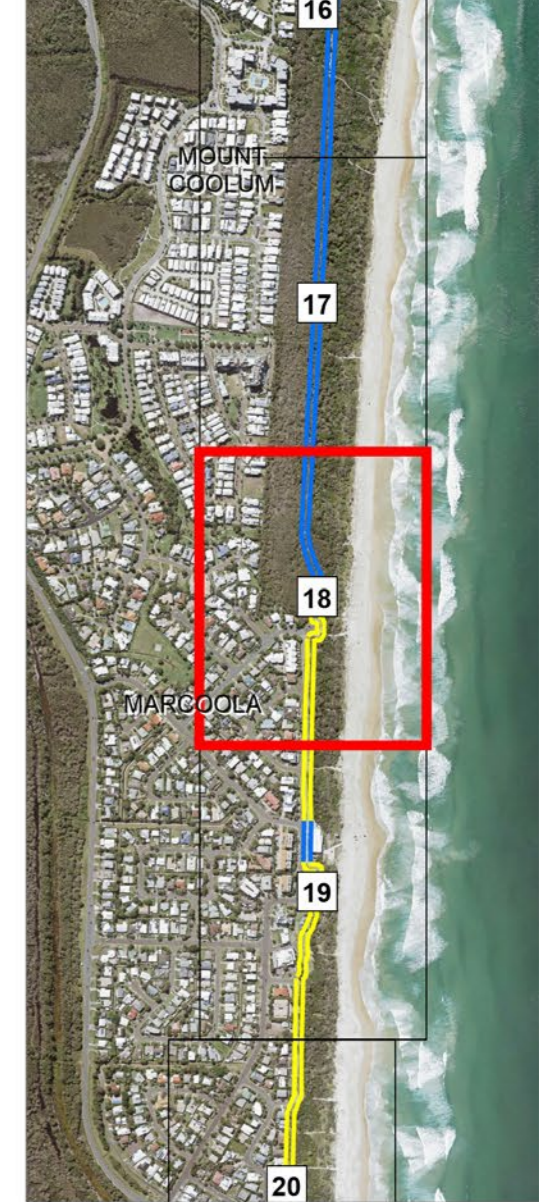




Map 18 - A



Map 18 - B



Key Plan

Coastal Pathway Category

- Completed
- 2.4 - 2.9m, Low Priority
- Less than 2.4m, High Priority
- Less than 2.4m, Medium Priority
- Less than 2.4m, Low Priority

Missing Links Priority

- High
- Low
- Long Term Planning Option
- Property Boundaries
- Geotagged Photos



Map 19 - A



Map 19 - B



Map 19 - C



Key Plan

Coastal Pathway Category

- Completed
- 2.4 - 2.9m, Low Priority
- Less than 2.4m, High Priority
- Less than 2.4m, Medium Priority
- Less than 2.4m, Low Priority

Missing Links Priority

- High
- Low
- Long Term Planning Option

- Property Boundaries
- Geotagged Photos

Conflict points

