

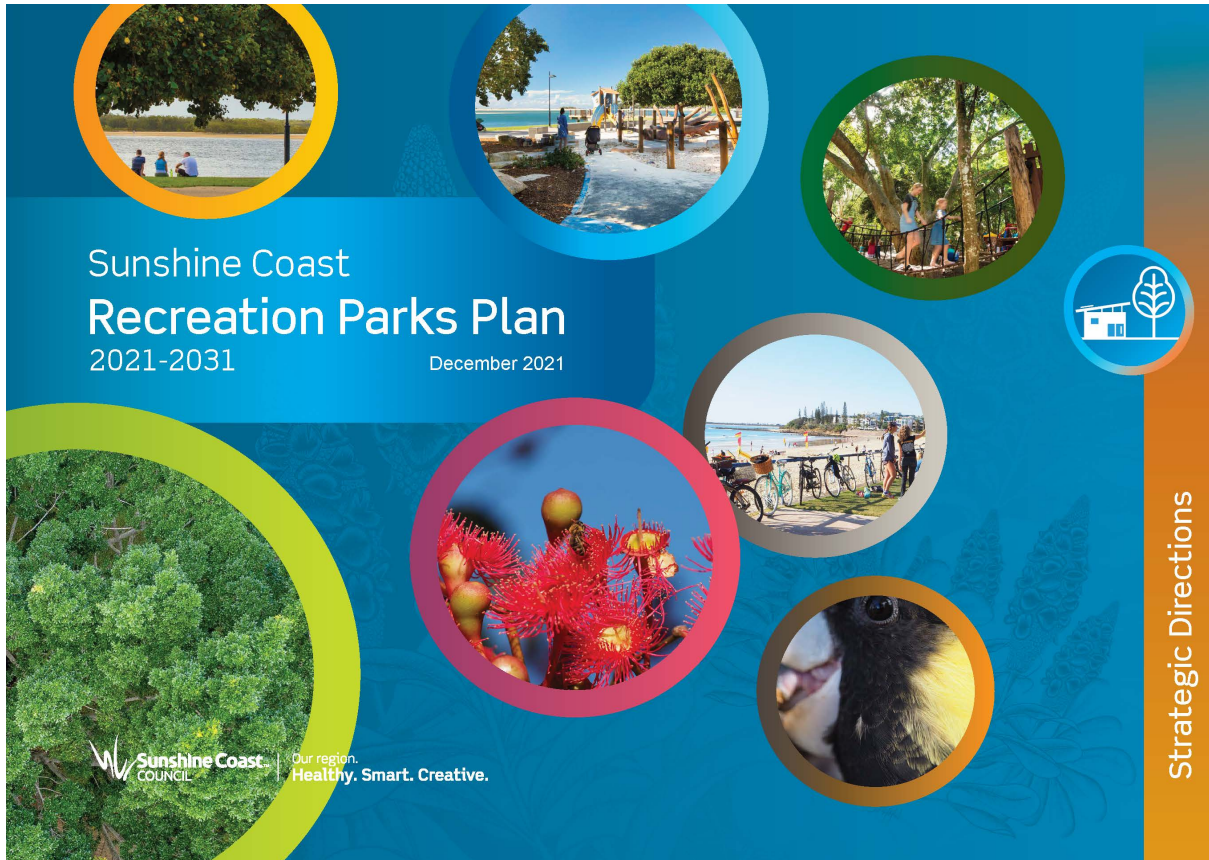


Sunshine Coast Recreation Parks Plan 2021-2031

December 2021

Purpose

Seeking Council Endorsement for the Sunshine Coast Recreation Parks Plan 2021-2031 (RPP)



Agenda

- Re-cap of RPP Goals
- Summary of Consultation Activities
- Endorsement, Implementation and Review
- Questions

Our Goals

Active
Recreation



Scenic
amenity



Social



Ecological



Educational



Economic



Summary of Consultation Activities

Executive Leadership Team – August 2020

- Re-organise draft RPP - policy document and separate technical guidelines
- Flexibility of plan
- Emerging trends

Councillor Workshop – September 2020

- Amend public art section
- Consult with youth groups

Community Engagement – March – April 2021

- Have Your Say website
- Community Survey
- Pop-up consultation stalls
 - 3 coastal locations, 3 hinterland locations
- Targeted email blasts to business, development industry, and community groups
- Social media campaign



What Did the Community Tell Us?

Key issues raised during community consultation

- Protecting our natural assets
- Dogs in parks
- Shade in parks
- Requests for additional parkland and infrastructure
- Equitable distribution of park activities and infrastructure



Community Satisfaction and Support

Level of satisfaction regarding recreation parks - Community Satisfaction Survey 2020

- Provision of recreation parks - 4th highest scoring Council service
 - Only lifeguards, libraries and sporting facilities scored higher
- Identified as a “strength to maintain” – strong contributor to overall satisfaction with SCC

Support for recreation park network vision and goals – draft RPP consultation

- 75% of respondents were supportive of vision - *A resilient network of recreation parks that provide equitable open spaces, connect people and nature, and promote healthy and creative lifestyles*

Recreation Parks Plan Goal	Support for inclusion in future recreation parks planning
Scenic Amenity	79%
Ecological	79%
Social	78%
Active Recreation	76%
Education	68%
Economic	60%

- 73% support overall for RPP Goals

Current Recreation Park Usage

Current rate of utilisation:

- 94% of Sunshine Coast residents visited one of our recreation parks in 2020
 - 4th most-utilised Council facilities behind local sealed roads (99%), footpaths (97%), and beaches (94%)
 - Average resident visited a recreation park at least once a week

Top 3 reasons for visiting our recreation parks:

- Enjoy nature
- Spend time with family
- A place to feel safe

Top 3 current park activities:

- Go for a walk along paths and trails
- Let children explore the park
- Picnics/BBQs

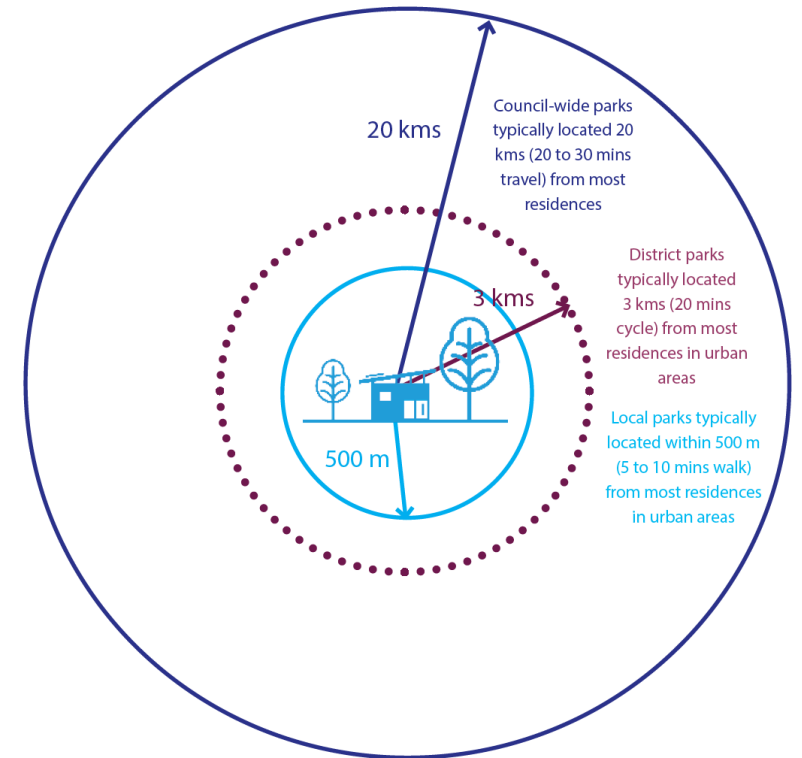


What Does the Community Want to See in the Future?

REQUEST TYPE	SPECIFIC EXAMPLES
Play	<ul style="list-style-type: none">• Water play• Nature play• Adult/teenage play• Specific embellishments - toddler swings, fences, seating for carers
Free Events	<ul style="list-style-type: none">• Free concerts• Outdoor movies• Educational events• Group activities – yoga, tai-chi, gardening/tree planting
Passive Recreation	<ul style="list-style-type: none">• More shade• More paths/trails• Open spaces free from infrastructure
Emerging Activities	<ul style="list-style-type: none">• Pump tracks – skate/scooter and bike• Disc golf• Bouldering/climbing• Parkour/obstacle courses – ninja warrior

How Does the RPP Respond to Community Aspirations and Concerns?

Issue/Opportunity Identified by the Community	RPP Response
Equitable Distribution of Park Activities and Infrastructure	<ul style="list-style-type: none"> Catchment based provision introduced for recreation park activities and infrastructure Recognition of activity shortfalls in LOI analysis
Dogs in Parks	<ul style="list-style-type: none"> Activity plan for Dog Exercise Areas has been included to guide distribution of these facilities Provision of these facilities promotes the use in specific parks while leaving other parks free from off leash dogs
Trees and Shade in Parks	<ul style="list-style-type: none"> The provision of trees and adequate shade is included in network goals and planning principles Provision of natural and artificial shade coverage and vegetated landscape is described for each park type Specific actions relating to the provision of shaded spaces are outlined in the strategic actions
Protecting Our Natural Assets	<ul style="list-style-type: none"> Connecting our community to nature through our recreation parks is a primary goal of the RPP, supported by planning principles Flexibility in RPP allows for lower levels of built infrastructure in natural settings Specific actions related to preservation and enhancement of natural assets included in strategic actions (water management, tree provision and protection)



How Does the RPP Respond to Community Aspirations and Concerns?



Issue/Opportunity Identified by the Community	RPP Response
Requests for Additional Parkland and Infrastructure	<ul style="list-style-type: none"> RPP provides tools to analyse individual community requests – based on existing provision and demonstrated need Current provision analysed against park activity catchments in RPP
Free Events	<ul style="list-style-type: none"> Community events are recognised in RPP as an important park activity Provision of spaces to facilitate these activities described in each appropriate park type
Passive Recreation	<ul style="list-style-type: none"> The provision of spaces for quiet enjoyment is included in network goals and planning principles Considered an important park activity in RPP and is included in activity planning Provision of these spaces included in description and functional space guidelines for each applicable park type Importance of play recognised throughout RPP
Play	<ul style="list-style-type: none"> Guidance on provision of play spaces included in park activity plans and in functional guidelines for each park type Strategic action included to guide further provision of particular types of play (all-abilities, water, nature)
Emerging activities	<ul style="list-style-type: none"> Identified trends (disc golf, pump tracks, bouldering etc.) included in region-wide recommendations in LOI analysis Opportunities to address shortfalls of teenage/young adult play facilities through emerging trends identified

Plan Implementation



Strategic Action Plan

- Measurable actions are assigned under each strategic goal

Planning Scheme

- Elements of plan to be integrated into planning scheme

Local Laws

- Laws to be updated to guide certain uses in parks

Capital Works

- Opportunities to guide current and future projects

Operational Budget

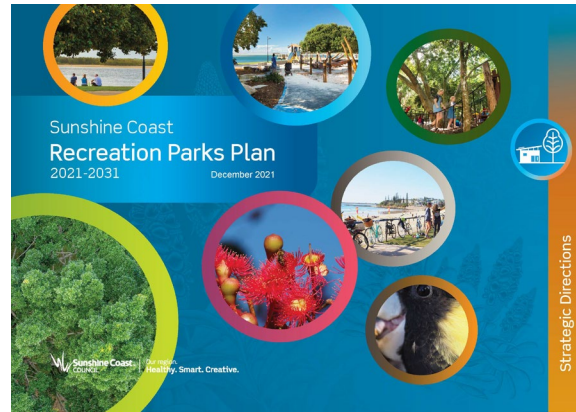
- Extend asset whole of life

Advocacy/Partnerships

- Partnerships to be utilised to progress shared outcomes

Proposed Reviews and Updates

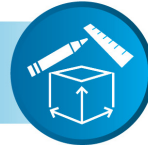
Review and update in 5 years



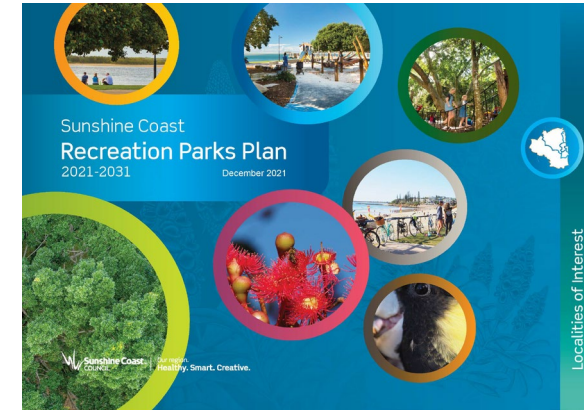
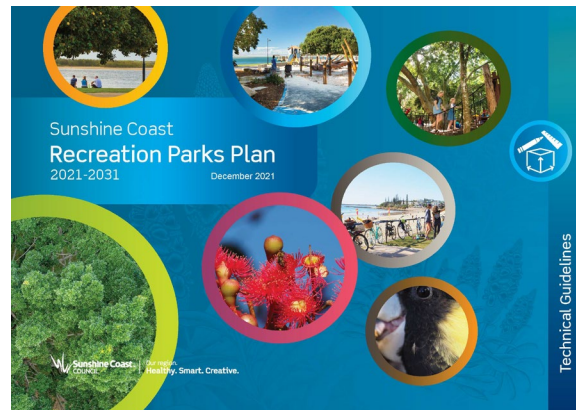
Strategic Directions



Technical Guidelines



Reviewed annually and updated as required



Localities of Interest



Updated regularly as new assets are delivered



Questions?

Thank you.



See council's website for further details
www.sunshinecoast.qld.gov.au