

Bli Bli is located on David Low Way and provides day to day convenience shopping and a community focus for local residents.

**OBSERVATIONS**

The parking supply in Bli Bli is predominantly made up of private off-street parking located at the front of retail tenancies. The nearest public on-street parking is on Bli Bli Road.

**Public parking**

There are about 20 public on-street spaces on a service road located between Castle Green Court and Bli Bli Road. Adjacent development is proposing to remove this parking to create a two way service road. Additionally a small amount of public on-street parking can occur along the upper half of Castle Green Court. There are some on-street spaces in Kupiano Drive.

There are no time restrictions to the public parking resulting in all spaces being available for all day parking.

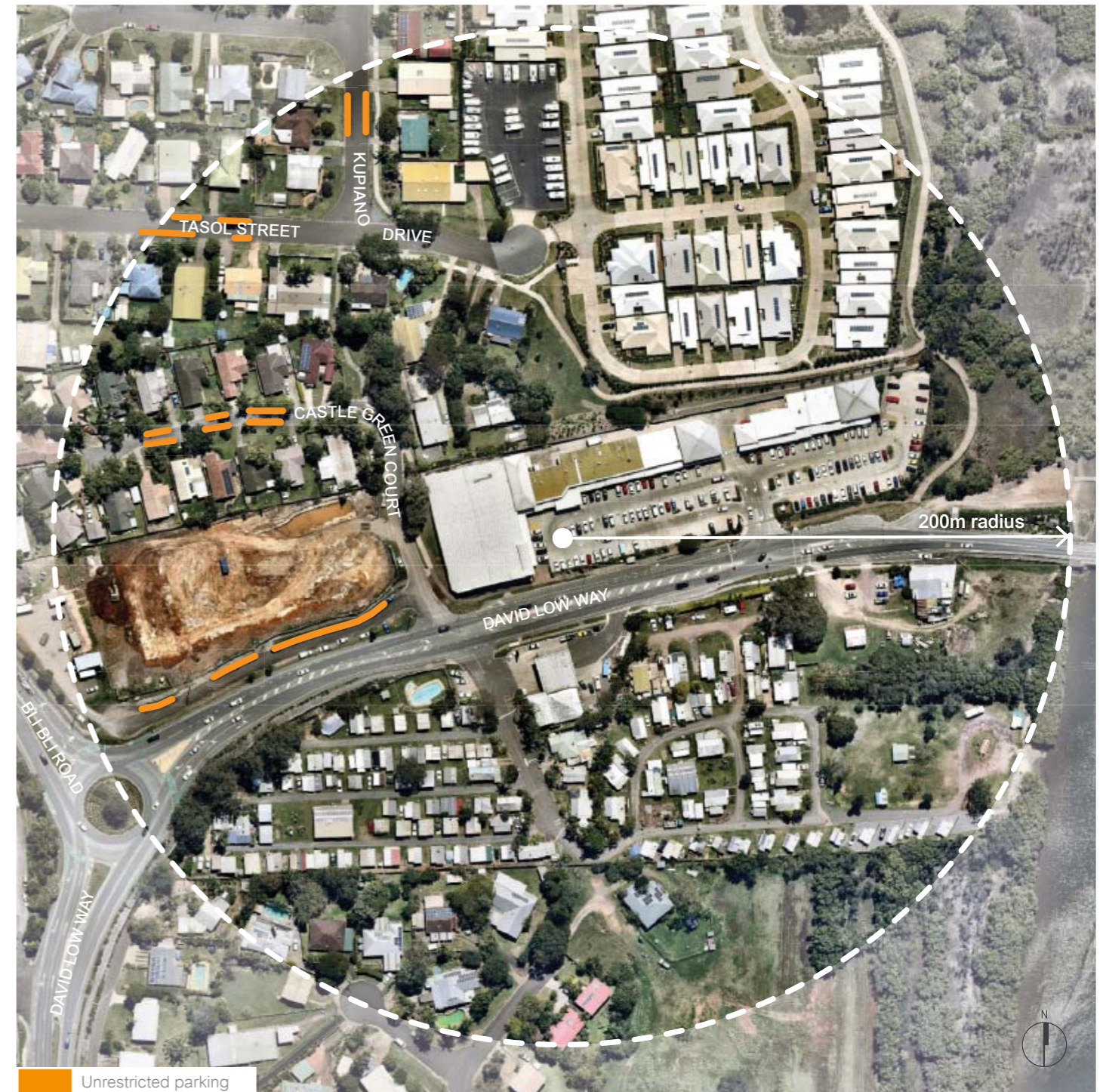
**Private parking**

The developments in the activity centre provide sufficient private off-street parking for staff and customers to the centre. Parking facilities were upgraded as part of the recent centre redevelopment.

**ACTIONS**

There are currently no actions identified in the defined area. Council will undertake a review of parking signage and line marking, continue to monitor the performance of parking in the area and consider options to improve parking in line with the policies set out in council's Parking Management Plan.

The private off-street parking in the Bli Bli activity centre area generally provides sufficient convenient parking to cater for customer parking demands. Public parking in the area is limited so customers rely almost completely on private parking.



Bli Bli parking focus area

Aerial Imagery supplied by NearMap

