

Sunshine Coast Council

Supplier Briefing

13 August, Venue 114



Run sheet

| TIME | PRESENTATION | DURATION |
|-----------------|--|----------|
| 7.00AM - 7.30AM | Registration opens Exhibition opens | 30 mins |
| 7.30AM - 7.40AM | Welcome and opening remarks | 10 mins |
| 7.40AM - 7.48AM | Sunshine Coast Biosphere | 8 mins |
| 7.48AM - 8.13AM | 2025/26 Capital Works Program and tender opportunities | 25 mins |
| 8.13AM - 8.28AM | Supplier arrangements, service contracts and procurement policy | 15 mins |
| 8.28AM - 8.38AM | Workplace health and safety requirements | 10 mins |
| 8.38AM - 8.48AM | Business Support and capability building | 10 mins |
| 8.48AM - 8.53AM | Presentations conclude | 5 mins |

Cr Terry Landsberg

Resilient Economy Portfolio Councillor



Sunshine Coast Biosphere

Roslyn Potter

Biosphere Project Officer
Biosphere Project Team





What is the Sunshine Coast Biosphere ?

- Internationally recognised in June 2022 as part of the World Network of Biosphere Reserves
- Covers the hinterland to the coast and extends 3 nautical miles off the coast
- A place where conservation, community and economy can coexist.
- Collective commitment to living and working sustainably:
 - **Caring** for our natural environment
 - **Belonging** to thriving communities
 - **Growing** out local economy
 - **Creating** a sustainable planet



Why it matters to suppliers ?

We invite suppliers to align with the region's sustainability goals:

- Shared commitment to a thriving Sunshine Coast Biosphere
- Contributing to the Sunshine Coast Council's vision:
Australia's most sustainable region: Connected. Liveable. Thriving
- Aligning with Council's regional strategies including the *Sunshine Coast Regional Economic Development Strategy*
- Delivering on sustainability prepares you for the 2032 Brisbane Olympic and Paralympic Games



How can suppliers get involved?

- It's about implementing sustainable practice in your business
- Review your environmental impact and explore ways to improve
- Watch this space – we're working on a supporter program for the Sunshine Coast Biosphere





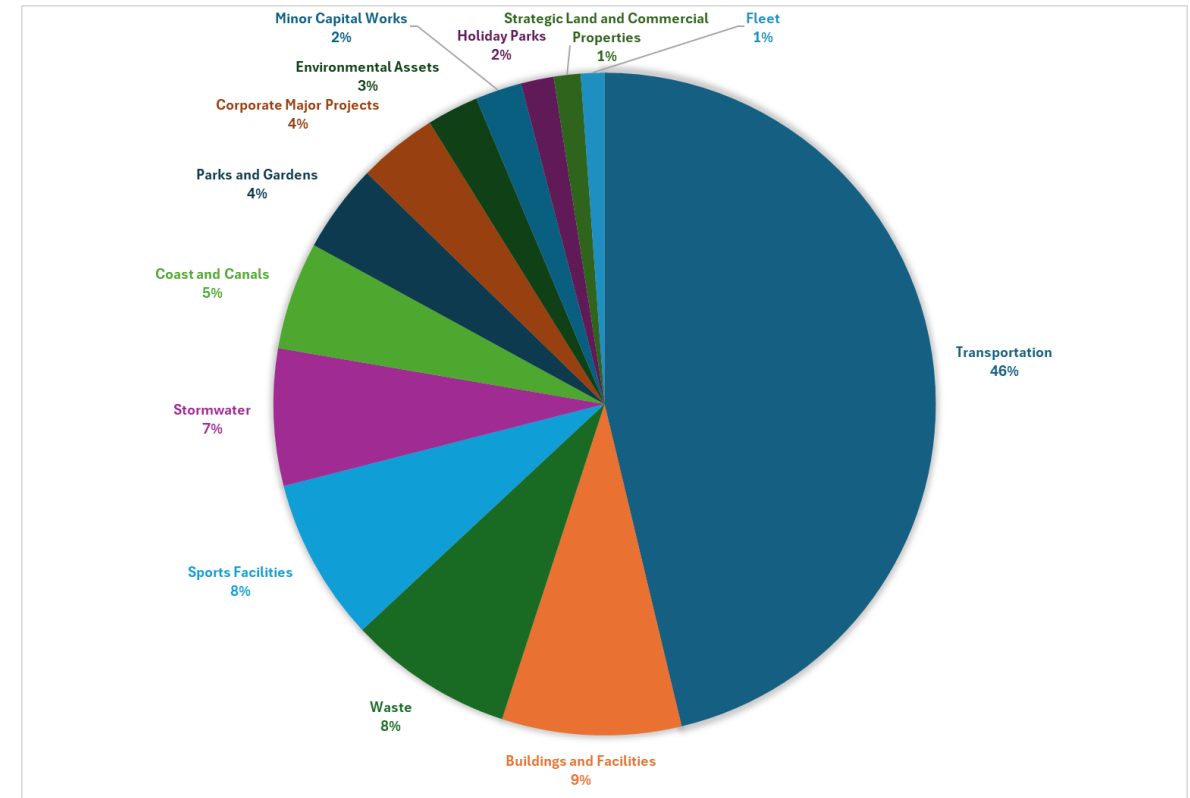
Project Delivery

Chris Sturgess
Manager
Project Delivery



SCC Capital Works Program 2025/26

| Program | Projects | Budget |
|--|------------|-----------------------|
| Aerodromes | 2 | \$ 2,474,399 |
| Buildings and Facilities | 65 | \$ 22,796,774 |
| Coast and Canals | 18 | \$ 13,692,058 |
| Corporate Major Projects | 8 | \$ 10,085,000 |
| Environmental Assets | 11 | \$ 6,573,534 |
| Fleet | 1 | \$ 3,000,000 |
| Holiday Parks | 6 | \$ 4,160,535 |
| Minor Capital Works | 4 | \$ 5,914,566 |
| Parks and Gardens | 193 | \$ 11,240,137 |
| Sports Facilities | 22 | \$ 20,736,080 |
| Stormwater | 26 | \$ 17,401,845 |
| Strategic Land and Commercial Properties | 4 | \$ 3,417,000 |
| Transportation | 104 | \$ 120,501,361 |
| Waste | 49 | \$ 20,971,000 |
| Grand Total | 513 | \$ 262,299,915 |



Project Delivery Branch 2024/25

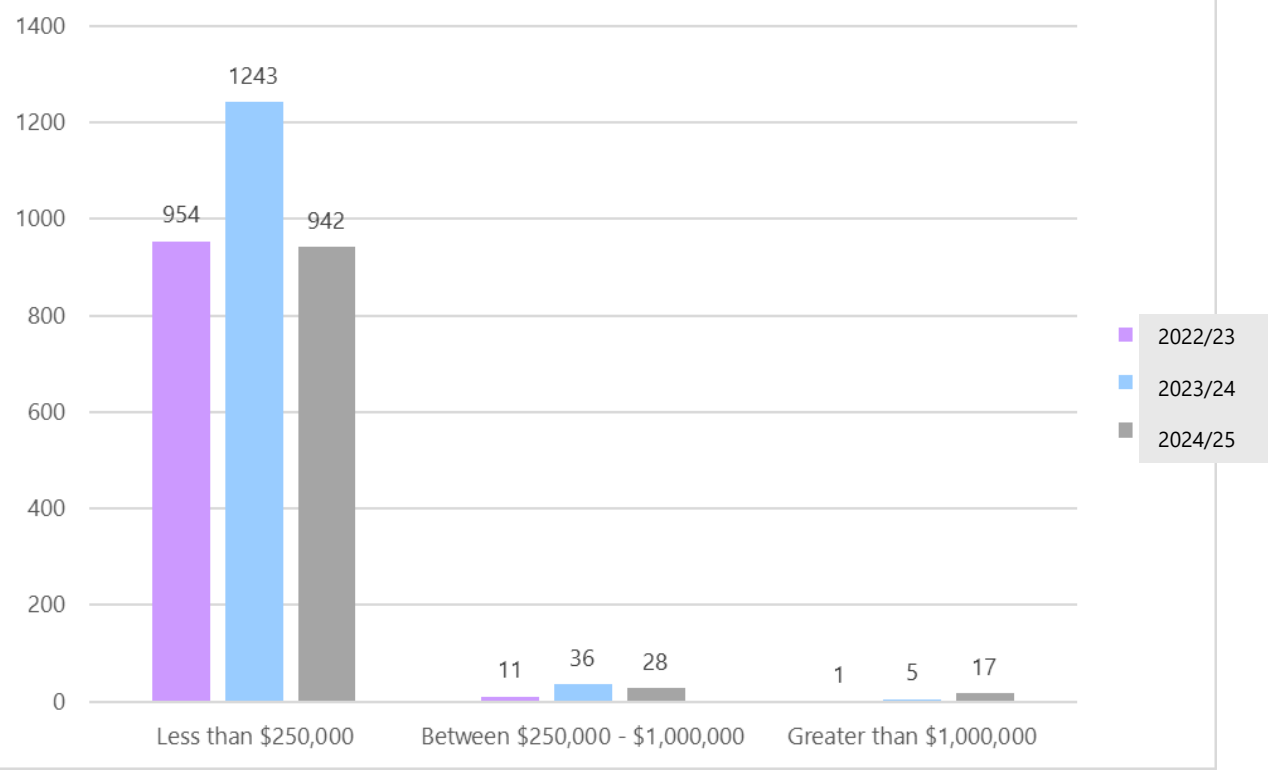


Project Delivery Team Allocations 2025/26FY

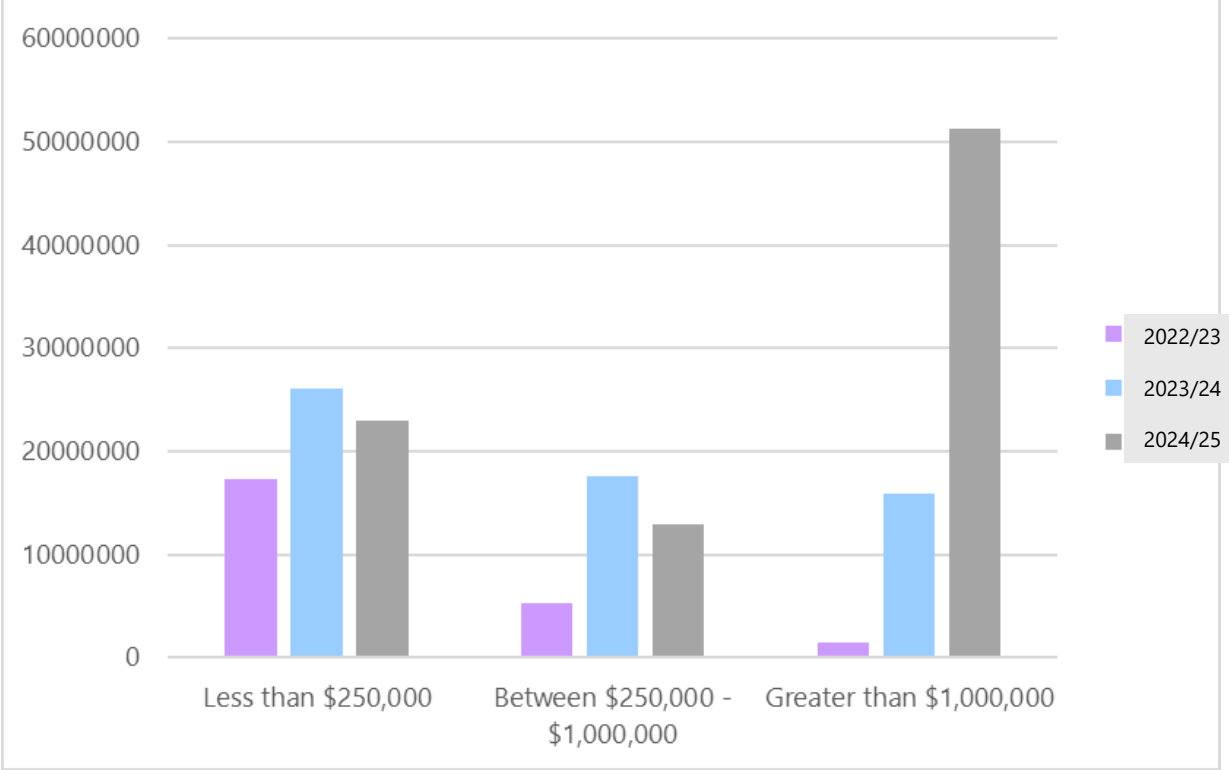
| DeliveryGroup | Projects | CurrentBudget |
|------------------------|----------|---------------|
| PD Urban Projects | 99 | \$54,970,916 |
| PD Civil Projects | 163 | \$81,274,284 |
| PD Recreation Projects | 249 | \$43,755,101 |
| PD Mooloolaba Precinct | 2 | \$17,993,334 |
| Total | 513 | \$197,993,635 |

Purchase Order Overview

Purchase Order Numbers



Purchase Order \$\$ Value



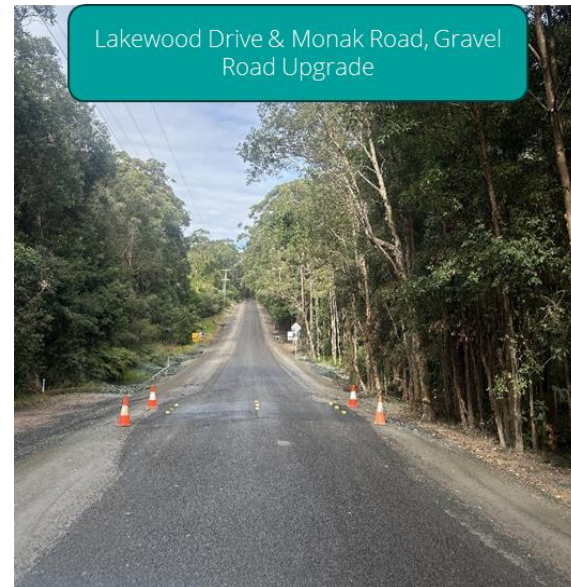
Civil Projects



Eumundi Town Centre



Stringybark Rd Footbridge



Lakewood Drive & Monak Road, Gravel Road Upgrade

Civil Projects 2025/26

Ryan Butler – Civil Program Delivery Manager

| PROJECT | DATE | SIZE (APPROX.) | SCOPE |
|--|-----------------------------|-------------------|--|
| Caloundra Transport Corridor Upgrade (CTCU) | Q2 - Construction Tender | Greater than \$1M | A 1.6km Major Road upgrade connecting Omrah Avenue to the Nicklin Way including signalised intersections, priority active transport corridor and pedestrian facilities and landscaping. |
| First Avenue Streetscape, Maroochydore | Q2 - Construction Tender | Greater than \$1M | Streetscape renewal project to replace failing civil infrastructure and prioritising pedestrians. Provide shared space for cyclists, opportunities for footpath dining and street tree canopies. |
| Maud St Upgrade, Maroochydore | Q2-Q3 - Design Tender | Greater than \$1M | Upgrade between Dalton Drive and Bungama Street with four through lanes, comprising separated two-way cycle track & pathways, and intersection upgrades. |
| Emu Mountain Road Pathway, Peregrine Beach | Q3-Q4 - Construction Tender | Greater than \$1M | New shared pathway for walking and cycling linking safe connections to Coolum High School, high frequency bus stops, the Coastal Pathway and beach access points. |
| Karawatha Drive Cycle Lanes, Mountain Creek | Q3-Q4 - Construction Tender | Greater than \$1M | Karawatha Dr Active Transport Link includes intersection improvements and high priority cycle networks. |
| SCC Stadium North Drainage Upgrade, Bokarina | Q3-Q4 - Construction Tender | Greater than \$1M | Upgrade of drainage network through Kawana Sports Field, from Nicklin Way to Kawana Lake outlet. |

Civil Projects 2025/26

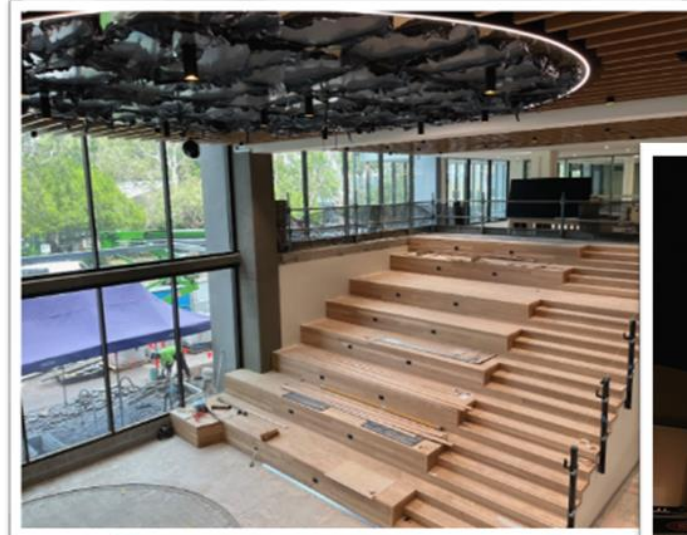
Ryan Butler – Civil Program Delivery Manager

| PROJECT | DATE | SIZE (APPROX.) | SCOPE |
|--|---------------------------|------------------|---|
| Caloundra Central Park Sports Complex, Woodworking, Croquet & Guides Carpark | Q2-Q3 Construction Tender | Less Than \$500k | Upgrade to existing car park area to maximise parking capacity and improve car park access from Arthur Street. |
| Chancellor State College Primary, Stop Drop and Go Zone | Q2-Q3 Construction Tender | Less Than \$500k | Upgrade of an existing parking arrangement to create a formalised stop drop and go bus zone area. |
| Point Arkright Lookout Carpark, Retaining Wall Renewal | Q2-Q3 Construction Tender | Less Than \$500k | Replacement of existing retaining wall utilising resilient materials such as cut sandstone blocks. |
| Caloundra Street, Landsborough New Pathway | Q2-Q3 Construction Tender | Less Than \$500k | New pathway to connect from the existing pathway at 44 Caloundra Street to the pathway outside of Pioneer Park. |
| Pacific Terrace Retaining Wall Remedial Works | Q2-Q3 Construction Tender | Less Than \$500k | Reinforcement works to existing wall |
| Carruthers Bridge Batter Protection | Q2-Q3 Construction Tender | Less Than \$500k | Replace the broken concrete abutment protection. |
| Vulnerable Pedestrians Program (VPP) | Q1-Q4 Construction Tender | Less Than \$500k | A large \$5M+ program broken down into multiple smaller packages that will be ongoing to deliver raised pedestrian crossings throughout the Sunshine Coast. |

Urban Projects



Kawana Aquatic Centre



Caloundra Library +



Urban Projects 2025/26

Tore Shaw – Urban Program Delivery Manager

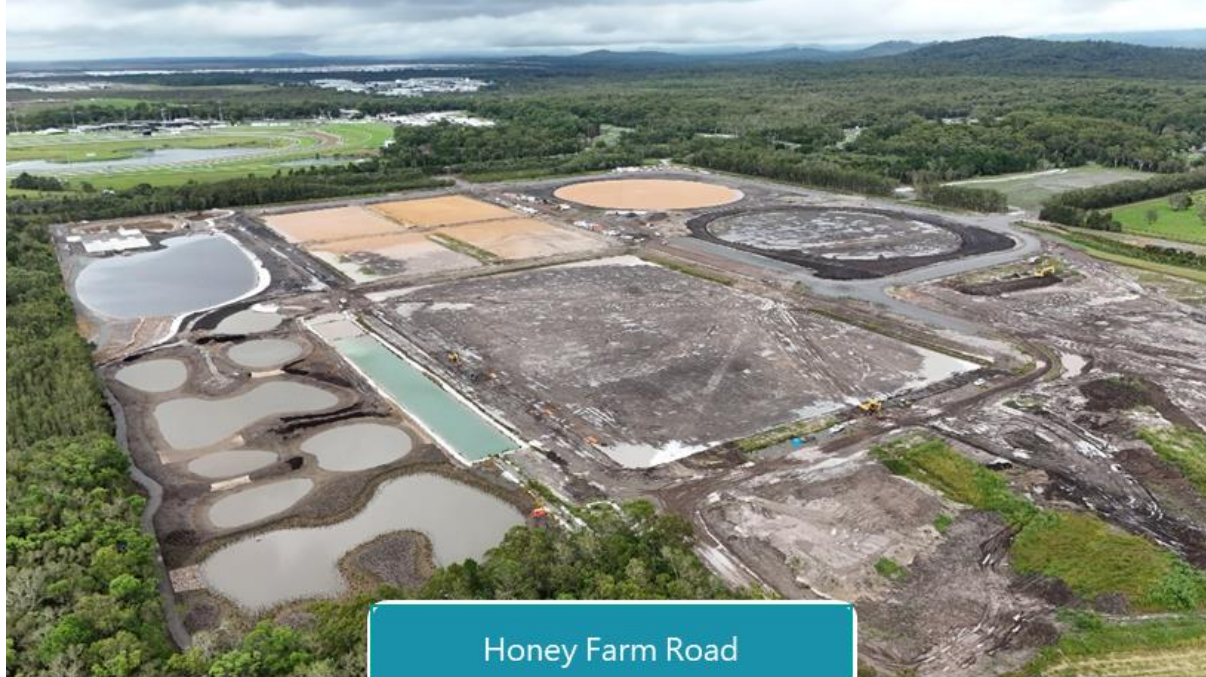
| PROJECT | DATE | SIZE (APPROX.) | SCOPE |
|---|-----------------------------|-----------------------|---|
| Sunshine Coast Nature Based Recreation Precinct | Tenders Q4 Works next FY | Greater than \$1M | Construction of the Mountain Bike Track for the Olympics and supporting facilities. |
| Kings Beach Surf Life Saving Facility | Q4 - Construction Tender | Greater than \$1M | Demolition and Construction of a new life saving facility at Kings Beach |
| Caloundra Centre Activation | Q3-Q4 - Construction Tender | Greater than \$1M | Demolition of existing 77 Bulcock St building and transform into town centre community space. |
| Nambour Administration Building Renewal | Q2 - Construction Tender | Greater than \$1M | Refurbish / replace windows and provide Maintenance to the roof. |
| Kawana Aquatic 25m Pool Resurface | Q3 - Construction Tender | Greater than \$1M | Resurface the 25m pool |
| Mount Coolum Public Amenities | Q3 - Construction Tender | Between \$250k - \$1m | Build a new amenities at the base of Mount Coolum |
| Maleny Showgrounds Infrastructure Renewal | Q2 - Construction Tender | Between \$250k - \$1m | Renewal of inground electrical infrastructure and new switchboard. |

Urban Projects 2025/26

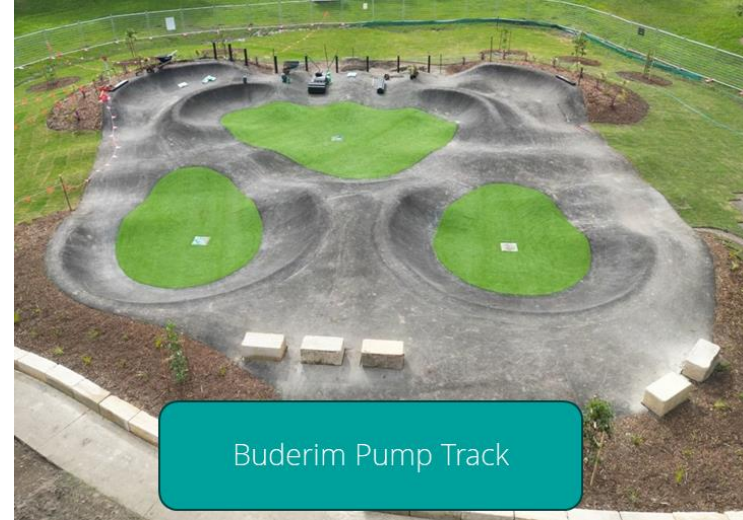
Tore Shaw – Urban Program Delivery Manager

| PROJECT | DATE | SIZE (APPROX.) | SCOPE |
|---|-----------------------------|-----------------------|---|
| Sippy Creek Depot New Fencing | Q3 - Construction Tender | Less than \$250k | Install a fence to delineate between sites |
| Kingfisher Dr Park Power Connection | Q2-Q3 - Construction Tender | Less than \$250k | Connect power at Kingfisher Drive Park to enable events such as Anzac Day Services |
| The Event Centre Caloundra - Public Amenities | Q3 - Construction Tender | Between \$250k - \$1m | Design underway, reconstruction of internal public amenities during mid-2026 |
| The Event Centre - Roof Replacement Playhouse Theatre | Q3 - Construction Tender | Less than \$250k | End of life roof replacement |
| Buderim RRC Fire System Expansion | Q2 Design Tender | Less than \$250k | Investigations and Options analysis for the expansion of the fire system at Buderim RRC |

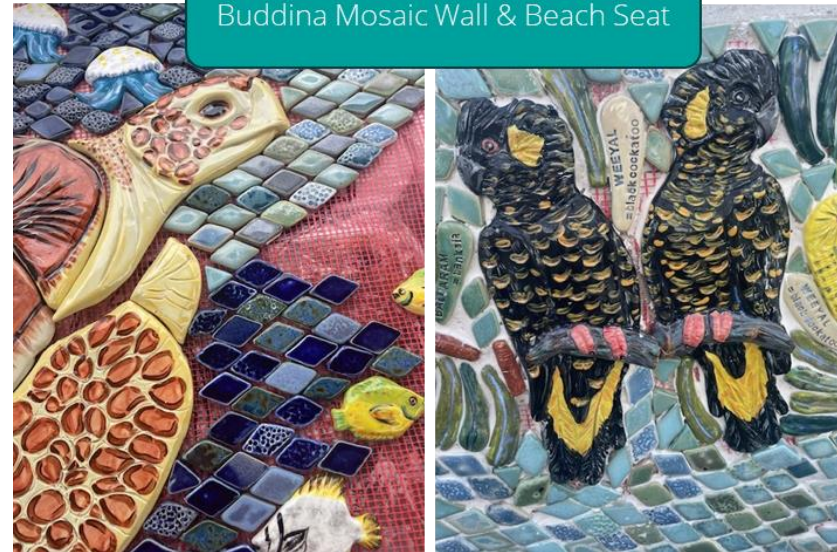
Recreation Projects



Honey Farm Road



Buderim Pump Track



Buddina Mosaic Wall & Beach Seat

Recreation Projects 2025/26

Eunice Van Lill Greyling – Recreation Program Delivery Manager

| PROJECT | DATE | SIZE (APPROX.) | SCOPE |
|--------------------------------|--|-----------------------|---|
| Public Amenities | Q1 - Design RFQ's Construction Tenders Timing TBC | Greater than \$1M | Several new build Several upgrades/ refurbishments |
| Office and residence buildings | Q2 - Construction Tender | Greater than \$1M | Two separate buildings on one site – potentially modular |
| Park Shelter Renewals | Q3 - Construction RFQ | Between \$250k - \$1m | Shelter Renewals |
| Park upgrades | Q2 - Construction RFQ | Between \$250k - \$1m | Structural Landscape and fitness equipment renewal |
| Playground Renewals | Q1, 2 & 3 -Construction RFQ's | Between \$250k - \$1m | Playground Renewals: Play equipment, edging, fencing, soft fall, shade sails. |
| Coastal Path Projects | Q1 & 3 - Construction Tenders and RFQ | Greater than \$1M | 3x separate builds ~160m (new, including priority pedestrian crossing) ~500m (renewal and elevated boardwalk and viewing platforms, structural landscape) ~200m (renewal, landscaping) |
| Sports clubhouses | Q1 - Architectural RFQ Q2 - Construction Tender | Greater than \$1M | Detailed design of one clubhouse Construction of another clubhouse |
| Sports club change rooms | Q1, Q3 & Q4 - Construction Tenders | Greater than \$1M | One change room and club house upgrade One new change room |
| Sports field construction | Q1 - Design RFQ Q3 - Construction Tender | Greater than \$1M | Detailed Civil Design of multi-sport fields and ancillary infrastructure 3 Turfed soccer fields 1 Synthetic turf soccer field 2 cricket fields |

Recreation Projects 2025/26

Eunice Van Lill Greyling – Recreation Program Delivery Manager

| PROJECT | DATE | SIZE (APPROX.) | SCOPE |
|---|--------------------------------|-----------------------|--|
| FRP composite boardwalk projects | Q2/Q3 - Construction RFQ | Between \$250k - \$1m | 4x boardwalk projects One includes concrete path connections One is pedestrian crossing bridge One demolition of timber boardwalk, install new FRP Track and potential boardwalk, pending design outcome (multiple years) |
| Pump Track Project | Q1 - Design & Construct Tender | Between \$250k - \$1m | BMX pump track project |
| Caravan park sites, roads and landscaping | Q2 - Construction Tender Q2 | Greater than \$1M | New roads and caravan sites, landscaping |
| Sports field electrical infrastructure | Q3 - Construction RFQ | Between \$250k - \$1m | Renewal of inground electrical infrastructure and switchboards associated with sports field lighting |
| LED Sign | Q2 - Construction Tender/ RFQ | Less than \$250k | LED Signs Replacement |
| Car park and entrance feature | Q3 or Q4 - Construction Tender | Between \$250k - \$1m | Entrance Feature and Carpark Upgrade for Cemetery |
| Burial beams | Q1 - Construction RFQ | Between \$250k - \$1m | Concrete burial beams across 3 cemeteries |
| Various landscaping | Q4 - Construction RFQ | Between \$250k - \$1m | Concrete paths, garden beds, landscaping features |
| Security Fencing and features | Q2 - Construction RFQ | Between \$250k - \$1m | Fence, automated access gates, locking mechanisms barbed wire. |
| Various softfall projects | Various | Between \$250k - \$1m | Various softfall renewals (some incl. ending) |

Internal & External Services

| SERVICE TYPE | SERVICE AVAILABILITY |
|----------------------------------|---|
| Survey | Mixed internal and external servicing |
| Geotechnical | All external, no internal capacity |
| Landscape Design | Mixed internal and external servicing |
| Environmental Surveys & Audits | All external, no internal capacity |
| Structural Design | All external, no internal capacity |
| Lighting & Traffic Signal Design | All external, no internal capacity |
| Civil Construction | Mixed internal and external servicing |
| Landscape Construction | All externally contracted, no internal capacity |
| Lighting & Traffic Signals Work | All externally contracted, no internal capacity |

Supplier Arrangements

There are 4 Supplier Arrangements directly aligned with Project Delivery Branch as detailed below:

| PROJECT | DATE | SCOPE |
|---|--|-------------------------------------|
| SA242 - Supplier Arrangement for Streetscape and Parks Landscape Construction. This Supplier Arrangement is for the supply and/or supply and installation of playground and for the supply and installation of exercise equipment. | Commencement Date: 1 June 2025 Expiry Date: 31 May 2028 | Extension Options: 2 x 12 months |
| SA232 - Supplier Arrangement for Playground and Exercise Equipment. This Supplier Arrangement is for Landscape, Open Space Structures, Boardwalks & Jetty Construction Works. | Commencement Date: 1 November 2024 Expiry Date: 31 October 2027 | Extension Options: 2 x 12 month |
| SA243 - Supplier Arrangement for Concrete Construction | Commencement Date: 1 July 2025 Expiry Date: 30 June 2027 | Extension Options: 2 x 12 months |
| SA227 - Supplier Arrangement for Engineering Design Services This Supplier Arrangement for infrastructure design services is for civil works design; environmental investigations and approvals; flood modelling and hydraulics studies; geotechnical investigation and design; and structural design. | Commencement Date: 1 January 2024 Expiry Date: 31 December 2026 | Extension Options: 1 x 24 months |

Doing Business with Council Procurement

Ben Vandenberg
Acting Manager
Procurement



Sunshine Coast Council

Australia's most sustainable region – Connected. Liveable. Thriving.

2024/25 Financial Year

- \$370.5million or 75.9% of our procurement spend being with local suppliers.

2025/26 Financial Year

- Budget of \$973 million.
- \$262.3 million Capital Works Program

How do we procure?

| Threshold (GST Exc) | Typical Procurement Route |
|------------------------|---|
| \$0 - \$50,000 | Direct Request for Quote <i>(local preference)</i> |
| \$50,000 - \$500,000 | Direct Request for Quote <i>(minimum 3 capable suppliers invited – local preference)</i> |
| \$500,000 and greater | Public Tender <i>Advertised via Council's Tender Alert Service and VendorPanel</i> |
| Exceptions – Any value | Refer to Procurement Policy – Example Supplier Arrangements |

How do we procure – Supplier Arrangements

- Established where the goods or services are required frequently, in high volume, or where it is important to understand the capability of the suppliers
- Established by way of a Public Tender (or Request for Quote) process
- May be priced or non-priced
- Typically established for a period of 2 to 5 years

Council currently has **15** Supplier Arrangements:

- 4 relate to goods or services (e.g. trade and general services, traffic control services)
- 6 relate to construction works or similar (e.g. streetscape and parks landscape construction)
- 5 relate to fleet and equipment lease and/or hire services (e.g dry or wet hire of equipment)

At times, Council may procure goods and/or services from established Government Entity Arrangements (e.g. Local Buy). Council does not have an established Arrangement for all types of goods and services sourced by Council.

Currently established Supplier Arrangement

| Supplier Arrangement | Expiry Date | Extension Options |
|--|-------------------|-------------------|
| Engineering Design Services - Civil (Arrangement No. SA227) | 31 December 2026 | 1 x 24 months |
| Trade and General Services (Arrangement No. SA241) | 31 March 2028 | 2 x 12 months |
| Supply and Installation of Playground and Exercise Equipment (Arrangement No. SA232) | 31 October 2027 | 2 x 12 months |
| Supply of Road Safety and Indicator Signs and Accessories (Arrangement No. SA2210) | 31 December 2026 | 2 x 12 months |
| Traffic Control Services (Arrangement No. SA2211) | 30 June 2027 | 1 x 24 months |
| Supply and Delivery of Premix Concrete (Arrangement No. SA228) | 31 August 2026 | 1 x 24 months |
| Stormwater Pipe Rehabilitation (Arrangement No. SA2010) | 13 September 2025 | Nil |
| Quarry Products (Arrangement No. SA2011) | 30 June 2026 | 1 x 12 months |
| Training and Assessment of Plant and Equipment Operators (Arrangement No. SA213) | 31 May 2026 | 1 x 12 months |
| Hire of Plant and Operator (Wet Hire) (Arrangement No. SA226) | 30 June 2027 | 3 x 12 months |
| Dry Hire of Plant and Equipment (Arrangement No. SA203) | 10 March 2026 | Nil |

Currently established Supplier Arrangement (cont'd)

| Supplier Arrangement | Expiry Date | Extension Options |
|--|-----------------|-------------------|
| Lease of Light Vehicles (Arrangement No. SA231) | 24 January 2027 | 2 x 12 months |
| Fleet Mechanical Repairs and Maintenance (Arrangement No. SA205) | 13 June 2026 | Nil |
| Streetscape and Parks Landscape Construction (Arrangement No. SA242) | 31 May 2028 | 2 x 12 months |
| Concrete Construction (Arrangement No. SA243) | 30 June 2027 | 2 x 12 months |

Potential upcoming Supplier Arrangements:

- Dry Hire of Plant and Equipment
- Stormwater Pipe Rehabilitation

How do we evaluate?

- All procurement activities undertaken with a value greater than \$50,000 (GST exc) have pre-determined Evaluation Criteria and weightings. These are outlined in the Request for Quote and Tender Invitation documents for each procurement.
- Submissions are assessed under probity by an established Evaluation Panel against the prescribed criteria and weightings.

Evaluation Criteria will typically include for contracts greater than \$50,000:

| Mandatory | Evaluation (often called Non-Price) | Price |
|--|---|---|
| Health and Safety Compliance - Insurance and Licences, Conflict of Interest etc. Financial Capacity (<i>if applicable</i>) | Capability and Experience Methodology - Delivery Methodology, Resources, Environment and Sustainability Social and Economic Factors Local, First Nations and Social Benefit | Price OR Value for Money Proposition |

How do we evaluate – Capability & Exp and Methodology

- **Capability and experience** – demonstrate experience, capacity, capability and track record in completing projects of a similar nature
 - Assume that the people evaluating don't know you – provide detail
 - How are your example projects similar to and relevant
 - Does the team you are proposing have the capability and experience
 - Examples don't need to be with Council
- **Methodology** – demonstrate your understanding of Council's requirements
 - Methodology for delivery – refer to specification – how will you deliver
 - Quality Assurance – detail your system and how it will be applied. Provide policy and any relevant accreditations
 - Environment & Sustainability – what does your organisation currently do, what will you apply to this contract. Provide policy and any relevant accreditations.

How do we evaluate – Social and Economic Factors Criteria

- Council has adopted guidelines that support the Procurement Policy to help us deliver on our strategic goals and priorities, including the **Local Preference in Procurement, First Nations Procurement** and **Social Benefit Procurement** Guidelines.
- Procurement activities (greater than \$50,000) undertaken by Council include the **Social and Economic Factors** criteria.
- This is a weighted criteria (typically 20% of total 100%) which allows suppliers to address how they contribute to the local economy and/or identify any social benefit or first nation provider opportunities within their business and/or supply chain.
- Each guideline specifically sets out how submissions are assessed against this criteria – including the definition of what Council considers a ‘local’ or ‘deemed local’ business etc.

Council's Procurement Policy and associated Guidelines can be found on Council's website.

How do we evaluate – Contribution to Local Economy

The criterion will be evaluated having regard to:

- The local presence of the Respondent – Local, Deemed Local or Non-Local Supplier

| | |
|-----------------------------------|---|
| Local Supplier (10/10) | A supplier who was established in and maintains their primary office or business premises with the SC local government area (SCLGA); OR has an office or business premises, but not the primary premises, within the SC LGA. |
| Deemed Local Supplier (5/10) | A supplier who does not have a primary office or business premises within the SCLGA, but has a significant business or primary service area in the SCLGA and/or a significant employee base that undertake work within the SCLGA (this employee base may include staff who work remotely on a regular basis from the LGA) |
| Non-Local Supplier (0/10) | A supplier who is not from the within the SCLGA or is not a Deemed Local Supplier |

- The Respondent's explanation of the contribution already being made to the local economy, the contribution that will be made should they be awarded the Contract, or both (for example - use of local sub-contractors and suppliers, new employment opportunities, evidence of support for local community organisations.

How do we evaluate – Social Benefit and First Nations

The criterion will be evaluated having regard to **Social Benefit** engagement:

| A Supplier is a Social Benefit Supplier | Scoring 10/10 |
|---|---------------|
| A Supplier that is not a Social Benefit Supplier but demonstrates that they are engaging Social Benefit Suppliers in their supply chain | Scoring 5/10 |
| Not a Social Benefit Supplier and not engaging Social Benefit Suppliers in their supply chain | Scoring 0/10 |

The criterion will be evaluated having regard to **First Nations** engagement:

| A Supplier is a First Nations Business | Scoring 10/10 |
|---|---------------|
| A Supplier that is not a First Nations Business that demonstrates that they are engaging First Nations Business/es in their supply chain, employ more than 25% First Nations people or can demonstrate and commit to the employment of at least one additional First Nations person in the delivery of the Contract | Scoring 5/10 |
| Non- First Nations Business that is not engaging First Nations Business in their supply chain | Scoring 0/10 |

Opportunities – Tips for tendering

- Ensure you have read and understood all available invitation documentation to understand Council's requirements and expectations for the works
- Emphasise the unique value you bring, such as experience, expertise, quality, and value-adds and how these align to the project requirements
- Clearly outline and demonstrate your understanding of the works and how you propose to deliver the project requirements in your response - *tell us how you will do it, not just that you can do it!*
- Ensure you address all parts of the required response documentation, including addressing mandatory requirements such as Health and Safety and other compliance documentation
- Consider the application of Council's strategies and priorities and demonstrate in your response your ability and commitment to helping achieve the objectives (including environment and sustainability, local, first nations and social)
- Ensure that any feedback provided on your submissions are considered and applied to your future responses

Suppliers that best demonstrate their capability and method of completing the works, while aligning with council's strategic priorities and goals will be regarded highly.

Environmental, Social Governance (ESG)

- Environmental
 - **Sustainability in Procurement Guideline**
 - Current company initiatives and what can be applied to this contract
 - Policies and accreditations
- Social
 - **First Nations Procurement** and **Social Benefit Procurement** Guidelines
 - Workplace health and safety
- Governance
 - Currently addressed generally
- ESG will become an area of increasing focus –
 - Make sure you are informed and prepared
 - Take advantage of resources available and assistance provided

Opportunities – Current and upcoming

Currently or soon to be released Tenders (VendorPanel):

- Maintenance of Plant & Equipment - Aquatic Recreation Facilities (Contract No. ITT2434)
- Road Stabilisation Program 2025-2026 (Contract No. ITT254)
- Landfill Operations (Contract ITT2448)

Potential upcoming Supplier Arrangements:

- Dry Hire of Plant and Equipment
- Stormwater Pipe Rehabilitation

Opportunities – Potential upcoming (25/26)

- Pathway Grinding Services
- Internal Courier and Mail Sorting Services
- Turf Maintenance Services
- Slashing Services
- Cemetery Mowing Services
- Fire Prevention Maintenance
- Maintenance and Testing of Diesel Generators
- Servicing and Maintenance of Leachate and Sewerage Pumps
- Security Services
- Supply and Installation of Festive Season Decorations
- Supply and Installation of Festive Season Decorations
- Management Services of Holiday Parks (Dicky Beach, Coolum Beach and Mudjimba)
- Invasive Pest Plant Management of Council Road Reserves
- Education Services - Waste and Resource Management
- Supply of Memorials, Plaques and Monumental Services
- Cartage of Quarry Products
- Replenishment Dredging - Maroochydore Beach

This is an indicative list of service contracts to likely be renewed in 2025/2026. This is not a definitive list.

Opportunities – Potential upcoming (25/26)

- **Turf Maintenance Services – expires 30 June 2026**
 - Open space, road network, Sports field
 - Turf maintenance, general maintenance, green waste removal, tree hand pruning, inspections, herbicide application
- **Slashing Services - expires 30 June 2026**
 - Rural roadside network, open space and environmental reserves
 - Tractor and all terrain plus mowing, brush cutting and herbicide application where required.
- **Security Services - expires 30 June 2026**
 - Monitoring services, maintenance, security patrol, guarding and event security
- **Management Services of Holiday Parks (Dicky Beach, Coolum Beach and Mudjimba) – Expires 30 June 2026**
 - Management services for the day-to-day operation

How do I get notified

Sunshine Coast Council Tender Alert Service - By subscribing to Council's Tender Alert Service, you will receive email alerts advising of new Public Tenders as they are advertised and released on VendorPanel. To subscribe to the Tender Alert Service, please visit Council's [Current Tenders](#) webpage to subscribe. *It is free to subscribe.*

VendorPanel - Council utilise VendorPanel to release Public Tenders. To access and submit Council tenders you will need to be registered on VendorPanel. VendorPanel also allows suppliers to view other Local Government and State Government tenders throughout Queensland. More details on how to register to VendorPanel can be found on Council's [Current Tenders](#) webpage.

First Nations Businesses and Supply Chain - Council recognises the inherent benefits in contracting with First Nations suppliers or supply chains. If you are a First Nations Business or are looking to engage First Nations Businesses in your supply chain, you may wish to visit the below business directories (Supply Nation - <https://supplynation.org.au> and Black Business Finder - <http://www.bbf.org.au/about.html>)

Local Buy - Local Buy's core business is contracts: establishing common-use procurement arrangements for Councils and Local Government authorities - <http://www.localbuy.net.au/>



Sunshine Coast Council Tender Alert Service



Wellbeing, Health & Safety

Michelle Atkinson

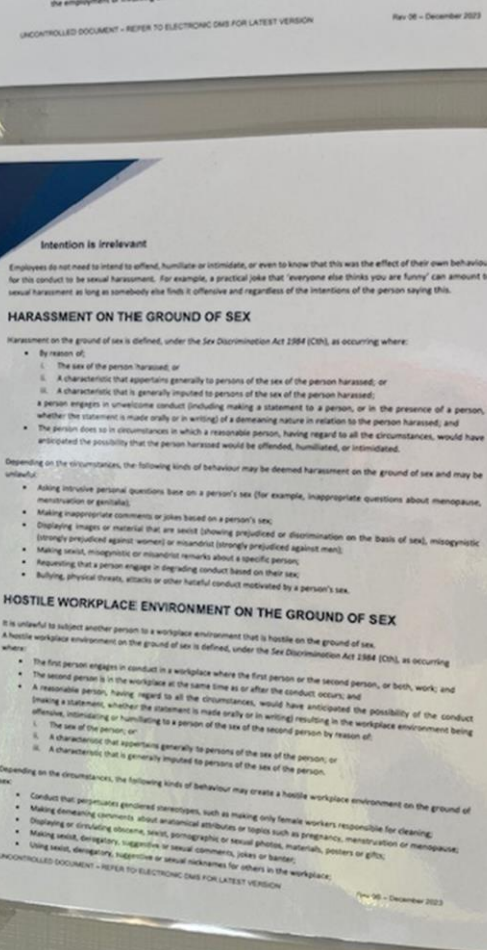
Principal WHS Operations
Wellbeing, Health & Safety

Why Wellbeing, Health and Safety?

- WHS is about safeguarding people, business and industry
- Legal obligations and reputation depend on safe practices
- Suppliers and Contractors play a key role in safety

Our expectations: Do what you say you will

- WHS commitments must reflect actual practices
- Safety commitments should be evident in daily operations
- Inductions, supervision, and incident response must align
- Continuous improvement - preventing a reoccurrence



Sexual harassment and sex or gender-based harassment

Most jobs involve some risk of sexual harassment or sex or gender-based harassment. This is a hazard and can cause both psychological and physical harm.

Under the [Work Health and Safety Regulation 2011](#) [🔗](#) (WHS Regulation), a person conducting a business or undertaking (PCBU), such as an employer, must proactively manage the risk of sexual harassment and sex or gender-based harassment at work.

| Safety & prevention | |
|--|---|
| Consultation, representation and participation | + |
| Creating safe work | + |
| Hazards | + |
| Mental health | — |
| Mentally healthy workplaces toolkit | |
| Psychosocial hazards | — |

High risk construction work

- SWMS required for high-risk activities
- Pre-start walk – identify, assess. Prior to commencement, must be project-specific, communicated, reviewed, and used
- Examples: working at heights, near traffic, trenches, mobile plant



inSite
CONSTRUCTION SERVICES

Daily HSEQ Production Pre-Start Meeting

Location: Nambour Showgrounds Meeting conducted by: Dave McEnroll

25 Time: 7:00am Day: Tuesday

Meeting Details - 3177 - Nambour Showground Amenities inSite Construction Services

Safety Issues, Concerns or Observations

| | |
|--|--|
| Heat issues, public safety, site conditions, plant on site | Shower or two, Top of 21 degrees, bit of mud around still present do not take any machinery out on top the road if you do need to make sure to cleaned up. |
|--|--|

Review of today's program

| | |
|---|---|
| What will each trade be doing and where? Will there be a clash or crowding in an area? Will they be using plant that everyone should be aware of? | RD WORKS - Prepping external foot path. Huff Group - Connecting into sewer pump. Perfect Pipes Plumbing- Down Pipes |
|---|---|

Environmental

Noise, dust, vibration, fauna

General

| | |
|--|--|
| any other business or notices - expected visitors to site, activities outside the construction site that may impact the site | Due to the expo the top gate will be shut today everyone will have to enter thru the front entrance and please minimise the vehicles onsite we are only to have 6 vehicles today. If we can minimise coming and going from the showgrounds today would be great. |
|--|--|

Agenda

Attendees

- ☒ Allow Signatures Through Sign-In App
- ☒ Allow All Approved Workers To Sign via Meeting QR Code

Observations Identified

Comments

Even low risk doesn't mean no risk

- Safe systems of work expected
- Training records, incident reporting, hazard management
- Safety applies to all jobs, regardless of size

Being a good partner

- Open communication with council
- Report incidents and changes
- Ask for support when needed
- Honesty and consistency build trust

Working safely is not a competitive disadvantage—it's a mark of professionalism.



Local Business Support

Economic Development

Sustainable Growth and Planning

Mandy Day

Team Leader – Business Support & Place Activation

Tyler Harford

Project Officer – Business & Industry Development



Regional Strategies

The cover features a wide-angle aerial photograph of the Sunshine Coast at dusk. The city lights are visible along the coast, with the ocean and mountains in the background. The title is centered in the lower half.

Sunshine Coast Regional Economic Development Strategy 2013-2033

2023 Refresh and Five-Year
Implementation Plan

The cover has a solid orange-to-yellow gradient header. Below it is a photograph of a family (a man, a woman, and a child) and a dog sitting on a bench outdoors. A large, stylized yellow and orange graphic is overlaid on the left side of the photo.

Sunshine Coast Community Strategy 2019-2041

2024 Refresh and Action Plan 2024-2029

Environment and Liveability Strategy OVERVIEW

A healthy environment and liveable Sunshine Coast in 2041

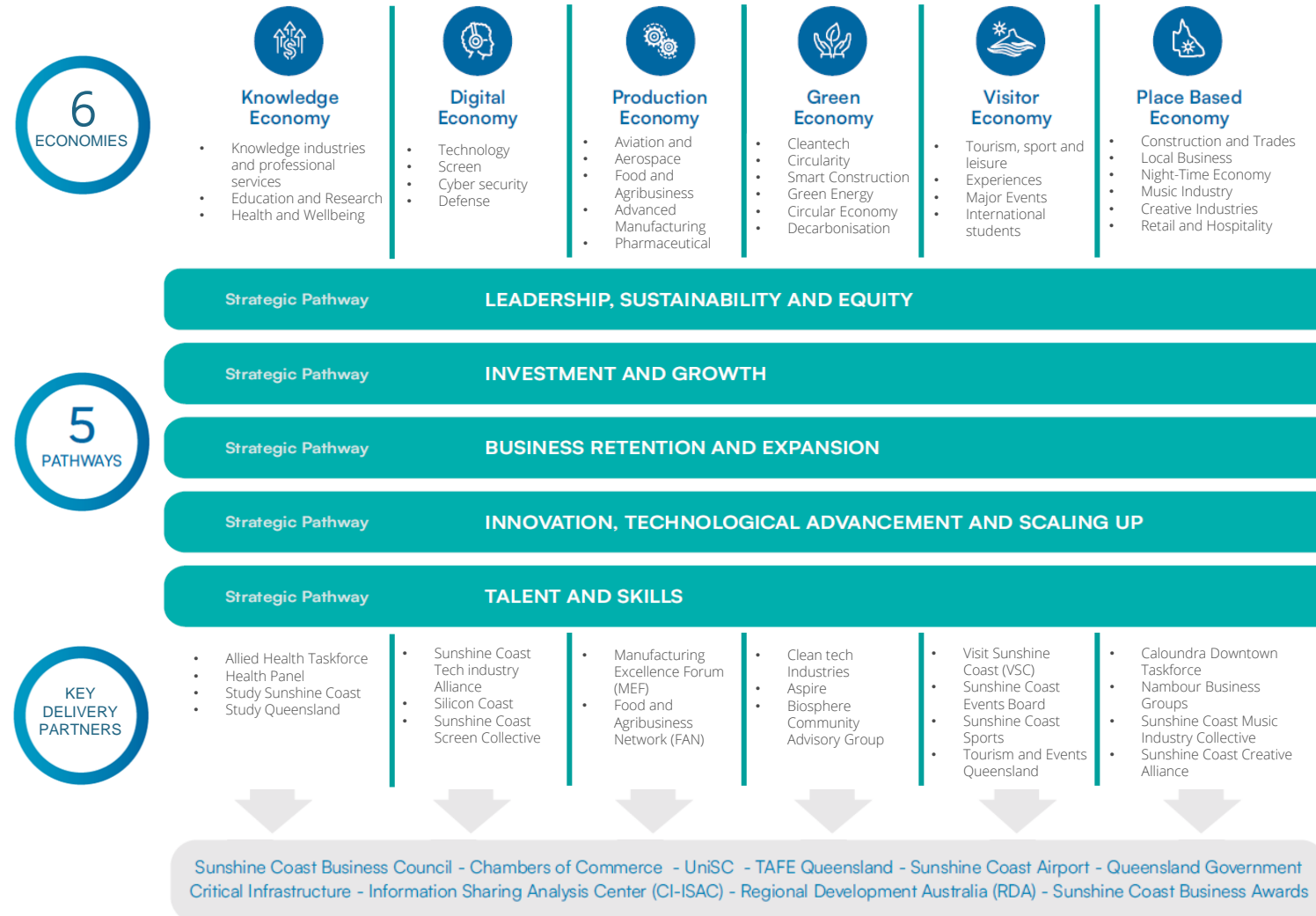
Building a pathway to a healthy environment and liveable Sunshine Coast:

- Maintain and nurture our natural environment
- Respond to the challenge of population growth
- Build resilience against the potential impacts of climate change
- Create liveable spaces and places to live, work and play
- Drive renewable energy, efficiency and technical know-how
- Live up to the expectations of future generations



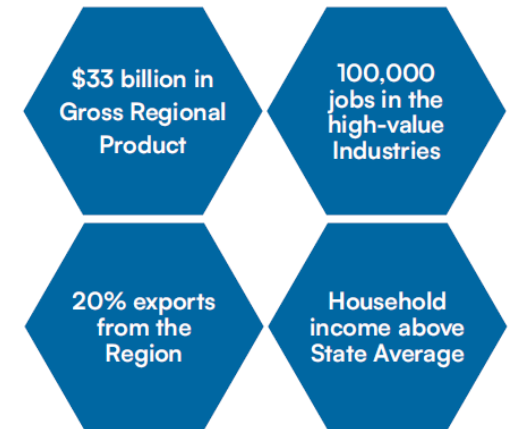
For more information
www.sunshinecoast.qld.gov.au

A Refreshed Regional Economic Development Strategy (REDS)



2033

The REDS set forth a visionary 20-year blueprint aiming to transition the traditional economy to a new economy that is resilient and globally competitive. The strategy was unique and bold, setting four ambitious goals to achieve the new economy by 2033



4 Key Performance Indicators

| | 2013 Baseline Results ¹ | 2023-24 Outcomes ² | 2013 to 2024 Progress | 2033 Aspirational Goals ² |
|--|--|--|--|---|
| Goal 1 Gross Regional Product growth | A \$13.8 billion economy | A \$23.73 billion economy | ✓ 72% growth over the 11-year period | Gross Regional Product growth up to \$33 billion by 2033 |
| Goal 2 Jobs growth in high-value industries | High-value industries provided 59,000 employment opportunities | High-value industries providing 107,283 employment opportunities ³ | ✓ 82% growth over the 11-year period | Jobs growth in high-value industries up to 100,000 by 2033 |
| Goal 3 Regional household income levels to exceed Queensland household income levels | Household income levels were 22.3% below the State average | Household income levels 4.8% below the Queensland average | ✓ 17.5% reduction in income gap over the 11-year period | Regional household income levels to exceed Queensland household income levels by 2033 |
| Goal 4 Increase goods and services produced for export outside the region | 13.6% of goods and services were produced for export outside the region | 18.1% of goods and services were produced for export outside the region | ✓ 4.5% increase over the 11-year period | Increase goods and services produced for export outside the region up to 20% |

REDS Results



REDS Results



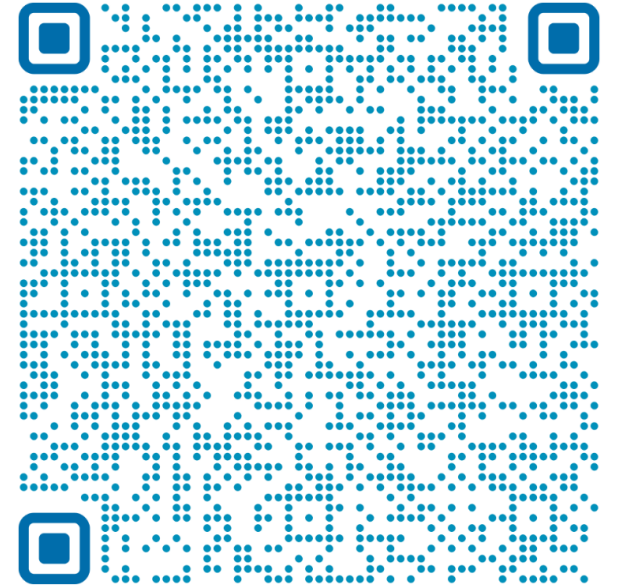
Programs and resources



5 tips to Level Up

1. Sign up to VendorPanel and build your profile.
2. Review your website and marketing collateral. Is it clear and does it highlight credibility?
3. Align your tender response and supply chain with government priorities.
4. Develop ESG based policies and action plans.
5. Engage alternate supplier pathways. ie Local Buy, ICN Gateway

LEVEL UP
YOUR BUSINESS



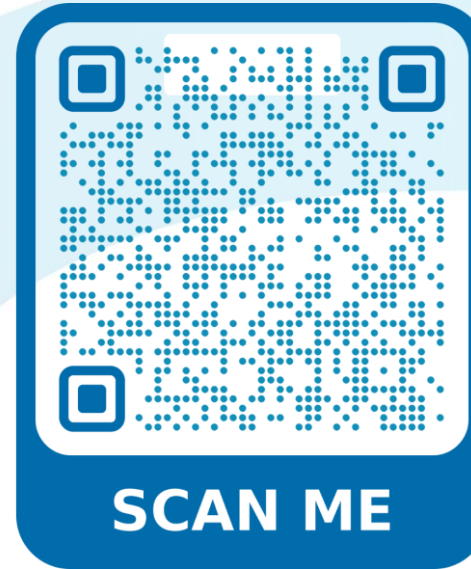
SCAN ME

Thriving Through Change

Wednesday 27 August, 3.15PM – 7.30PM

Maroochy RSL

- 35+ exhibitors from gov, industry and education
- Leaders masterclass
- Keynote – Kristina Karlson, Founder kikki.K
- Networking with the region's business community



Doing Business with Council workshop

Thursday 23 October, 7.30AM – 11.30AM

Community CoLab

EOI – businessdevelopment@sunshinecoast.qld.gov.au

A vertical promotional banner with a blue background. At the top left is a logo of a stylized plant with two leaves. To its right, the text "Thriving Through Change Expo" is displayed, with "Expo" in yellow. Below this, in smaller white text, is "Supporting your business resilience and growth". In the center is a circular portrait of Kristina Karlsson, a woman with blonde hair wearing a dark sleeveless top. To the right of the portrait, the word "Keynote" is in large white letters, followed by "Kristina Karlsson" in yellow. Below her name, in white text, is "Founder kikki.K and Dream Life.". At the bottom right, there is a yellow button with the text "Register now". At the very bottom right is the Sunshine Coast Council logo, which includes a stylized wave icon and the text "Sunshine Coast COUNCIL".

Thriving Through Change Expo
Supporting your business resilience and growth

Keynote
Kristina Karlsson
Founder kikki.K and Dream Life.

[Register now](#)

Sunshine Coast COUNCIL

Thank you

