

## Mooloolaba Foreshore Revitalisation Stage 1 Northern Parkland

Project number: B-4741

### New pedestrian crossing construction – Mooloolaba Esplanade Wednesday 23 November to Friday 9 December 2022

(All works weather and site conditions permitting)

Since opening in June 2022, the Northern Parkland has been enthusiastically embraced by our community.

The recent Mooloolaba Foreshore Festival on Saturday 5 November saw thousands of residents and visitors enjoy the new parkland and foreshore. The day included a jam-packed program of entertainment and events and special deals from local businesses.

Given the popularity of the parkland, council is implementing an additional safety measure and constructing a new, formalised pedestrian crossing, from the business side of Mooloolaba Esplanade to the beach side, directly adjacent to the southern entrance of the parkland.

While the current arrangement meets Australian road safety standards the new, lit crossing will deliver enhanced access for our community.

For safety reasons during construction of the crossing, the southbound lane of Mooloolaba Esplanade will be temporarily **closed** to vehicle traffic. The northbound lane will remain **open** with one way traffic in operation.

Please see Figure 2 on page 2 of this notice for further details.

These works have been timed to take place before the peak Christmas holiday season, thereby minimising potential impacts on adjacent businesses and residents.

Please continue to support local businesses during construction.



Figure 1 – locals and visitors enjoying the new Northern Parkland

#### Details of works

The project includes:

- A new pedestrian crossing
- Speed cushions on the road
- New lighting for the crossing
- New access ramps (for people with disability, prams, mobility scooters etc)
- Planting and irrigation adjustments.

Construction hours will primarily be between 6.00am and 6pm, Monday – Friday. No weekend works are expected to take place.

### Temporary changes to traffic conditions

From 6am – 6pm each day, the southbound lane of Mooloolaba Esplanade, from Venning Street to the Steve Irwin statue and Beach Terrace roundabout, will be temporarily **closed** to motorists. The northbound lane will remain **open** with one way traffic in operation.

Access to the Taxi Rank, Beach Terrace and Beach Terrace parking will remain available.

Detours will be in place during each day with normal traffic conditions resuming each evening and on weekends.

Pedestrians will be diverted onto alternative pathways where required.

### What to expect during these works

Medium level noise impacts can be expected with construction machinery and heavy vehicles in operation.

Jack hammers, crane trucks and vacuum trucks (trucks which ‘suck’ material from under the road or footpath) will be in use.

Works will include concrete cutting, concrete pouring, new kerb construction, the installation of light poles, new line marking and landscaping.

Every effort will be made to minimise construction impacts.

### Register to receive project updates

To subscribe to our regular construction updates, send your contact details to [mfr@sunshinecoast.qld.gov.au](mailto:mfr@sunshinecoast.qld.gov.au)

### Contact the project team

For any question about these works, contact Council’s customer service team on (07) 5475 7272 (Monday to Friday 8.15am-5pm) or email [mfr@sunshinecoast.qld.gov.au](mailto:mfr@sunshinecoast.qld.gov.au)

### NEWS FLASH!

In October 2022, the Northern Parkland was awarded the top accolade at one of Queensland’s most acclaimed industry awards programs, beating more than 50 projects. It won Project of the Year as well as the \$10 million to \$20 million projects category at the Institute of Public Works Engineering Australasia Queensland and Northern Territory (IPWEA) 2022 Excellence Awards.

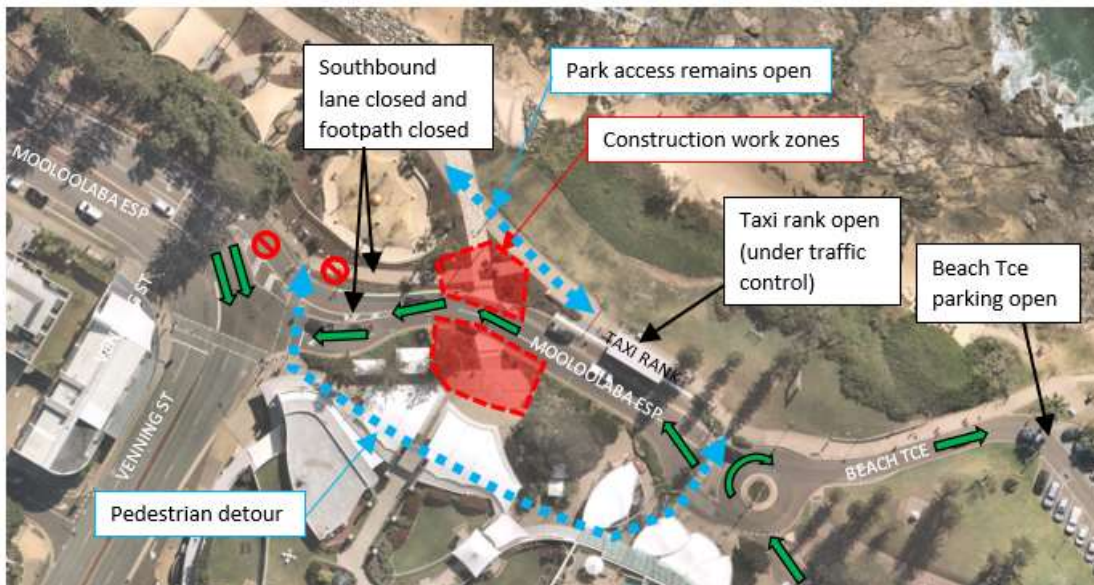


Figure 2. Construction area and temporary changes to traffic conditions, Mooloolaba Esplanade. Wednesday 23 November to Friday 9 December 2022 (weather and site conditions permitting)