

PROJECT SUMMARY

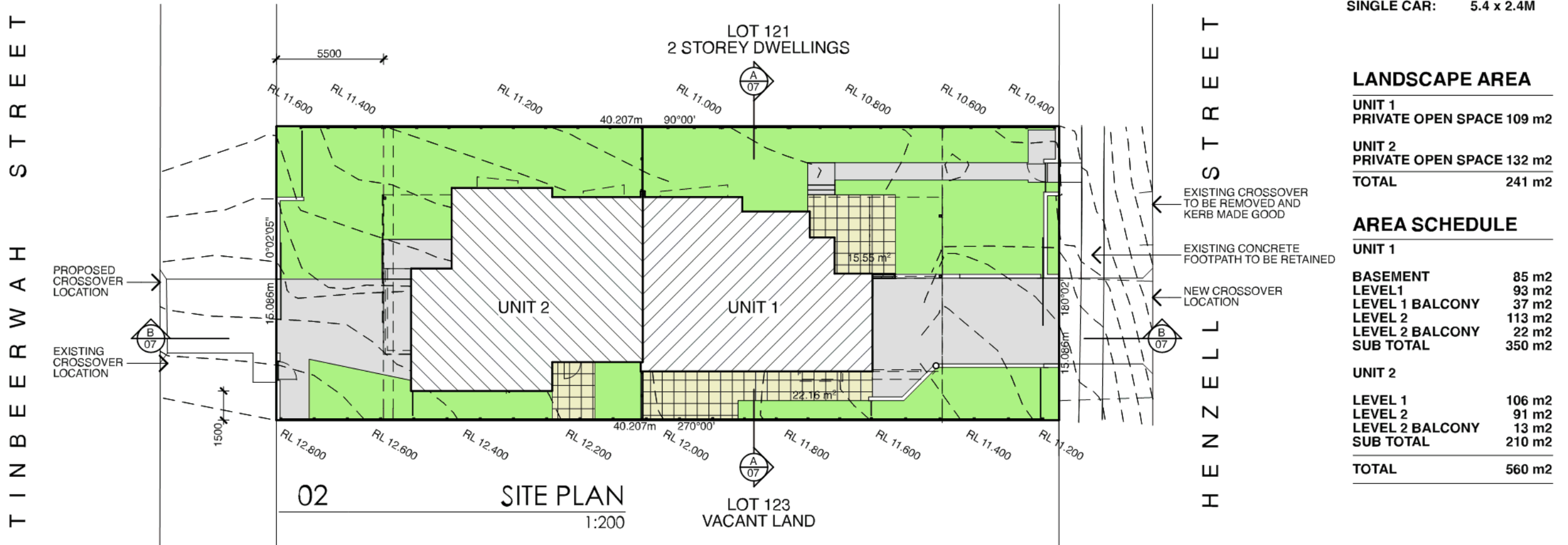
LOT 122 ON RP53611
 PARISH: MAROOCHY
 COUNTY: CANNING

SITE AREA 607m²

TOTAL NUMBER OF DWELLINGS	= 2
GROSS FLOOR AREA	= 199 + 204 = 352 m ²
SITE COVER	= 264 m ² or 43%
CARPARKING REQUIRED	= 2 x 3B x 1.75 = 3.5
CARPARKING PROVIDED	= 4
VISITOR CARS REQUIRED	= 2
VISITOR CARS PROVIDED	= 2
PROJECT CARPARKING REQUIRED	TOTAL = 6
PROJECT CARPARKING PROVIDED	TOTAL = 6
BICYCLE PARKING REQUIRED	= 2
BICYCLE PARKING PROVIDED	= 2

NOTE:

- ALL CARPARKING IN ACCORDANCE WITH AS2890.1
- ALL BICYCLE PARKS IN ACCORDANCE WITH AS 2890.3
- MINIMUM TYPICAL DIMENSIONS: ALL AISLES: 6.2M WIDE
 SINGLE CAR: 5.4 x 2.4M



**PROPOSED DUPLEX AT
 HENZELL STREET, DICKY BEACH**

ACECOL PTY LTD

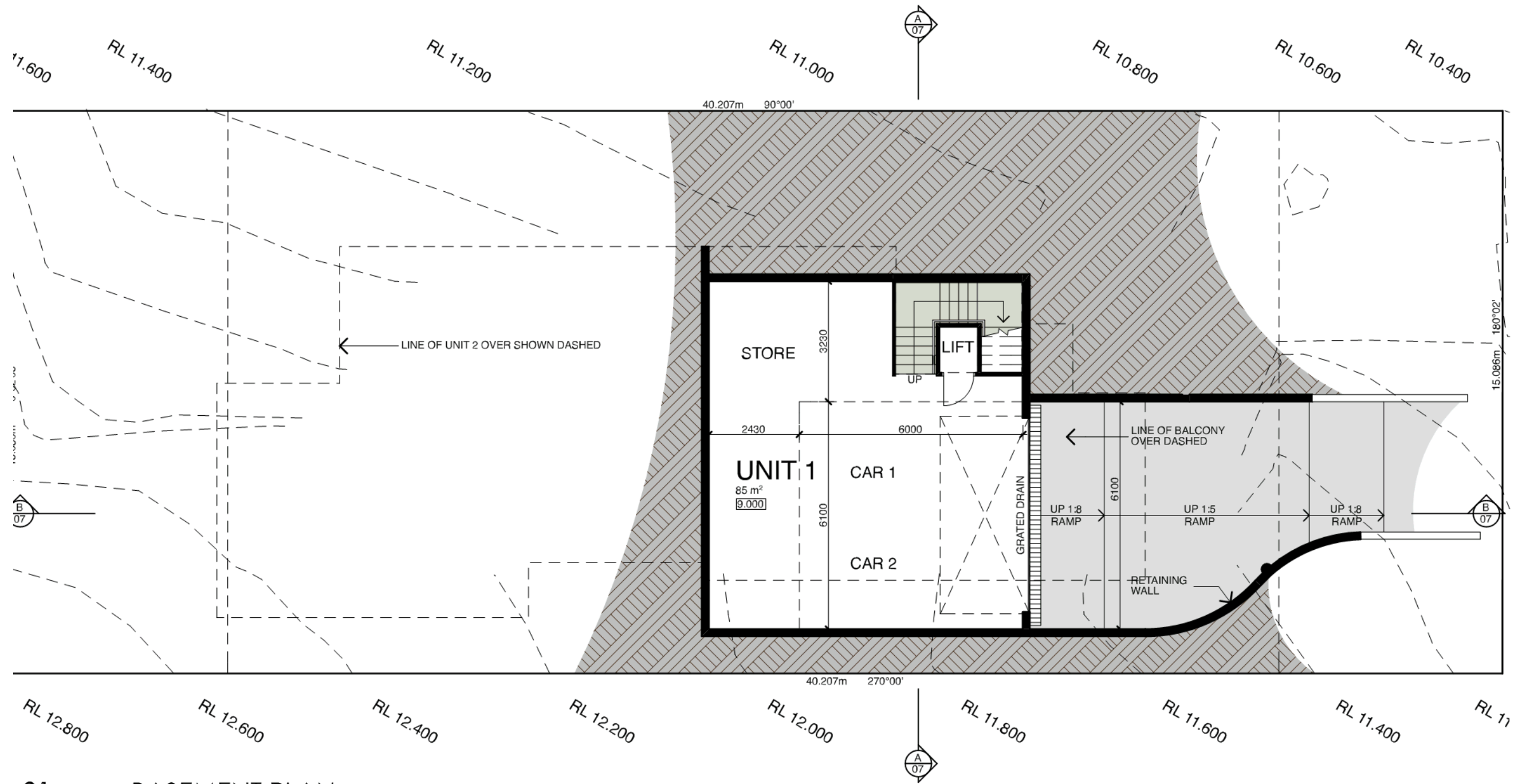
SITE PLAN

development approval
 scale: 1:200@A3
 issue: 05 date: 09.02.15
 7027/DA/01



Blackburne Jackson Design
 Architecture | Landscape | Interiors





01 BASEMENT PLAN
 1:100

PROPOSED DUPLEX AT HENZELL STREET
 DICKY BEACH

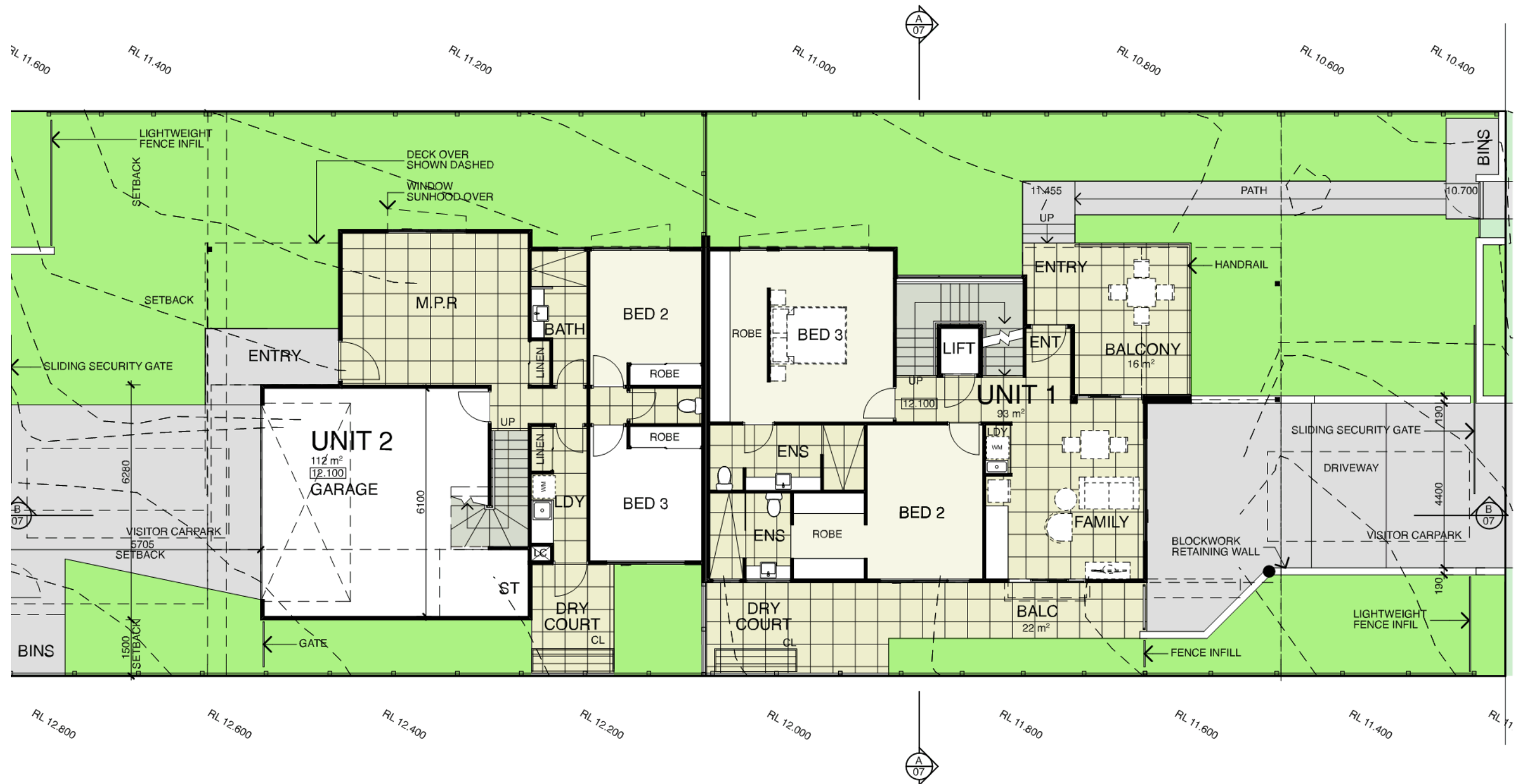
ACECOL PTY LTD
 FLOOR PLAN BASEMENT

development approval
 scale: 1:100@A3
 issue: 03 date: 21-10-15
 7027/DA/02



Blackburne Jackson Design
 Architecture | Landscape | Interiors





01 LEVEL 1 FLOOR PLAN
 1:100

PROPOSED DUPLEX AT
 HENZELL STREET, DICKY BEACH

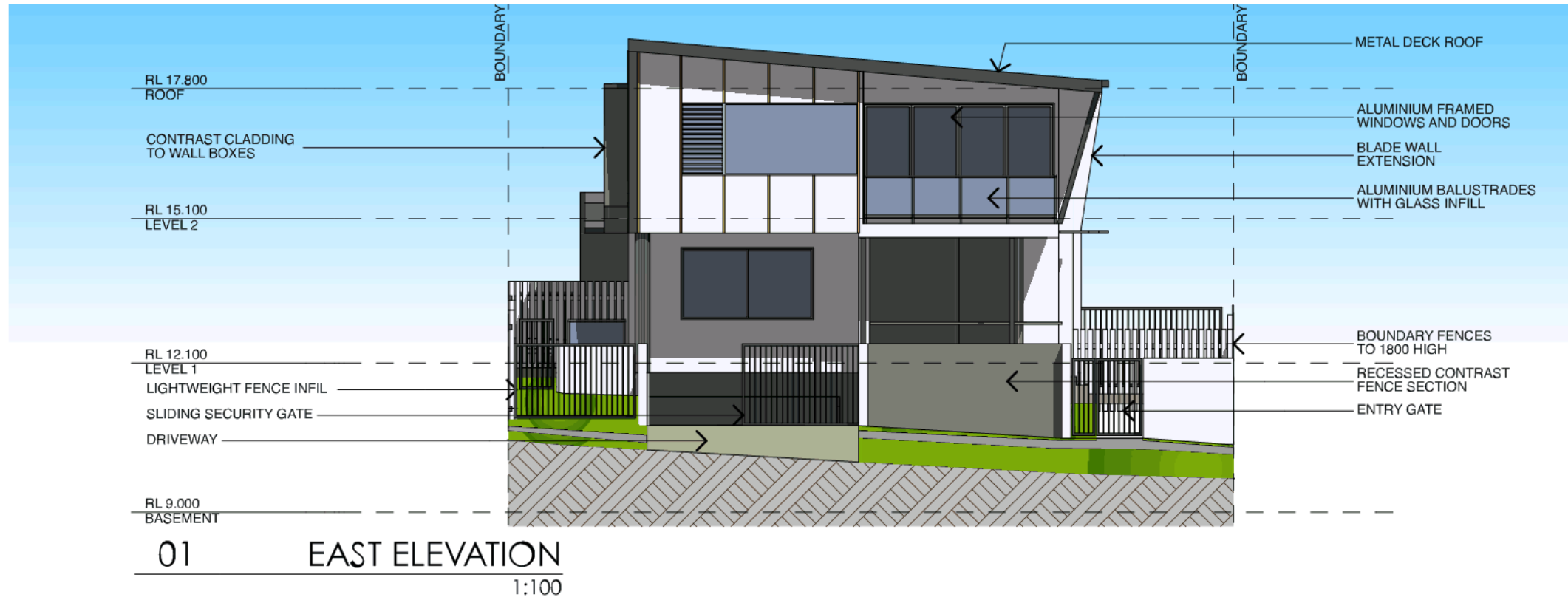
ACECOL PTY LTD
 FLOOR PLAN LEVEL 1

development approval
 scale: 1:100@A3
 issue: 05 date: 09.02.15
 7027/DA/03



Blackburne Jackson Design
 Architecture | Landscape | Interiors





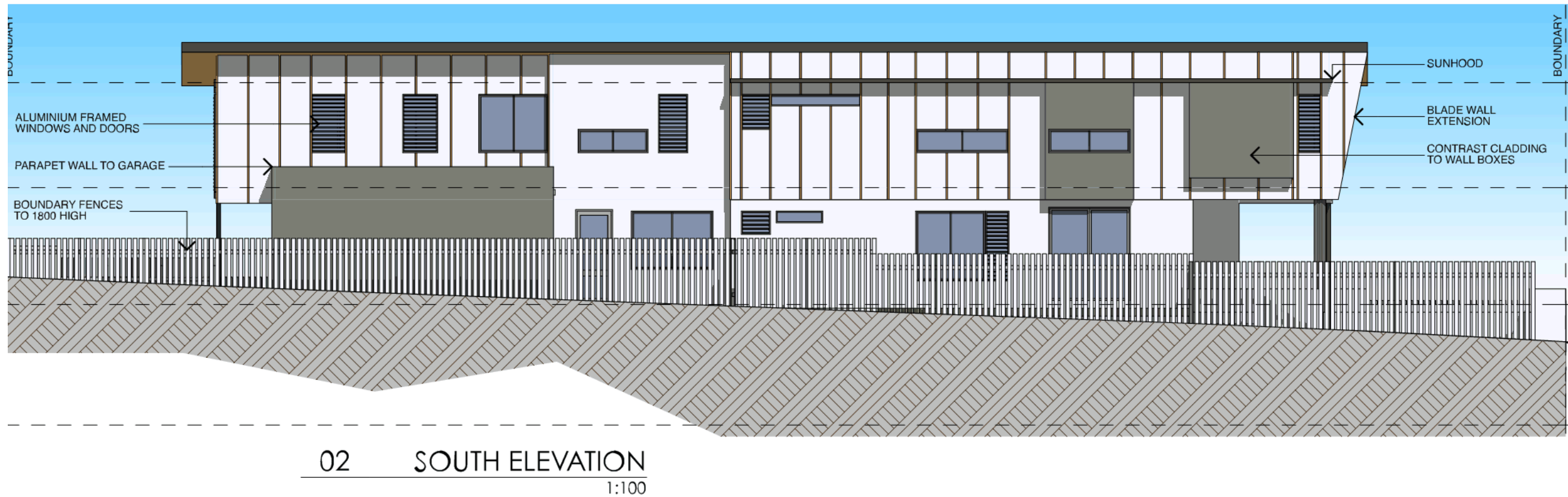
PROPOSED DUPLEX AT
 HENZELL STREET, DICKY BEACH

ACECOL PTY LTD
 ELEVATIONS

development approval
 scale: 1:100@A3
 issue: 05 date: 09-02-15
 7027/DA/05

Blackburne Jackson Design
 Architecture | Landscape | Interiors





PROPOSED DUPLEX AT
 HENZELL STREET, DICKY BEACH

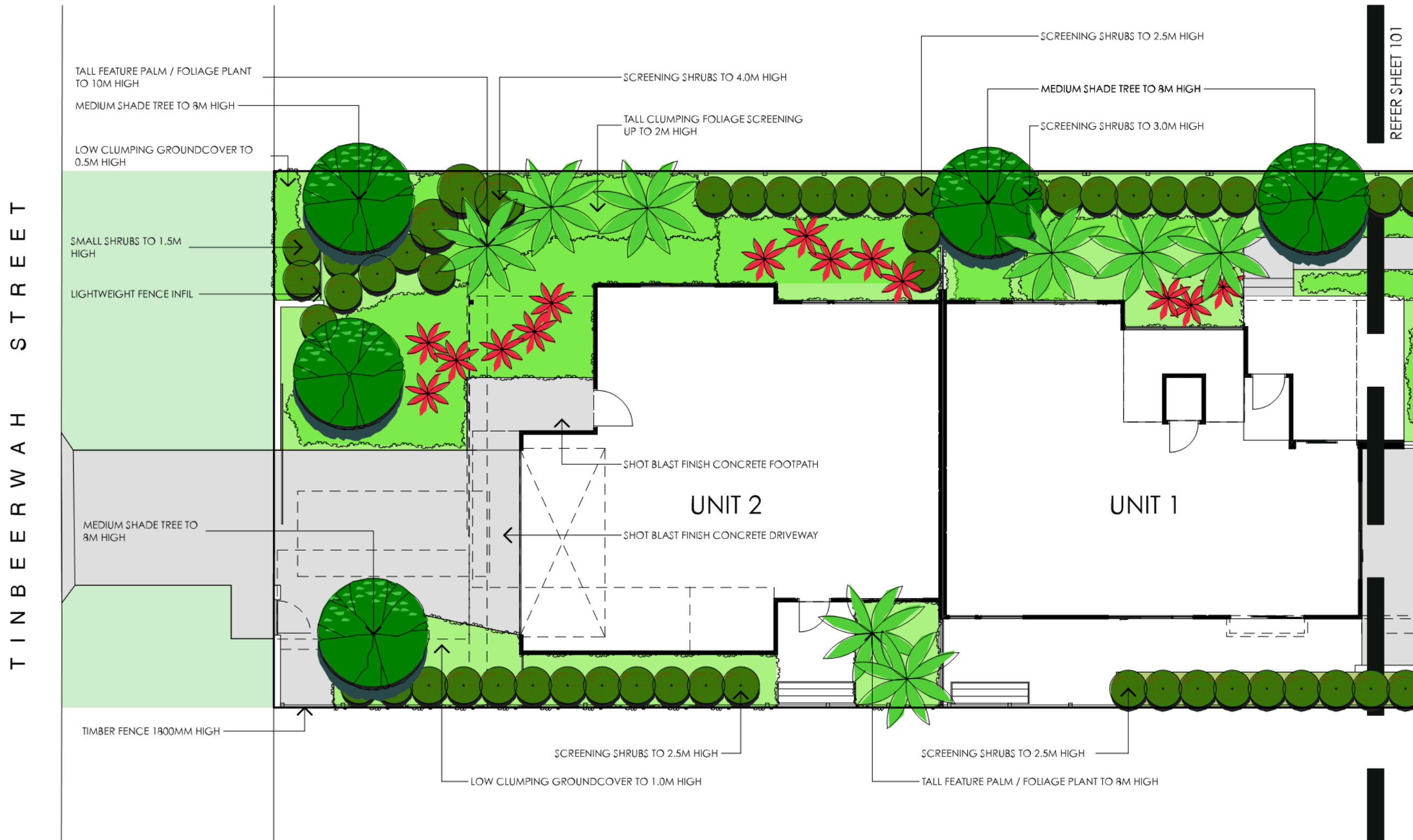
ACECOL PTY LTD

ELEVATIONS

development approval
 scale: 1:100@A3
 issue: 05 date: 09-02-15
 7027/DA/06

Blackburne Jackson Design
 Architecture | Landscape | Interiors





PROPOSED DUPLEX AT
 HENZELL STREET, DICKY BEACH

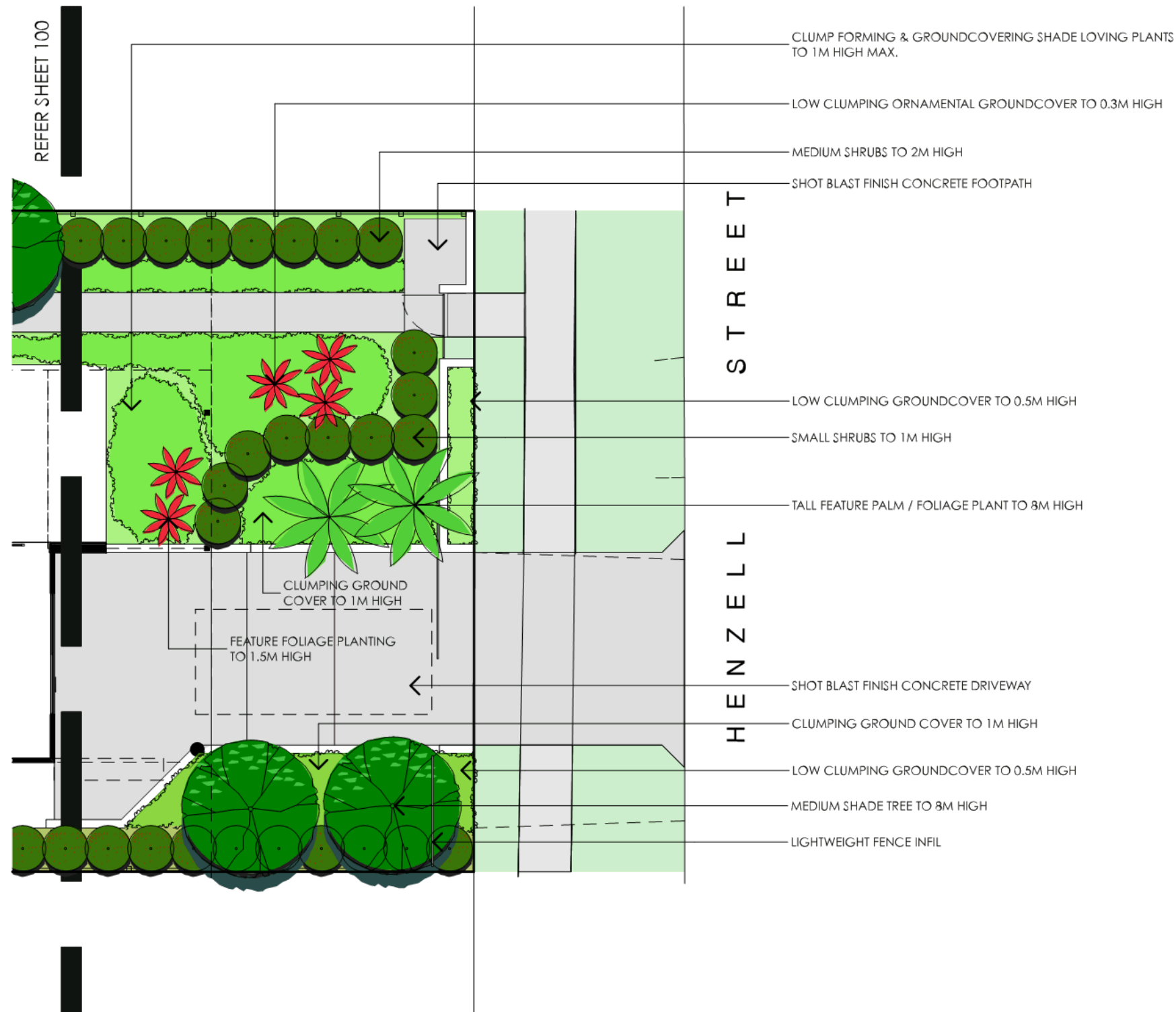
ACECOL PTY LTD
 LANDSCAPE PLAN

development approval
 scale: 1:100@A3
 issue: 01 date: 09-02-2016
 7027/DA/100



Blackburne Jackson Design
 Architecture | Landscape | Interiors





PROPOSED DUPLEX AT
 HENZELL STREET, DICKY BEACH

ACECOL PTY LTD

LANDSCAPE PLAN

development approval
 scale: 1:100@A3
 issue: 01 date: 09-02-2016
 7027/DA/101



TREE PLANTING



Acmena hemilampra
Bush Satinash



Cupaniopsis anacardioides
Tuckeroo



Elaeocarpus obovatus
Bluberry Ash

PALMS & TALL FOLIAGE PLANTS



Livistonia australis
Cabbage Tree Palm



Carpentaria acuminata
Carpentaria Palm



Cyathea cooperi
Tree Fern



Pandanus pendunculatus
Yucca Silver Star

MEDIUM SHRUB PLANTING



Dodonea viscosa
Sticky Hop Bush



Syzygium austale Hinterland Gold
Lilly Pilly Hinterland Gold



Westringia fruticosa
Native Rosemary

ACCENTS & SMALL FOLIAGE PLANTS



Cordyline stricta
Slender Palm Lily



Cordyline ptilolaris
Borad Leaved Palm Lily



Raphis excelsa
Bamboo Palm



Crinum pendunculatum
River Lily, Swamp Lily

SMALL SHRUBS (to 1m HIGH)



Acacia cognata Limelight
Acacia Limelight



Leucophyllum frutescens
Lavender Lights



Babingtonia virgata 'La Petite'
Petite Twiggly Heath Myrtle



Rahiopepis indica
Snow Maiden



Melaleuca linariifolia 'Claret Tops'
Claret Tops



Ixora Prince of Orange
Prince of Orange



Phyllanthus multiflorus
Waterfall Plant

CLUMPING GROUNDCOVERS



Lomandra confertifolia
Dwarf Mat Rush



Philodendron compacta xanadu
Philodendron Xanadu



Asplenium australasicum
Birds Nest Fern



Hymenocallis littoralis
Spider Lily



Tulbaghia violacea 'Silver Lace'
Society Garlic



Molineria capitulata
Palm Lily



Liriope Muscari Evergreen Giant
Evergreen Giant

PROPOSED DUPLEX AT
 HENZELL STREET, DICKY BEACH

ACECOL PTY LTD

PLANTING PALETTE IMAGES

development approval
 scale:
 issue: 01 date: 09-02-2016
 7027/DA/102

Blackburne Jackson Design
 Architecture | Landscape | Interiors

