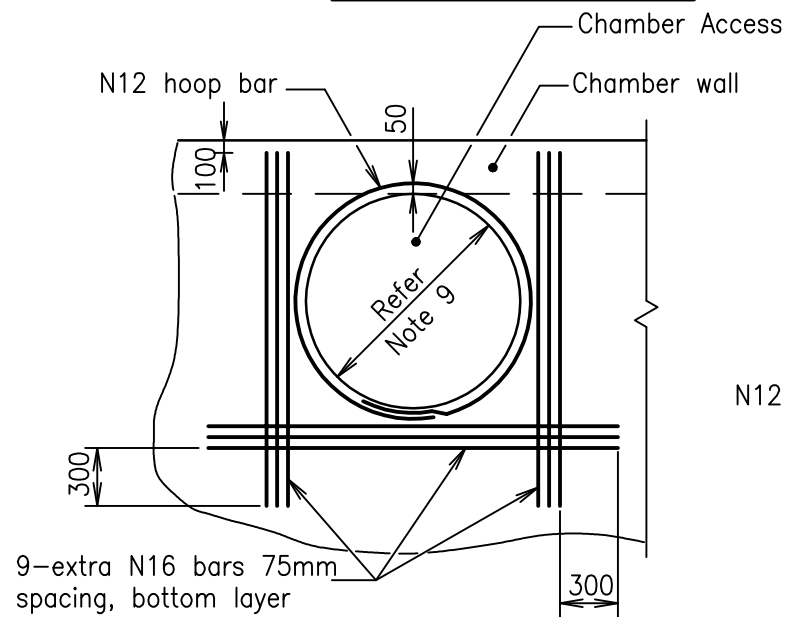


SHORT SPAN	LONG SPAN										SLAB DEPTH
	1200	1400	1600	1800	2000	2200	2400	2600	2800	3000	
1200	N12 AT 150	N16 AT 200	N16 AT 200	N16 AT 200	N16 AT 175	N16 AT 175	N16 AT 175	N16 AT 150	N16 AT 150	N16 AT 150	200
1400		N12 AT 150	N16 AT 200	N16 AT 200	N16 AT 175	N16 AT 175	N16 AT 150	N16 AT 150	N16 AT 150	N16 AT 150	200
1600			N12 AT 150	N16 AT 200	N16 AT 200	N16 AT 175	N16 AT 150	N16 AT 150	N16 AT 150	N16 AT 150	200
1800				N12 AT 150	N16 AT 200	N16 AT 200	N16 AT 200	N16 AT 175	N16 AT 175	N16 AT 175	225
2000					N12 AT 150	N16 AT 200	N16 AT 200	N16 AT 200	N16 AT 175	N16 AT 175	225
2200						N12 AT 150	N16 AT 200	N16 AT 200	N16 AT 175	N16 AT 175	225
2400							N16 AT 200	N16 AT 200	N16 AT 200	N16 AT 175	225
2600								N16 AT 200	N16 AT 200	N16 AT 175	250
2800									N16 AT 200	N16 AT 175	250
3000										N16 AT 175	250

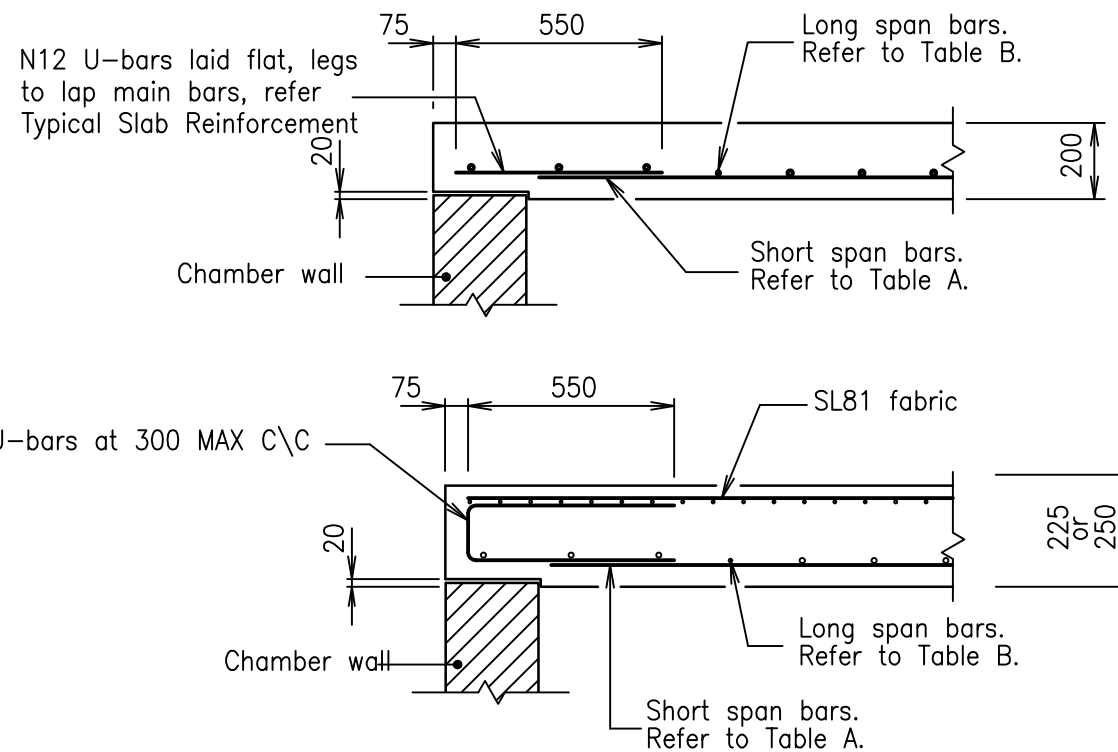
TABLE A : S BARS

SHORT SPAN	LONG SPAN										SLAB DEPTH
	1200	1400	1600	1800	2000	2200	2400	2600	2800	3000	
1200	N12 AT 150	N12 AT 200	N12 AT 200	N12 AT 200	N12 AT 200	N12 AT 200	N12 AT 200	N12 AT 200	N12 AT 200	N12 AT 200	200
1400		N12 AT 150	N12 AT 200	N12 AT 200	N12 AT 200	N12 AT 200	N12 AT 200	N12 AT 200	N12 AT 200	N12 AT 200	200
1600			N12 AT 150	N12 AT 150	N12 AT 200	N12 AT 200	N12 AT 200	N12 AT 200	N12 AT 200	N12 AT 200	200
1800				N12 AT 150	N12 AT 150	N12 AT 200	N12 AT 200	N12 AT 200	N12 AT 200	N12 AT 200	225
2000					N12 AT 150	N12 AT 150	N12 AT 200	N12 AT 200	N12 AT 200	N12 AT 200	225
2200						N12 AT 150	N12 AT 150	N12 AT 150	N12 AT 200	N12 AT 200	225
2400							N16 AT 200	N12 AT 150	N12 AT 150	N16 AT 150	225
2600								N16 AT 200	N16 AT 200	N16 AT 200	250
2800									N16 AT 200	N16 AT 200	250
3000										N16 AT 175	250

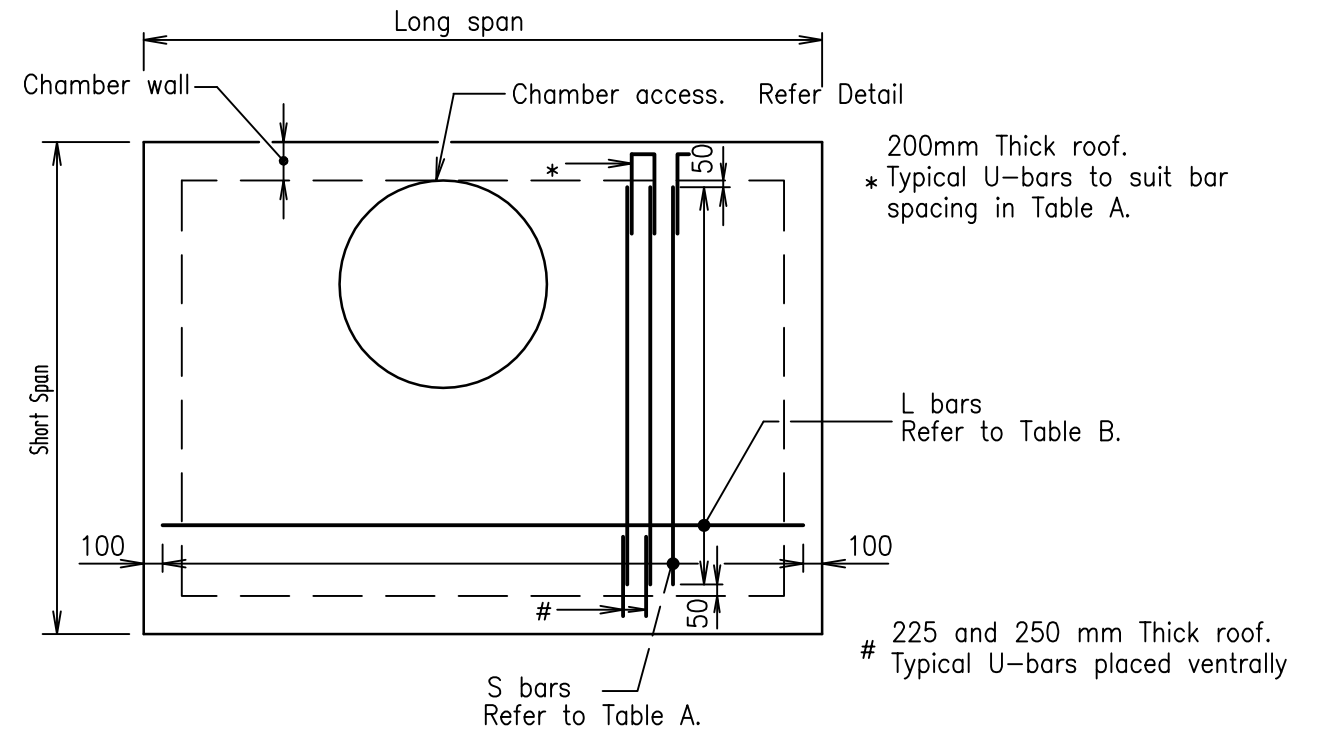
TABLE B : L BARS



SLAB REINFORCEMENT AROUND CHAMBER ACCESS



TYPICAL SECTIONS

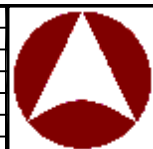


TYPICAL SLAB REINFORCEMENT

NOTES

- Concrete N32/20 in accordance with AS 1379 and AS 3600.
- Reinforcement :- SL81 Fabric to AS 1304
Bars N12 and N16, Grade 400 to AS 1302.
- All laps in reinforcement shall be :- Y12 - 300, Y16 - 400
- Formwork in accordance with AS 3610.
- Designed to Austroads Bridge Code, W7 wheel load, dynamic factor 0.4.
- Maximum fill over roof slab shall be 3000mm.
- Reinforcement cover 45 MIN.
- Refer project drawings for details of chamber walls and floors.
- For chamber access refer Standard Drawing DS-010.
- All dimensions in millimetres.

These drawings have been developed in consultation between the participating Councils.
BEFORE USE, the user shall confirm that the drawing has been adopted by the appropriate Council.



INSTITUTE OF PUBLIC WORKS ENGINEERING AUSTRALIA
QUEENSLAND DIVISION INC.
STANDARD DRAWINGS

ACCESS CHAMBER
ROOF SLAB - RECTANGULAR
STANDARD REINFORCEMENT

DS-013

A	10/12	ORIGINAL ISSUE
Rv.	DATE	REVISIONS

A
Rv.