

SCC SEMP
Beach Units

2014

0.25 0.125 0 0.25
Kilometers

Disclaimer
This work is done to ensure the accuracy of the product, neither the Sunshine Coast Council nor the State of Queensland makes any representations or warranties about its accuracy, reliability, completeness or suitability for any particular purpose and disclaims all responsibility and all liability (including without limitation, liability in negligence) for all expenses, losses, damages (including indirect or consequential damages) and costs that may occur as a result of the product being inaccurate or incomplete in any way or for any reason.

Contact: jnw
Last Printed: Wednesday, 4 June 2014



SCC SEMP
Beach Units

2014

0.035 0.0175 0 0.035
Kilometers

Disclaimer
This work is done to ensure the accuracy of the product, neither the Sunshine Coast Council nor the State of Queensland makes any representation or warranty about its accuracy, reliability, completeness or suitability for any particular purpose and disclaims all responsibility and all liability (including without limitation, liability in negligence) for all expenses, losses, damages (including indirect or consequential damages) and costs (including legal costs) in respect of the product being inaccurate or incomplete in any way or for any reason.

Contact: jnw
Last Printed: Wednesday, 4 June 2014



SCC SEMP
Beach Units

2014

0.06 0.03 0 0.06
Kilometers

Disclaimer
The Council of the Sunshine Coast makes no representation or warranty about the accuracy, reliability, completeness or suitability for any particular purpose and disclaims all responsibility for all liability (including without limitation, liability in negligence) for all expenses, losses, damages (including indirect or consequential damages) and costs (including legal costs) of the product being inaccurate or incomplete in any way or for any reason.

Contact: jnw
Last Printed: Wednesday, 4 June 2014

Shoreline Erosion Management Plan Mapped Values Beach Unit 18



SCC SEMP
Beach Units

2014

0.03 0.015 0 0.03
Kilometers

Disclaimer
The Council has taken all reasonable steps to ensure the accuracy of the product, neither the Sunshine Coast Council nor the State of Queensland makes any representation or warranty about its accuracy, reliability, completeness or suitability for any particular purpose and disclaims all responsibility and all liability (including without limitation, liability in negligence) for all expenses, losses, damages (including indirect or consequential damages) and costs that may be incurred as a result of the product being inaccurate or incomplete in any way or for any reason.

Contact: jnw
Last Printed: Wednesday, 4 June 2014



SCC SEMP
Beach Units

2014

0.05 0.025 0 0.05
Kilometers

Disclaimer
The Council has taken all reasonable steps to ensure the accuracy of the product, neither the Sunshine Coast Council nor the State of Queensland makes any representations or warranties about its accuracy, reliability, completeness or suitability for any particular purpose and disclaims all responsibility and all liability (including without limitation, liability in negligence) for all expenses, losses, damages (including indirect or consequential damages) and costs that may be incurred as a result of the product being inaccurate or incomplete in any way or for any reason.

Contact: jnw
Last Printed: Wednesday, 4 June 2014



SCC SEMP
Beach Units

2014

0.05 0.025 0 0.05
Kilometers

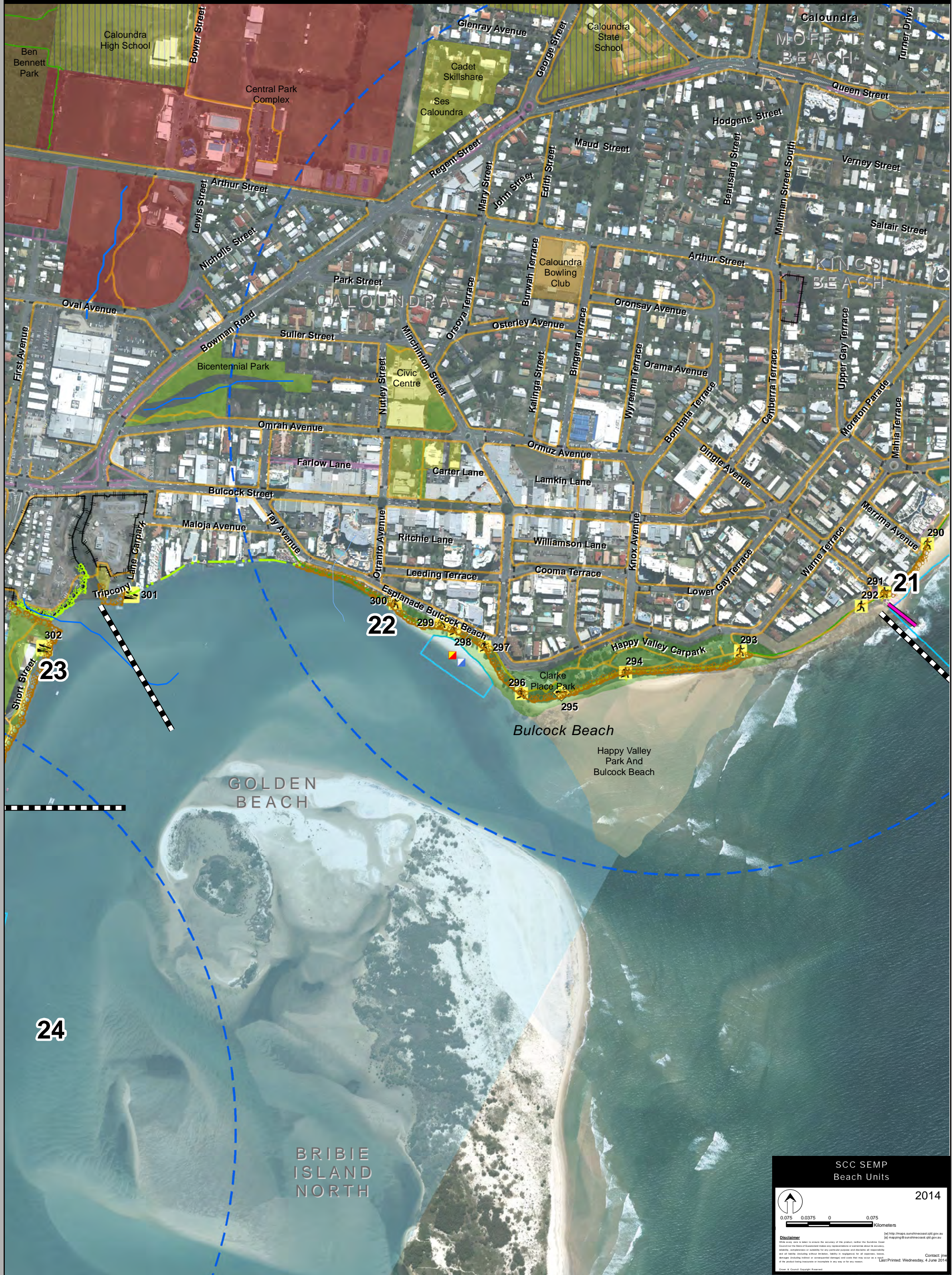
Disclaimer
The Council has taken all reasonable steps to ensure the accuracy of the product, but the Sunshine Coast Council and the State of Queensland make no representations or warranties about its accuracy, reliability, completeness or suitability for any particular purpose and disclaims all responsibility and all liability (including without limitation, liability in negligence) for all expenses, losses, damages (including indirect or consequential damages) and costs that may be incurred or a result of the product being inaccurate or incomplete in any way or for any reason.

Contact: jnw
Last Printed: Wednesday, 4 June 2014

21



Shoreline Erosion Management Plan Mapped Values Beach Unit 22



SCC SEMP
Beach Units

2014

0.075 0.0375 0 0.075
Kilometers

Disclaimer
The Council of the Sunshine Coast makes no representation or warranty about the accuracy, reliability, completeness or suitability for any particular purpose and disclaims all responsibility for all liability (including without limitation, liability in negligence) for all expenses, losses, damages, including indirect or consequential damages and costs that may be incurred as a result of the product being inaccurate or incomplete in any way or for any reason.

Contact: jnw
Last Printed: Wednesday, 4 June 2014



SCC SEMP
Beach Units

2014

0.02 0.01 0 0.02
Kilometers

Disclaimer
While every effort is made to ensure the accuracy of the product, neither the Sunshine Coast Council nor the State of Queensland makes any representations or warranties about its accuracy, reliability, completeness or suitability for any particular purpose and disclaims all responsibility and all liability (including without limitation, liability in negligence) for all expenses, losses, damages (including indirect or consequential damage) and costs that may be incurred as a result of the product being inaccurate or incomplete in any way or for any reason.

Contact: jnw
Last Printed: Wednesday, 4 June 2014



SCC SEMP
Beach Units

2014

0.045 0.0225 0 0.045
Kilometers

Disclaimer
The Council of the State of Queensland makes no representation or warranty about its accuracy, reliability, completeness or suitability for any particular purpose and disclaims all responsibility and all liability (including without limitation, liability in negligence) for all expenses, losses, damages (including indirect or consequential damages) and costs that may be incurred as a result of the product being inaccurate or incomplete in any way or for any reason.

Contact: jnw
Last Printed: Wednesday, 4 June 2014



SCC SEMP
Beach Units

2014

0.025 0.0125 0 0.025
Kilometers

Disclaimer
This work was done to ensure the accuracy of the product, neither the Sunshine Coast Council nor the State of Queensland makes any representations or warranties about its accuracy, reliability, completeness or suitability for any particular purpose and disclaims all responsibility and all liability (including without limitation, liability in negligence) for all expenses, losses, damages (including indirect or consequential damages) and costs that may occur as a result of the product being inaccurate or incomplete in any way or for any reason.

http://maps.sunshinecoast.qld.gov.au
mapping@sunshinecoast.qld.gov.au

Contact: jnw
Last Printed: Wednesday, 4 June 2014



BRIBIE
ISLAND
NORTH

SCC SEMP
Beach Units

2014

0.04 0.02 0 0.04
Kilometers

Disclaimer
This work was done to ensure the accuracy of the product, neither the Sunshine Coast Council nor the State of Queensland makes any representations or warranties about its accuracy, reliability, completeness or suitability for any particular purpose and disclaims all responsibility and all liability (including without limitation, liability in negligence) for all expenses, losses, damages (including indirect or consequential damages) and costs that may be incurred as a result of the product being inaccurate or incomplete in any way or for any reason.

Contact: jnw
Last Printed: Wednesday, 4 June 2014



26

27

28

BRIE ISLAND
NORTH

Bribie Island
National Park

COOCHIN
CREEK

SCC SEMP
Beach Units

2014

0.055 0.0275 0 0.055
Kilometers

Disclaimer
The Council of the Sunshine Coast makes no representation or warranty about its accuracy, reliability, completeness or suitability for any particular purpose and disclaims all responsibility and all liability (including without limitation, liability in negligence) for all expenses, losses, damages (including indirect or consequential damages) and costs that may be incurred as a result of the product being inaccurate or incomplete in any way or for any reason.

http://maps.sunshinecoast.qld.gov.au
http://mapping@sunshinecoast.qld.gov.au

Contact: jnw
Last Printed: Wednesday, 4 June 2014

Shoreline Erosion Management Plan Mapped Values Beach Unit 28



SCC SEMP
Beach Units

2014

0.55 0.275 0 0.55
Kilometers

Disclaimer
The Council has taken all reasonable steps to ensure the accuracy of the product, but the Sunshine Coast Council and the State of Queensland make no representations or warranties about its accuracy, reliability, completeness or suitability for any particular purpose and disclaims all responsibility and all liability (including without limitation, liability in negligence) for all expenses, losses, damages (including indirect or consequential damages) and costs that may be incurred as a result of the product being inaccurate or incomplete in any way or for any reason.

Contact: jnw
Last Printed: Wednesday, 4 June 2014