

Petrie Creek Road Upgrade - Rosemount



Construction update – Stage 2. Road, drainage and utility works



Stages 1 and 2 – July to late-November 2026. Day and night works



Petrie Creek Road – Western intersection with Paynters Creek Road to Eastern Service Road intersection. Detour in place via Paynters Creek Road, Rosemount



Changed traffic conditions - including single lane closures, traffic controllers and full road closures with detour in place.

About the project

Petrie Creek Road is being upgraded and widened for the safety of our community. The upgrade involves approximately 1.2 kilometres of works along Petrie Creek Road from the Paynters Creek Road intersection towards Sugar View Lane and includes:

- relocating and upgrading sections of the existing services
- major drainage (stormwater) upgrades
- road widening to include a dedicated cycle lane
- new asphalt (bitumen) and line marking.

Once the works are complete, the speed limit on Petrie Creek Road will be reduced from 80km to 70km p/hr.

To minimise impacts to our community including local businesses, works are taking place in stages over several months.

Construction activity will generally be undertaken as day works, from Monday to Friday, 7am to 5pm. Some night works will be required at times for safety reasons.

Works are dependent on favourable weather conditions.

Sunshine Coast Council has received funding from the South-East Queensland Community Stimulus Program to extend the dedicated cycle lane on Petrie Creek Road.

Project update

Further to our previous construction notifications this update focuses on Stage 1 and Stage 2 works. Council will provide further details about Stages 3 and 4 works over the coming months.

Information about the project can also be found on the project's web page (search for 'Sunshine Coast Council, Petrie Creek Road Upgrade'). We will continue to keep you informed.

Stage 1 – July 2026

Night works

From Sunday 5 July to Sunday 12 July

- Night works between 6pm and 3am
- Petrie Creek Road- Paynters Creek Road intersection.

Works include:

- Road excavation
- Placement of asphalt
- Line marking

What to expect:

- Construction machinery and vehicles will be in operation
- Intermittent noise impacts can be expected
- Two-way traffic access will remain along Petrie Creek Road and Paynters Creek Road. Traffic control will be in operation as required.

Stage 2 – July to late-November 2026

From Sunday 5 July to Sunday 12 July

- Day works from 7am to 5pm
- Two way traffic access remaining.

From Monday 13 July to late November

- Day works from Monday to Saturday, between 7am and 5pm.
- Petrie Creek Road, western intersection with Paynters Creek Road to Eastern Service Road intersection approx. 400m (refer to the red areas in figures 1 and 2 on page 3).
- Road closures and detours are in place. Please refer to the Stage 2 works area and access map on page 3 of this update.

Works include:

- Earthworks and stormwater drainage upgrades - including large stormwater culverts under the road surface
- Road widening works – including new asphalt (bitumen) and line marking including cyclist awareness symbols
- Vegetation clearing
- Embankment (batter) protection
- Retaining walls construction.

What to expect:

- Construction machinery and vehicles will be in operation
- Intermittent noise impacts can be expected.

Changed traffic and access conditions:

- A full road closure of this section of Petrie Creek Road is required from Monday 13 July (24/7 - day and night)
- Access will remain available to local residences and businesses via traffic controllers or via the Paynters Creek Road detour
- Access to homes and businesses located between the Service Road and the eastern intersection of Paynters Creek Road, will be from the eastern end of Petrie Creek Road only during Stage 2 works
- Extensive signage including electronic message boards will be in place to help motorists navigate the conditions including that local businesses remain open during works.

Contact us

For more information about this project, please visit our website, or call the customer contact team on 07 5475 7272 quoting Petrie Creek Road Upgrade project.

Please share this information with family, friends, staff and suppliers.

You can also contact the project team directly via email: petriecreekroadupgrade@sunshinecoast.qld.gov.au

We thank our community for your patience in advance as we undertake these important improvements to Petrie Creek Road.

All information contained in this communication is accurate at the time of distribution, however works and dates are subject to change due to circumstances outside of Sunshine Coast Council's control.

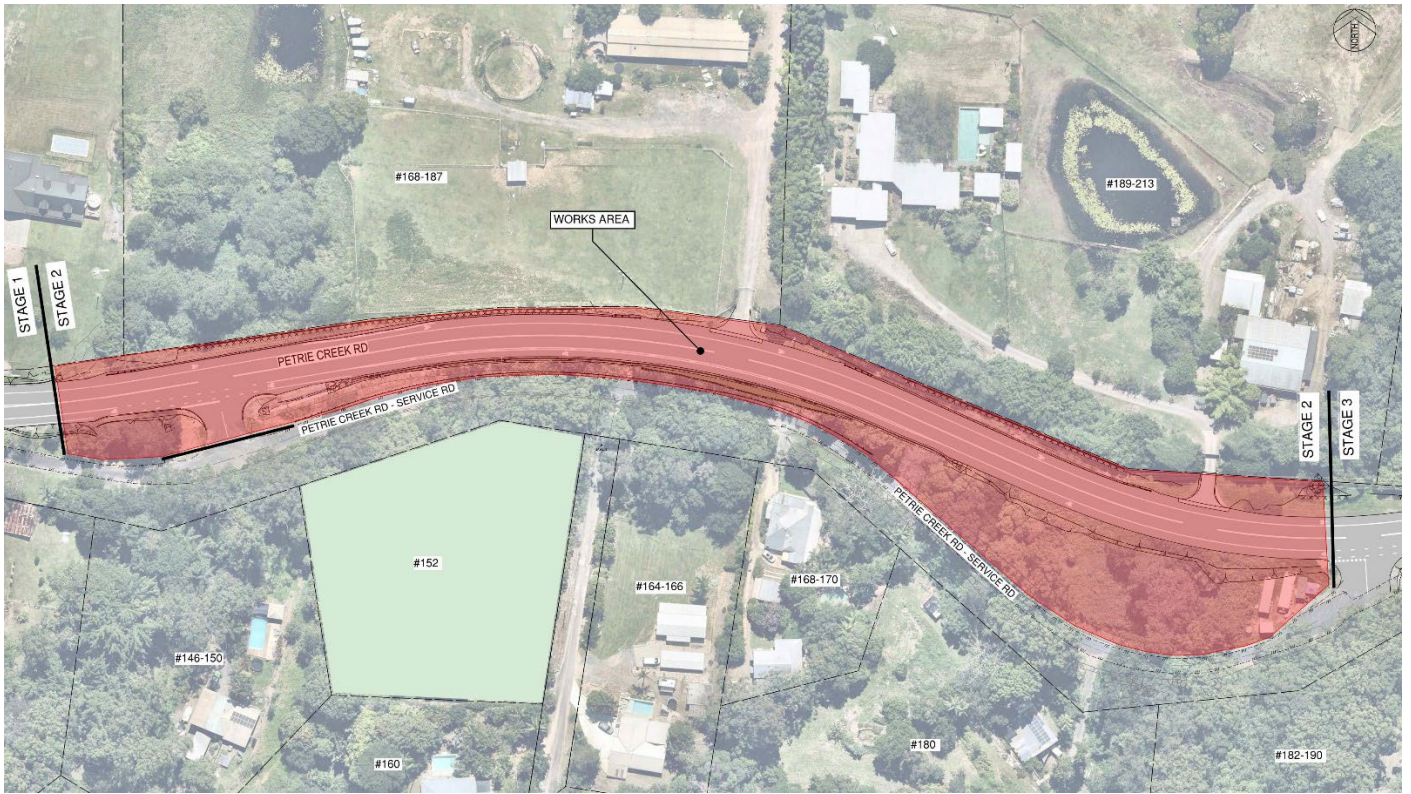


Figure 1 - Stage 2 works area - red section



Figure 2 - Stage 2 Petrie Creek access arrangements: Road closed (red section) to non-local traffic. Road open (green section) to all traffic Detour (blue section) via Paynters Creek Road.