

# Sunshine Coast Innovations Day 2019





**Diatomix**

The Future  
of  
Healthy W...

Large Fish

Algal Nutri...  
for m Regel...

**Diatomix**  
AlgalNutri

**Diatomix**  
AlgaEnviro

DR. DAVID  
TORRES

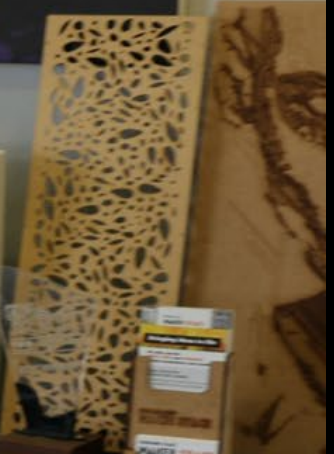


deep orange des

What did you  
im today

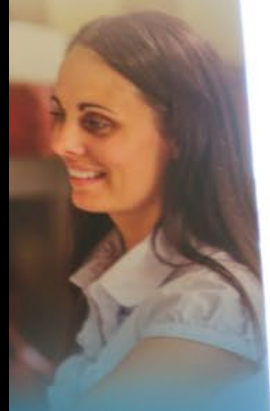


SUNSHINE COAST  
**MAKER SPACE**



gedes  
3 551  
m.au

eets



**ABILITY**  
**E-KEEPING**

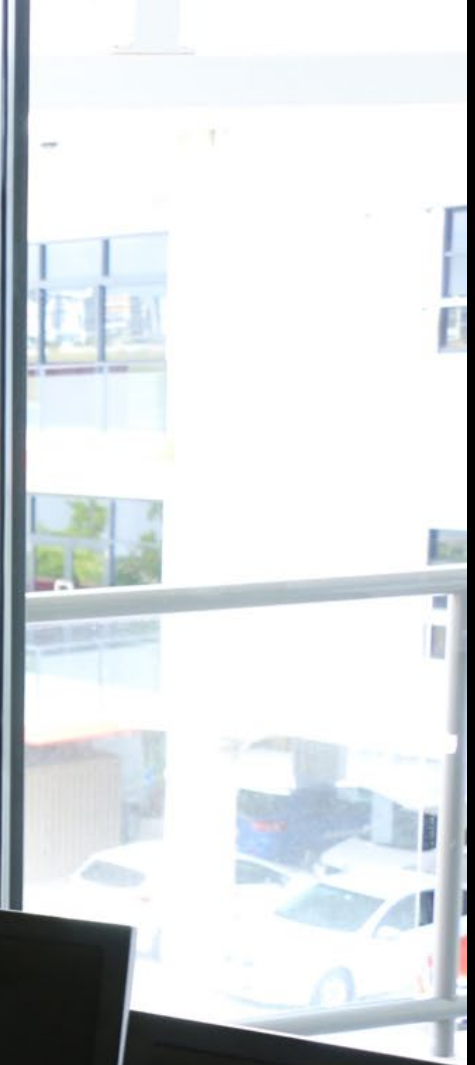
art and affordable  
ime tracking  
g payroll  
edge technolog  
ustralia-wide

**PLANET ARK**

**Power**

Cleaner energy  
Lower cost

[www.planetarkpower.com](http://www.planetarkpower.com)





 Aussie  
TimeSheets



## ACHIEVE ACCOUNTABILITY WITH YOUR TIME-KEEPING

-  Simple, smart and affordable
-  Accurate time tracking
-  Simplifying payroll
-  Cutting-edge technology
-  Sold Australia-wide



**systemax** TOM McILHATTON, MARTIN FRASER  
SYSTEMAX PTY LTD

# BUILDING SERVICES INTEGRATION & ANALYTICS

Integration

systemax







Systemax  
Data center  
empowers  
business  
growth  
There is a world  
of what  
you can do  
with the right  
data.

systemax  
Innovation in  
Data Center

ACHIEVE  
ACCOUNTABILITY  
with the right  
data.

WAYNE BENNETT  
PowerSafe  
**POWER  
SAFE  
PROTECT**



# Rubrik Data Visualisation

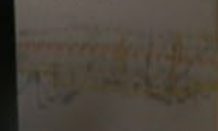
Storytelling with data

Data communication training for individuals and enterprises that want to **engage and influence**



Dip your toes in

There is a story in your data. But your tool doesn't know what it is. That's where it takes you. As an analyst or communicator of the information, you need to bring the story visually and contextually.



3D/4D Visualization  
Utility Location and Mapping (ULM)  
3D Earth Ground  
3D Utility Ground  
3D Utility Tunnel (UTM)  
3D Utility Road  
3D Utility Road  
3D Utility Road  
3D Utility Road

KILLS WEED & S  
BioWeed



**KILLS  
WEED & SEEDS**

**BioWeed**<sup>ULTRA</sup><sup>TM</sup>  
Certified Organic Herbicide



NICKY

CHRIS





### INVENTED THE "SMART PHONE" OF POWER ELECTRONICS

Model 1	Model 2	Model 3	Model 4
Power: 100W	Power: 200W	Power: 300W	Power: 400W
Price: \$1,000	Price: \$1,500	Price: \$2,000	Price: \$2,500

- The only company in the world that makes a 3-phase product
- One charging IP in standard and non-standard (2000) models
- Solved the grid voltage problem in real time at the highest rate on the grid by 100% (1.5 times)

www.cleantechindustries.com.au

**Cleantech INDUSTRIES**  
Sustainable Energy Solutions

Sunshine Coast  
CLEANTECH INDUSTRIES

W... Coast

**systemax**  
Independent Building Solutions

TOM McILHATTON, MARTIN FRASER  
SYSTEMAX PTY LTD



# BUILDING SERVICES INTEGRATION & ANALYTICS











 Sunshine Coast  
COUNCIL

[www.sunshinecoast.qld.gov.au](http://www.sunshinecoast.qld.gov.au)

MORNING  
TEA



Purposeful  
chart design

There is a story in your data. But your tools don't know what it is. That's where it takes you – the analyst or communicator of the information – to bring the story... contextually to life"

**Dip your toes in**

**\$400 off**  
Early-bird pricing

Next training date  
Storytelling with data  
26 March 2019  
Mooloolaba

Come along on **March 26** to evaluate whether the course is a good fit for your organisation

Use voucher code **IMMOSHOP**  
to access evaluation pricing of \$590 pp excl. GST (\$400 off)



Rubrik Data Visualisation

**Donuts & pies are for eating not charting!**



Donut charts should be used with caution. They are poorly suited for data comparison and are difficult to read. They are also difficult to use in presentations and are often used to distract from the data. They are also difficult to use in presentations and are often used to distract from the data.

Wanting sugar? Try a lollipop chart.




**Dip your toes in**

**\$400 off**  
Early-bird pricing

Next training date  
Storytelling with data  
26 March 2019  
Mooloolaba

Come along on **March 26** to evaluate whether the course is a good fit for your organisation

Use voucher code **IMMOSHOP**  
to access evaluation pricing of \$590 pp excl. GST (\$400 off)



Rubrik Data Visualisation

**Rubrik Data Visualisation**

**TIP - make your data the hero**

Feature highlights lead for your audience. Supporting charts, providing your audience with supporting context, and understanding the role of data.

**Prevention of accidental proliferation**



**Prevention:** Sub-significant features, special effects, reduction in color, reduced contrast, use of more colors.

**Prevention:** Contrast, font size, and use of color.

**Emphasize:** data point of interest

**Rubrik Data Visualisation**

**TIP - add context to enhance meaning**

Contextual information is essential for understanding the data. It provides the audience with the necessary background to understand the data and its implications.



**Context:** Add context to the data. Use of color, font size, and use of color.

**Emphasize:** data point of interest

**Rubrik** Data Visualisation



  
Parking  
made easy

Claudia  
Noranjo

NATALIE  
FIRTH

**KILL**  
**WEED & S**  
**BioWeed**  
Certified Organic

**Diatomix**  
The Future  
of  
Healthy Water









NATALIE  
D'ATH

**KILLS**  
**WEED & S**  
**BioWeedU**  
Certified Organic




sy






ACME CORP CARRIAGE  
Good morning! You can park in Bay B27 today.



SMARTER STAFF PARKING  
**Imagine a better start to your day**  
Find, access and pay in-app for smarter staff parking  
Streamline your commute direct to an available bay  
Get rewarded for sharing your allocated park (if you have one!)

Find out more!  
parkable.com/forbusiness




parkable

**How to park with Parkable**

- 1 Download the Parkable App
- 2 Tap on the pin and check available bays
- 3 Start Parking
- 4 Hit stop parking when you leave

Available on the App Store and Google Play

Download the app at [www.parkable.com](https://www.parkable.com)



ACME CORP  
Good morning  
park in Bay B




parkable



parkable

Parul Sawhney  
Senior Business Developer, UK

0121 221 1411  
parul.sawhney@parkable.com



[invest.sunshinecoast.qld.gov.au/innovation](https://invest.sunshinecoast.qld.gov.au/innovation)

