

Brisbane Road Car Park Redevelopment

Project update

Construction has reached a new milestone on what will be the new eight-storey multi-deck car park in Mooloolaba, with half the levels now built. Since October 2019, Evans Built has been busy constructing the foundations, in-ground services, ground floor slab and the building structure itself. With more than 700 parking spaces, a further 54 motorcycle spaces and 50 bicycle spaces the car park will make it easier for the community to access the beach, foreshore, shops, cafes and restaurants.

What's coming?

Construction remains on track for completion by December 2020, weather permitting. With the coronavirus (COVID-19) restrictions now progressively lifting stage by stage, it is imperative for council to keep construction on track to support Mooloolaba's economic recovery. This includes reinstating the original construction site footprint and returning the full extents of the car park (93 parking spaces) adjacent to Brisbane Road to the community from week commencing June 22.

Starting Tuesday June 23, concrete pours will no longer occur from the car park adjacent to Brisbane Road with all concrete pours now occurring from Smith Street. These regular concrete pours will occur until early October 2020, weather permitting.

Ever wondered how we build an eight-storey car park?

Take a look at our first construction video and keep an eye out for our next video which will give you an insight of the inside of the car park!

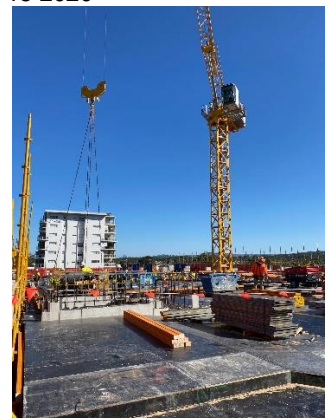
www.sunshinecoast.qld.gov.au/BRCP



Multi-deck car park, June 15 2020



Mezzanine level



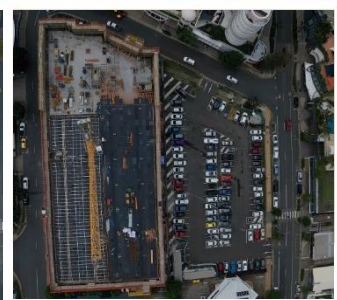
Level three

OCT 2019

JAN 2020

MAR 2020

JUN 2020



WHAT WILL BE THE VEHICLE CLEARANCE LIMIT?

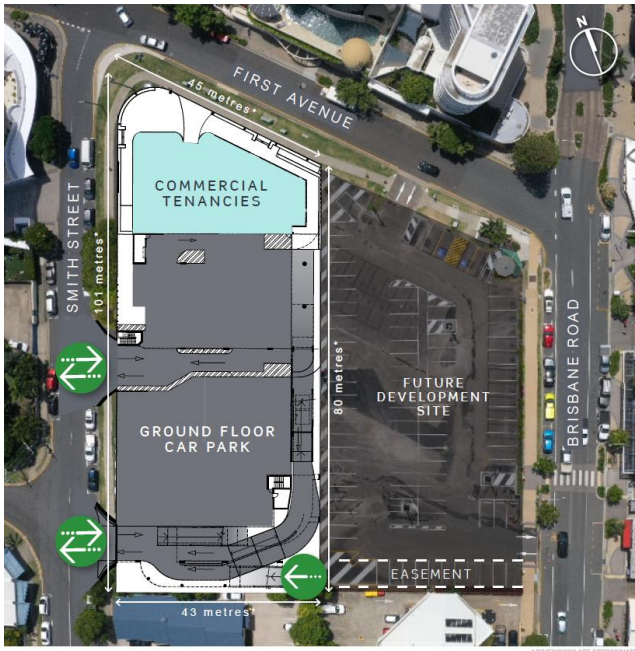
The maximum vehicle height limit will be 2.4 metres.

Will I be able to charge my electric vehicle?

Yes. You will find electric vehicle charging points on the mezzanine level, easily accessible from the Brisbane Road entry point.

FROM WHERE CAN I ENTER AND EXIT THE CAR PARK?

The new eight-storey car park will have entry and exit points from Smith Street and entry point from Brisbane Road.



*Dimensions are approximate.

How can I contact the project team?

If you have any questions on the Brisbane Road Car Park Redevelopment project, please contact council's customer service team on (07) 5475 7272 (during office hours, Monday to Friday 8.15am-5pm) or email brisbaneroadcarpark@sunshinecoast.qld.gov.au

Key features of the Brisbane Road Car Park Redevelopment

Eight-storey car park

.....

Over 700 parking spaces, with a further 54 motorcycle spaces and 50 bicycle spaces

.....

Ground floor retail outlets facing First Avenue

.....

Vehicle entries from Brisbane Road and Smith Street

A note from your local councillor

I am thrilled to work with the Brisbane Road Car Park project team to deliver this key infrastructure to improve public parking availability in Mooloolaba.

This project is vital to accommodate the growth in Mooloolaba and the broader Sunshine Coast, with Mooloolaba attracting an ever-increasing number of visitors both locally and from other destinations.

I thank you in advance for your patience and understanding during the construction of this vital community infrastructure.

If you want to learn more about the project visit the project's webpage www.sunshinecoast.qld.gov.au/BRCP



Cr Joe Natoli – Division 4