

27 May 2016

J000196-004-L-Rev0

Yolanda Burt
Transport and Infrastructure Policy
Regional Strategy and Planning
Sunshine Coast Council

Email: Yolanda.burt@sunshinecoast.qld.gov.au

**MONTHLY GROUNDWATER MONITORING – INFILTRATION BASIN
EARNSHAW STREET, GOLDEN BEACH**

Dear Yolanda,

Core Consultants Pty Ltd (Core) is pleased to present the results of the first round of monthly groundwater level monitoring at the above site. Groundwater levels are continually monitored via a LevelTROLL installed in the groundwater monitoring well within the infiltration basin.

The second round of data download was undertaken on the 11 May 2016 and the raw data was then processed to develop hydrographs depicting groundwater level fluctuations against tidal movements and rainfall events for the past month.

The hydrographs, showing comparisons of groundwater level fluctuations against tidal ranges and rainfall are attached.

Your attention is drawn to the document Limitations, which is attached to this letter. Should you require any further information, please contact the under signed on (07) 5475 5900.

Yours sincerely,

CORE CONSULTANTS PTY LTD



Lyndon Gordon BSc(EnvScience) CEnvP
Senior Environmental Scientist

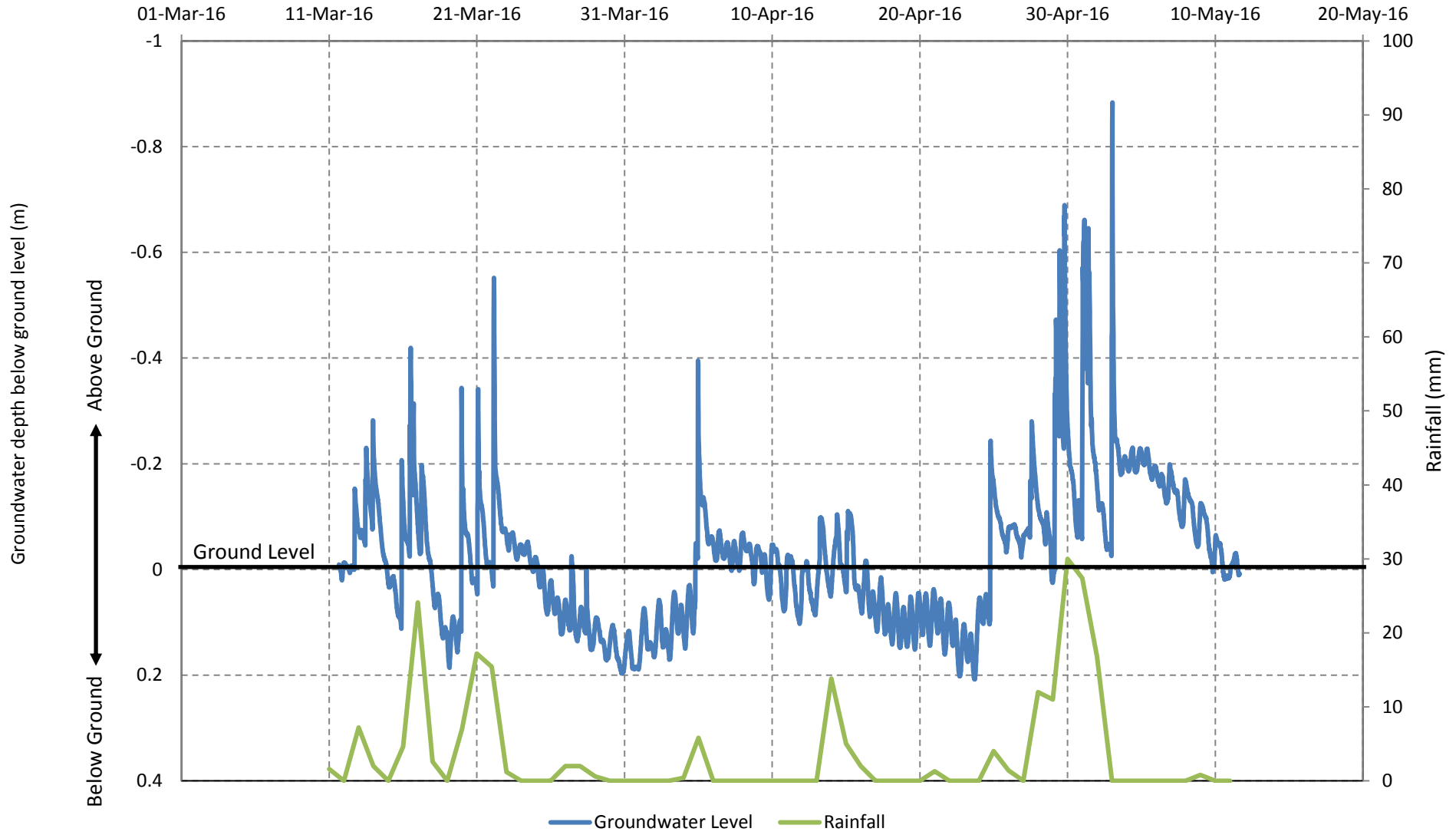
LG/JM/Ig

Attachments: Hydrographs
Limitations

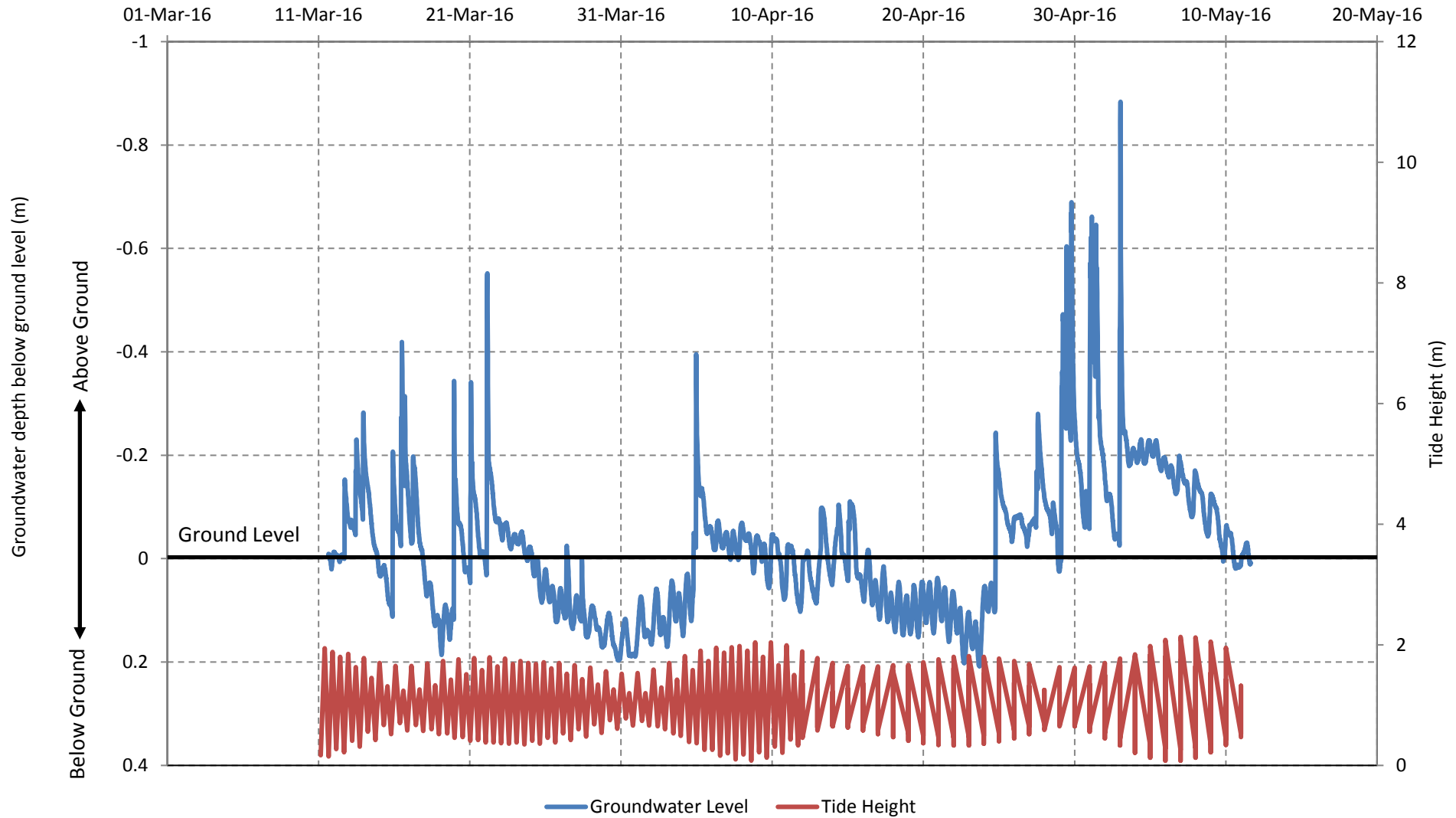


Josh Mitchell BSc. MEIANZ CPSS2 CEnvP
Associate

Hydrograph for Infiltration Basin (Rainfall)



Hydrograph for Infiltration Basin (Tidal)



LIMITATIONS

This Document has been provided by Core Consultants Pty Ltd ("Core") subject to the following limitations:

This Document has been prepared for the particular purpose outlined in Core's proposal and no responsibility is accepted for the use of this Document, in whole or in part, in other contexts or for any other purpose.

The scope and the period of Core's Services are as described in Core's proposal, and are subject to restrictions and limitations. Core did not perform a complete assessment of all possible conditions or circumstances that may exist at the site referenced in the Document. If a service is not expressly indicated, do not assume it has been provided. If a matter is not addressed, do not assume that any determination has been made by Core in regards to it.

Conditions may exist which were undetectable given the limited nature of the enquiry Core was retained to undertake with respect to the site. Variations in conditions may occur between investigatory locations, and there may be special conditions pertaining to the site which have not been revealed by the investigation and which have not therefore been taken into account in the Document. Accordingly, additional studies and actions may be required.

In addition, it is recognised that the passage of time affects the information and assessment provided in this Document. Core's opinions are based upon information that existed at the time of the production of the Document. It is understood that the Services provided allowed Core to form no more than an opinion of the actual conditions of the site at the time the site was visited and cannot be used to assess the effect of any subsequent changes in the quality of the site, or its surroundings, or any laws or regulations.

Any assessments made in this Document are based on the conditions indicated from published sources and the investigation described. No warranty is included, either express or implied, that the actual conditions will conform exactly to the assessments contained in this Document.

Where data supplied by the client or other external sources, including previous site investigation data, have been used, it has been assumed that the information is correct unless otherwise stated. No responsibility is accepted by Core for incomplete or inaccurate data supplied by others.

Core may have retained subconsultants affiliated with Core to provide Services for the benefit of Core. To the maximum extent allowed by law, the Client acknowledges and agrees it will not have any direct legal recourse to, and waives any claim, demand, or cause of action against, Core's affiliated companies, and their employees, officers and directors.

This Document is provided for sole use by the Client and is confidential to it and its professional advisers. No responsibility whatsoever for the contents of this Document will be accepted to any person other than the Client. Any use which a third party makes of this Document, or any reliance on or decisions to be made based on it, is the responsibility of such third parties. Core accepts no responsibility for damages, if any, suffered by any third party as a result of decisions made or actions based on this Document.