



Sippy Downs Parks Master Plan

Part B: Park Plans - Albany Lakes District Park

September 2018



Albany Lakes District Park (Albany Lakes Park, Edgewater Park and Tower Park)



Map 4: Chancellor Lakes Park Network Plan (Not to Scale)

2 Albany Lakes Park (Cape Lane)

- Lakeside pedestrian paths
- Shaded seating areas

1 Albany Lakes Park (Claymore Road)

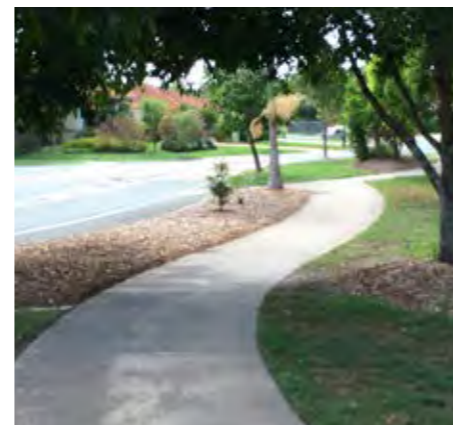
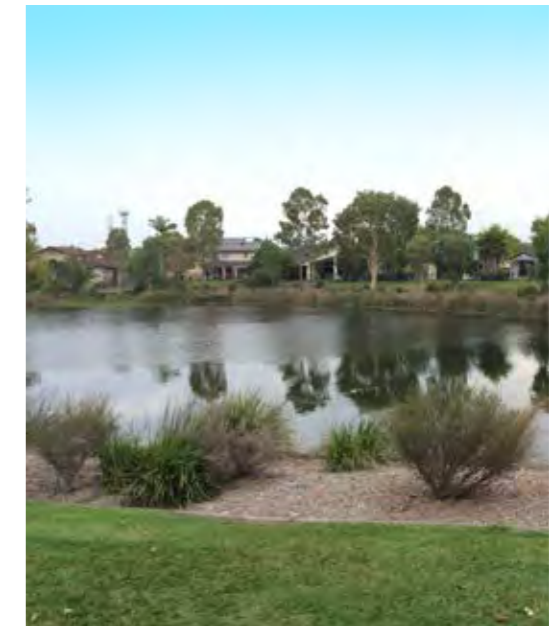
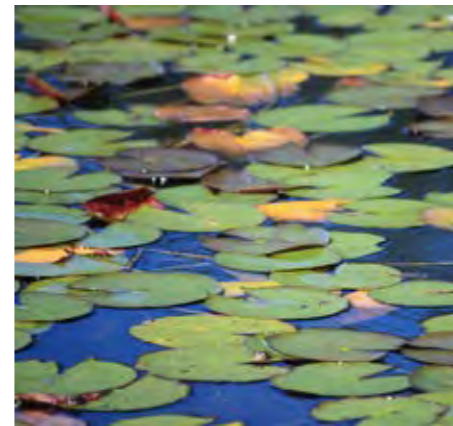
- Footpaths (on street)
- Lakeside lookout point
- Car parking
- Canoe launch
- Park name sign/entry marker
- Park map signs
- Tree planting



1 Albany Lakes Park - Claymore Road (District park)

Plan actions

- 1.1 Pedestrian path (Albany Street)
- 1.2 Pedestrian path (Fitzwilliam Drive)
- 1.3 Car parking (on-street)
- 1.4 Timber pedestrian bridge
- 1.5 Park seat
- 1.6 Lakeside lookout point
- 1.7 Park entry marker
- 1.8 Lakeside circuit path map
- 1.9 Park name sign
- 1.10 Park name sign
- 1.11 Supplementary tree planting
- 1.12 Water access / canoe launch
- 1.13 Supplementary tree planting
- 1.14 Seat removal (relocate)
- 1.15 Install (relocate) park seat
- 1.17 Car parking (off-street)
- 2.1 Vegetation management
- 2.2 Painting park and landscape furniture
- 2.3 Wall cleaning and repairs



Legend

- 1.1 Short Term Development (1-5 years)
- 1.1 Medium Term Development (5-10 years)
- 1.1 Long Term Development (10+ years)
- 2.1 Maintenance Action





Artist illustration - **Albany Lakes Park (District Park) - Claymore Road**



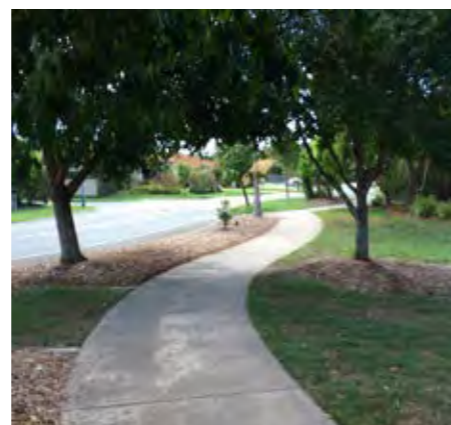
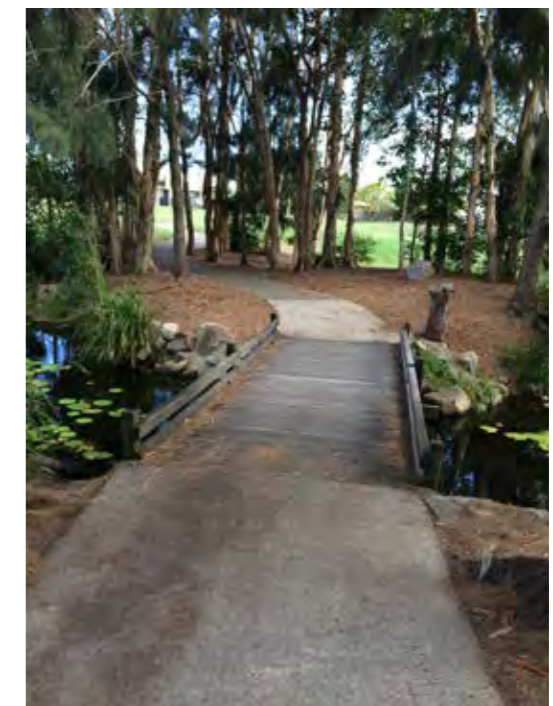
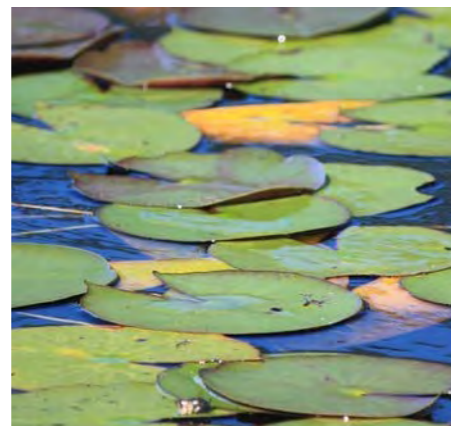
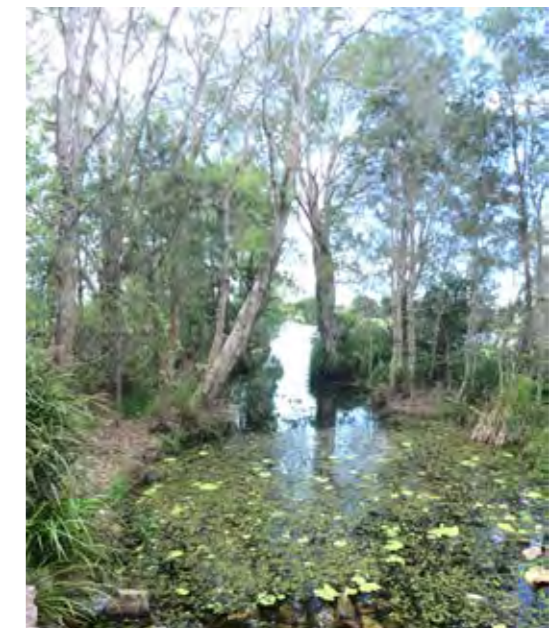
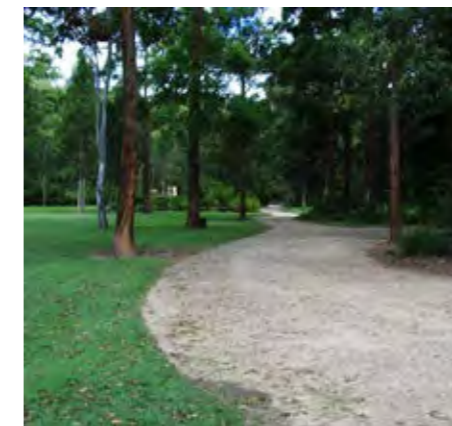
Artist illustration - **Albany Lakes Park (District Park) - Claymore Road**

2 Albany Lakes Park - Cape Lane (District park)

Plan actions

- 1.1 Park seat
- 1.2 Park seat
- 1.3 Lakeside pedestrian path
- 1.4 Pedestrian bridge / culvert
- 1.5 Lakeside pedestrian path
- 1.6 Lakeside pedestrian path
- 1.7 Supplementary tree planting
- 1.8 Park seat
- 2.1 Tree grate removal
- 2.2 Painting park and landscape furniture
- 2.3 Balustrade repair
- 2.4 Bridge repair and maintenance
- 2.5 Erosion repair and bank stabilisation
- 2.6 BBQ removal*
- 2.7 Remove electrical supply and switchboard*
- 2.8 Painting seating shelter
- 2.9 Remove BBQ shelter*
- 2.10 Remove exercise station*
- 2.11 Remove sign posts

* Subject to review of use and community consultation at the end of the assets life



Legend

- 1.1 Short Term Development (1-5 years)
- 1.1 Medium Term Development (5-10 years)
- 1.1 Long Term Development (10+ years)
- 2.1 Maintenance Action



3 Albany Lakes Park - Albany Street (District park)

Plan actions

- 1.1 Playground (district level)
- 1.2 Playground shelters (x2)
- 1.3 Park seat (x3)
- 1.4 Table and seat (x2)
- 1.5 Large group picnic shelter
- 1.6 BBQ and shelter
- 1.7 Electrical supply
- 1.8 Excavation and removal of earth mound
- 1.9 Multi-purpose court
- 1.10 Disabled car parking bays
- 1.11 Park name and entry marker
- 1.12 Park name sign (x2)
- 1.13 Fitness station upgrade
- 1.14 Drinking fountain
- 1.15 Play space boardwalk
- 1.16 Nature walk pedestrian path
- 1.17 Pedestrian bridge / culvert
- 1.18 Supplementary tree planting
- 1.19 Pathway and car park lighting
- 1.20 Toilet block
- 1.21 Pedestrian path link
- 1.22 Car parking (on-street)
- 1.23 Car parking (on-street)
- 1.24 Car parking (on-street)
- 1.25 Lakeside pedestrian path
- 1.26 Large group picnic shelter (east)
- 2.1 Shrub and groundcover planting
- 2.2 Bollard / barrier repair and maintenance
- 2.3 Balustrade repair



Legend

- 1.1 Short Term Development (1-5 years)
- 1.1 Medium Term Development (5-10 years)
- 1.1 Long Term Development (10+ years)
- 2.1 Maintenance Action





Artist illustration - **Albany Lakes Park (District Park) - Albany Street**

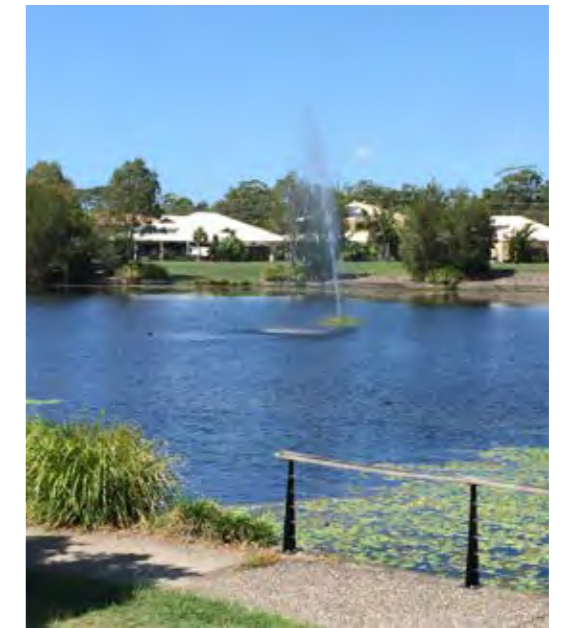
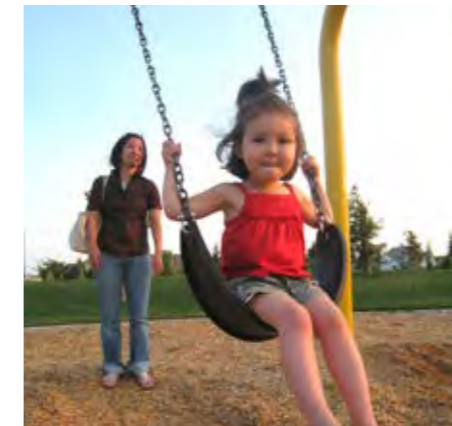


Artist illustration - Albany Lakes Park (District Park) - Albany Street

4 Edgewater Lakes Park (District park)

Plan actions

- 1.1 Table and seat
- 1.2 Park seat (x2)
- 1.3 Pathway drainage
- 1.4 Playground (local)
- 1.5 Relocate shelter
- 1.6 Footpath (Oak Grove Way)
- 1.7 Lakeside pedestrian path
- 1.8 Car parking (on-street)
- 2.1 Lakeside balustrade repair
- 2.2 Bollard realignment and straightening
- 2.3 Painting shelter and park landscape furniture
- 2.4 Vegetation management and site clean-up
- 2.5 Vegetation management



Legend

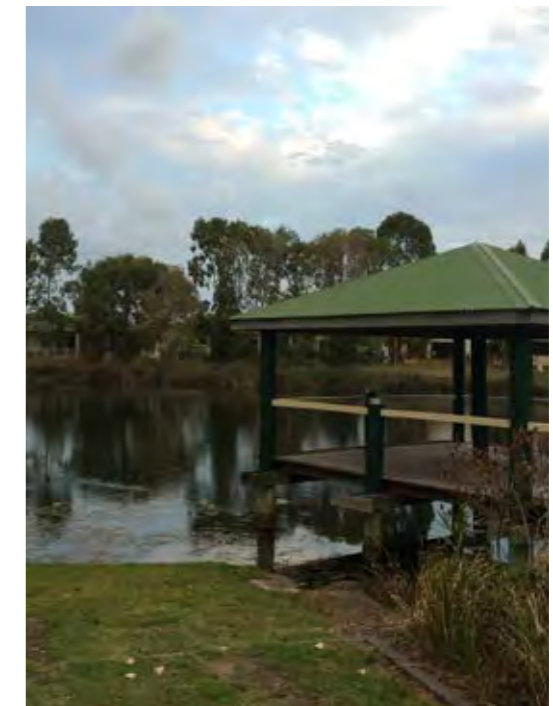
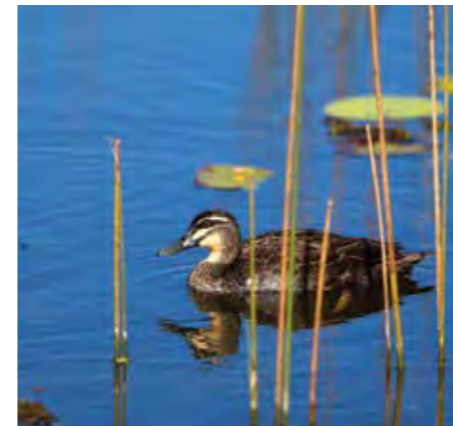
- 1.1 Short Term Development (1-5 years)
- 1.1 Medium Term Development (5-10 years)
- 1.1 Long Term Development (10+ years)
- 2.1 Maintenance Action



5 Tower Park (District park)

Plan actions

- 1.1 Park seat
- 1.2 Park name sign
- 1.3 Shelter seating
- 1.4 Exercise station map signs
- 1.5 Exercise station upgrade and soft-fall
- 1.6 Pathway lighting
- 2.1 Drainage to pathway
- 2.2 Vegetation management and site clean-up
- 2.3 Artwork cleaning and repairs



Legend

- 1.1 Short Term Development (1-5 years)
- 1.1 Medium Term Development (5-10 years)
- 1.1 Long Term Development (10+ years)
- 2.1 Maintenance Action





www.sunshinecoast.qld.gov.au

mail@sunshinecoast.qld.gov.au

T 07 5475 7272 F 07 5475 7277

Locked Bag 72 Sunshine Coast Mail Centre Qld 4560