



Item 8.3

Stormwater Management Strategy

Purpose

The purpose of this report is to seek adoption of the Sunshine Coast Council Stormwater Management Strategy.

Introduction

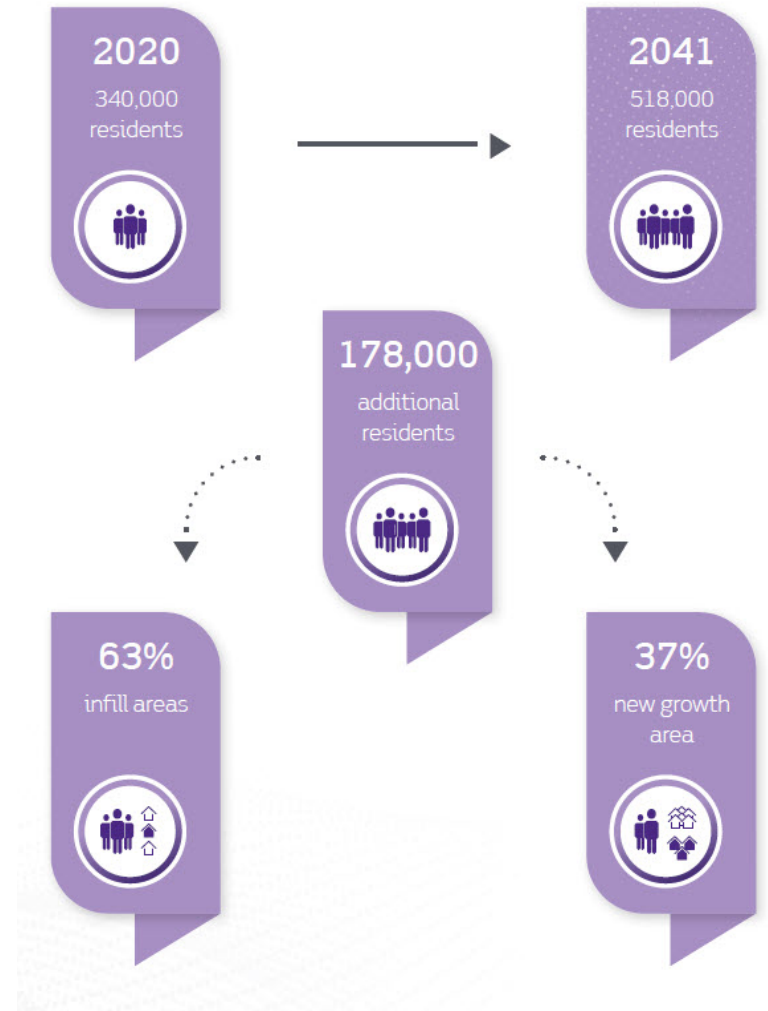
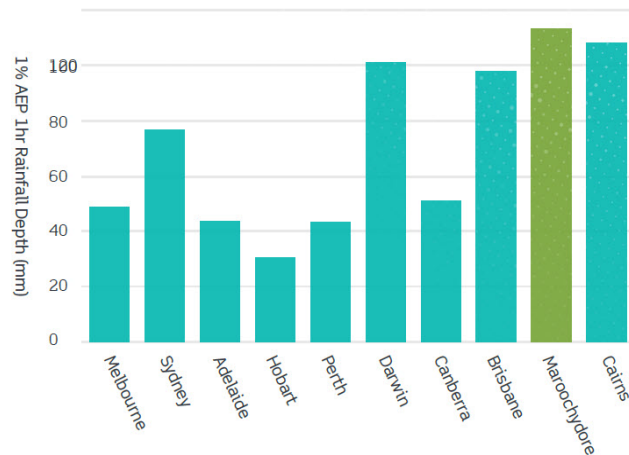
- What is stormwater management?
- What is a Stormwater Management Strategy?



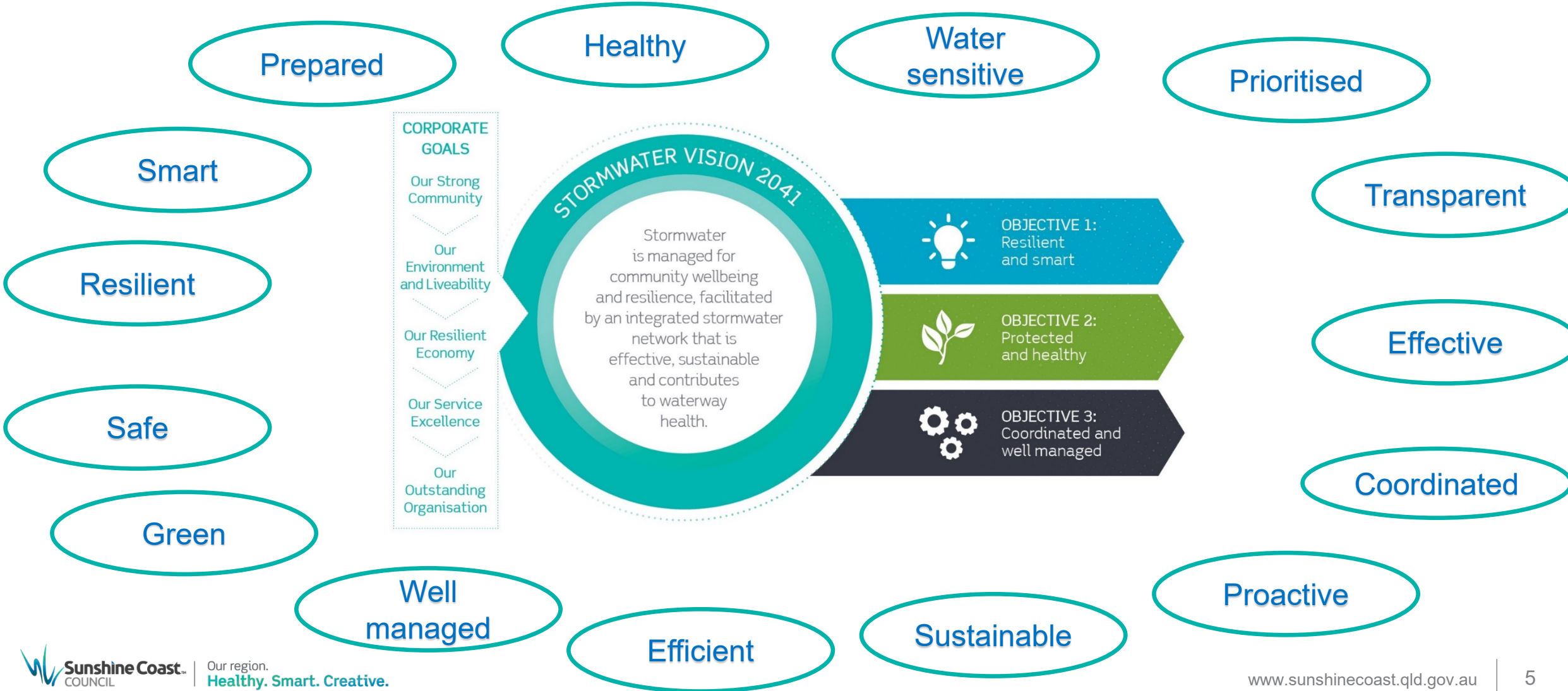
Why a Stormwater Management Strategy is needed

- Actively prepare for growth
- Build resilience to climate change
- Growing and diverse asset class, complex to manage
- Stormwater management has changed significantly
- Meet the needs and expectations of existing and future communities
- Framework and direction
- Stormwater management will be critical to achieving vision of being: **“Australia’s most sustainable region: Healthy. Smart. Creative”**

Australian Government Bureau of Meteorology,
2016 IFD Design Rainfall



Stormwater Management Vision



Preparation

- Background paper
- Drafting
- Internal review
- External (peer) consultation
- Workshops and briefings
- Community consultation
- Finalisation



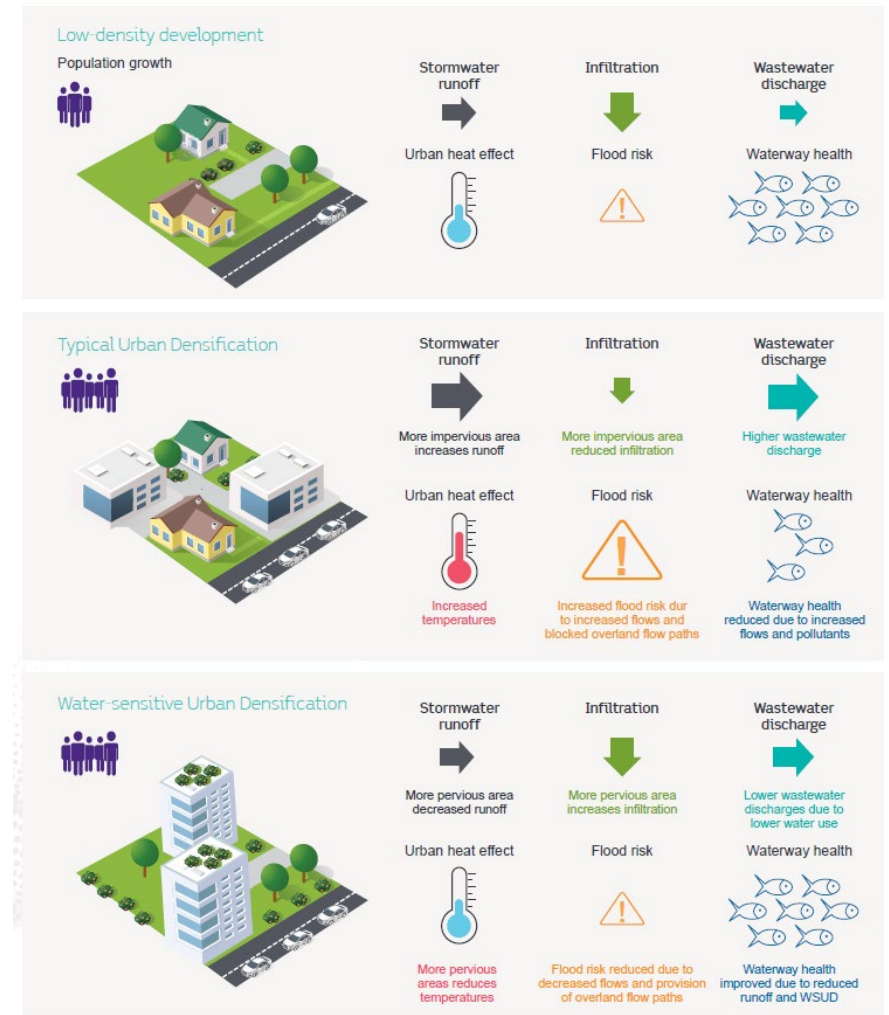
Community Consultation

- Have Your Say survey, emails and targeted briefings
- 106 survey responses, 14 emails
- Overall very supportive
- Healthy waterways consistently the top priority
- Community education topics
- Top topics raised
 - Maintenance
 - Stormwater and rainwater harvesting
 - Standards of service
 - Increased development
 - Water quality, stormwater treatment
 - Planning laws and development assessment
 - Overland flow and drainage concerns
 - Compliance and auditing
 - Floodplain preservation



Changes to Draft Strategy following Consultation

- Slight changes to key objectives, strategic directions and policy positions
- Water sensitive urban densification
- Additional information on:
 - rainwater tanks
 - prioritisation of works
 - urban stormwater risks
- Floodplain storage clarification
- Detailed action revisions relating to:
 - maintenance and compliance
 - litter management
 - customer experience



Strategy Content

Summary

Part A

- Sunshine Coast context
- Challenges and opportunities
- Roles and responsibilities
- Goals, vision and objectives
- Strategic directions
- Policy positions

Part B (subject to regular updates)

- Council's stormwater roles and responsibilities
- Detailed actions
- Desired Standards of Service

Resilient and smart

Our Strong Community	Our Environment and Liveability	Our Resilient Economy	Our Service Excellence	Our Outstanding Organisation
<p align="center">Stormwater Vision 2041</p> <p align="center">Stormwater is managed for community wellbeing and resilience, facilitated by an integrated stormwater network that is effective, sustainable and contributes to waterway health.</p>				

<p align="center">Objective 1: Resilient and smart</p> <p align="center">Wellbeing and resilience are enhanced by increased stormwater awareness, clever planning and good design</p>	<p align="center">Objective 2: Protected and healthy</p> <p align="center">Stormwater management protects the natural and built environment and supports healthy communities and ecosystems</p>	<p align="center">Objective 3: Coordinated and well managed</p> <p align="center">Stormwater assets are effective and responsive to a changing environment</p>
--	--	---

Strategic directions		
1.1 Understanding stormwater flood risk and stormwater network performance	2.1 Effective stormwater treatment and water quality management	3.1 Coordinated management and maintenance of stormwater assets
1.2 Strategic identification and designation of land and assets	2.2 An informed and engaged community and industry	3.2 Sustainable levels and standards of service that are fit for purpose
1.3 Sustainable, smart and functional design	2.3 Compliance and accountability	3.3 Improved asset management and knowledge of stormwater assets
		3.4 Prioritised and coordinated delivery of works
Policy positions	Policy positions	Policy positions
Detailed actions	Detailed actions	Detailed actions

Protected and healthy

Coordinated and well managed

Benefits to Council and the Community

- Prioritised
- Transparent and accountable
- Guide decision making and planning
- Work together
- Modern asset management
- Proactive rather than reactive
- Avoid future issues
- Accommodate growth
- Manage a complex and growing asset base
- Prepared for a changing climate
- Network is sustainable and fit for purpose
- Improved customer experience
- Healthy waterways and beaches
- Safe, healthy and resilient community

Recommendations

That Council:

- a) receive and note the report titled “Stormwater Management Strategy” and
- b) adopt the “Stormwater Management Strategy” as provided in:
 - Appendix A – Stormwater Management Strategy – Summary
 - Appendix B – Stormwater Management Strategy – Part A
 - Appendix C – Stormwater Management Strategy – Part B

Thank you.



Sunshine Coast[™]
COUNCIL

Our region.
Healthy. Smart. Creative.

See council's website for further details
www.sunshinecoast.qld.gov.au