



Map 76 - A



Map 76 - B



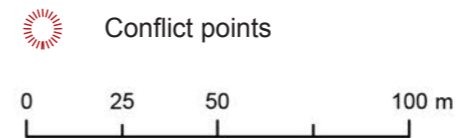
**Key Plan**

**Coastal Pathway Category**

- Completed
- 2.4 - 2.9m, Low Priority
- Less than 2.4m, High Priority
- Less than 2.4m, Medium Priority
- Less than 2.4m, Low Priority
- Temporary Link

**Missing Links Priority**

- High
- Low
- Long Term Planning Option
- Property Boundaries
- Geotagged Photos





Map 77 - A



Map 77 - B



Map 77 - C

Indicative pathway alignment - final location will be subject to detailed site investigation. Pathway corridor will aim to avoid impacts on native vegetation by aligning with cleared and weed infested areas. Bush regeneration will be undertaken as part of the work.



### Key Plan

#### Coastal Pathway Category

- Completed
- 2.4 - 2.9m, Low Priority
- Less than 2.4m, High Priority
- Less than 2.4m, Medium Priority
- Less than 2.4m, Low Priority

#### Missing Links Priority

- High
- Low
- Long Term Planning Option
- Property Boundaries
- Geotagged Photos



Map 78 - A



Map 78 - B



Map 78 - C



**Key Plan**

**Coastal Pathway Category**

- Completed
- 2.4 - 2.9m, Low Priority
- Less than 2.4m, High Priority
- Less than 2.4m, Medium Priority
- Less than 2.4m, Low Priority
- Temporary Link

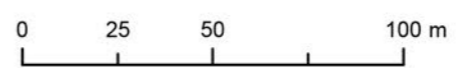
**Missing Links Priority**

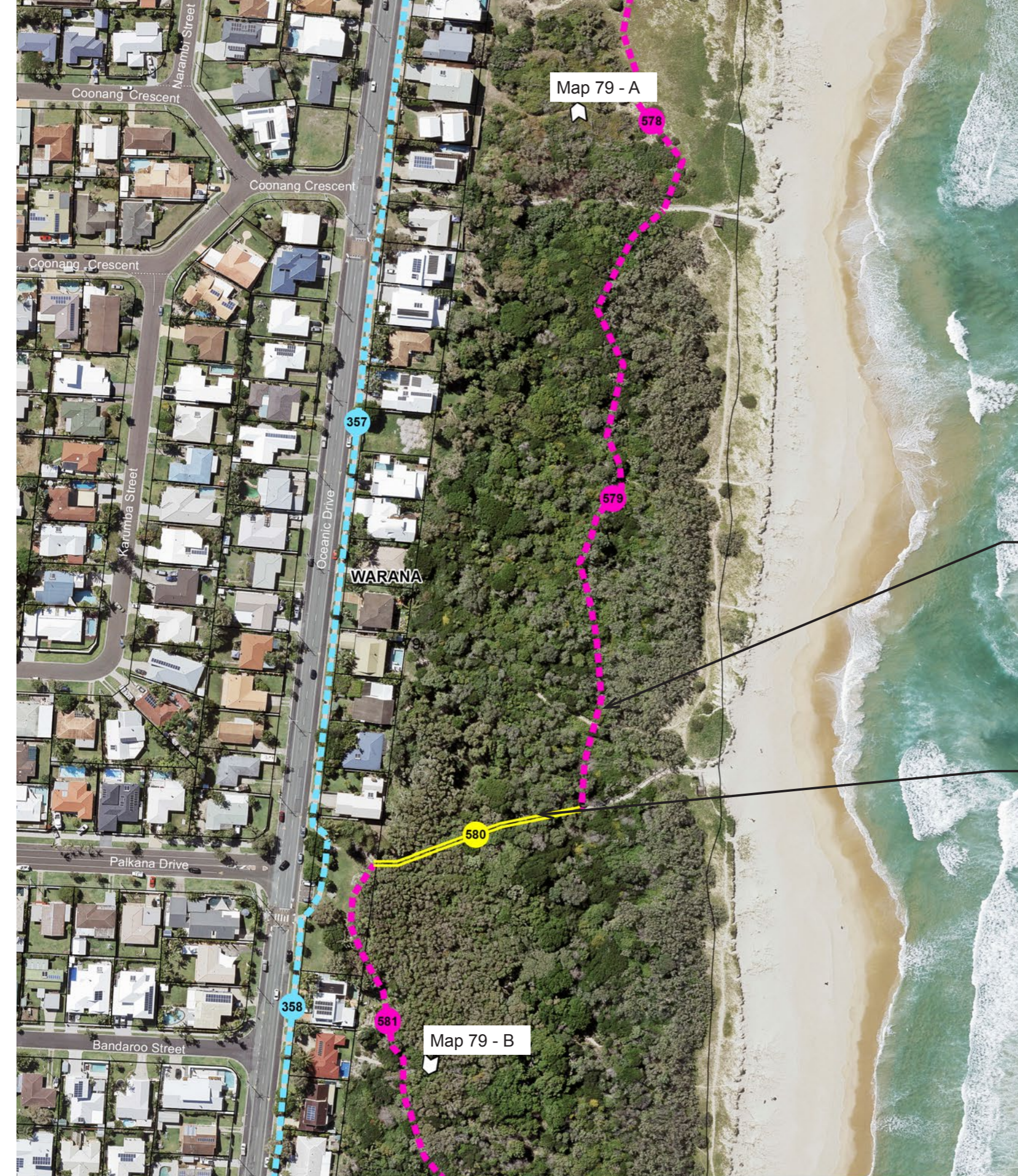
- High
- Low
- Long Term Planning Option
- Property Boundaries
- Geotagged Photos

Indicative pathway alignment - final location will be subject to detailed site investigation. Pathway corridor will aim to avoid impacts on native vegetation by aligning with cleared and weed infested areas. Bush regeneration will be undertaken as part of the work.

**THIS MAP SUBJECT TO CHANGE AS A RESULT OF COUNCIL RESOLUTION (OM17/241)**

In relation to Map 78, 79 & 82, and in consultation with the Division 3 Councillor, create a second indicative option located closer toward the ocean which seeks to better align with the local community's wishes and the vision of being a world-class scenic coastal pathway.





Map 79 - A



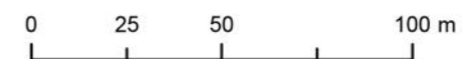
Map 79 - B

Indicative pathway alignment - final location will be subject to detailed site investigation. Pathway corridor will aim to avoid impacts on native vegetation by aligning with cleared and weed infested areas. Bush regeneration will be undertaken as part of the work.

Existing beach access path

**THIS MAP SUBJECT TO CHANGE AS A RESULT OF COUNCIL RESOLUTION (OM17/241)**

In relation to Map 78, 79 & 82, and in consultation with the Division 3 Councillor, create a second indicative option located closer toward the ocean which seeks to better align with the local community's wishes and the vision of being a world-class scenic coastal pathway.



### Key Plan

#### Coastal Pathway Category

- Completed
- 2.4 - 2.9m, Low Priority
- Less than 2.4m, High Priority
- Less than 2.4m, Medium Priority
- Less than 2.4m, Low Priority

#### Temporary Link

#### Missing Links Priority

- High
- Low
- Long Term Planning Option
- Property Boundaries
- Geotagged Photos



Map 80 - A

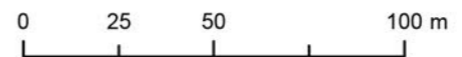


Map 80 - B



Map 80 - C

Indicative pathway alignment - final location will be subject to detailed site investigation. Pathway corridor will aim to avoid impacts on native vegetation by aligning with cleared and weed infested areas. Bush regeneration will be undertaken as part of the work.



### Key Plan

**Coastal Pathway Category**

- Completed
- 2.4 - 2.9m, Low Priority
- Less than 2.4m, High Priority
- Less than 2.4m, Medium Priority
- Less than 2.4m, Low Priority
- - - Temporary Link

**Missing Links Priority**

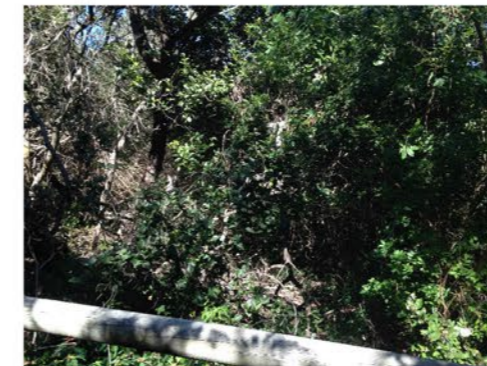
- - - High
- - - Low
- - - Long Term Planning Option
- Property Boundaries
- Geotagged Photos



Map 81 - A



Map 81 - B







Map 81 - C



### Key Plan

#### Coastal Pathway Category

-  Completed
-  2.4 - 2.9m, Low Priority
-  Less than 2.4m, High Priority
-  Less than 2.4m, Medium Priority
-  Less than 2.4m, Low Priority

#### Temporary Link

-  Temporary Link

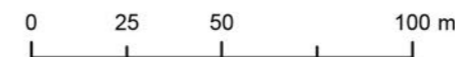
#### Missing Links Priority

-  High
-  Low
-  Long Term Planning Option

-  Property Boundaries

-  Geotagged Photos

Indicative pathway alignment - final location will be subject to detailed site investigation. Pathway corridor will aim to avoid impacts on native vegetation by aligning with cleared and weed infested areas. Bush regeneration will be undertaken as part of the work.





Map 82 - A



Map 82 - B

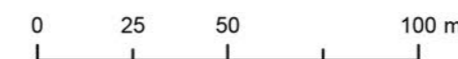


Map 82 - C

Indicative pathway alignment - final location will be subject to detailed site investigation. Pathway corridor will aim to avoid impacts on native vegetation by aligning with cleared and weed infested areas. Bush regeneration will be undertaken as part of the work.

**THIS MAP SUBJECT TO CHANGE AS A RESULT OF COUNCIL RESOLUTION (OM17/241)**

In relation to Map 78, 79 & 82, and in consultation with the Division 3 Councillor, create a second indicative option located closer toward the ocean which seeks to better align with the local community's wishes and the vision of being a world-class scenic coastal pathway.



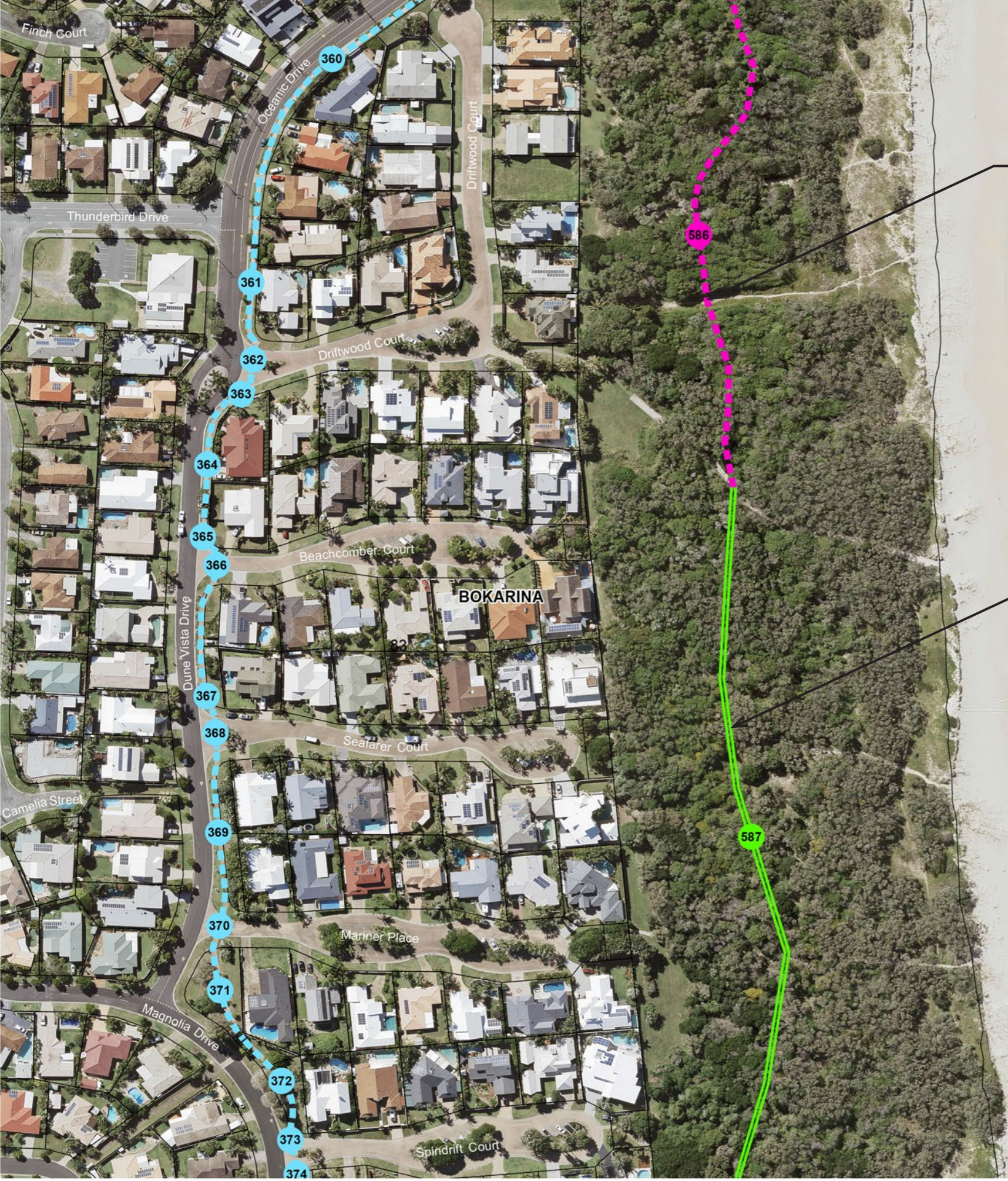
**Key Plan**

**Coastal Pathway Category**

- Completed
- 2.4 - 2.9m, Low Priority
- Less than 2.4m, High Priority
- Less than 2.4m, Medium Priority
- Less than 2.4m, Low Priority

**Missing Links Priority**

- High
- Low
- Long Term Planning Option
- Property Boundaries
- Geotagged Photos



Indicative pathway alignment - final location will be subject to detailed site investigation. Pathway corridor will aim to avoid impacts on native vegetation by aligning with cleared and weed infested areas. Bush regeneration will be undertaken as part of the work.

Coastal pathway - recently completed section.



**Key Plan**

**Coastal Pathway Category**

- Completed
- 2.4 - 2.9m, Low Priority
- Less than 2.4m, High Priority
- Less than 2.4m, Medium Priority
- Less than 2.4m, Low Priority
- - - Temporary Link

**Missing Links Priority**

- - - High
- - - Low
- • • Long Term Planning Option
- Property Boundaries
- Geotagged Photos





Indicative pathway alignment -  
subject to approved master plan



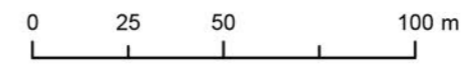
**Key Plan**

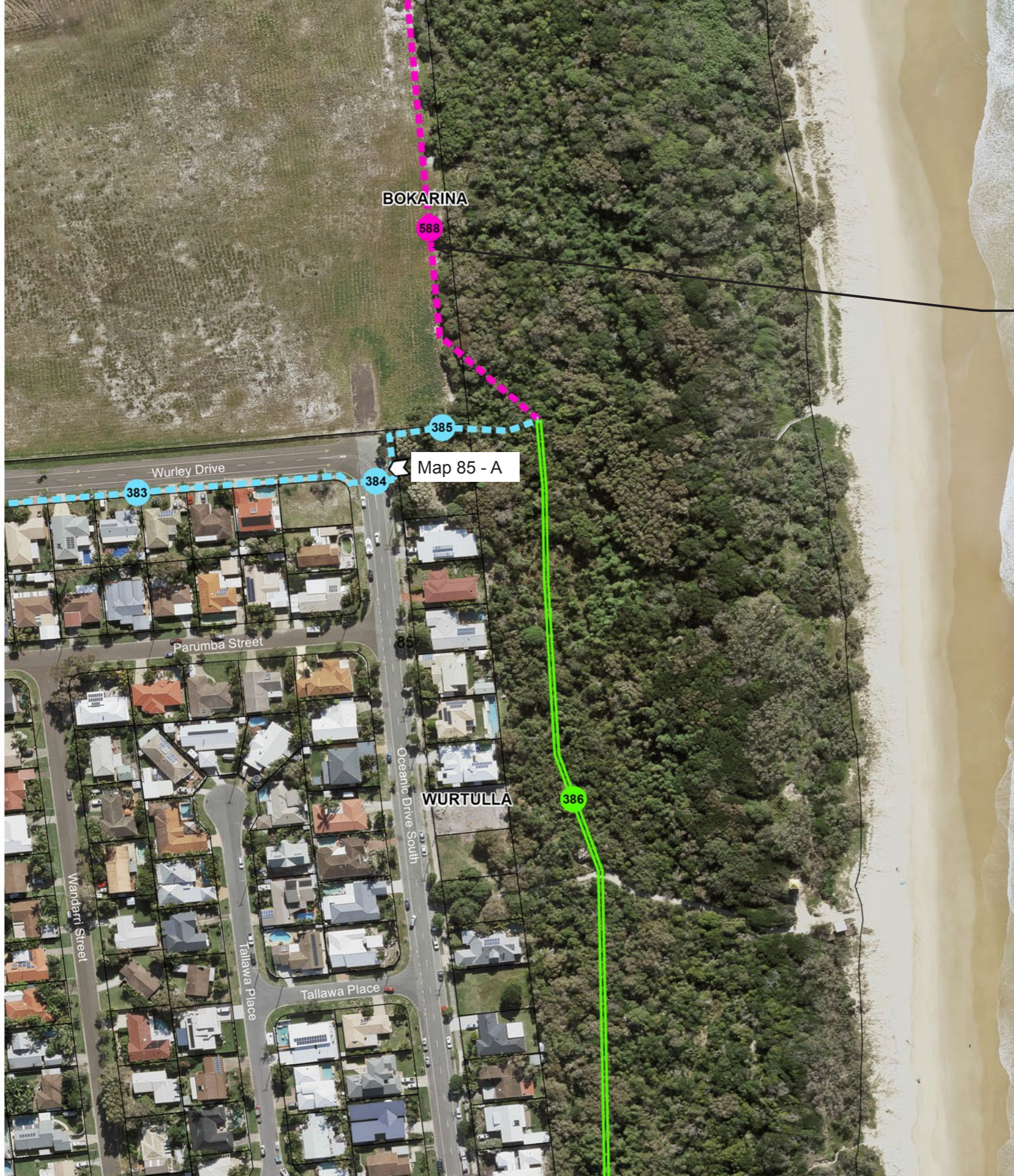
**Coastal Pathway Category**

- Completed
- 2.4 - 2.9m, Low Priority
- Less than 2.4m, High Priority
- Less than 2.4m, Medium Priority
- Less than 2.4m, Low Priority
- Temporary Link

**Missing Links Priority**

- High
- Low
- Long Term Planning Option
- Property Boundaries
- Geotagged Photos





Map 85 - A

Indicative pathway alignment - subject to approved master plan



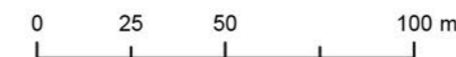
### Key Plan

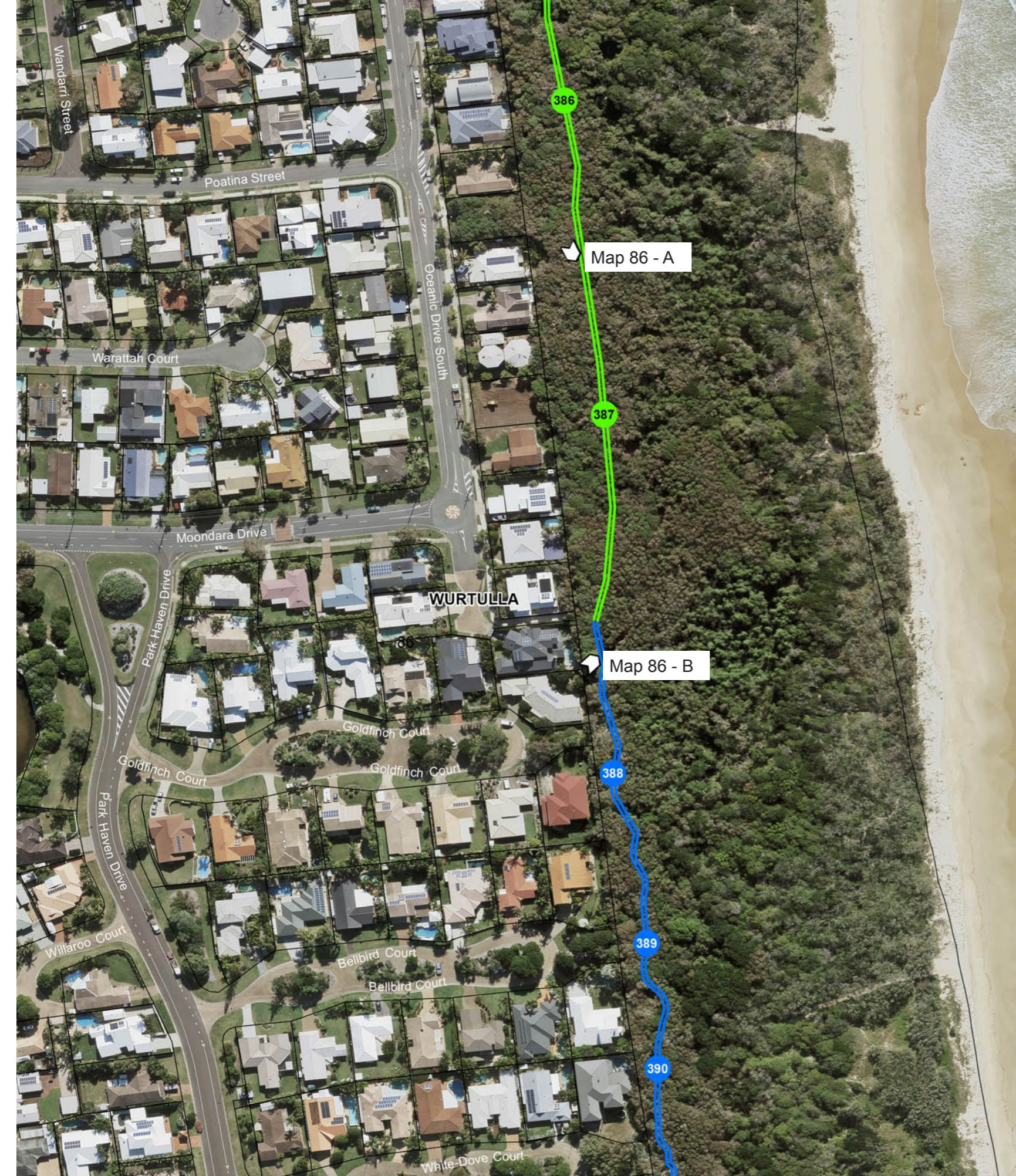
#### Coastal Pathway Category

- Completed
- 2.4 - 2.9m, Low Priority
- Less than 2.4m, High Priority
- Less than 2.4m, Medium Priority
- Less than 2.4m, Low Priority

#### Missing Links Priority

- High
- Low
- Long Term Planning Option
- Property Boundaries
- Geotagged Photos





Map 86 - A



Map 86 - B



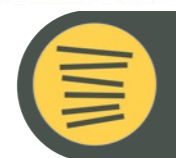
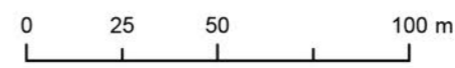
**Key Plan**

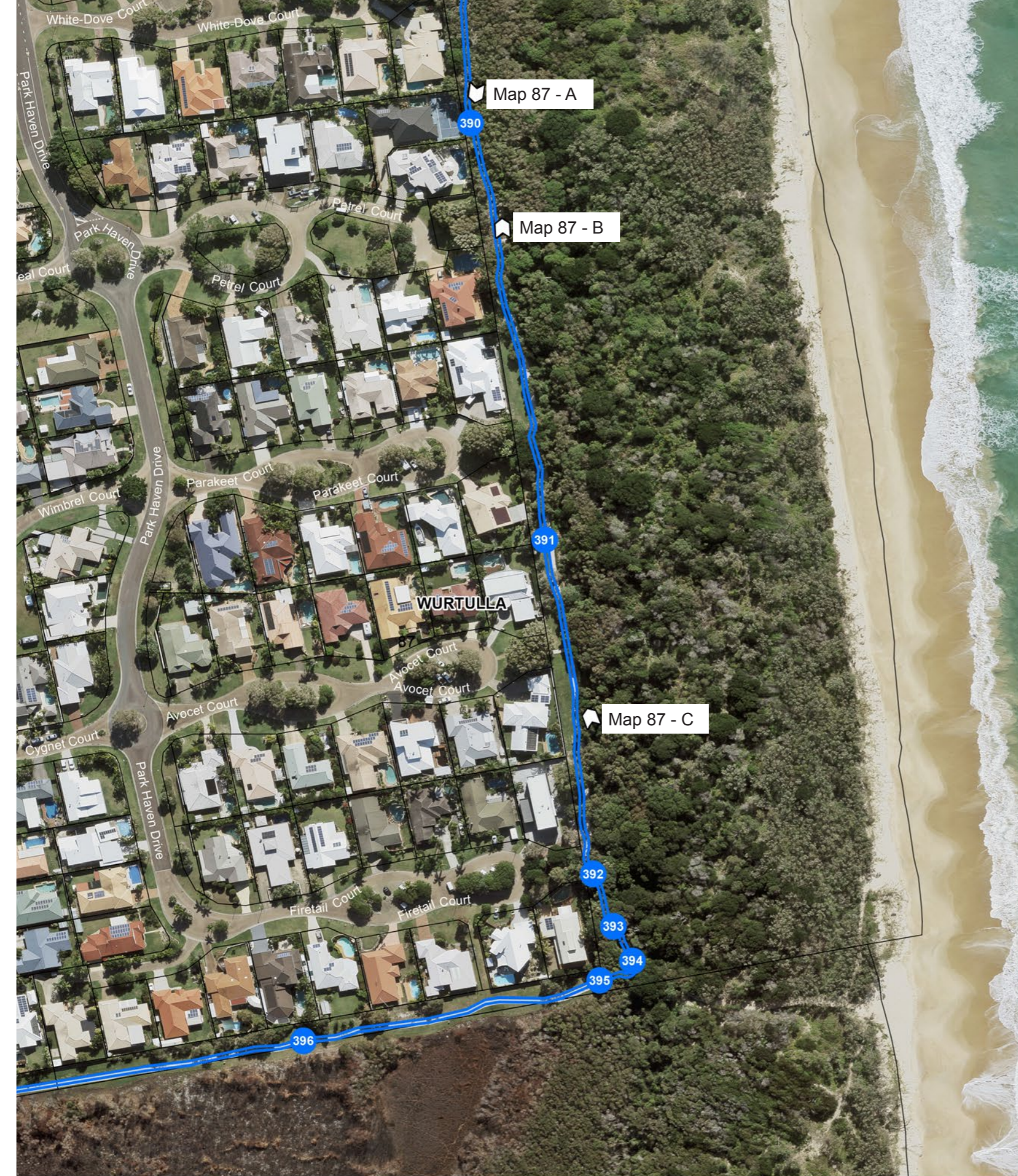
**Coastal Pathway Category**

- Completed
- 2.4 - 2.9m, Low Priority
- Less than 2.4m, High Priority
- Less than 2.4m, Medium Priority
- Less than 2.4m, Low Priority
- Temporary Link

**Missing Links Priority**

- High
- Low
- Long Term Planning Option
- Property Boundaries
- Geotagged Photos





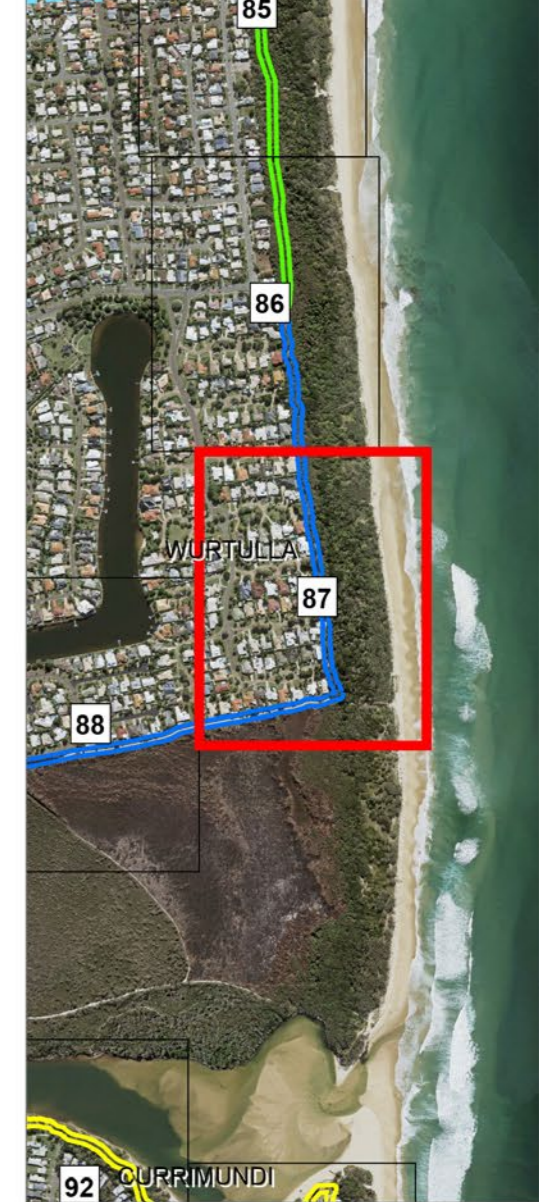
Map 87 - A



Map 87 - B






Map 87 - C



### Key Plan

#### Coastal Pathway Category

-  Completed
-  2.4 - 2.9m, Low Priority
-  Less than 2.4m, High Priority
-  Less than 2.4m, Medium Priority
-  Less than 2.4m, Low Priority

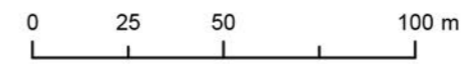
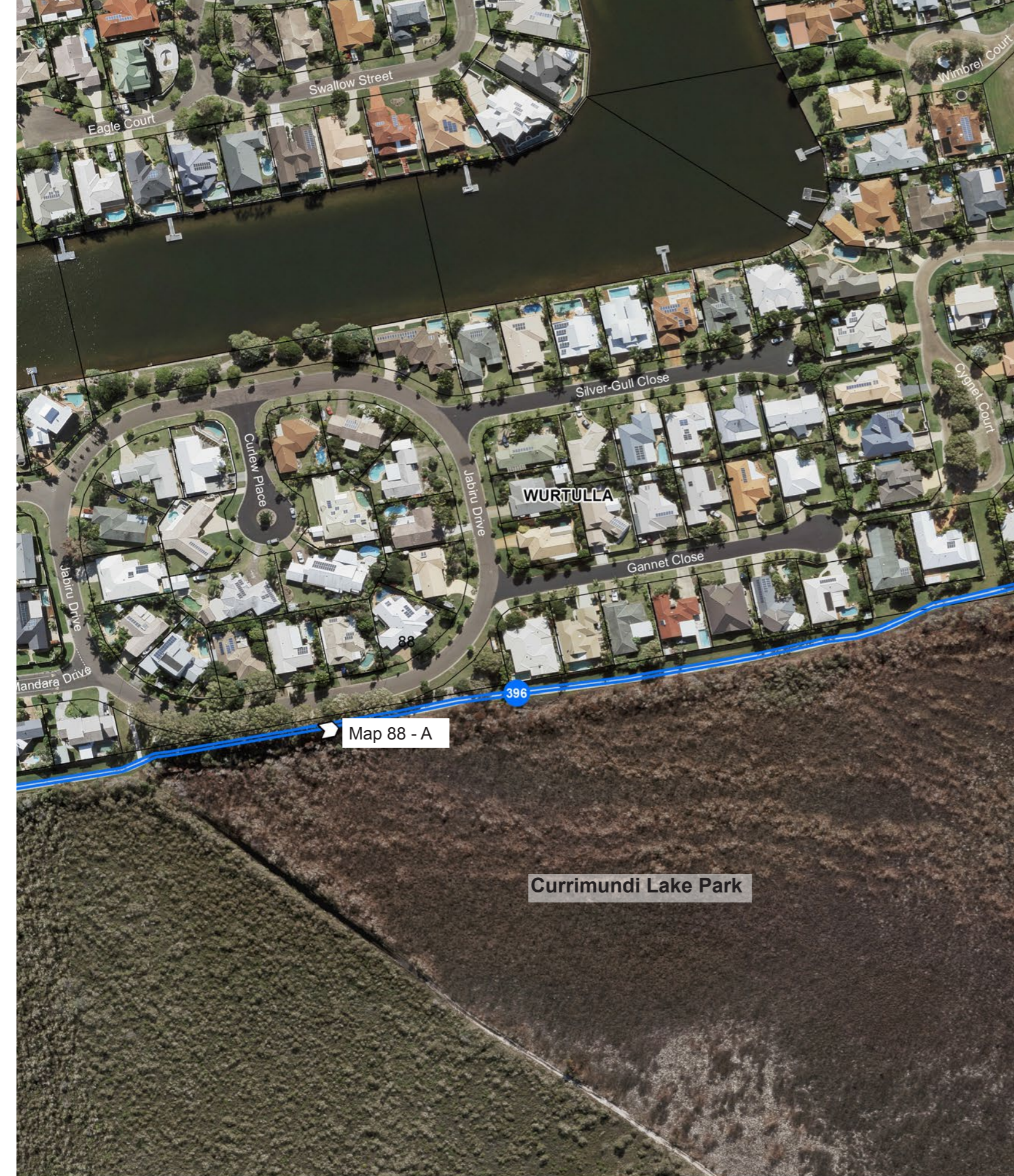
#### Missing Links Priority

-  High
-  Low
-  Long Term Planning Option
-  Property Boundaries
-  Geotagged Photos





Map 88 - A



**Key Plan**

**Coastal Pathway Category**

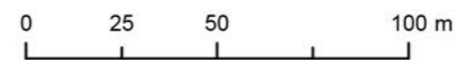
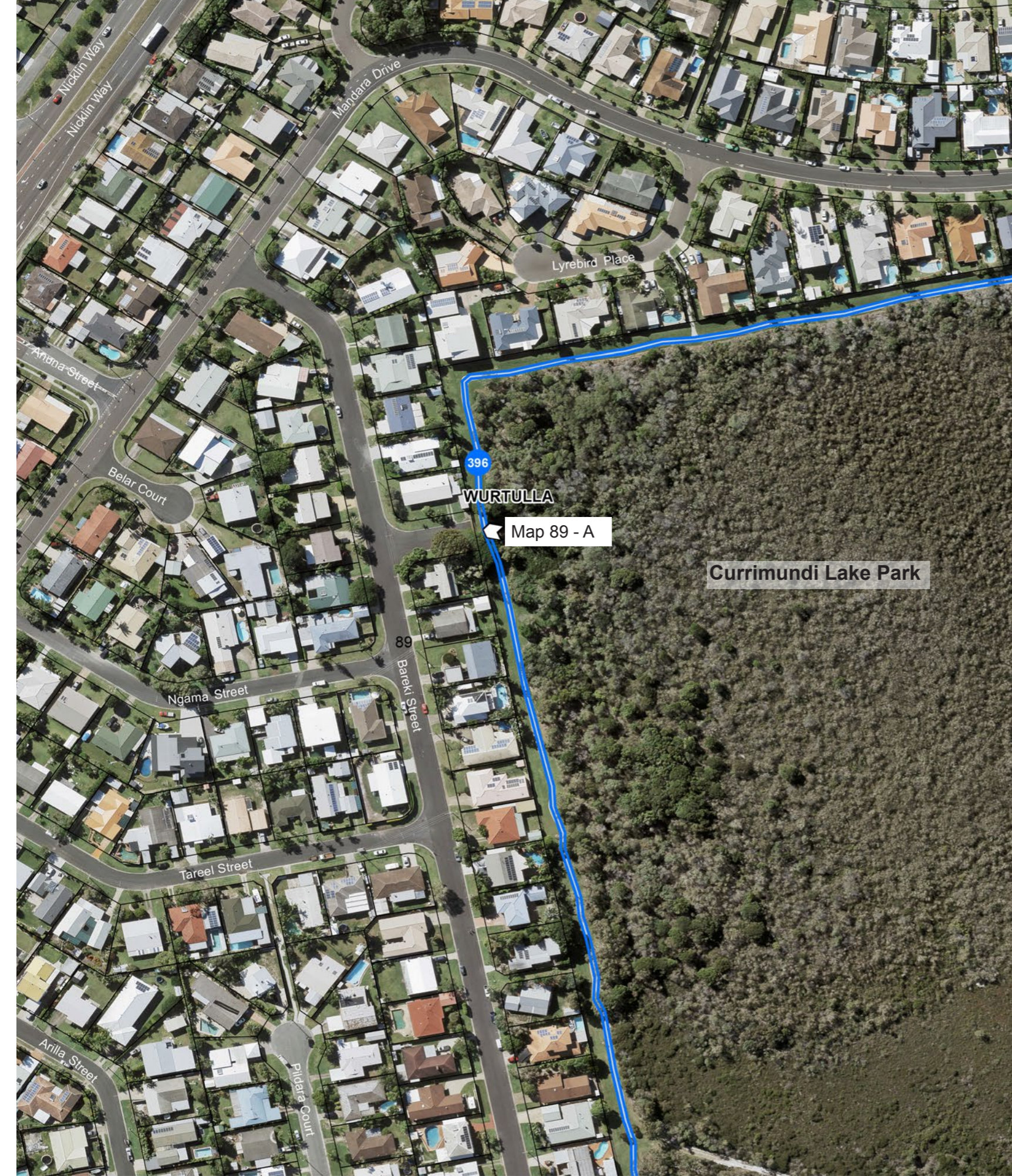
-  Completed
-  2.4 - 2.9m, Low Priority
-  Less than 2.4m, High Priority
-  Less than 2.4m, Medium Priority
-  Less than 2.4m, Low Priority
-  Temporary Link

**Missing Links Priority**

-  High
-  Low
-  Long Term Planning Option
-  Property Boundaries
-  Geotagged Photos



Map 89 - A



**Key Plan**

**Coastal Pathway Category**

- Completed
- 2.4 - 2.9m, Low Priority
- Less than 2.4m, High Priority
- Less than 2.4m, Medium Priority
- Less than 2.4m, Low Priority
- Temporary Link

**Missing Links Priority**

- High
- Low
- Long Term Planning Option
- Property Boundaries
- Geotagged Photos

